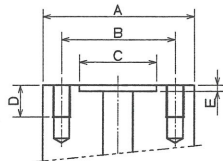


Connection list

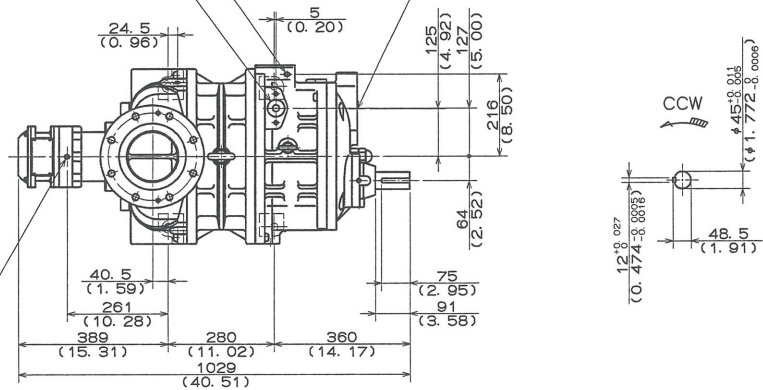
	Size	Qty	A	φB	φC	D	E	Bolt Size	No. of Bolt
Suction gas inlet	MYK125A	1	φ270	230	174	27	5	M20	8
Discharge gas outlet	MYK100CD	1	φ190	190	111	33	4.5	M22	4
Intermediate gas inlet(Electromizer)	MYK25A	1	φ90	83	52	18	4.5	M12	4
Liquid refrigerant inlet(No. 1 Aquamizer)	MYK20A	1	φ108	76	45	18	4.5	M12	2
Lubrication oil inlet	Rc1/2	1							
Inlet of oil injection	Rc3/8	1							
Liquid refrigerant inlet(No. 2 Aquamizer)	Rc3/8	1							
Oil connection for hydraulic cylinder(Loading)	Rc3/8	1							
Oil connection for hydraulic cylinder(Unloading)	Rc1/4	1							
Lubrication oil inlet for F rotor side bearing	Rc1/4	1							
Oil drain(Suction cover)	Rc3/8	1							
Oil drain(bearing head)	Rc3/8	1							
Cable(for electric appliance)	PF3/4	2							

Dimension of MYK Flange



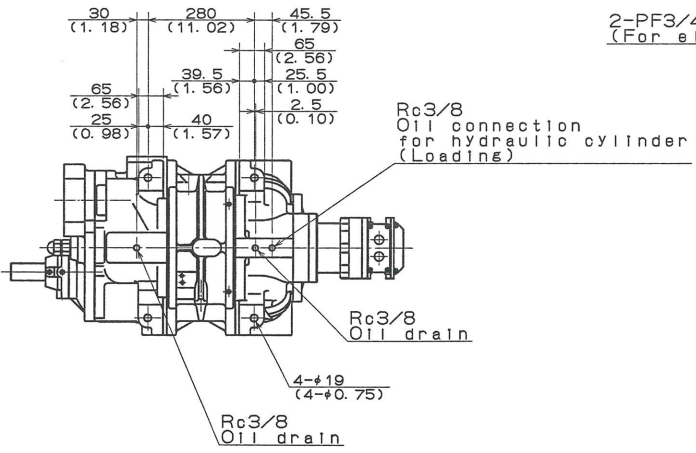
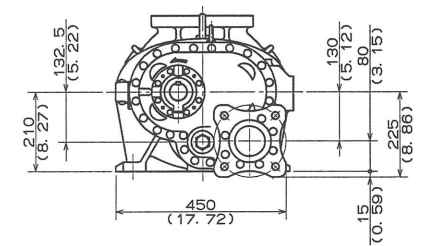
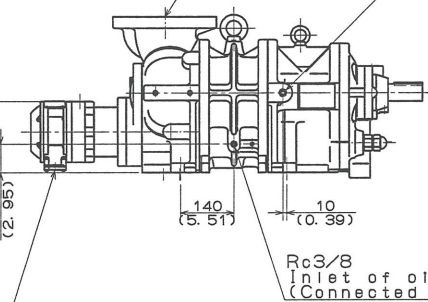
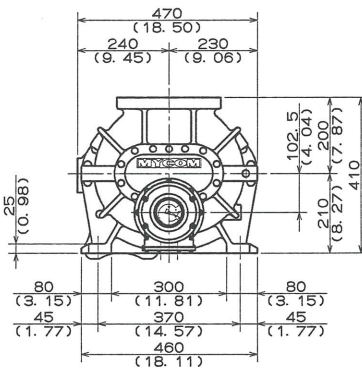
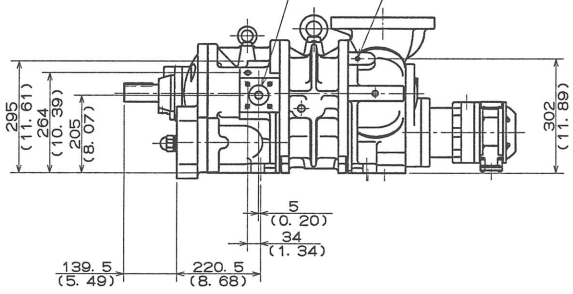
Rc3/8  
Liquid refrigerant inlet (No. 2 Aquamizer)  
MYK20A  
Liquid refrigerant inlet (No. 1 Aquamizer)

MYK100CD  
Discharge gas outlet



MYK25A  
Intermediate gas inlet (Electromizer)  
Rc1/4  
Oil connection for hydraulic cylinder (Unloading)  
Rc1/4  
Lubrication oil inlet (For F rotor side bearing)

MYK125A  
Suction gas inlet  
Rc1/2  
Lubrication oil inlet



2-PF3/4 Cable (For electric appliance)

出図  
管理No.  
24.4.20  
圧縮機製造  
前川製作所  
守谷工場

CASING	: FC300
O-RING	: FKM
ROTOR	: FCD600
SHAFT SEAL	: DOUBLE TYPE (BBS1x2)
JOINT	: Rc

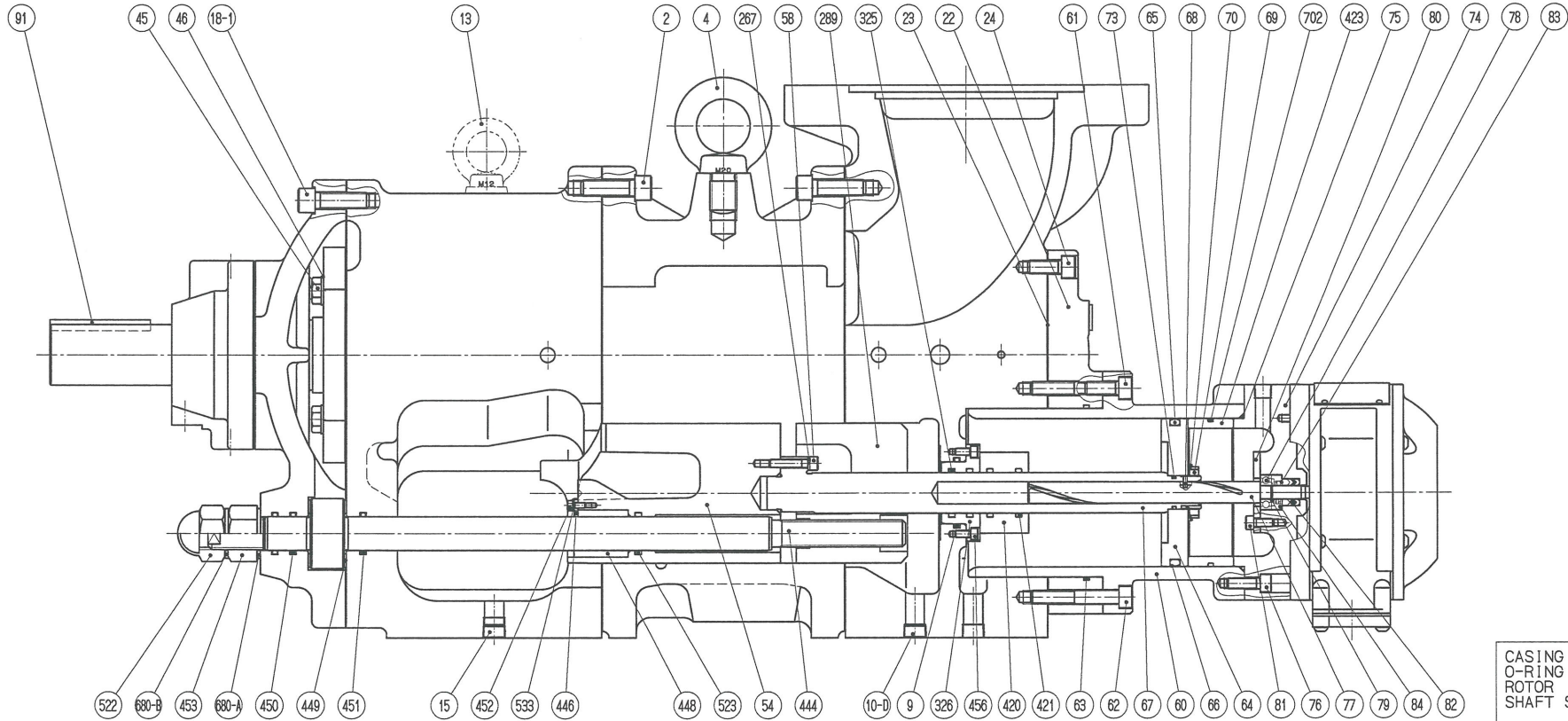
ME24-11MPE0240063/P160VSD-M  
S/N 1656466  
1656467

All dimensions are millimetre  
All figures in brackets are in inches

INTRINSIC SAFETY TYPE UNLOADER INDICATOR

STAMP AREA  
DO NOT DRAW IN THIS AREA.

設計 DESIGNED	検査 CHECKED	承認 APPROVED
SS213019-00	SCALE 1:10	DATE 8. APR. 2024
MYCOM	株式会社 前川製作所 圧縮機製造	MAYEKAWA MFG. CO., LTD. MORIYA PLANT



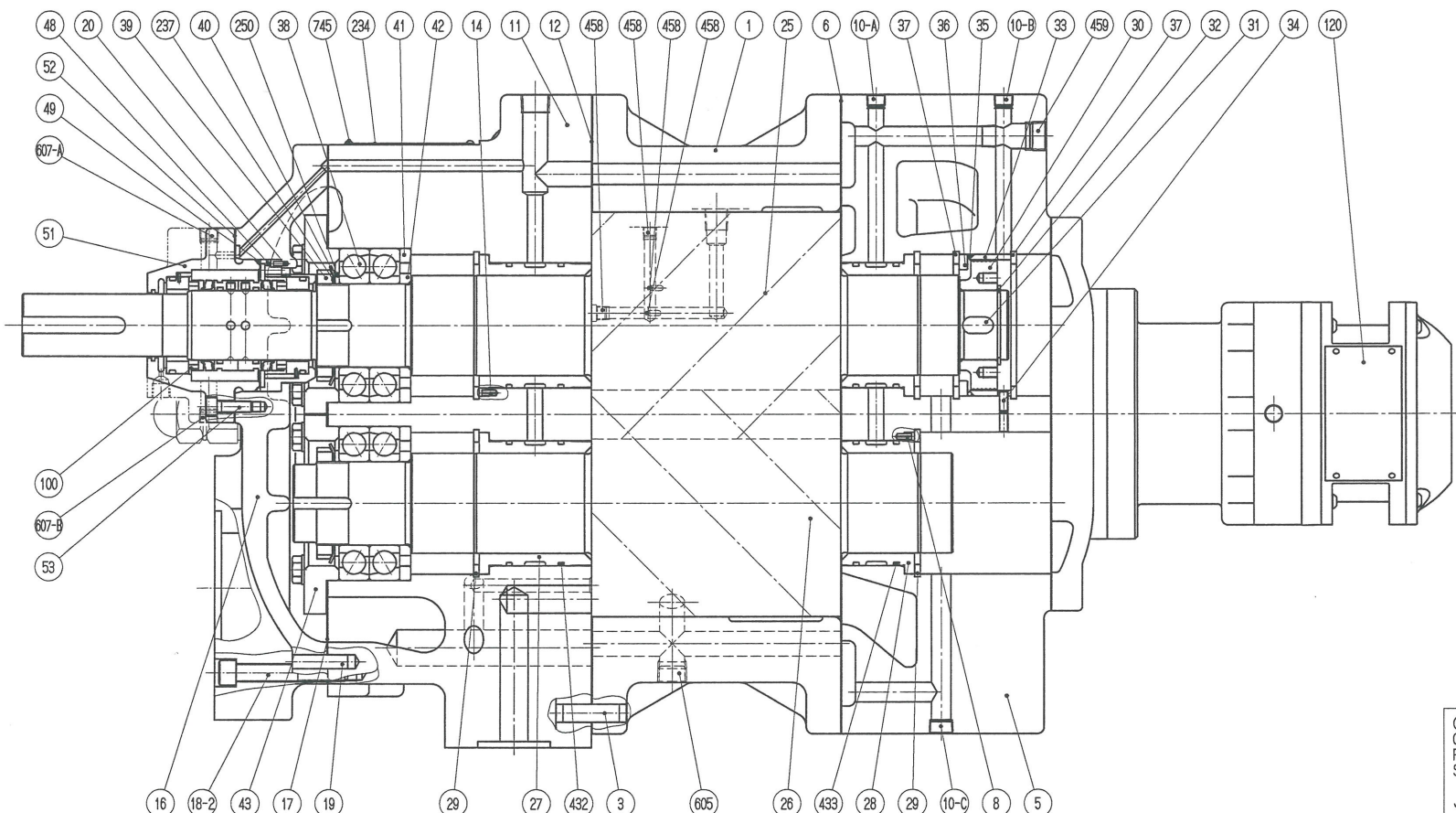
CASING : FC300  
 O-RING : FKM  
 ROTOR : FCD600  
 SHAFT SEAL: DOUBLE TYPE (BBS1x2)  
 JOINT : Ro

★ SPECIAL PARTS

ME24-11MPEO240063/P160VSD-M  
S/N 1656466  
1656467

INTRINSIC SAFETY TYPE UNLOADER INDICATOR

NO.	部 品 名	材 質	個 数	備 考	NO.	部 品 名	材 質	個 数	備 考	NO.	部 品 名	材 質	個 数	備 考
267	SPECIAL SPRING WASHER	SWRH57-77	5	M6 TYPE	62	HEXAGON SOCKET HEAD CAP SCREW	SCM435	6	M10x65	61	HEXAGON SOCKET HEAD CAP SCREW	SCM435	2	M10x25
91	SHAFT KEY	S45C	1		60	UNLOADER CYLINDER	FC300	1	160V**	58	HEXAGON SOCKET HEAD CAP SCREW	SCM435	5	M6x30
84	SPRING RETAINER	S25C	1		54	UNLOADER SLIDE VALVE	FC300	1	160VS*	46	CONICAL SPRING WASHER	S50CM-S70CM	8	M10 TYPE
83	SPRING	SWP-B	1		45	HEXAGON HEAD BOLT	SCM435	8	M10x30	45	HEXAGON HEAD BOLT	SCM435	8	M10x30
82	TEFLON V-RING	PTFE/FKM	1set	20x10x12	24	HEXAGON SOCKET HEAD CAP SCREW	SCM435	11	M10x25	23	GASKET, BALANCE PISTON COVER	NON-ASBESTOS	1	
81	HEXAGON SOCKET HEAD CAP SCREW	SCM435	3	M6x15	22	BALANCE PISTON COVER	FC300	1		22	BALANCE PISTON COVER	FC300	1	
80	BEARING GLAND	SS400	1		18-1	HEXAGON SOCKET HEAD CAP SCREW	SCM435	19	M12x40	18-1	HEXAGON SOCKET HEAD CAP SCREW	SCM435	19	M12x40
79	STOP RING	SUP3	1	S10	15	PLUG	S45C	1	R3/8	13	EYEBOLT	SS400	1	M12
78	BALL BEARING	~	1	#6000	10-D	PLUG	S45C	1	R3/8	10-D	PLUG	S45C	1	R3/8
77	UNLOADER INDICATOR CAM	S45C	1	160VS*	9	O-RING	FKM	1	JIS B2401 P46	9	O-RING	FKM	1	JIS B2401 P46
76	HEXAGON SOCKET HEAD CAP SCREW	SCM435	8	M8x25	4	EYEBOLT	SS400	1	M20	4	EYEBOLT	SS400	1	M20
75	O-RING	FKM	1	JIS B2401 G110	2	HEXAGON SOCKET HEAD CAP SCREW	SCM435	52	M12x40	2	HEXAGON SOCKET HEAD CAP SCREW	SCM435	52	M12x40
74	THRUST WASHER	PTFE	2		13	EYEBOLT	SS400	1	M12	13	EYEBOLT	SS400	1	M12
73	O-RING	FKM	1	JIS B2401 P21	10-D	PLUG	S45C	1	R3/8	10-D	PLUG	S45C	1	R3/8
70	LOCKWASHER	SPCC	1	AW05	9	O-RING	FKM	1	JIS B2401 P46	9	O-RING	FKM	1	JIS B2401 P46
69	LOCKNUT	SS400	1	AN05	4	EYEBOLT	SS400	1	M20	4	EYEBOLT	SS400	1	M20
68	GUIDE PIN	SAE8630	1	φ3x8	2	HEXAGON SOCKET HEAD CAP SCREW	SCM435	52	M12x40	2	HEXAGON SOCKET HEAD CAP SCREW	SCM435	52	M12x40
67	PUSH ROD, UNLOADER SLIDE VALVE	S45C	1	160V**	13	EYEBOLT	SS400	1	M12	13	EYEBOLT	SS400	1	M12
66	TEFLON CAP SEAL	PTFE	1		10-D	PLUG	S45C	1	R3/8	10-D	PLUG	S45C	1	R3/8
65	O-RING	FKM	1	JIS B2401 P100	9	O-RING	FKM	1	JIS B2401 P46	9	O-RING	FKM	1	JIS B2401 P46
64	UNLOADER PISTON	FC300	1		4	EYEBOLT	SS400	1	M20	4	EYEBOLT	SS400	1	M20
63	O-RING	FKM	1	JIS B2401 G125	2	HEXAGON SOCKET HEAD CAP SCREW	SCM435	52	M12x40	2	HEXAGON SOCKET HEAD CAP SCREW	SCM435	52	M12x40
62	HEXAGON SOCKET HEAD CAP SCREW	SCM435	6	M10x65	13	EYEBOLT	SS400	1	M12	13	EYEBOLT	SS400	1	M12
61	HEXAGON SOCKET HEAD CAP SCREW	SCM435	2	M10x25	10-D	PLUG	S45C	1	R3/8	10-D	PLUG	S45C	1	R3/8
58	HEXAGON SOCKET HEAD CAP SCREW	SCM435	5	M6x30	9	O-RING	FKM	1	JIS B2401 P46	9	O-RING	FKM	1	JIS B2401 P46
54	UNLOADER SLIDE VALVE	FC300	1	160VS*	4	EYEBOLT	SS400	1	M20	4	EYEBOLT	SS400	1	M20
52	DOMED CAP NUT	SS400	1	M24	2	HEXAGON SOCKET HEAD CAP SCREW	SCM435	52	M12x40	2	HEXAGON SOCKET HEAD CAP SCREW	SCM435	52	M12x40
523	O-RING	FKM	1	JIS B2401 P25	13	EYEBOLT	SS400	1	M12	13	EYEBOLT	SS400	1	M12
54	UNLOADER INDICATOR CAM	S45C	1	160VS*	10-D	PLUG	S45C	1	R3/8	10-D	PLUG	S45C	1	R3/8
448	TEFLON BUSHING	PTFE	1		9	O-RING	FKM	1	JIS B2401 P46	9	O-RING	FKM	1	JIS B2401 P46
446	VI SQUARE WASHER	SS400	1		4	EYEBOLT	SS400	1	M20	4	EYEBOLT	SS400	1	M20
444	VI ADJUSTING ROD	SCM435	1	160VS*	2	HEXAGON SOCKET HEAD CAP SCREW	SCM435	52	M12x40	2	HEXAGON SOCKET HEAD CAP SCREW	SCM435	52	M12x40
452	HEXAGON SOCKET HEAD CAP SCREW	SCM435	1	M4x10	13	EYEBOLT	SS400	1	M12	13	EYEBOLT	SS400	1	M12
453	HEXAGON NUT	S45C	1	M24	10-D	PLUG	S45C	1	R3/8	10-D	PLUG	S45C	1	R3/8
453	HEXAGON SOCKET HEAD CAP SCREW	SCM435	2	M5x12	9	O-RING	FKM	1	JIS B2401 P46	9	O-RING	FKM	1	JIS B2401 P46
453	HEXAGON NUT	S45C	1	M24	4	EYEBOLT	SS400	1	M20	4	EYEBOLT	SS400	1	M20
453	HEXAGON SOCKET HEAD CAP SCREW	SCM435	1	M4x10	2	HEXAGON SOCKET HEAD CAP SCREW	SCM435	52	M12x40	2	HEXAGON SOCKET HEAD CAP SCREW	SCM435	52	M12x40
453	HEXAGON NUT	S45C	1	M24	10-D	PLUG	S45C	1	R3/8	10-D	PLUG	S45C	1	R3/8
453	HEXAGON SOCKET HEAD CAP SCREW	SCM435	2	M5x12	9	O-RING	FKM	1	JIS B2401 P46	9	O-RING	FKM	1	JIS B2401 P46
453	HEXAGON NUT	S45C	1	M24	4	EYEBOLT	SS400	1	M20	4	EYEBOLT	SS400	1	M20
453	HEXAGON SOCKET HEAD CAP SCREW	SCM435	1	M4x10	2	HEXAGON SOCKET HEAD CAP SCREW	SCM435	52	M12x40	2	HEXAGON SOCKET HEAD CAP SCREW	SCM435	52	M12x40
453	HEXAGON NUT	S45C	1	M24	10-D	PLUG	S45C	1	R3/8	10-D	PLUG	S45C	1	R3/8
453	HEXAGON SOCKET HEAD CAP SCREW	SCM435	2	M5x12	9	O-RING	FKM	1	JIS B2401 P46	9	O-RING	FKM	1	JIS B2401 P46
453	HEXAGON NUT	S45C	1	M24	4	EYEBOLT	SS400	1	M20	4	EYEBOLT	SS400	1	M20
453	HEXAGON SOCKET HEAD CAP SCREW	SCM435	1	M4x10	2	HEXAGON SOCKET HEAD CAP SCREW	SCM435	52	M12x40	2	HEXAGON SOCKET HEAD CAP SCREW	SCM435	52	M12x40
453	HEXAGON NUT	S45C	1	M24	10-D	PLUG	S45C	1	R3/8	10-D	PLUG	S45C	1	R3/8
453	HEXAGON SOCKET HEAD CAP SCREW	SCM435	2	M5x12	9	O-RING	FKM	1	JIS B2401 P46	9	O-RING	FKM	1	JIS B2401 P46
453	HEXAGON NUT	S45C	1	M24	4	EYEBOLT	SS400	1	M20	4	EYEBOLT	SS400	1	M20
453	HEXAGON SOCKET HEAD CAP SCREW	SCM435	1	M4x10	2	HEXAGON SOCKET HEAD CAP SCREW	SCM435	52	M12x40	2	HEXAGON SOCKET HEAD CAP SCREW	SCM435	52	M12x40
453	HEXAGON NUT	S45C	1	M24	10-D	PLUG	S45C	1	R3/8	10-D	PLUG	S45C	1	R3/8
453	HEXAGON SOCKET HEAD CAP SCREW	SCM435	2	M5x12	9	O-RING	FKM	1	JIS B2401 P46	9	O-RING	FKM	1	JIS B2401 P46
453	HEXAGON NUT	S45C	1	M24	4	EYEBOLT	SS400	1	M20	4	EYEBOLT	SS400	1	M20
453	HEXAGON SOCKET HEAD CAP SCREW	SCM435	1	M4x10	2	HEXAGON SOCKET HEAD CAP SCREW	SCM435	52	M12x40	2	HEXAGON SOCKET HEAD CAP SCREW	SCM435	52	M12x40
453	HEXAGON NUT	S45C	1	M24	10-D	PLUG	S45C	1	R3/8	10-D	PLUG	S45C	1	R3/8
453	HEXAGON SOCKET HEAD CAP SCREW	SCM435	2	M5x12	9	O-RING	FKM	1	JIS B2401 P46	9	O-RING	FKM	1	JIS B2401 P46
453	HEXAGON NUT	S45C	1	M24	4	EYEBOLT	SS400	1	M20	4	EYEBOLT	SS400	1	M20
453	HEXAGON SOCKET HEAD CAP SCREW	SCM435	1	M4x10	2	HEXAGON SOCKET HEAD CAP SCREW	SCM435	52	M12x40	2	HEXAGON SOCKET HEAD CAP SCREW	SCM435	52	M12x40
453	HEXAGON NUT	S45C	1	M24	10-D	PLUG	S45C	1	R3/8	10-D	PLUG	S45C	1	R3/8
453	HEXAGON SOCKET HEAD CAP SCREW	SCM435	2	M5x12	9	O-RING	FKM	1	JIS B2401 P46	9	O-RING	FKM	1	JIS B2401 P46
453	HEXAGON NUT	S45C	1	M24	4	EYEBOLT	SS400	1	M20	4	EYEBOLT	SS400	1	M20
453	HEXAGON SOCKET HEAD CAP SCREW	SCM435	1	M4x10	2	HEXAGON SOCKET HEAD CAP SCREW	SCM435	52	M12x40	2	HEXAGON SOCKET HEAD CAP SCREW	SCM435	52	M12x40
453	HEXAGON NUT	S45C	1	M24	10-D	PLUG	S45C	1	R3/8	10-D	PLUG	S45C	1	R3/8
453	HEXAGON SOCKET HEAD CAP SCREW	SCM435	2	M5x12	9	O-RING	FKM	1	JIS B2401 P46	9	O-RING	FKM	1	JIS B2401 P46
453	HEXAGON NUT	S45C	1	M24	4	EYEBOLT	SS400	1	M20	4	EYEBOLT	SS400	1	M20
453	HEXAGON SOCKET HEAD CAP SCREW	SCM435	1	M4x10	2	HEXAGON SOCKET HEAD CAP SCREW	SCM435	52	M12x40	2	HEXAGON SOCKET HEAD CAP SCREW	SCM435	52	M12x40
453	HEXAGON NUT	S45C	1	M24	10-D	PLUG	S45C	1	R3/8	10-D	PLUG	S45C	1	R3/8
453	HEXAGON SOCKET HEAD CAP SCREW	SCM435	2	M5x12	9	O-RING	FKM	1	JIS B2401 P46	9	O-RING	FKM	1	JIS B2401 P46
453	HEXAGON NUT	S45C	1	M24	4	EYEBOLT	SS400	1	M20	4	EYEBOLT	SS400	1	M20
453	HEXAGON SOCKET HEAD CAP SCREW	SCM435	1	M4x10	2	HEXAGON SOCKET HEAD CAP SCREW	SCM435	52	M12x40	2	HEXAGON SOCKET HEAD CAP SCREW	SCM435	52	M12x40
453	HEXAGON NUT	S45C	1	M24	10-D	PLUG	S45C	1	R3/8	10-D	PLUG	S45C	1	R3/8
453	HEXAGON SOCKET HEAD CAP SCREW	SCM435	2	M5x12	9	O-RING	FKM	1	JIS B2401 P46	9	O-RING	FKM	1	JIS B2401 P46
453	HEXAGON NUT	S45C	1	M24	4	EYEBOLT	SS400	1	M20	4	EYEBOLT	SS400	1	M20
453	HEXAGON SOCKET HEAD CAP SCREW	SCM435	1	M4x10	2	HEXAGON SOCKET HEAD CAP SCREW	SCM435	52	M12x40	2	HEXAGON SOCKET HEAD CAP SCREW	SCM435	52	M12x40
453	HEXAGON NUT	S45C	1	M24	10-D	PLUG	S45C	1	R3/8	10-D	PLUG	S45C	1	R3/8
453	HEXAGON SOCKET HEAD CAP SCREW	SCM435	2	M5x12	9	O-RING	FKM	1	JIS B2401 P46	9	O-RING	FKM	1	JIS B2401 P46
453	HEXAGON NUT	S45C	1	M24	4	EYEBOLT	SS400	1	M20	4	EYEBOLT	SS400	1	M20
453	HEXAGON SOCKET HEAD CAP SCREW	SCM435	1	M4x10	2	HEXAGON SOCKET HEAD CAP SCREW	SCM435	52	M12x40	2	HEXAGON SOCKET HEAD CAP SCREW	SCM435	52	M12x40
453	HEXAGON NUT	S45C	1	M24	10-D	PLUG	S45C	1	R3/8	10-D	PLUG	S45C	1	R3/8
453	HEXAGON SOCKET HEAD CAP SCREW	SCM435	2	M5x12	9	O-RING	FKM	1	JIS B2401 P46	9	O-RING	FKM	1	JIS B2401 P46
453	HEXAGON NUT	S45C	1	M24	4	EYEBOLT	SS400	1	M20	4	EYEBOLT	SS400	1	M20
453	HEXAGON SOCKET HEAD CAP SCREW	SCM435	1	M4x10	2	HEXAGON SOCKET HEAD CAP SCREW	SCM435	52	M12x40	2	HEXAGON SOCKET HEAD CAP SCREW	SCM435	52	M12x40
453	HEXAGON NUT	S45C	1	M24	10-D	PLUG	S45C	1	R3/8	10-D	PLUG	S45C	1	R3/8
453	HEXAGON SOCKET HEAD CAP SCREW	SCM435	2	M5x12	9	O-RING	FKM							



CASING : FC300  
 O-RING : FKM  
 ROTOR : FCD600  
 SHAFT SEAL : DOUBLE TYPE  
 (BBS1x2)  
 JOINT : Rc

ME24-11MPE0240063/P160VSD-M  
 S/N 1656466  
 1656467

★ SPECIAL PARTS

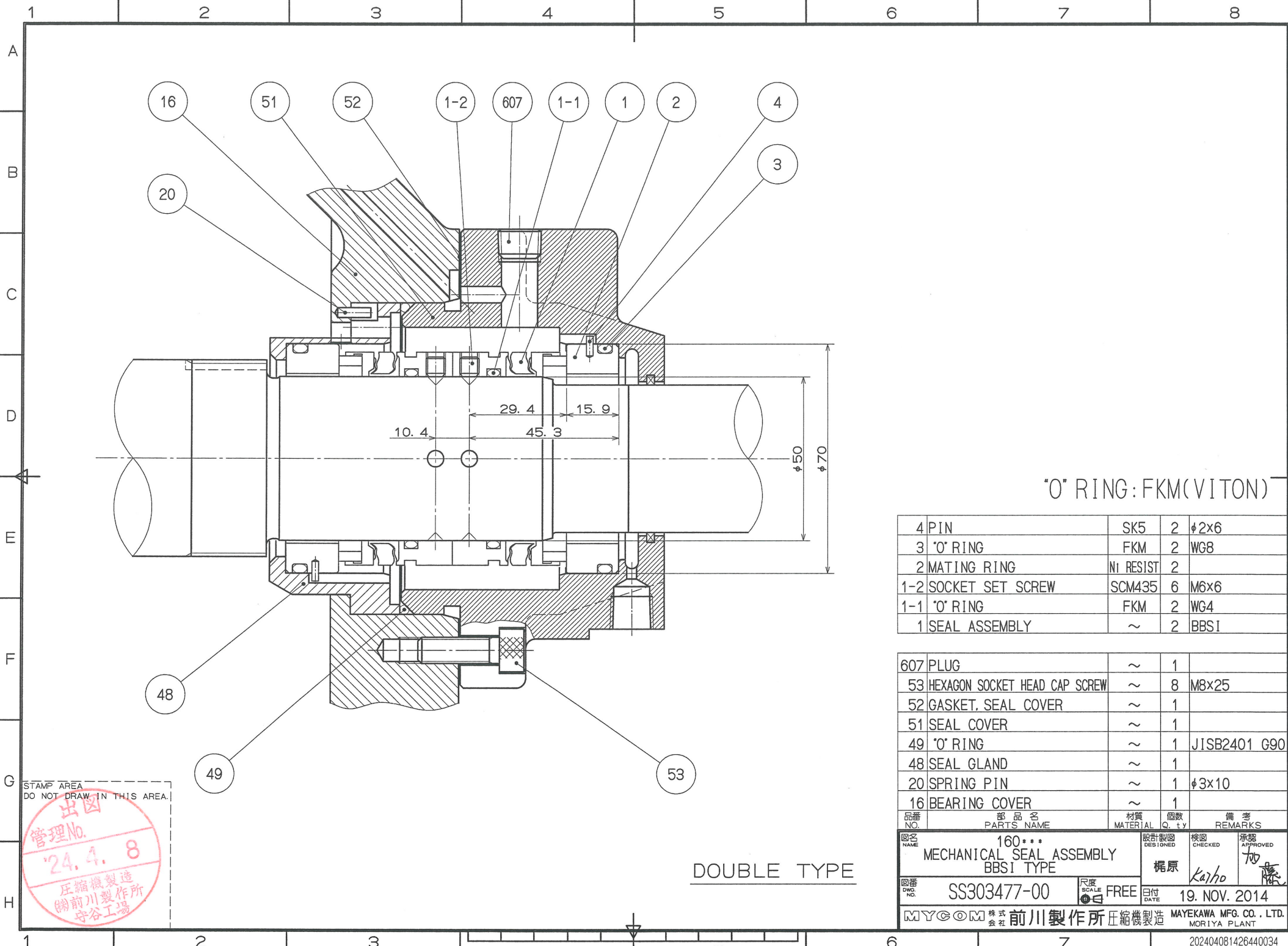
INTRINSIC SAFETY TYPE UNLOADER INDICATOR

NO.	部	品	名	材	質	個	数	備	考	NO.	部	品	名	材	質	個	数	備	考	
NO.	PARTS NAME	MATERIAL	Q. ty	REMARKS	NO.	PARTS NAME	MATERIAL	Q. ty	REMARKS											
					49	O-RING	FKM	1	JIS B2401 G90	★20	SPRING PIN	S60CM	1	φ3x10						
					48	RETAINER OIL SEAL	SS400	1	160V** BBS1 TYPE	★19	PARALLEL PIN	S45C	2	φ10x40						
					43	THRUST BEARING GLAND	S45C	2		18-2	HEXAGON SOCKET HEAD CAP SCREW	SCM435	7	M12x80						
					42	SPACER THRUST BEARING ALIGNMENT	S45C	2		17	GASKET BEARING COVER	NON-ASBESTOS	1							
					41	SPACER THRUST BEARING OUTER RACE	S45C	2		16	BEARING COVER	FC300	1							
745	RIVET	SUS304	4	φ3x6	40	LOCKWASHER	SPCC	2	AW12	14	SPRING PIN	S60CM	2	φ4x10						
607-B	PLUG	S45C	1	R1/4	39	LOCKNUT	SS400	2	AN12	12	GASKET BEARING HEAD	NON-ASBESTOS	1							
607-A	PLUG	S45C	1	R1/4	38	THRUST BEARING ASSEMBLY	~	2set	7212B	11	BEARING HEAD	FC300	1							★
605	PLUG	S45C	1	R1/2	37	STOP RING	SUP3	2	H102	10-C	PLUG	S45C	1	R3/8						
459	PLUG	S45C	1	R1/2	36	SPACER	SS400	1		10-B	PLUG	S45C	1	R1/4						
458	PLUG	S45C	4	R1/8	35	O-RING	FKM	1	JIS B2401 G95	★10-A	PLUG	S45C	1	R1/4						
433	O-RING	FKM	4	JIS B2401 G85	★34	SET SCREW	SCM435	2	M6x15	8	SPRING PIN	S60CM	2	φ4x10						
432	O-RING	FKM	4	JIS B2401 G85	★33	SLEEVE BALANCE PISTON	FC300	1	160**H	6	GASKET SUCTION COVER	NON-ASBESTOS	1							
250	THRUST WASHER	S45C	2		32	STOP RING	SUP3	1	S50	5	SUCTION COVER	FC300	1							
237	TORSIONAL SLIP WASHER	SK5	2		31	KEY BALANCE PISTON	S45C	1		3	PARALLEL PIN	S45C	4	φ13x40						
234	NAME PLATE	SUS304	1		30	MAIN BEARING	S45C	1	160**H	1	MAIN ROTOR CASING	FC300	1	160VS*						
120	ASSEMBLY UNLOADER INDICATOR	~	1set	IND-052EP	★29	STOP RING	SUP3	4	H102											
100	MECHANICAL SEAL ASSY.	~	1set	160** BBS1x2 TYPE	★28	SIDE BEARING	STKM13A/WJ2	2												
53	HEXAGON SOCKET HEAD CAP SCREW	SCM435	8	M8x25	27	MAIN BEARING	STKM13A/WJ2	2												
52	GASKET SEAL COVER	NON-ASBESTOS	1		26	FEMALE ROTOR	FCD600	1	160VS*											
51	SEAL COVER	FC300	1	160V** BBS1 TYPE	★25	MALE ROTOR	FCD600	1	160VS*	★										

図名 SECTIONAL ARRANGEMENT 160VSD  
 図番 SS213020-00(2/2)  
 縮尺 1:2.5  
 日付 8. APR. 2024  
 設計者 Kisho  
 承認者 Kisho  
 川崎  
 MYCOM 株式会社 前川製作所 縮機製造  
 MAYEKAWA MFG. CO., LTD.  
 MORTIYA PLANT  
 202404191539530005

出図  
 管理No.  
 24.4.20  
 圧縮機製造  
 前川製作所  
 守谷工場

STAMP AREA DO NOT DRAW IN THIS AREA.



\*O\* RING:FKM(VITON)

4 PIN	SK5	2	φ2x6
3 *O* RING	FKM	2	WG8
2 MATING RING	NI RESIST	2	
1-2 SOCKET SET SCREW	SCM435	6	M6x6
1-1 *O* RING	FKM	2	WG4
1 SEAL ASSEMBLY	~	2	BBSI

607 PLUG	~	1	
53 HEXAGON SOCKET HEAD CAP SCREW	~	8	M8x25
52 GASKET, SEAL COVER	~	1	
51 SEAL COVER	~	1	
49 *O* RING	~	1	JISB2401 G90
48 SEAL GLAND	~	1	
20 SPRING PIN	~	1	φ3x10
16 BEARING COVER	~	1	

品番 NO.	部品名 PARTS NAME	材質 MATERIAL	個数 Q. ty	備考 REMARKS
160***	MECHANICAL SEAL ASSEMBLY BBSI TYPE			
図番 DWG. NO.	SS303477-00	尺度 SCALE	FREE	日付 DATE
		19. NOV. 2014		
MYCOM 株式会社 前川製作所 圧縮機製造		MAYEKAWA MFG. CO., LTD. MORIYA PLANT		

DOUBLE TYPE

STAMP AREA  
DO NOT DRAW IN THIS AREA.

出図  
管理No.  
24.4.8  
圧縮機製造  
前川製作所  
守谷工場