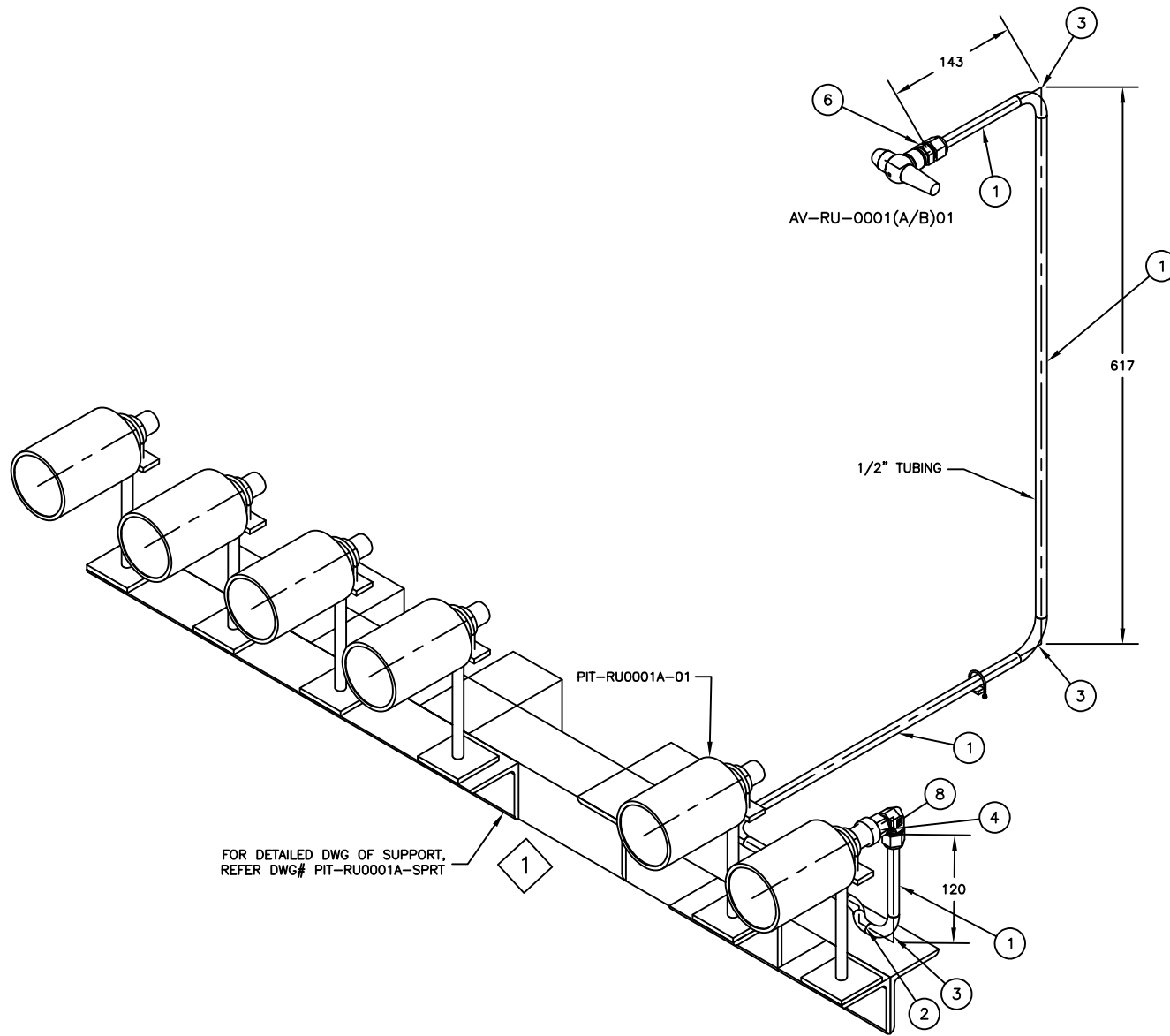


BILL OF MATERIALS			
ID	QTY	SCH/CLASS	DESCRIPTION
1	1650 MM		TUBING, ASTM A269, SEAMLESS - 316SS
2	2		BEND 45 5R, TUBING, ASTM A269, 316SS
3	4		BEND 90 5R, TUBING, ASTM A269, 316SS
4	1		MaleStub1/2NPT(M) x 1/2"Tube
5	6		PRESSURE TRANSMITTER 1/2" NPT(F)
6	1		Male Connector 3/8 NPT x 1/2 T
7	1		ANGLE VALVE 3/8" NPT(M) X 3/8" NPT(F)
8	1		Female Union Elbow 1/2" T x 1/2"T
9	2		U-clamp

NOTES:

1. ALL TAGS ARE LABELED AS FOLLOWS,
PIT-RU0001(A/B)-01 WHERE 'A' STANDS FOR UNIT 1 &
'B' STANDS FOR UNIT 2.

FOR EXAMPLE:
- PIT-RU0001A-01 FOR UNIT 1
- PIT-RU0001B-01 FOR UNIT 2

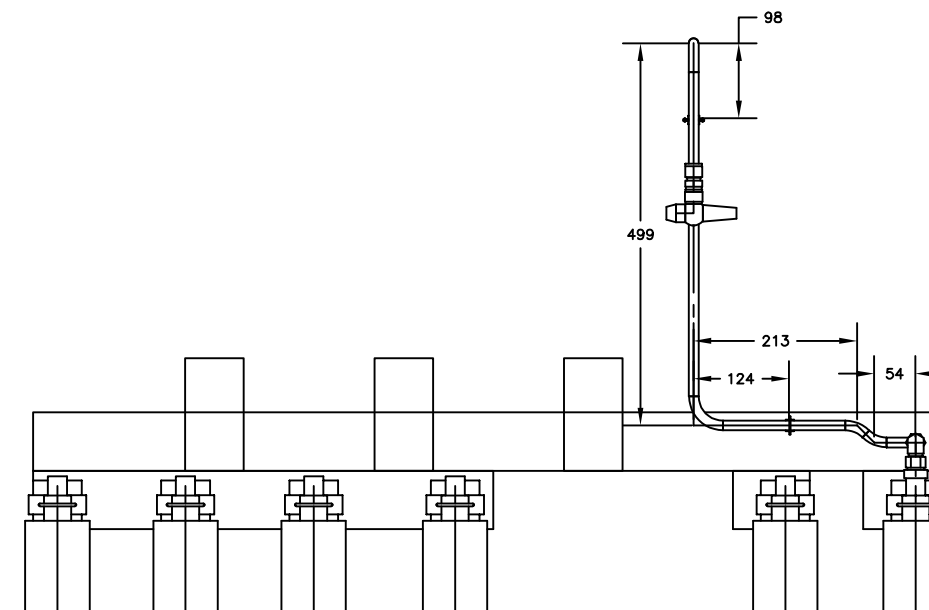


Please add 2 way manifold (Both sides NPTF). It will be purchased from manual valve manufacturer. please add this manifold in part list

MME : NOTED, WILL BE REVISED ACCORDINGLY.

NPTM

MME: NOTED



0	F	15.08.24	FOR APPROVAL	AJD	AJD	IES	SES
REV.	STATUS	DATE	PURPOSE OF ISSUE	PREP.	CHKD.	APPD.	AUTH.
CLIENT: ENER TECHNOLOGI			PROPANE REFRIGERATION PACKAGE				
SERVICE: IRAG			RU-0001 AB				
LOCATION: UNIT TAG NO:							
VENDOR LOGO							
Contract No. P.O. No.			ENER-MME-2024-100-001		SCALE		
DRAWING TITLE: PIT-RU0001(A/B)-01 HOOKUP DRAWING							
DRAWING NO. MPE007- PIT-RU0001(A/B)-01			REV.	SHEET No.	SIZE		
			0	1 OF 1	D		