

L21S/SR/ST – Glass Level Gauges

Type of code

Example: L21ST/1450/AANSI 3/4" 150Lb RF/Large chamber

Code					
1	Basic type				
	L21				
2	Type of gauge				
	S	Tubular level gauge			
	SR	Level gauge with reflex glasses			
	ST	Level gauge with transparent glasses			
3	Distance Centre-to-Centre				
	X	Distance between flanges centres in mm			
4	Process connections				
	STEP 1	STEP 2	STEP 3	STEP 4	STEP 5
	- type of connect	- norm of flange	- nominal pipe size	- nominal pressure	- type of sealing surfaces
	A - horizontal	ANSI, ASME	3/4" etc.	150Lb etc.	RF etc.
	B - vertical	GOST	DN40 etc.	PN50 etc.	1 etc.
	C - vertical inlet, horizontal outlet	EN	DN40 etc.	PN50 etc.	B1 etc.
D - horizontal intel, vertical outlet	DIN, etc.	3/4" etc.	150Lb etc.		

5. Other parameters must be specified in inquiry/order.

For example:

- Backlight
- Large chamber
- Connecting cocks
- Type of draining and venting
- Special type of connect

Description

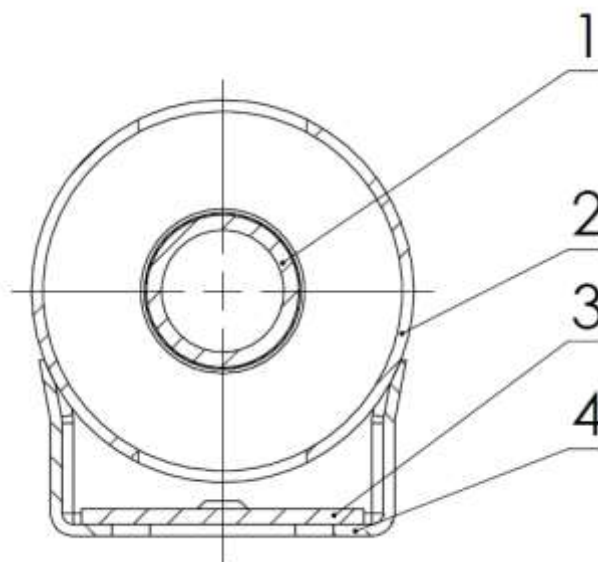
EMKOMETER supplies many types of level gauges for many uses. Every gauge is for special application. It can be used for liquids and gases. Construction depends on type of media, operating pressure and temperature. Gauges are connected by flanges vertically to the side of the tank, in which levels should be monitored, or interface level of the liquid. It works on the principle of communicating vessels. Our main types of glass level gauges are transparent, reflex and classic glass level gauges.

Type of Gauges

Tubular Glass Level Gauge

These level gauges are for direct monitoring of the liquid level in pressure and non-pressure tanks. The level gauge must not be exposed to pressure surges, vibration and shock. It can be used below 16 bar and temperature range from - 30 °C to + 180 °C.

Schematic picture:

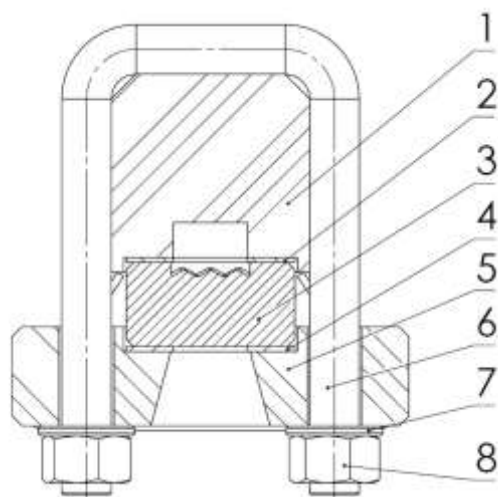


- 1) Glass body
- 2) Safety cover
- 3) Protective glass
- 4) Cover

Reflex Glass Level Gauges

Light is reflected by the prismatic grooves on glass and we can see, where the level of medium is. EMKOMETER supplies from 150 ANSI pressure class to 600 ANSI. These level gauges can be used for application with pressure below 35 bar.

Schematic picture:

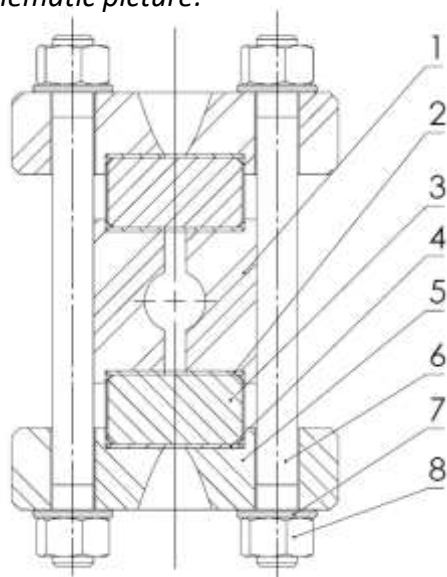


- 1) Body
- 2) Sealing gasket
- 3) Reflex glass
- 4) Cushion gasket
- 5) Pressure plate
- 6) Bolt
- 7) Washer
- 8) Nut

Transparent Glass Level Gauges

Medium is between two transparent glasses, pressed by two pressure plates. EMKOMETER supplies from 150 ANSI pressure class to 600 ANSI. These level gauges can be improved by mica shields for more types of medium and higher pressure and temperature. Another special improve can be light for better view of level in dark environment mounted on their rear side.

Schematic picture:



- 1) Body
- 2) Sealing gasket
- 3) Transparent glass
- 4) Cushion gasket
- 5) Pressure plate
- 6) Bolt
- 7) Washer
- 8) Nut

Tubular Glass Level Gauges - L21S

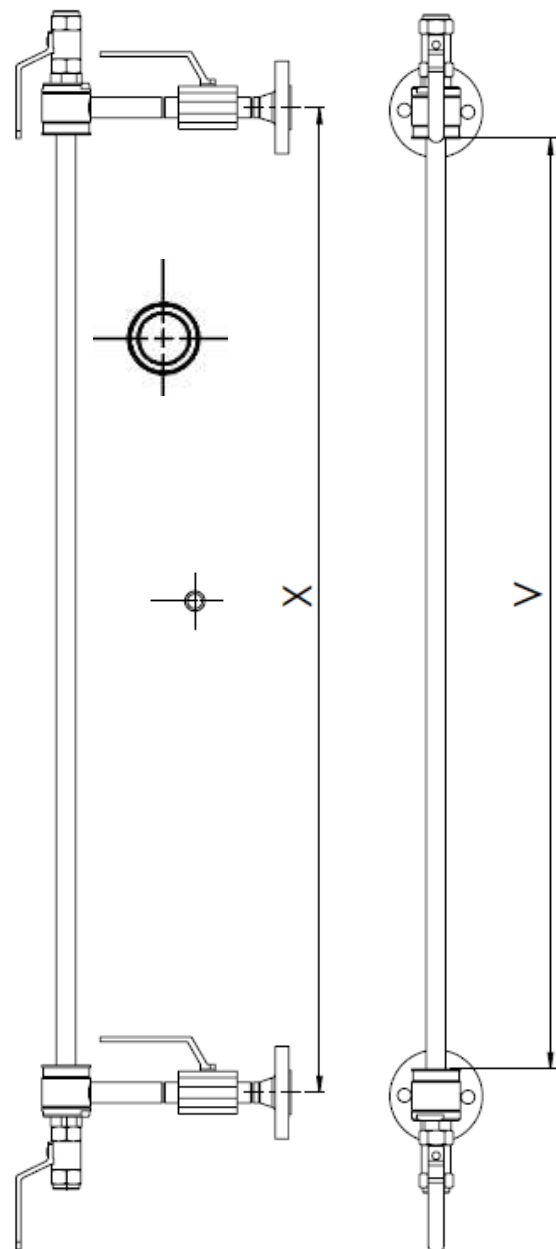
- without cover

These gauges are normally used in non-pressurized and non-dangerous fluid systems.

Technical data	
Service conditions	
Pressure max.	16 bar
Temperature range	-30 to +200°C
Pressure class	150 (PN6-PN16)
Distance Centre-to-Centre (X)	to 3000 mm

Possible accessories

- Connecting cocks
- Type of draining and venting
- Cover
- SPJ switch
- Float



Tubular Glass Level Gauges - L21S

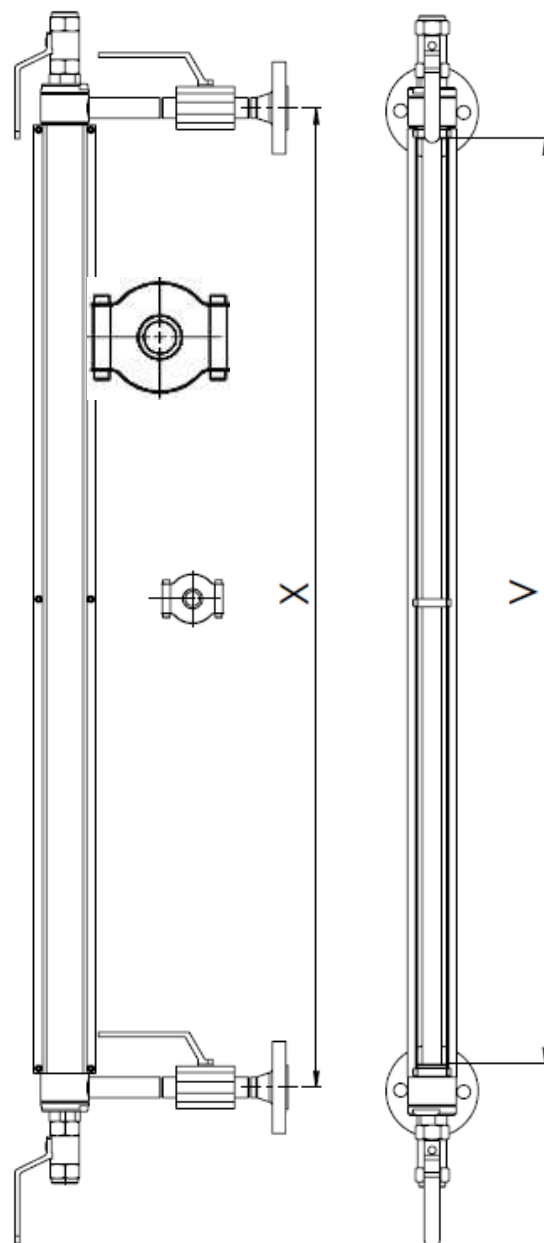
- with two covers on sides

These gauges are normally used in non-pressurized and non-dangerous fluid systems. Measuring glass tube is protected by a two safety covers from stainless steel on sides.

Technical data	
Service conditions	
Pressure max.	16 bar
Temperature range	-30 to +200°C
Pressure class	150 (PN6-PN16)
Distance Centre-to-Centre (X)	to 3000 mm

Possible accessories

- Connecting cocks
- Type of draining and venting
- SPJ switch
- Float



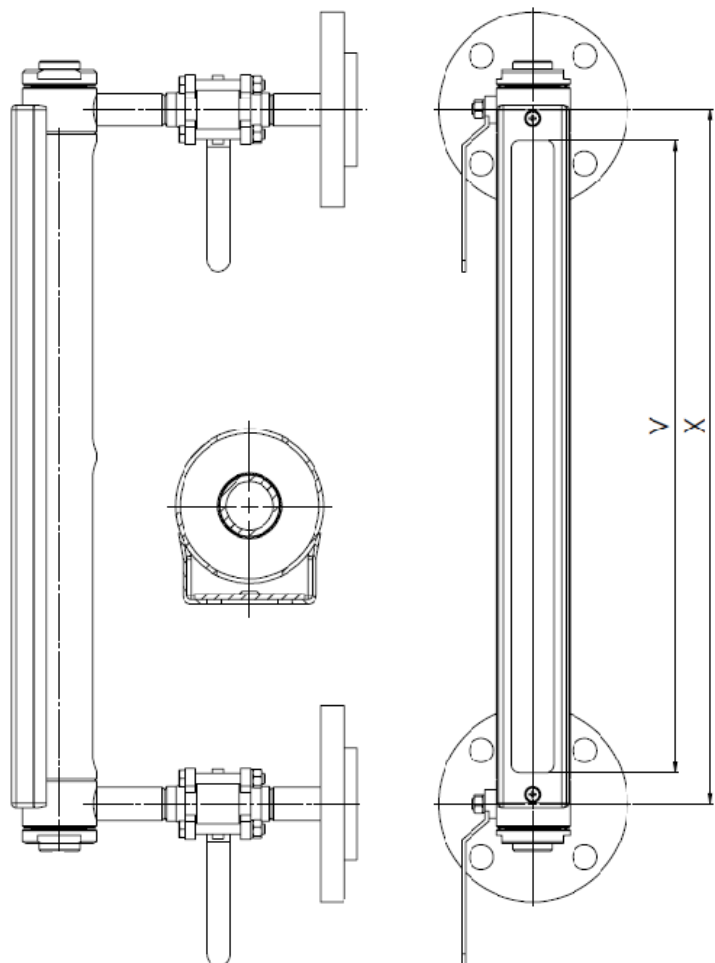
Tubular Glass Level Gauges - L21S

Measuring glass tube is protected by a safety cover from stainless steel and glass shield.

Technical data	
Service conditions	
Pressure max.	16 bar
Temperature range	-30 to +200°C
Pressure class	150 (PN6-PN16)
Distance Centre-to-Centre (X)	to 3000 mm

Possible accessories

- Connecting cocks
- Type of draining and venting
- Cover
- SPJ switch
- Float



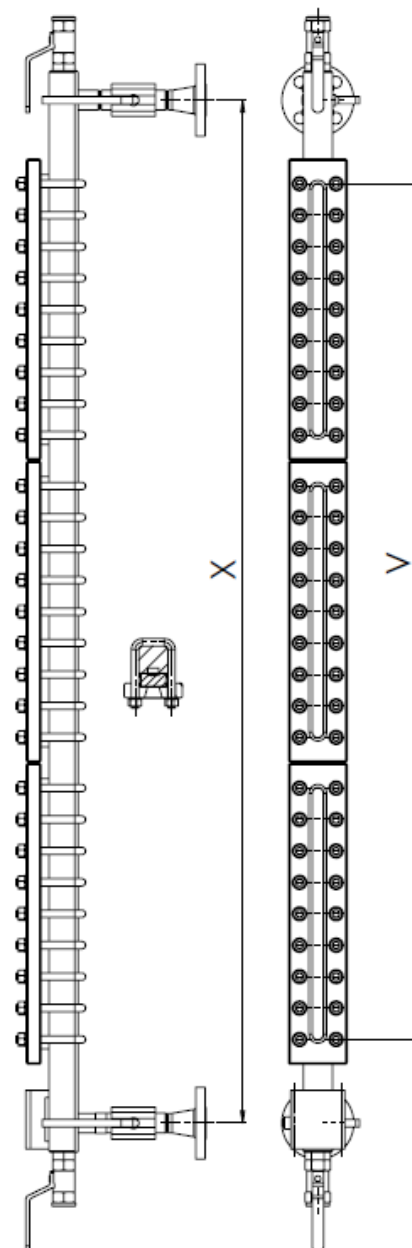
Reflex Glass Level Gauges - L21SR

Reflex version can be used for media with significant glass attack (saturated steam, HPHW, alkalis...) with pressure below 35 bar and temperature below 253°C. For media with no significant glass attack can be used for temperature below 430°C and pressure below 400 bar (temperature depends on the pressure - higher temperature means lower pressure and conversely).

Technical data	
Pressure max.	400 bar
Temperature max.	430°C
Pressure class	150-600 (PN16-PN100)
Distance Centre-to-Centre (X)	min. 140 mm to max. 3000 mm

Possible accessories

- Connecting cocks
- Type of draining and venting



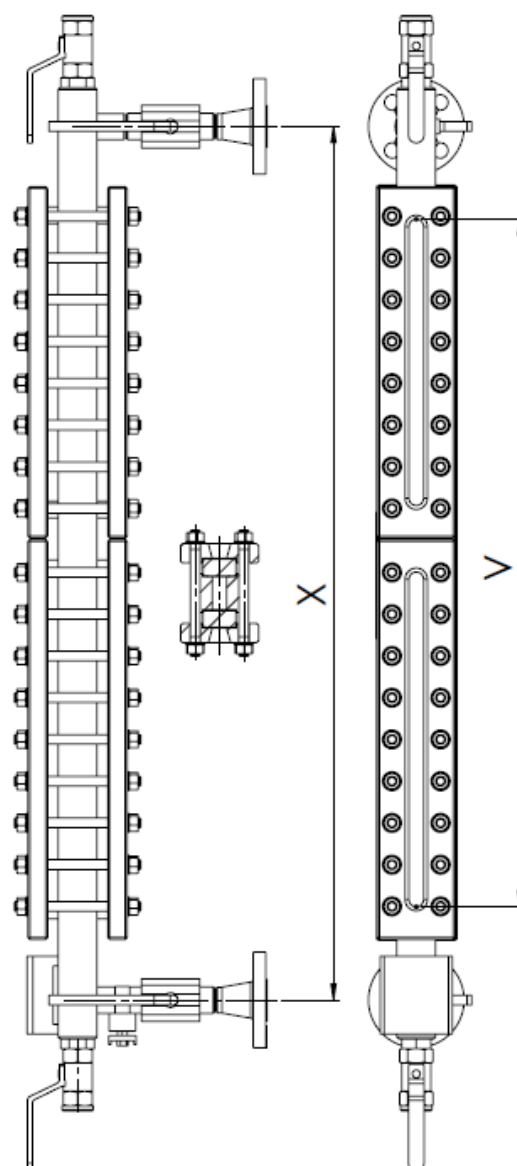
Transparent Glass Level Gauges - L21ST

Transparent version can be used for media with significant glass attack (saturated steam, HPHW, alkalis...) with pressure below 35 bar and temperature below 356°C. For media with no significant glass attack can be used for pressure below 430°C and below 400 bar (temperature depends on the pressure - higher temperature means lower pressure and conversely). For steam with pressure up to 35 bar or for media which cause rapid wear of glass must be used mica shields.

Technical data	
Pressure max.	400 bar
Temperature max.	430°C
Pressure class	150-600 (PN16-PN100)
Distance Centre-to-Centre (X)	min. 140 mm to max. 3000 mm

Possible accessories

- Backlight
- Connecting cocks
- Type of draining and venting



Large Chamber

This special version can be made like reflex and transparent gauges.

Reflex version

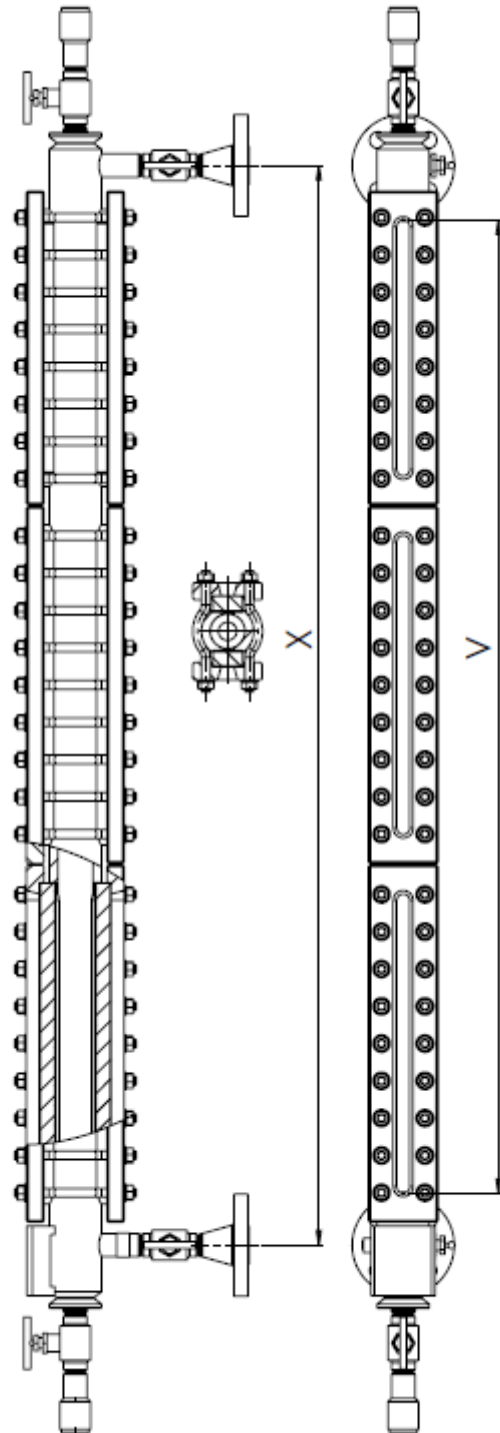
Reflex version can be used for media with significant glass attack (saturated steam, HPHW, alkalis...) with pressure below 35 bar and temperature below 253°C. For media with no significant glass attack can be used for pressure below 430°C and below 400 bar (temperature depends on the pressure - higher temperature means lower pressure and conversely)

Technical data	
Pressure max.	400 bar
Temperature max.	430°C
Pressure class	150-600 (PN16-PN100)
Distance Centre-to-Centre (X)	min. 140 mm to max. 3000 mm

Transparent version

Transparent version can be used for more media with significant glass attack because these gauges can be improved by mica shields.

Technical data	
Pressure max.	400 bar
Temperature max.	430°C
Pressure class	150-600 (PN16-PN100)
Distance Centre-to-Centre (X)	min. 140 mm to max. 3000 mm



L21ST - with backlight

Technical data	
Pressure max.	400 bar
Temperature max.	430°C
Pressure class	150-600 (PN16-PN100)
Distance Centre-to-Centre (X)	min. 140 mm to max. 3000 mm

