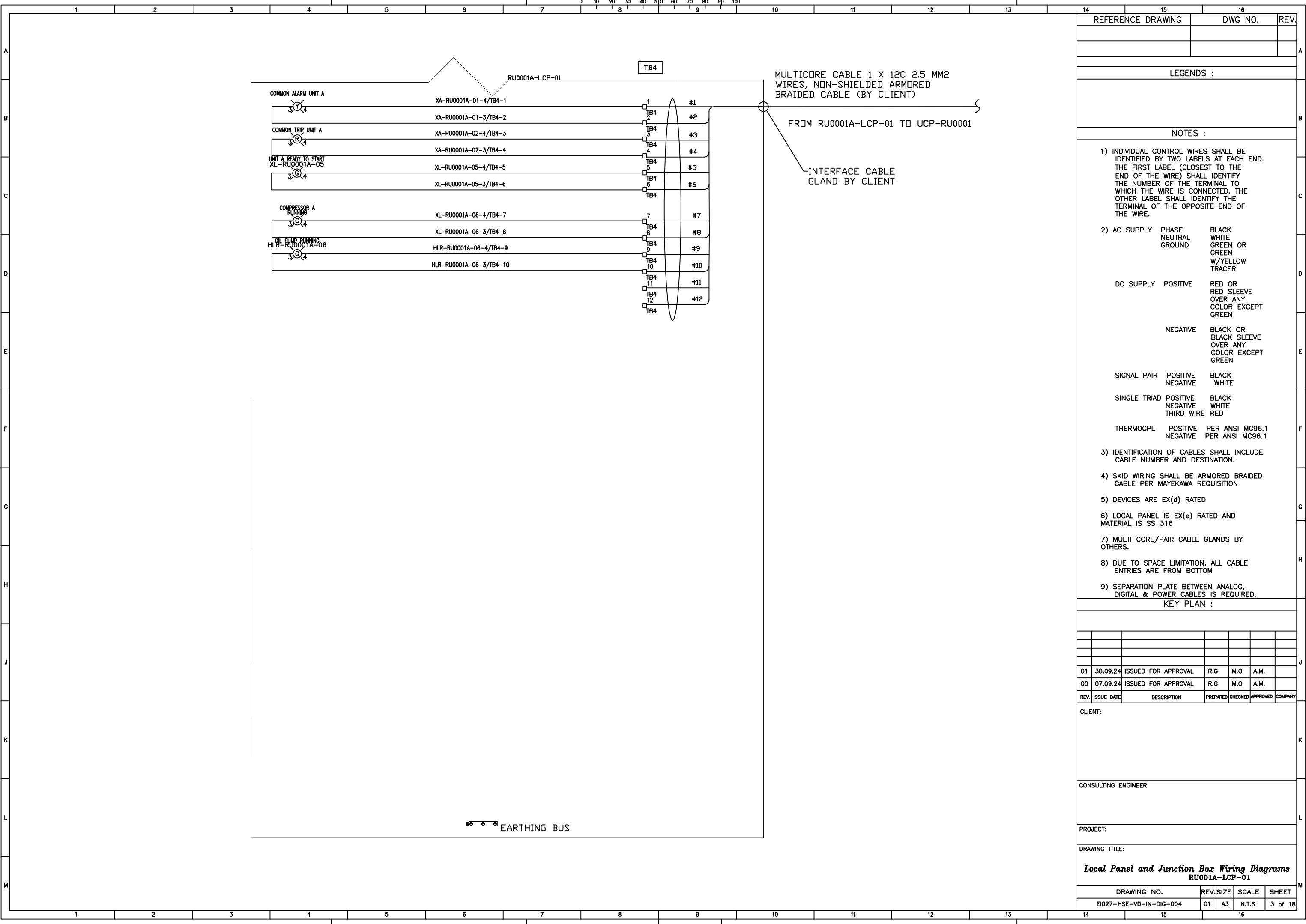


15	16	REV.				
REFERENCE DRAWING	DWG NO.					
LEGENDS :						
NOTES :						
1) INDIVIDUAL CONTROL WIRES SHALL BE IDENTIFIED BY TWO LABELS AT EACH END. THE FIRST LABEL (CLOSEST TO THE END OF THE WIRE) SHALL IDENTIFY THE NUMBER OF THE TERMINAL TO WHICH THE WIRE IS CONNECTED. THE OTHER LABEL SHALL IDENTIFY THE TERMINAL OF THE OPPOSITE END OF THE WIRE.						
2) AC SUPPLY	PHASE NEUTRAL GROUND	BLACK WHITE GREEN OR GREEN W/YELLOW TRACER				
DC SUPPLY	POSITIVE	RED OR RED SLEEVE OVER ANY COLOR EXCEPT GREEN				
	NEGATIVE	BLACK OR BLACK SLEEVE OVER ANY COLOR EXCEPT GREEN				
SIGNAL PAIR	POSITIVE NEGATIVE	BLACK WHITE				
SINGLE TRIAD	POSITIVE NEGATIVE THIRD WIRE	BLACK WHITE RED				
THERMOCP	POSITIVE NEGATIVE	PER ANSI MC96.1 PER ANSI MC96.1				
3) IDENTIFICATION OF CABLES SHALL INCLUDE CABLE NUMBER AND DESTINATION.						
4) SKID WIRING SHALL BE ARMORED BRAIDED CABLE PER MAYEKAWA REQUISITION						
5) DEVICES ARE EX(d) RATED						
6) LOCAL PANEL IS EX(e) RATED AND MATERIAL IS SS 316						
7) MULTI CORE/PAIR CABLE GLANDS BY OTHERS.						
8) DUE TO SPACE LIMITATION, ALL CABLE ENTRIES ARE FROM BOTTOM						
9) SEPARATION PLATE BETWEEN ANALOG, DIGITAL & POWER CABLES IS REQUIRED.						
KEY PLAN :						
01	30.09.24	ISSUED FOR APPROVAL	R.G	M.O	A.M.	
00	07.09.24	ISSUED FOR APPROVAL	R.G	M.O	A.M.	
REV.	ISSUE DATE	DESCRIPTION	PREPARED	CHECKED	APPROVED	COMPANY
CLIENT:						
CONSULTING ENGINEER						
PROJECT:						
DRAWING TITLE:						
<b>Local Panel and Junction Box Wiring Diagrams</b>						
<b>RU001A-LCP-01</b>						
DRAWING NO.	REV.	SIZE	SCALE	SHEET		
EI027-HSE-VD-IN-DIG-004	01	A3	N.T.S	2 of 18		



REFERENCE DRAWING	DWG NO.	REV.

LEGENDS :

- NOTES :
- INDIVIDUAL CONTROL WIRES SHALL BE IDENTIFIED BY TWO LABELS AT EACH END. THE FIRST LABEL (CLOSEST TO THE END OF THE WIRE) SHALL IDENTIFY THE NUMBER OF THE TERMINAL TO WHICH THE WIRE IS CONNECTED. THE OTHER LABEL SHALL IDENTIFY THE TERMINAL OF THE OPPOSITE END OF THE WIRE.
  - AC SUPPLY PHASE: BLACK, WHITE, GREEN OR W/YELLOW TRACER  
 NEUTRAL: GREEN  
 GROUND: W/YELLOW TRACER  
 DC SUPPLY POSITIVE: RED OR RED SLEEVE OVER ANY COLOR EXCEPT GREEN  
 NEGATIVE: BLACK OR BLACK SLEEVE OVER ANY COLOR EXCEPT GREEN  
 SIGNAL PAIR POSITIVE: BLACK, NEGATIVE: WHITE  
 SINGLE TRIAD POSITIVE: BLACK, NEGATIVE: WHITE, THIRD WIRE: RED  
 THERMOCPPL POSITIVE: PER ANSI MC96.1, NEGATIVE: PER ANSI MC96.1
  - IDENTIFICATION OF CABLES SHALL INCLUDE CABLE NUMBER AND DESTINATION.
  - SKID WIRING SHALL BE ARMORED BRAIDED CABLE PER MAYEKAWA REQUISITION
  - DEVICES ARE EX(d) RATED
  - LOCAL PANEL IS EX(e) RATED AND MATERIAL IS SS 316
  - MULTI CORE/PAIR CABLE GLANDS BY OTHERS.
  - DUE TO SPACE LIMITATION, ALL CABLE ENTRIES ARE FROM BOTTOM
  - SEPARATION PLATE BETWEEN ANALOG, DIGITAL & POWER CABLES IS REQUIRED.

KEY PLAN :

REV.	ISSUE DATE	DESCRIPTION	PREPARED	CHECKED	APPROVED	COMPANY
01	30.09.24	ISSUED FOR APPROVAL	R.G	M.O	A.M.	
00	07.09.24	ISSUED FOR APPROVAL	R.G	M.O	A.M.	

CLIENT:

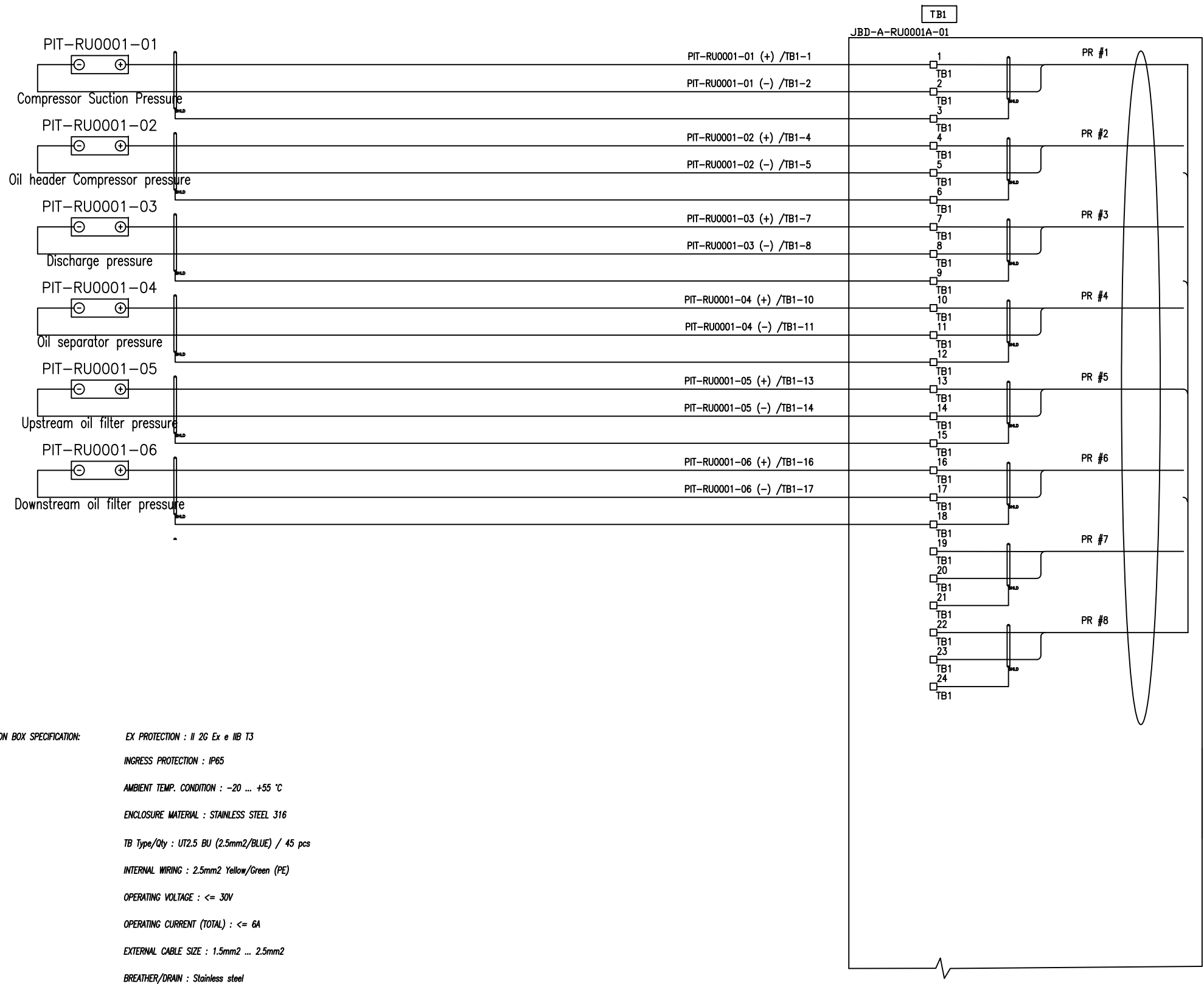
CONSULTING ENGINEER

PROJECT:

DRAWING TITLE:

**Local Panel and Junction Box Wiring Diagrams**  
**RU001A-LCP-01**

DRAWING NO.	REV.	SIZE	SCALE	SHEET
EI027-HSE-VD-IN-DIG-004	01	A3	N.T.S	3 of 18



**JUNCTION BOX SPECIFICATION:**

- EX PROTECTION : II 2G Ex e IIB T3
- INGRESS PROTECTION : IP65
- AMBIENT TEMP. CONDITION : -20 ... +55 °C
- ENCLOSURE MATERIAL : STAINLESS STEEL 316
- TB Type/Qty : UT2.5 BU (2.5mm<sup>2</sup>/BLUE) / 45 pcs
- INTERNAL WIRING : 2.5mm<sup>2</sup> Yellow/Green (PE)
- OPERATING VOLTAGE : ≤ 30V
- OPERATING CURRENT (TOTAL) : ≤ 6A
- EXTERNAL CABLE SIZE : 1.5mm<sup>2</sup> ... 2.5mm<sup>2</sup>
- BREATHER/DRAIN : Stainless steel
- STOPPING PLUG : Nickel plated brass
- CABLE GLAND : Nickel plated brass
- EARTH BOLT : M8

REFERENCE DRAWING	DWG NO.	REV.
LEGENDS :		
NOTES :		
1) INDIVIDUAL CONTROL WIRES SHALL BE IDENTIFIED BY TWO LABELS AT EACH END. THE FIRST LABEL (CLOSEST TO THE END OF THE WIRE) SHALL IDENTIFY THE NUMBER OF THE TERMINAL TO WHICH THE WIRE IS CONNECTED. THE OTHER LABEL SHALL IDENTIFY THE TERMINAL OF THE OPPOSITE END OF THE WIRE.		
2) AC SUPPLY PHASE		BLACK
NEUTRAL		WHITE
GROUND		GREEN OR GREEN W/YELLOW TRACER
DC SUPPLY POSITIVE		RED OR RED SLEEVE OVER ANY COLOR EXCEPT GREEN
NEGATIVE		BLACK OR BLACK SLEEVE OVER ANY COLOR EXCEPT GREEN
SIGNAL PAIR POSITIVE		BLACK
NEGATIVE		WHITE
SINGLE TRIAD POSITIVE		BLACK
NEGATIVE		WHITE
THIRD WIRE		RED
3) IDENTIFICATION OF CABLES SHALL INCLUDE CABLE NUMBER AND DESTINATION.		
4) SKID WIRING SHALL BE ARMORED BRAIDED CABLE PER MAYEKAWA REQUISITION		
5) DEVICES ARE EX(ia) RATED		
6) JUNCTION BOX IS EX(e) RATED AND MATERIAL IS SS 316		
7) MULTI CORE/PAIR CABLE GLANDS BY OTHERS.		
8) DUE TO SPACE LIMITATION, ALL CABLE ENTRIES ARE FROM BOTTOM		
KEY PLAN :		

REV.	ISSUE DATE	DESCRIPTION	PREPARED	CHECKED	APPROVED	COMPANY
01	30.09.24	ISSUED FOR APPROVAL	R.G	M.O	A.M.	
00	07.09.24	ISSUED FOR APPROVAL	R.G	M.O	A.M.	

CLIENT:

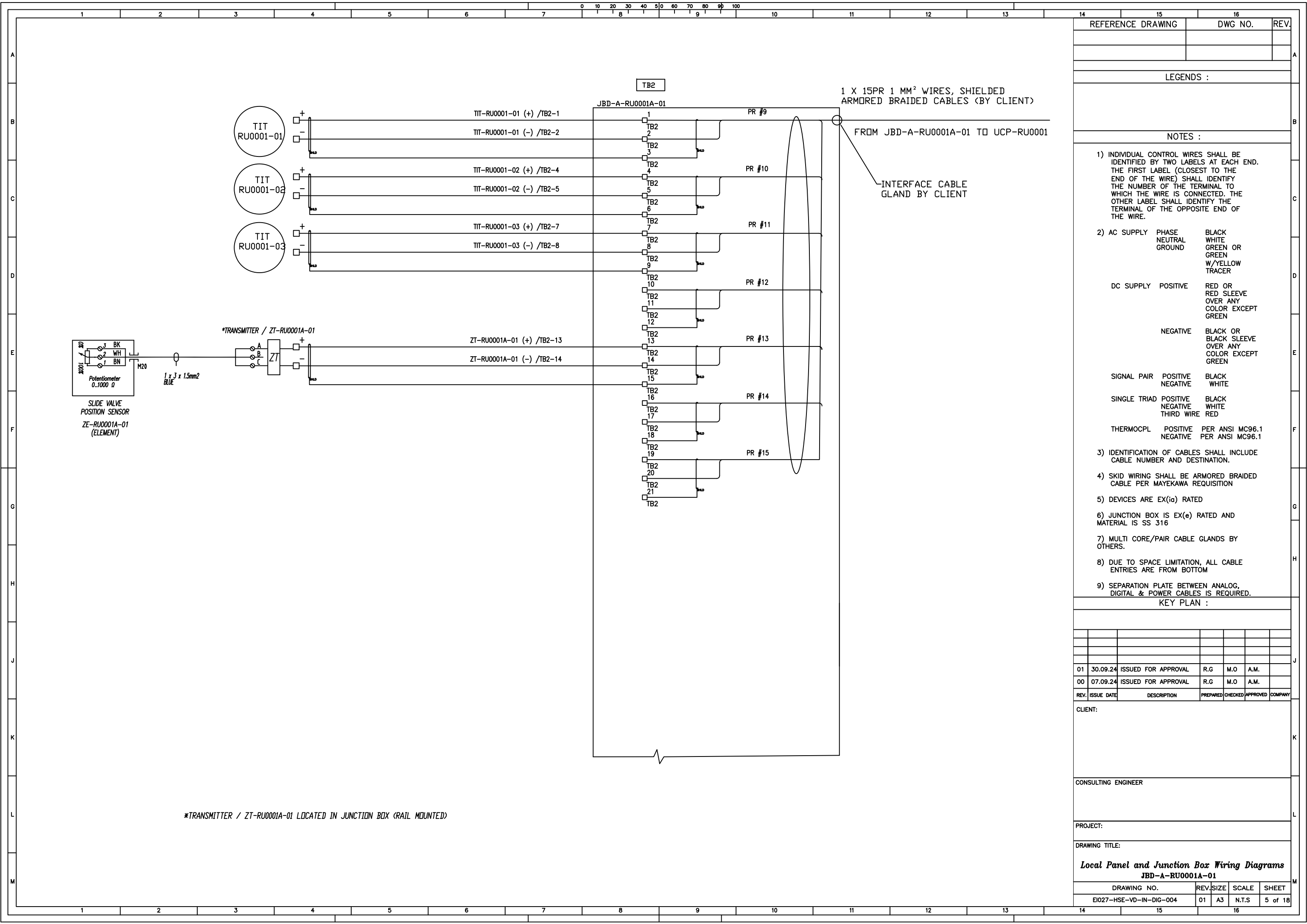
CONSULTING ENGINEER

PROJECT:

DRAWING TITLE:

**Local Panel and Junction Box Wiring Diagrams**  
**JBD-A-RU0001A-01**

DRAWING NO.	REV.	SIZE	SCALE	SHEET
E1027-HSE-VD-IN-DIG-004	01	A3	N.T.S	4 of 18



15	16	REV.
REFERENCE DRAWING	DWG NO.	

LEGENDS :

NOTES :

- INDIVIDUAL CONTROL WIRES SHALL BE IDENTIFIED BY TWO LABELS AT EACH END. THE FIRST LABEL (CLOSEST TO THE END OF THE WIRE) SHALL IDENTIFY THE NUMBER OF THE TERMINAL TO WHICH THE WIRE IS CONNECTED. THE OTHER LABEL SHALL IDENTIFY THE TERMINAL OF THE OPPOSITE END OF THE WIRE.
- AC SUPPLY PHASE: BLACK, NEUTRAL: WHITE, GROUND: GREEN OR GREEN W/YELLOW TRACER.  
DC SUPPLY POSITIVE: RED OR RED SLEEVE OVER ANY COLOR EXCEPT GREEN, NEGATIVE: BLACK OR BLACK SLEEVE OVER ANY COLOR EXCEPT GREEN.
- SIGNAL PAIR POSITIVE: BLACK, NEGATIVE: WHITE.
- SINGLE TRIAD POSITIVE: BLACK, NEGATIVE: WHITE, THIRD WIRE: RED.
- THERMOCP: POSITIVE: PER ANSI MC96.1, NEGATIVE: PER ANSI MC96.1.
- IDENTIFICATION OF CABLES SHALL INCLUDE CABLE NUMBER AND DESTINATION.
- SKID WIRING SHALL BE ARMORED BRAIDED CABLE PER MAYEKAWA REQUISITION.
- DEVICES ARE EX(ia) RATED.
- JUNCTION BOX IS EX(e) RATED AND MATERIAL IS SS 316.
- MULTI CORE/PAIR CABLE GLANDS BY OTHERS.
- DUE TO SPACE LIMITATION, ALL CABLE ENTRIES ARE FROM BOTTOM.
- SEPARATION PLATE BETWEEN ANALOG, DIGITAL & POWER CABLES IS REQUIRED.

KEY PLAN :

01	30.09.24	ISSUED FOR APPROVAL	R.G	M.O	A.M.	
00	07.09.24	ISSUED FOR APPROVAL	R.G	M.O	A.M.	
REV.	ISSUE DATE	DESCRIPTION	PREPARED	CHECKED	APPROVED	COMPANY

CLIENT:

CONSULTING ENGINEER

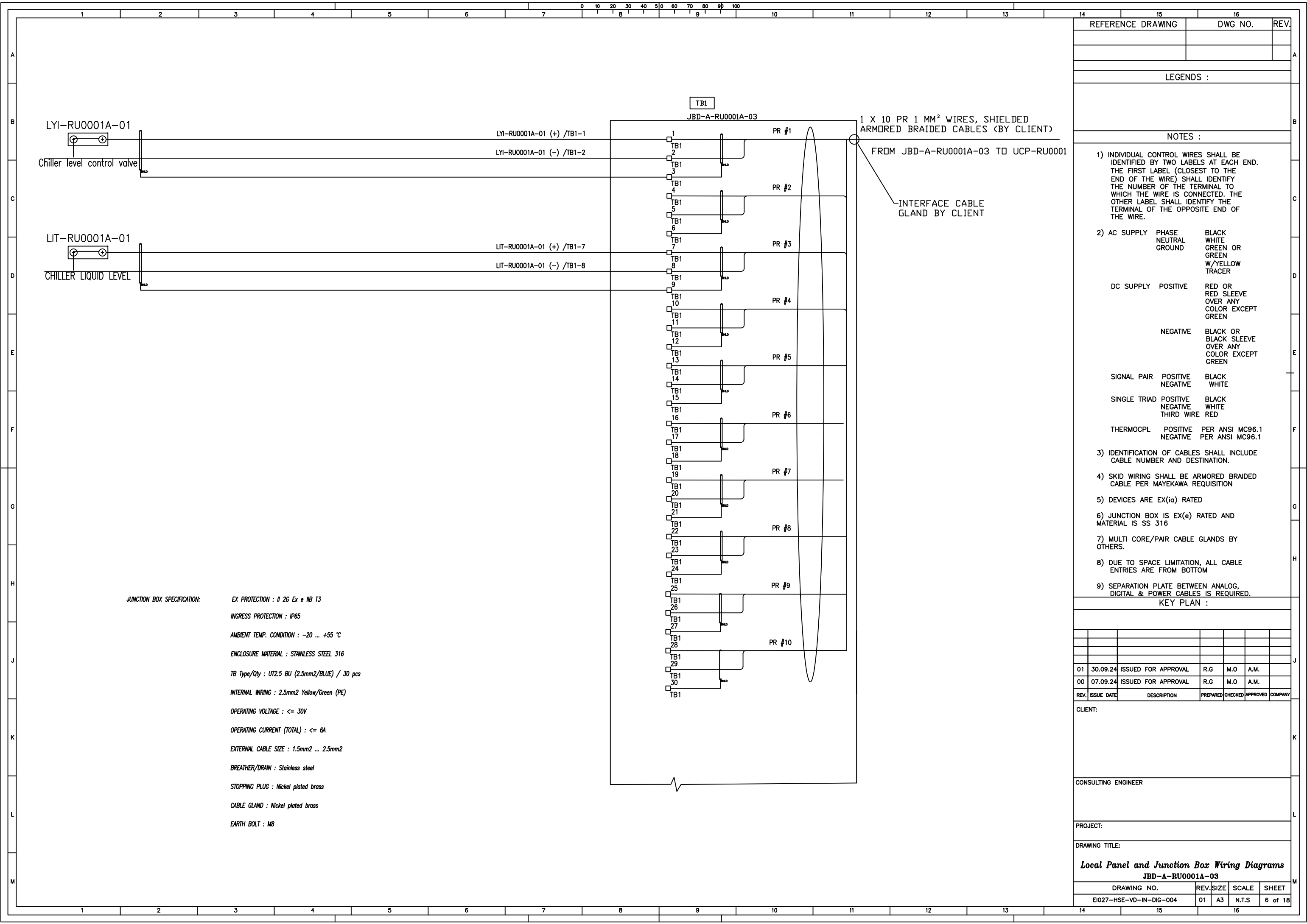
PROJECT:

DRAWING TITLE:

**Local Panel and Junction Box Wiring Diagrams**  
**JBD-A-RU0001A-01**

DRAWING NO.	REV.	SIZE	SCALE	SHEET
EI027-HSE-VD-IN-DIG-004	01	A3	N.T.S	5 of 18

\*TRANSMITTER / ZT-RU0001A-01 LOCATED IN JUNCTION BOX (RAIL MOUNTED)



**JUNCTION BOX SPECIFICATION:**

- EX PROTECTION : II 2G Ex e IIB T3
- INGRESS PROTECTION : IP65
- AMBIENT TEMP. CONDITION : -20 ... +55 °C
- ENCLOSURE MATERIAL : STAINLESS STEEL 316
- TB Type/Qty : UT2.5 BU (2.5mm2/BLUE) / 30 pcs
- INTERNAL WIRING : 2.5mm2 Yellow/Green (PE)
- OPERATING VOLTAGE : <= 30V
- OPERATING CURRENT (TOTAL) : <= 6A
- EXTERNAL CABLE SIZE : 1.5mm2 ... 2.5mm2
- BREATHER/DRAIN : Stainless steel
- STOPPING PLUG : Nickel plated brass
- CABLE GLAND : Nickel plated brass
- EARTH BOLT : M8

REFERENCE DRAWING	DWG NO.	REV.

LEGENDS :

- NOTES :
- 1) INDIVIDUAL CONTROL WIRES SHALL BE IDENTIFIED BY TWO LABELS AT EACH END. THE FIRST LABEL (CLOSEST TO THE END OF THE WIRE) SHALL IDENTIFY THE NUMBER OF THE TERMINAL TO WHICH THE WIRE IS CONNECTED. THE OTHER LABEL SHALL IDENTIFY THE TERMINAL OF THE OPPOSITE END OF THE WIRE.
  - 2) AC SUPPLY
 

PHASE	BLACK
NEUTRAL	WHITE
GROUND	GREEN OR GREEN W/YELLOW TRACER
  - DC SUPPLY
 

POSITIVE	RED OR RED SLEEVE OVER ANY COLOR EXCEPT GREEN
NEGATIVE	BLACK OR BLACK SLEEVE OVER ANY COLOR EXCEPT GREEN
  - SIGNAL PAIR
 

POSITIVE	BLACK
NEGATIVE	WHITE
  - SINGLE TRIAD
 

POSITIVE	BLACK
NEGATIVE	WHITE
THIRD WIRE	RED
  - THERMOCPL
 

POSITIVE	PER ANSI MC96.1
NEGATIVE	PER ANSI MC96.1
  - 3) IDENTIFICATION OF CABLES SHALL INCLUDE CABLE NUMBER AND DESTINATION.
  - 4) SKID WIRING SHALL BE ARMORED BRAIDED CABLE PER MAYEKAWA REQUISITION
  - 5) DEVICES ARE EX(ia) RATED
  - 6) JUNCTION BOX IS EX(e) RATED AND MATERIAL IS SS 316
  - 7) MULTI CORE/PAIR CABLE GLANDS BY OTHERS.
  - 8) DUE TO SPACE LIMITATION, ALL CABLE ENTRIES ARE FROM BOTTOM
  - 9) SEPARATION PLATE BETWEEN ANALOG, DIGITAL & POWER CABLES IS REQUIRED.

KEY PLAN :

REV.	ISSUE DATE	DESCRIPTION	PREPARED	CHECKED	APPROVED	COMPANY
01	30.09.24	ISSUED FOR APPROVAL	R.G	M.O	A.M.	
00	07.09.24	ISSUED FOR APPROVAL	R.G	M.O	A.M.	

CLIENT:

CONSULTING ENGINEER

PROJECT:

DRAWING TITLE:

**Local Panel and Junction Box Wiring Diagrams**  
**JBD-A-RU0001A-03**

DRAWING NO.	REV.	SIZE	SCALE	SHEET
EI027-HSE-VD-IN-DIG-004	01	A3	N.T.S	6 of 18

TB1 JBD-D-RU0001A-02



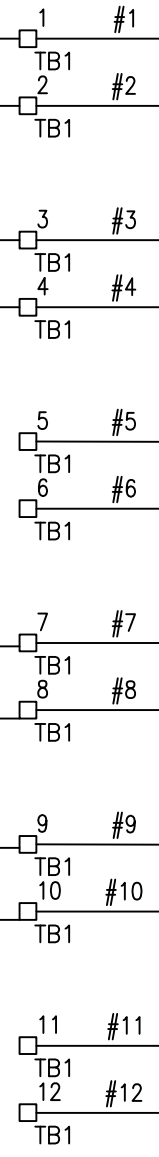
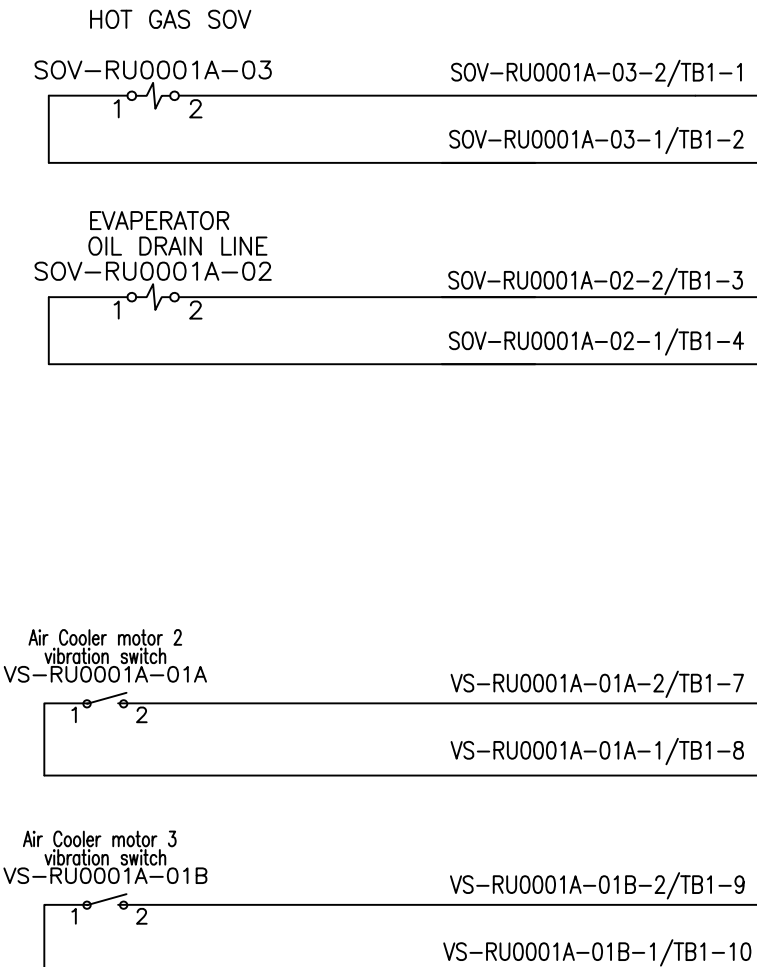
MULTICORE CABLE 1 X 12C 2.5 MM2 WIRES, NON-SHIELDED ARMORED BRAIDED CABLE (BY CLIENT)  
FROM JBD-D-RU0001A-02 TO UCP-RU0001  
INTERFACE CABLE GLAND BY CLIENT

**JUNCTION BOX SPECIFICATION:**

- EX PROTECTION : II 2G Ex e IIB T3
- INGRESS PROTECTION : IP65
- AMBIENT TEMP. CONDITION : -20 ... +55 °C
- ENCLOSURE MATERIAL : STAINLESS STEEL 316
- TB Type/Qty : UT2.5 BU (2.5mm2/GREY) / 16 pcs
- INTERNAL WIRING : 2.5mm2 Yellow/Green (PE)
- OPERATING VOLTAGE : <= 30V
- OPERATING CURRENT (TOTAL) : <= 6A
- EXTERNAL CABLE SIZE : 1.5mm2 ... 2.5mm2
- BREATHER/DRAIN : Stainless steel
- STOPPING PLUG : Nickel plated brass
- CABLE GLAND : Nickel plated brass
- EARTH BOLT : M8

REFERENCE DRAWING		DWG NO.		REV.		
LEGENDS :						
NOTES :						
1) INDIVIDUAL CONTROL WIRES SHALL BE IDENTIFIED BY TWO LABELS AT EACH END. THE FIRST LABEL (CLOSEST TO THE END OF THE WIRE) SHALL IDENTIFY THE NUMBER OF THE TERMINAL TO WHICH THE WIRE IS CONNECTED. THE OTHER LABEL SHALL IDENTIFY THE TERMINAL OF THE OPPOSITE END OF THE WIRE.						
2) AC SUPPLY	PHASE	BLACK				
	NEUTRAL	WHITE				
	GROUND	GREEN OR GREEN W/YELLOW TRACER				
DC SUPPLY	POSITIVE	RED OR RED SLEEVE OVER ANY COLOR EXCEPT GREEN				
	NEGATIVE	BLACK OR BLACK SLEEVE OVER ANY COLOR EXCEPT GREEN				
SIGNAL PAIR	POSITIVE	BLACK				
	NEGATIVE	WHITE				
SINGLE TRIAD	POSITIVE	BLACK				
	NEGATIVE	WHITE				
	THIRD WIRE	RED				
THERMOCP	POSITIVE	PER ANSI MC96.1				
	NEGATIVE	PER ANSI MC96.1				
3) IDENTIFICATION OF CABLES SHALL INCLUDE CABLE NUMBER AND DESTINATION.						
4) SKID WIRING SHALL BE ARMORED BRAIDED CABLE PER MAYEKAWA REQUISITION						
5) DEVICES ARE EX(d) RATED						
6) JUNCTION BOX IS EX(e) RATED AND MATERIAL IS SS 316						
7) MULTI CORE/PAIR CABLE GLANDS BY OTHERS.						
8) DUE TO SPACE LIMITATION, ALL CABLE ENTRIES ARE FROM BOTTOM						
9) SEPARATION PLATE BETWEEN ANALOG, DIGITAL & POWER CABLES IS REQUIRED.						
KEY PLAN :						
01	30.09.24	ISSUED FOR APPROVAL	R.G	M.O	A.M.	
00	07.09.24	ISSUED FOR APPROVAL	R.G	M.O	A.M.	
REV.	ISSUE DATE	DESCRIPTION	PREPARED	CHECKED	APPROVED	COMPANY
CLIENT:						
CONSULTING ENGINEER						
PROJECT:						
DRAWING TITLE:						
<b>Local Panel and Junction Box Wiring Diagrams</b>						
<b>JBD-D-RU0001A-02</b>						
DRAWING NO.		REV.	SIZE	SCALE	SHEET	
E1027-HSE-VD-IN-DIG-004		01	A3	N.T.S	7 of 18	

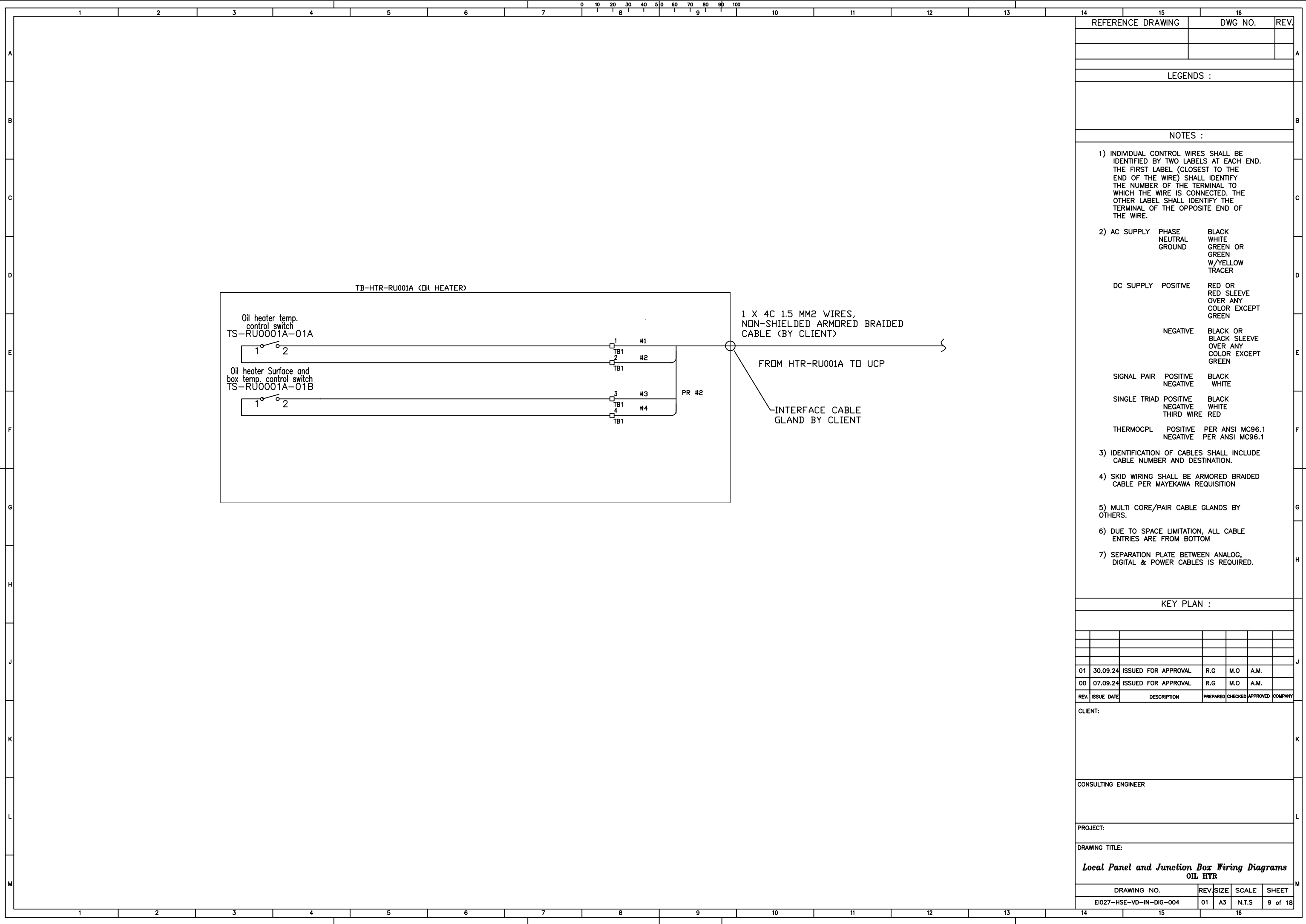
TB1 JBD-D-RU0001A-04



MULTICORE CABLE 1 X 12C 2.5 MM2  
 WIRES, NON-SHIELDED ARMORED  
 BRAIDED CABLE (BY CLIENT)  
 FROM JBD-D-RU0001A-04 TO UCP-RU0001  
 INTERFACE CABLE GLAND BY CLIENT

REFERENCE DRAWING		DWG NO.		REV.		
LEGENDS :						
NOTES :						
1) INDIVIDUAL CONTROL WIRES SHALL BE IDENTIFIED BY TWO LABELS AT EACH END. THE FIRST LABEL (CLOSEST TO THE END OF THE WIRE) SHALL IDENTIFY THE NUMBER OF THE TERMINAL TO WHICH THE WIRE IS CONNECTED. THE OTHER LABEL SHALL IDENTIFY THE TERMINAL OF THE OPPOSITE END OF THE WIRE.						
2) AC SUPPLY	PHASE	BLACK				
	NEUTRAL	WHITE				
	GROUND	GREEN OR GREEN W/YELLOW TRACER				
DC SUPPLY	POSITIVE	RED OR RED SLEEVE OVER ANY COLOR EXCEPT GREEN				
	NEGATIVE	BLACK OR BLACK SLEEVE OVER ANY COLOR EXCEPT GREEN				
SIGNAL PAIR	POSITIVE	BLACK				
	NEGATIVE	WHITE				
SINGLE TRIAD	POSITIVE	BLACK				
	NEGATIVE	WHITE				
	THIRD WIRE	RED				
THERMOCP	POSITIVE	PER ANSI MC96.1				
	NEGATIVE	PER ANSI MC96.1				
3) IDENTIFICATION OF CABLES SHALL INCLUDE CABLE NUMBER AND DESTINATION.						
4) SKID WIRING SHALL BE ARMORED BRAIDED CABLE PER MAYEKAWA REQUISITION						
5) DEVICES ARE EX(d) RATED						
6) JUNCTION BOX IS EX(e) RATED AND MATERIAL IS SS 316						
7) MULTI CORE/PAIR CABLE GLANDS BY OTHERS.						
8) DUE TO SPACE LIMITATION, ALL CABLE ENTRIES ARE FROM BOTTOM						
9) SEPARATION PLATE BETWEEN ANALOG, DIGITAL & POWER CABLES IS REQUIRED.						
KEY PLAN :						
01	30.09.24	ISSUED FOR APPROVAL	R.G	M.O	A.M.	
00	07.09.24	ISSUED FOR APPROVAL	R.G	M.O	A.M.	
REV.	ISSUE DATE	DESCRIPTION	PREPARED	CHECKED	APPROVED	COMPANY
CLIENT:						
CONSULTING ENGINEER						
PROJECT:						
DRAWING TITLE:						
<b>Local Panel and Junction Box Wiring Diagrams</b>						
<b>JBD-D-RU0001A-04</b>						
DRAWING NO.		REV.	SIZE	SCALE	SHEET	
E027-HSE-VD-IN-DIG-004		01	A3	N.T.S	8 of 18	

**JUNCTION BOX SPECIFICATION:**  
 EX PROTECTION : II 2G Ex e IIB T3  
 INGRESS PROTECTION : IP65  
 AMBIENT TEMP. CONDITION : -20 ... +55 °C  
 ENCLOSURE MATERIAL : STAINLESS STEEL 316  
 TB Type/Qty : UT2.5 BU (2.5mm2/GRAY) / 12 pcs  
 INTERNAL WIRING : 2.5mm2 Yellow/Green (PE)  
 OPERATING VOLTAGE : <= 30V  
 OPERATING CURRENT (TOTAL) : <= 6A  
 EXTERNAL CABLE SIZE : 1.5mm2 ... 2.5mm2  
 BREATHER/DRAIN : Stainless steel  
 STOPPING PLUG : Nickel plated brass  
 CABLE GLAND : Nickel plated brass  
 EARTH BOLT : M8



REFERENCE DRAWING	DWG NO.	REV.

LEGENDS :

- NOTES :
- INDIVIDUAL CONTROL WIRES SHALL BE IDENTIFIED BY TWO LABELS AT EACH END. THE FIRST LABEL (CLOSEST TO THE END OF THE WIRE) SHALL IDENTIFY THE NUMBER OF THE TERMINAL TO WHICH THE WIRE IS CONNECTED. THE OTHER LABEL SHALL IDENTIFY THE TERMINAL OF THE OPPOSITE END OF THE WIRE.
  - AC SUPPLY PHASE: BLACK  
NEUTRAL: WHITE  
GROUND: GREEN OR GREEN W/YELLOW TRACER
  - DC SUPPLY POSITIVE: RED OR RED SLEEVE OVER ANY COLOR EXCEPT GREEN  
NEGATIVE: BLACK OR BLACK SLEEVE OVER ANY COLOR EXCEPT GREEN
  - SIGNAL PAIR POSITIVE: BLACK  
NEGATIVE: WHITE
  - SINGLE TRIAD POSITIVE: BLACK  
NEGATIVE: WHITE  
THIRD WIRE: RED
  - THERMOPL POSITIVE: PER ANSI MC96.1  
NEGATIVE: PER ANSI MC96.1
  - IDENTIFICATION OF CABLES SHALL INCLUDE CABLE NUMBER AND DESTINATION.
  - SKID WIRING SHALL BE ARMORED BRAIDED CABLE PER MAYEKAWA REQUISITION
  - MULTI CORE/PAIR CABLE GLANDS BY OTHERS.
  - DUE TO SPACE LIMITATION, ALL CABLE ENTRIES ARE FROM BOTTOM
  - SEPARATION PLATE BETWEEN ANALOG, DIGITAL & POWER CABLES IS REQUIRED.

KEY PLAN :

01	30.09.24	ISSUED FOR APPROVAL	R.G	M.O	A.M.	
00	07.09.24	ISSUED FOR APPROVAL	R.G	M.O	A.M.	
REV.	ISSUE DATE	DESCRIPTION	PREPARED	CHECKED	APPROVED	COMPANY

CLIENT:

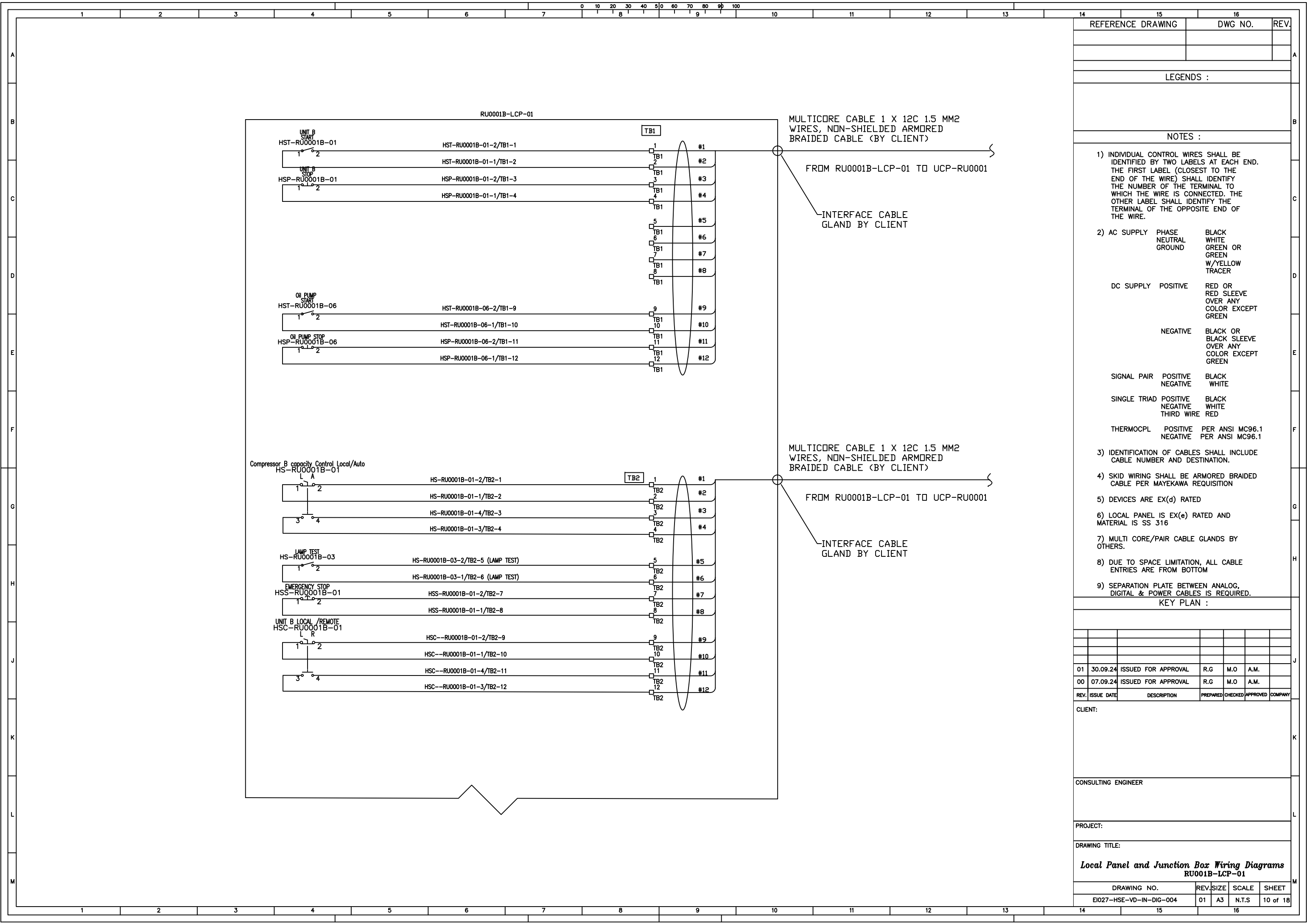
CONSULTING ENGINEER

PROJECT:

DRAWING TITLE:

**Local Panel and Junction Box Wiring Diagrams  
OIL HTR**

DRAWING NO.	REV.	SIZE	SCALE	SHEET
EI027-HSE-VD-IN-DIG-004	01	A3	N.T.S	9 of 18



REFERENCE DRAWING	DWG NO.	REV.

LEGENDS :

- NOTES :
- INDIVIDUAL CONTROL WIRES SHALL BE IDENTIFIED BY TWO LABELS AT EACH END. THE FIRST LABEL (CLOSEST TO THE END OF THE WIRE) SHALL IDENTIFY THE NUMBER OF THE TERMINAL TO WHICH THE WIRE IS CONNECTED. THE OTHER LABEL SHALL IDENTIFY THE TERMINAL OF THE OPPOSITE END OF THE WIRE.
  - AC SUPPLY PHASE NEUTRAL GROUND: BLACK WHITE GREEN OR GREEN W/YELLOW TRACER  
DC SUPPLY POSITIVE: RED OR RED SLEEVE OVER ANY COLOR EXCEPT GREEN  
NEGATIVE: BLACK OR BLACK SLEEVE OVER ANY COLOR EXCEPT GREEN  
SIGNAL PAIR POSITIVE NEGATIVE: BLACK WHITE  
SINGLE TRIAD POSITIVE NEGATIVE THIRD WIRE: BLACK WHITE RED  
THERMOPL POSITIVE NEGATIVE: PER ANSI MC96.1 PER ANSI MC96.1
  - IDENTIFICATION OF CABLES SHALL INCLUDE CABLE NUMBER AND DESTINATION.
  - SKID WIRING SHALL BE ARMORED BRAIDED CABLE PER MAYEKAWA REQUISITION
  - DEVICES ARE EX(d) RATED
  - LOCAL PANEL IS EX(e) RATED AND MATERIAL IS SS 316
  - MULTI CORE/PAIR CABLE GLANDS BY OTHERS.
  - DUE TO SPACE LIMITATION, ALL CABLE ENTRIES ARE FROM BOTTOM
  - SEPARATION PLATE BETWEEN ANALOG, DIGITAL & POWER CABLES IS REQUIRED.

KEY PLAN :

REV.	ISSUE DATE	DESCRIPTION	PREPARED	CHECKED	APPROVED	COMPANY
01	30.09.24	ISSUED FOR APPROVAL	R.G	M.O	A.M.	
00	07.09.24	ISSUED FOR APPROVAL	R.G	M.O	A.M.	

CLIENT:

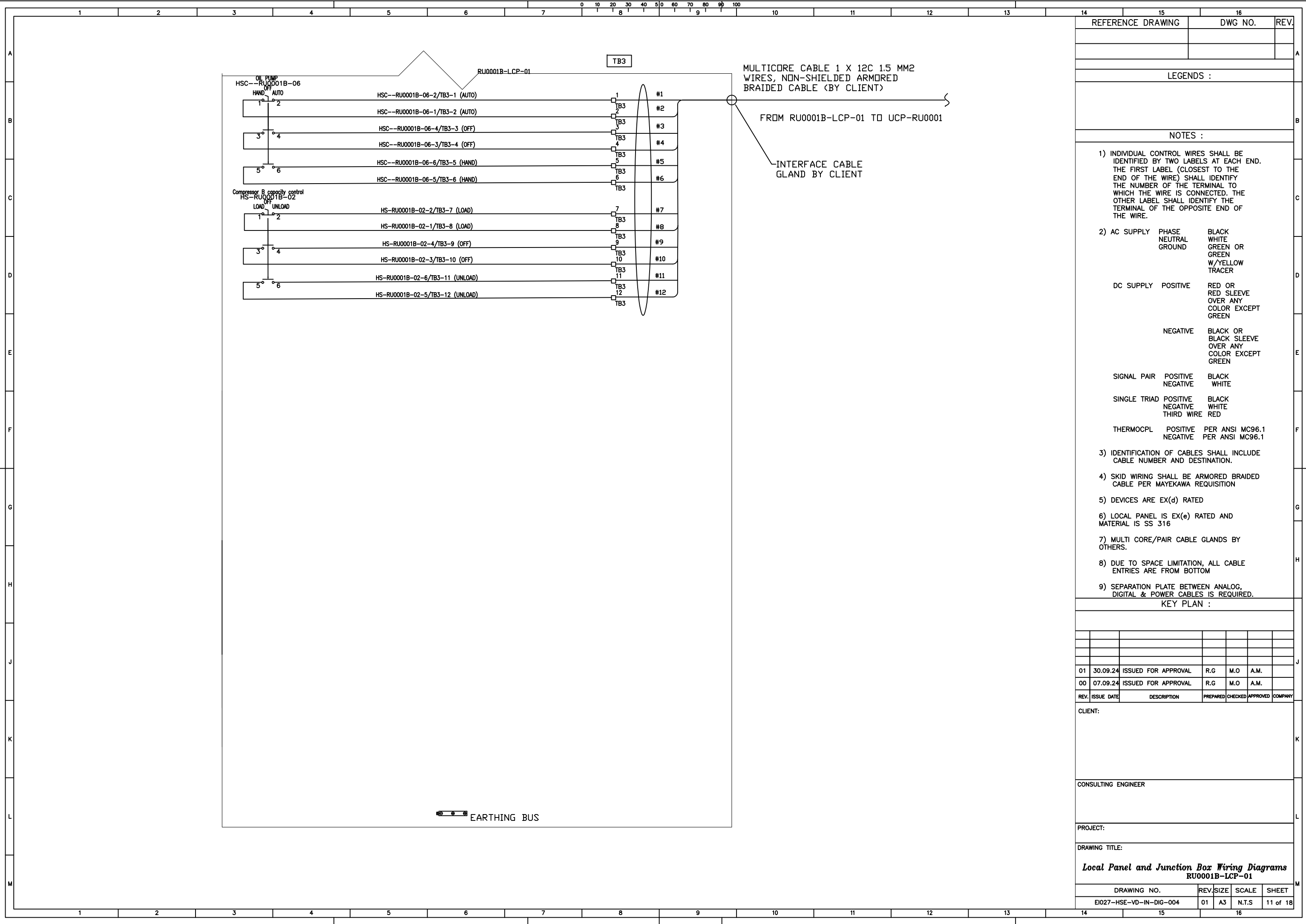
CONSULTING ENGINEER

PROJECT:

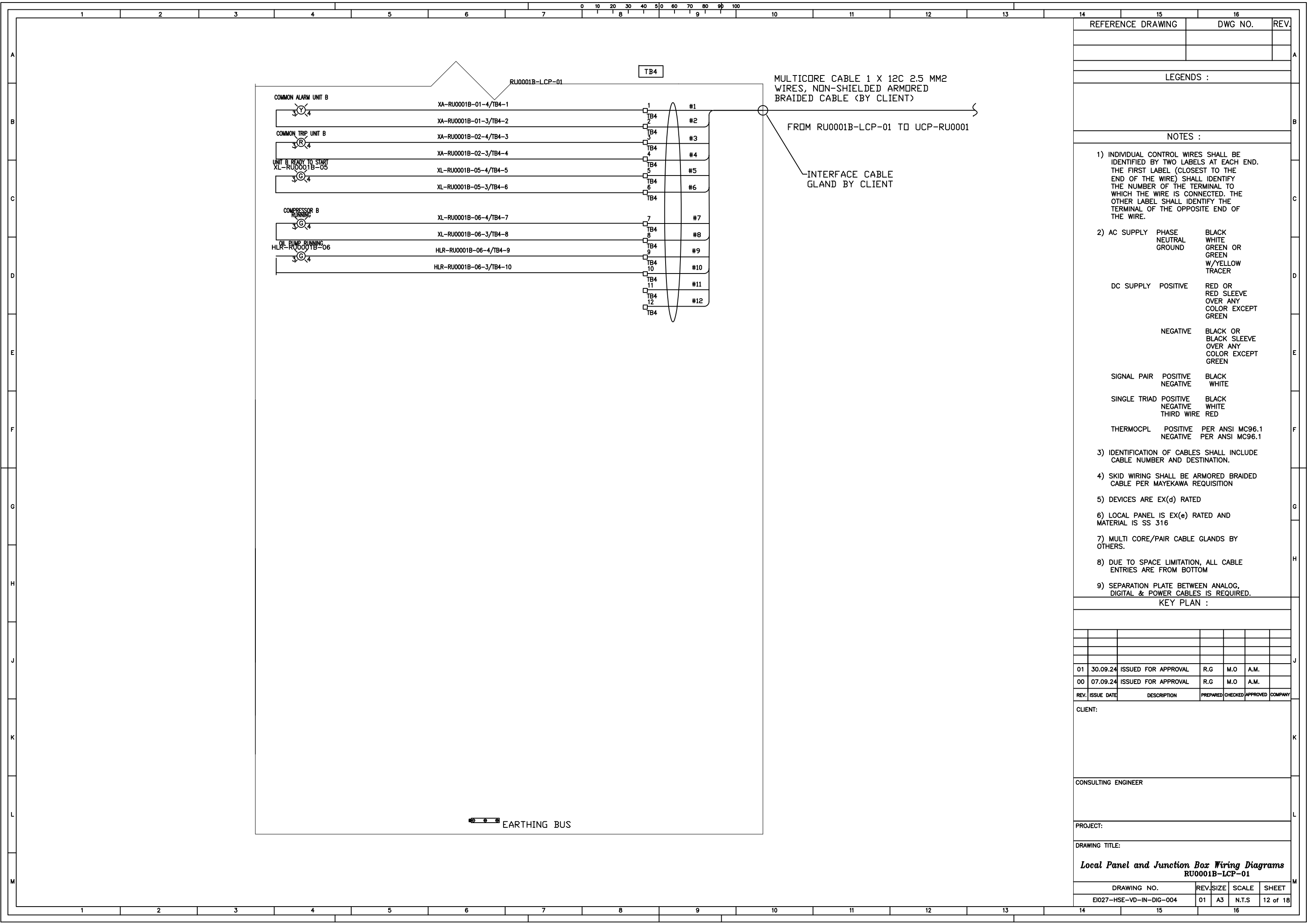
DRAWING TITLE:

**Local Panel and Junction Box Wiring Diagrams**  
**RU0001B-LCP-01**

DRAWING NO.	REV.	SIZE	SCALE	SHEET
EI027-HSE-VD-IN-DIG-004	01	A3	N.T.S	10 of 18



REFERENCE DRAWING		DWG NO.		REV.		
LEGENDS :						
NOTES :						
1) INDIVIDUAL CONTROL WIRES SHALL BE IDENTIFIED BY TWO LABELS AT EACH END. THE FIRST LABEL (CLOSEST TO THE END OF THE WIRE) SHALL IDENTIFY THE NUMBER OF THE TERMINAL TO WHICH THE WIRE IS CONNECTED. THE OTHER LABEL SHALL IDENTIFY THE TERMINAL OF THE OPPOSITE END OF THE WIRE.						
2) AC SUPPLY	PHASE	BLACK				
	NEUTRAL	WHITE				
	GROUND	GREEN OR GREEN OR W/YELLOW TRACER				
DC SUPPLY	POSITIVE	RED OR RED SLEEVE OVER ANY COLOR EXCEPT GREEN				
	NEGATIVE	BLACK OR BLACK SLEEVE OVER ANY COLOR EXCEPT GREEN				
SIGNAL PAIR	POSITIVE	BLACK				
	NEGATIVE	WHITE				
SINGLE TRIAD	POSITIVE	BLACK				
	NEGATIVE	WHITE				
	THIRD WIRE	RED				
THERMOCP	POSITIVE	PER ANSI MC96.1				
	NEGATIVE	PER ANSI MC96.1				
3) IDENTIFICATION OF CABLES SHALL INCLUDE CABLE NUMBER AND DESTINATION.						
4) SKID WIRING SHALL BE ARMORED BRAIDED CABLE PER MAYEKAWA REQUISITION						
5) DEVICES ARE EX(d) RATED						
6) LOCAL PANEL IS EX(e) RATED AND MATERIAL IS SS 316						
7) MULTI CORE/PAIR CABLE GLANDS BY OTHERS.						
8) DUE TO SPACE LIMITATION, ALL CABLE ENTRIES ARE FROM BOTTOM						
9) SEPARATION PLATE BETWEEN ANALOG, DIGITAL & POWER CABLES IS REQUIRED.						
KEY PLAN :						
01	30.09.24	ISSUED FOR APPROVAL	R.G	M.O	A.M.	
00	07.09.24	ISSUED FOR APPROVAL	R.G	M.O	A.M.	
REV.	ISSUE DATE	DESCRIPTION	PREPARED	CHECKED	APPROVED	COMPANY
CLIENT:						
CONSULTING ENGINEER						
PROJECT:						
DRAWING TITLE:						
<b>Local Panel and Junction Box Wiring Diagrams</b>						
<b>RU0001B-LCP-01</b>						
DRAWING NO.		REV.	SIZE	SCALE	SHEET	
E027-HSE-VD-IN-DIG-004		01	A3	N.T.S	11 of 18	



REFERENCE DRAWING	DWG NO.	REV.

LEGENDS :

- NOTES :
- INDIVIDUAL CONTROL WIRES SHALL BE IDENTIFIED BY TWO LABELS AT EACH END. THE FIRST LABEL (CLOSEST TO THE END OF THE WIRE) SHALL IDENTIFY THE NUMBER OF THE TERMINAL TO WHICH THE WIRE IS CONNECTED. THE OTHER LABEL SHALL IDENTIFY THE TERMINAL OF THE OPPOSITE END OF THE WIRE.
  - AC SUPPLY
 

PHASE	BLACK
NEUTRAL	WHITE
GROUND	GREEN OR GREEN OR W/YELLOW TRACER

  
 DC SUPPLY
 

POSITIVE	RED OR RED SLEEVE OVER ANY COLOR EXCEPT GREEN
NEGATIVE	BLACK OR BLACK SLEEVE OVER ANY COLOR EXCEPT GREEN

  
 SIGNAL PAIR
 

POSITIVE	BLACK
NEGATIVE	WHITE

  
 SINGLE TRIAD
 

POSITIVE	BLACK
NEGATIVE	WHITE
THIRD WIRE	RED

  
 THERMOPL
 

POSITIVE	PER ANSI MC96.1
NEGATIVE	PER ANSI MC96.1
  - IDENTIFICATION OF CABLES SHALL INCLUDE CABLE NUMBER AND DESTINATION.
  - SKID WIRING SHALL BE ARMORED BRAIDED CABLE PER MAYEKAWA REQUISITION
  - DEVICES ARE EX(d) RATED
  - LOCAL PANEL IS EX(e) RATED AND MATERIAL IS SS 316
  - MULTI CORE/PAIR CABLE GLANDS BY OTHERS.
  - DUE TO SPACE LIMITATION, ALL CABLE ENTRIES ARE FROM BOTTOM
  - SEPARATION PLATE BETWEEN ANALOG, DIGITAL & POWER CABLES IS REQUIRED.

KEY PLAN :

01	30.09.24	ISSUED FOR APPROVAL	R.G	M.O	A.M.
00	07.09.24	ISSUED FOR APPROVAL	R.G	M.O	A.M.

CLIENT:

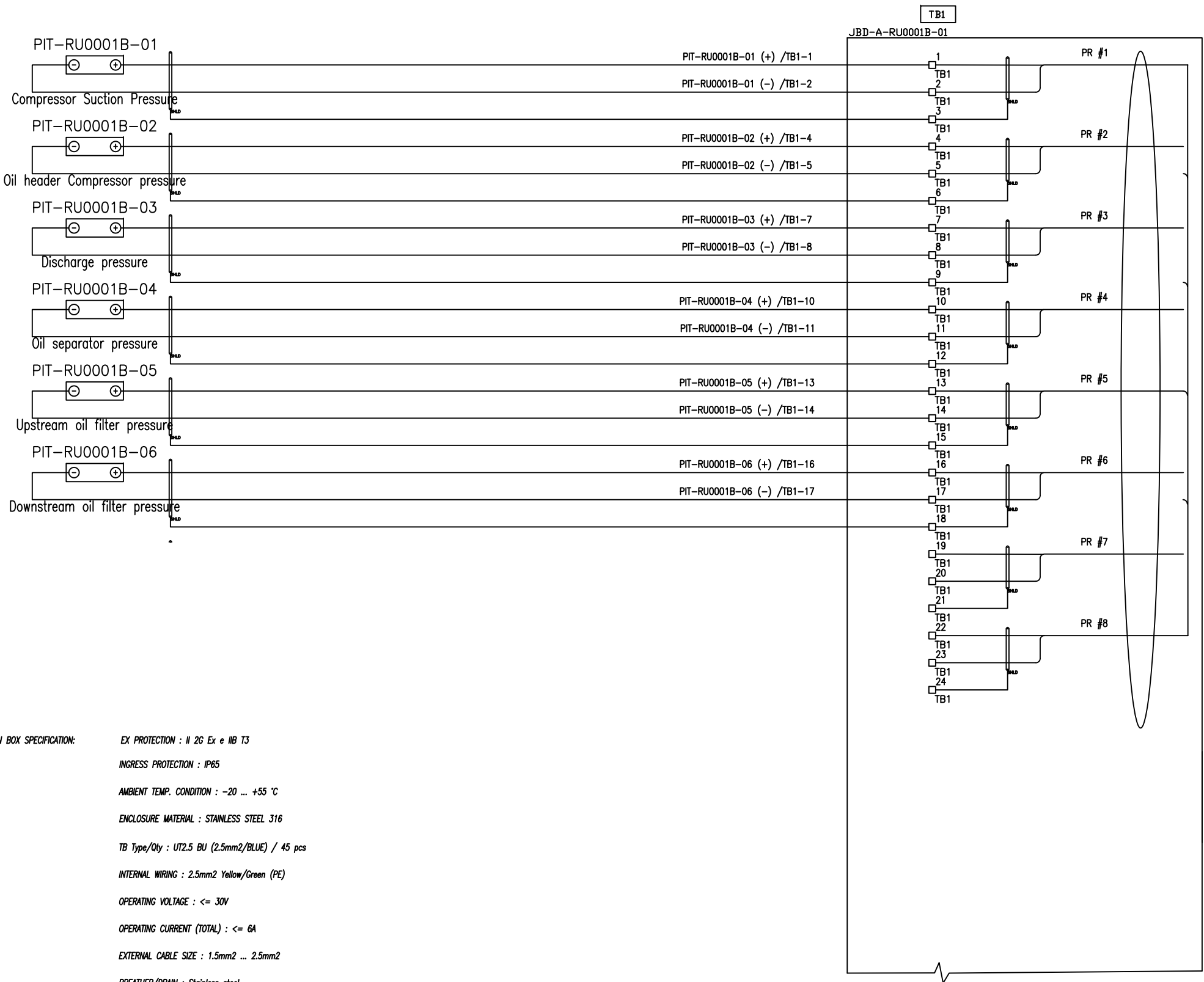
CONSULTING ENGINEER

PROJECT:

DRAWING TITLE:

**Local Panel and Junction Box Wiring Diagrams  
RU0001B-LCP-01**

DRAWING NO.	REV.	SIZE	SCALE	SHEET
EI027-HSE-VD-IN-DIG-004	01	A3	N.T.S	12 of 18



**JUNCTION BOX SPECIFICATION:**

- EX PROTECTION : II 2G Ex e IIB T3
- INGRESS PROTECTION : IP65
- AMBIENT TEMP. CONDITION : -20 ... +55 °C
- ENCLOSURE MATERIAL : STAINLESS STEEL 316
- TB Type/Qty : UT2.5 BU (2.5mm2/BLUE) / 45 pcs
- INTERNAL WIRING : 2.5mm2 Yellow/Green (PE)
- OPERATING VOLTAGE : <= 30V
- OPERATING CURRENT (TOTAL) : <= 6A
- EXTERNAL CABLE SIZE : 1.5mm2 ... 2.5mm2
- BREATHER/DRAIN : Stainless steel
- STOPPING PLUG : Nickel plated brass
- CABLE GLAND : Nickel plated brass
- EARTH BOLT : M8

REFERENCE DRAWING	DWG NO.	REV.

**LEGENDS :**

**NOTES :**

- 1) INDIVIDUAL CONTROL WIRES SHALL BE IDENTIFIED BY TWO LABELS AT EACH END. THE FIRST LABEL (CLOSEST TO THE END OF THE WIRE) SHALL IDENTIFY THE NUMBER OF THE TERMINAL TO WHICH THE WIRE IS CONNECTED. THE OTHER LABEL SHALL IDENTIFY THE TERMINAL OF THE OPPOSITE END OF THE WIRE.
- 2) AC SUPPLY PHASE NEUTRAL GROUND BLACK WHITE GREEN OR GREEN W/YELLOW TRACER
- DC SUPPLY POSITIVE RED OR RED SLEEVE OVER ANY COLOR EXCEPT GREEN
- NEGATIVE BLACK OR BLACK SLEEVE OVER ANY COLOR EXCEPT GREEN
- SIGNAL PAIR POSITIVE BLACK NEGATIVE WHITE
- SINGLE TRIAD POSITIVE BLACK NEGATIVE WHITE THIRD WIRE RED
- THERMOCP L POSITIVE PER ANSI MC96.1 NEGATIVE PER ANSI MC96.1
- 3) IDENTIFICATION OF CABLES SHALL INCLUDE CABLE NUMBER AND DESTINATION.
- 4) SKID WIRING SHALL BE ARMORED BRAIDED CABLE PER MAYEKAWA REQUISITION
- 5) DEVICES ARE EX(i)a RATED
- 6) JUNCTION BOX IS EX(e) RATED AND MATERIAL IS SS 316
- 7) MULTI CORE/PAIR CABLE GLANDS BY OTHERS.
- 8) DUE TO SPACE LIMITATION, ALL CABLE ENTRIES ARE FROM BOTTOM
- 9) SEPARATION PLATE BETWEEN ANALOG, DIGITAL & POWER CABLES IS REQUIRED.

**KEY PLAN :**

01	30.09.24	ISSUED FOR APPROVAL	R.G	M.O	A.M.	
00	07.09.24	ISSUED FOR APPROVAL	R.G	M.O	A.M.	
REV.	ISSUE DATE	DESCRIPTION	PREPARED	CHECKED	APPROVED	COMPANY

CLIENT:

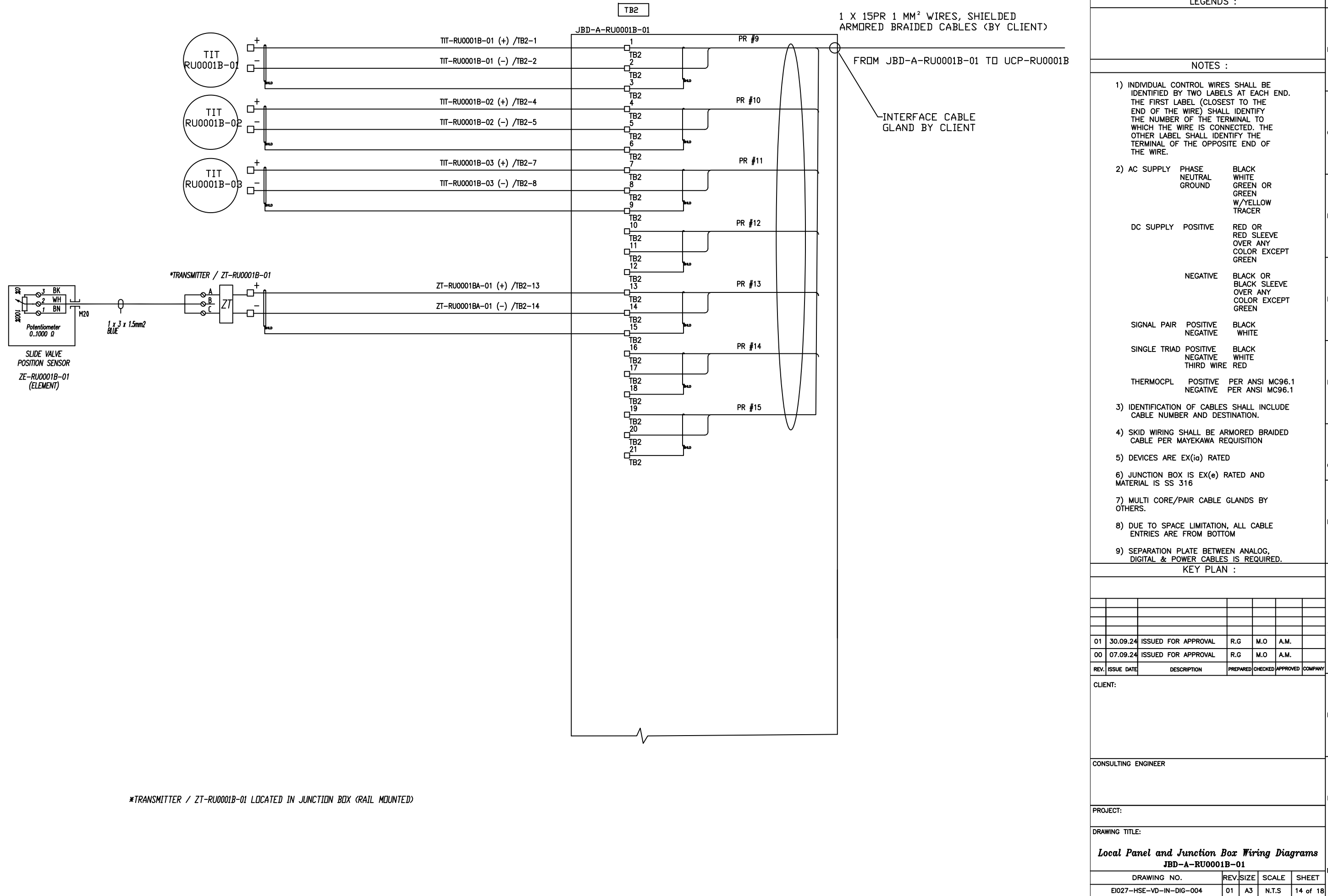
CONSULTING ENGINEER

PROJECT:

DRAWING TITLE:

**Local Panel and Junction Box Wiring Diagrams**  
**JBD-A-RU0001B-01**

DRAWING NO.	REV.	SIZE	SCALE	SHEET
EI027-HSE-VD-IN-DIG-004	01	A3	N.T.S	13 of 18



REFERENCE DRAWING	DWG NO.	REV.

LEGENDS :

NOTES :

- 1) INDIVIDUAL CONTROL WIRES SHALL BE IDENTIFIED BY TWO LABELS AT EACH END. THE FIRST LABEL (CLOSEST TO THE END OF THE WIRE) SHALL IDENTIFY THE NUMBER OF THE TERMINAL TO WHICH THE WIRE IS CONNECTED. THE OTHER LABEL SHALL IDENTIFY THE TERMINAL OF THE OPPOSITE END OF THE WIRE.
- 2) AC SUPPLY PHASE NEUTRAL GROUND  
 DC SUPPLY POSITIVE  
 DC SUPPLY NEGATIVE  
 SIGNAL PAIR POSITIVE NEGATIVE  
 SINGLE TRIAD POSITIVE NEGATIVE THIRD WIRE  
 THERMOCP L POSITIVE NEGATIVE
- 3) IDENTIFICATION OF CABLES SHALL INCLUDE CABLE NUMBER AND DESTINATION.
- 4) SKID WIRING SHALL BE ARMORED BRAIDED CABLE PER MAYEKAWA REQUISITION
- 5) DEVICES ARE EX(ia) RATED
- 6) JUNCTION BOX IS EX(e) RATED AND MATERIAL IS SS 316
- 7) MULTI CORE/PAIR CABLE GLANDS BY OTHERS.
- 8) DUE TO SPACE LIMITATION, ALL CABLE ENTRIES ARE FROM BOTTOM
- 9) SEPARATION PLATE BETWEEN ANALOG, DIGITAL & POWER CABLES IS REQUIRED.

KEY PLAN :


01	30.09.24	ISSUED FOR APPROVAL	R.G	M.O	A.M.
00	07.09.24	ISSUED FOR APPROVAL	R.G	M.O	A.M.

CLIENT:

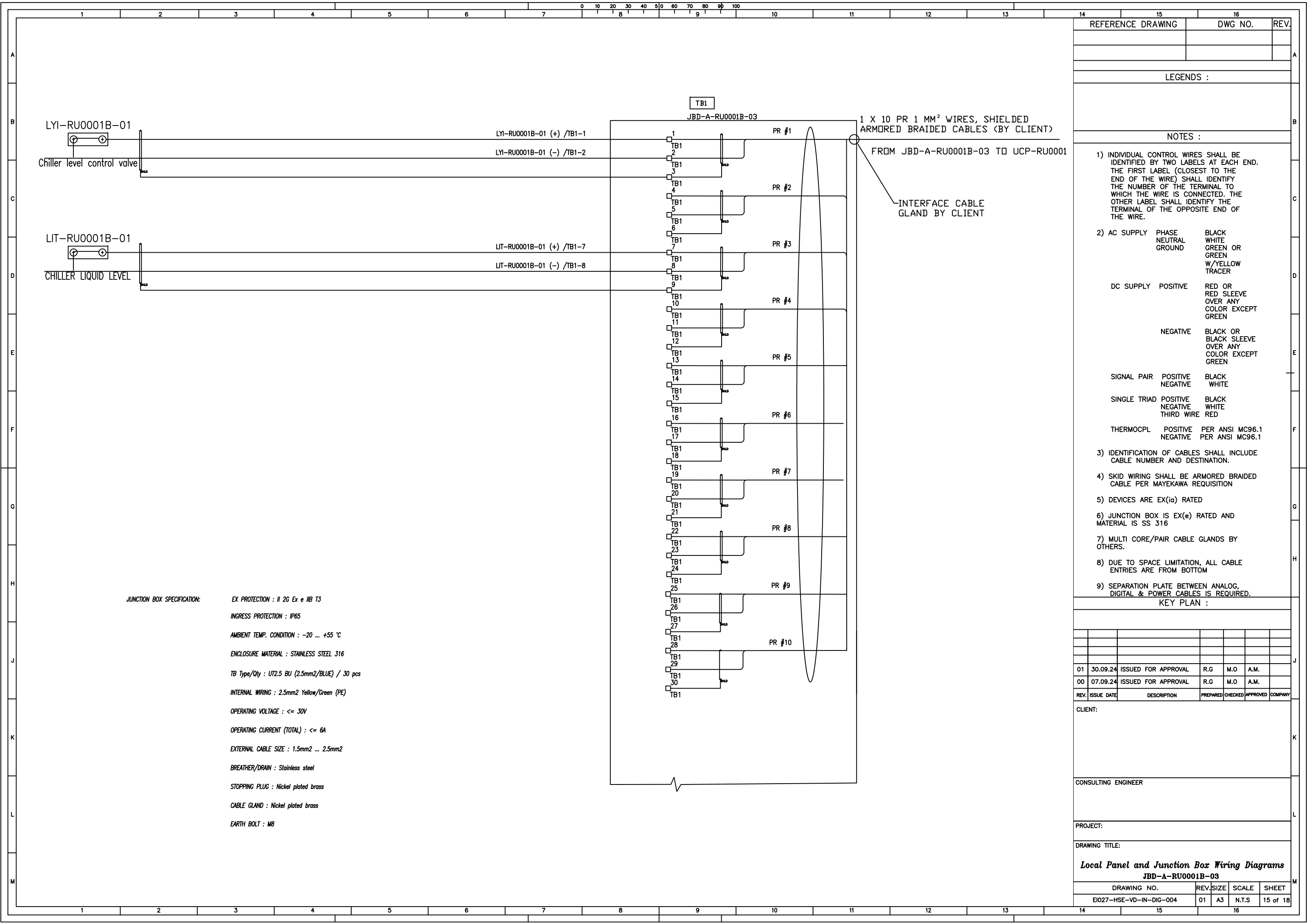
CONSULTING ENGINEER

PROJECT:

DRAWING TITLE:

**Local Panel and Junction Box Wiring Diagrams**  
**JBD-A-RU0001B-01**

DRAWING NO.	REV.	SIZE	SCALE	SHEET
EI027-HSE-YD-IN-DIG-004	01	A3	N.T.S	14 of 18



**JUNCTION BOX SPECIFICATION:**

- EX PROTECTION : II 2G Ex e IIB T3
- INGRESS PROTECTION : IP65
- AMBIENT TEMP. CONDITION : -20 ... +55 °C
- ENCLOSURE MATERIAL : STAINLESS STEEL 316
- TB Type/Qty : UT2.5 BU (2.5mm2/BLUE) / 30 pcs
- INTERNAL WIRING : 2.5mm2 Yellow/Green (PE)
- OPERATING VOLTAGE : <= 30V
- OPERATING CURRENT (TOTAL) : <= 6A
- EXTERNAL CABLE SIZE : 1.5mm2 ... 2.5mm2
- BREATHER/DRAIN : Stainless steel
- STOPPING PLUG : Nickel plated brass
- CABLE GLAND : Nickel plated brass
- EARTH BOLT : M8

REFERENCE DRAWING	DWG NO.	REV.

LEGENDS :

- NOTES :
- 1) INDIVIDUAL CONTROL WIRES SHALL BE IDENTIFIED BY TWO LABELS AT EACH END. THE FIRST LABEL (CLOSEST TO THE END OF THE WIRE) SHALL IDENTIFY THE NUMBER OF THE TERMINAL TO WHICH THE WIRE IS CONNECTED. THE OTHER LABEL SHALL IDENTIFY THE TERMINAL OF THE OPPOSITE END OF THE WIRE.
  - 2) AC SUPPLY PHASE: BLACK, NEUTRAL: WHITE, GROUND: GREEN OR GREEN W/YELLOW TRACER
  - DC SUPPLY POSITIVE: RED OR RED SLEEVE OVER ANY COLOR EXCEPT GREEN
  - NEGATIVE: BLACK OR BLACK SLEEVE OVER ANY COLOR EXCEPT GREEN
  - SIGNAL PAIR POSITIVE: BLACK, NEGATIVE: WHITE
  - SINGLE TRIAD POSITIVE: BLACK, NEGATIVE: WHITE, THIRD WIRE: RED
  - THERMOCP L POSITIVE: PER ANSI MC96.1, NEGATIVE: PER ANSI MC96.1
  - 3) IDENTIFICATION OF CABLES SHALL INCLUDE CABLE NUMBER AND DESTINATION.
  - 4) SKID WIRING SHALL BE ARMORED BRAIDED CABLE PER MAYEKAWA REQUISITION
  - 5) DEVICES ARE EX(ia) RATED
  - 6) JUNCTION BOX IS EX(e) RATED AND MATERIAL IS SS 316
  - 7) MULTI CORE/PAIR CABLE GLANDS BY OTHERS.
  - 8) DUE TO SPACE LIMITATION, ALL CABLE ENTRIES ARE FROM BOTTOM
  - 9) SEPARATION PLATE BETWEEN ANALOG, DIGITAL & POWER CABLES IS REQUIRED.

KEY PLAN :

REV.	ISSUE DATE	DESCRIPTION	PREPARED	CHECKED	APPROVED	COMPANY
01	30.09.24	ISSUED FOR APPROVAL	R.G	M.O	A.M.	
00	07.09.24	ISSUED FOR APPROVAL	R.G	M.O	A.M.	

CLIENT:

CONSULTING ENGINEER

PROJECT:

DRAWING TITLE:

**Local Panel and Junction Box Wiring Diagrams**  
**JBD-A-RU0001B-03**

DRAWING NO.	REV.	SIZE	SCALE	SHEET
EI027-HSE-VD-IN-DIG-004	01	A3	N.T.S	15 of 18

TB1 JBD-D-RU0001B-02

MULTICORE CABLE 1 X 12C 2.5 MM2  
WIRES, NON-SHIELDED ARMORED  
BRAIDED CABLE (BY CLIENT)

FROM JBD-D-RU0001B-02 TO UCP-RU0001

INTERFACE CABLE  
GLAND BY CLIENT

SLIDE VALVE  
UNLOAD RETURN  
SOV-RU0001B-01E SOV-RU0001B-01E-2/TB1-1

SOV-RU0001B-01E-1/TB1-2

SLIDE VALVE  
LOAD SUPPLY  
SOV-RU0001B-01C SOV-RU0001B-01C-2/TB1-3

SOV-RU0001B-01C-1/TB1-4

SLIDE VALVE  
UNLOAD SUPPLY  
SOV-RU0001B-01A SOV-RU0001B-01A-1/TB1-5

SOV-RU0001B-01A-2/TB1-6

SLIDE VALVE  
LOAD RETURN  
SOV-RU0001B-01D SOV-RU0001B-01D-2/TB1-7

SOV-RU0001B-01D-1/TB1-8

OIL SEPARATOR LEVEL SWITCH

LS-RU0001B-01 LS-RU0001B-01-5/TB1-9

LS-RU0001B-01-4/TB1-10

+24 VDC LS-RU0001B-01-1/TB1-11

0 VDC LS-RU0001B-01-2/TB1-12

**JUNCTION BOX SPECIFICATION:**

- EX PROTECTION : II 2G Ex e IIB T3
- INGRESS PROTECTION : IP65
- AMBIENT TEMP. CONDITION : -20 ... +55 °C
- ENCLOSURE MATERIAL : STAINLESS STEEL 316
- TB Type/Qty : UT2.5 BU (2.5mm2/GREY) / 16 pcs
- INTERNAL WIRING : 2.5mm2 Yellow/Green (PE)
- OPERATING VOLTAGE : <= 30V
- OPERATING CURRENT (TOTAL) : <= 6A
- EXTERNAL CABLE SIZE : 1.5mm2 ... 2.5mm2
- BREATHER/DRAIN : Stainless steel
- STOPPING PLUG : Nickel plated brass
- CABLE GLAND : Nickel plated brass
- EARTH BOLT : M8

1 #1

2 #2

3 #3

4 #4

5 #5

6 #6

7 #7

8 #8

9 #9

10 #10

11 #11

12 #12

13

TB1

14

TB1

15

TB1

16

TB1

REFERENCE DRAWING	DWG NO.	REV.

LEGENDS :

NOTES :

- 1) INDIVIDUAL CONTROL WIRES SHALL BE IDENTIFIED BY TWO LABELS AT EACH END. THE FIRST LABEL (CLOSEST TO THE END OF THE WIRE) SHALL IDENTIFY THE NUMBER OF THE TERMINAL TO WHICH THE WIRE IS CONNECTED. THE OTHER LABEL SHALL IDENTIFY THE TERMINAL OF THE OPPOSITE END OF THE WIRE.
- 2) AC SUPPLY PHASE NEUTRAL GROUND BLACK WHITE GREEN OR GREEN W/YELLOW TRACER
- DC SUPPLY POSITIVE RED OR RED SLEEVE OVER ANY COLOR EXCEPT GREEN
- NEGATIVE BLACK OR BLACK SLEEVE OVER ANY COLOR EXCEPT GREEN
- SIGNAL PAIR POSITIVE BLACK WHITE
- NEGATIVE WHITE
- SINGLE TRIAD POSITIVE BLACK
- NEGATIVE WHITE
- THIRD WIRE RED
- THERMOCP L POSITIVE PER ANSI MC96.1
- NEGATIVE PER ANSI MC96.1
- 3) IDENTIFICATION OF CABLES SHALL INCLUDE CABLE NUMBER AND DESTINATION.
- 4) SKID WIRING SHALL BE ARMORED BRAIDED CABLE PER MAYEKAWA REQUISITION
- 5) DEVICES ARE EX(d) RATED
- 6) JUNCTION BOX IS EX(e) RATED AND MATERIAL IS SS 316
- 7) MULTI CORE/PAIR CABLE GLANDS BY OTHERS.
- 8) DUE TO SPACE LIMITATION, ALL CABLE ENTRIES ARE FROM BOTTOM
- 9) SEPARATION PLATE BETWEEN ANALOG, DIGITAL & POWER CABLES IS REQUIRED.

KEY PLAN :

REV.	ISSUE DATE	DESCRIPTION	PREPARED	CHECKED	APPROVED	COMPANY
01	30.09.24	ISSUED FOR APPROVAL	R.G	M.O	A.M.	
00	07.09.24	ISSUED FOR APPROVAL	R.G	M.O	A.M.	

CLIENT:

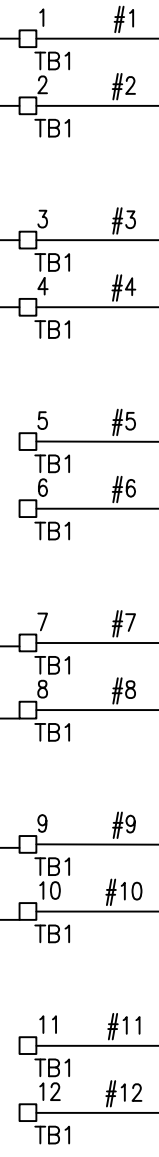
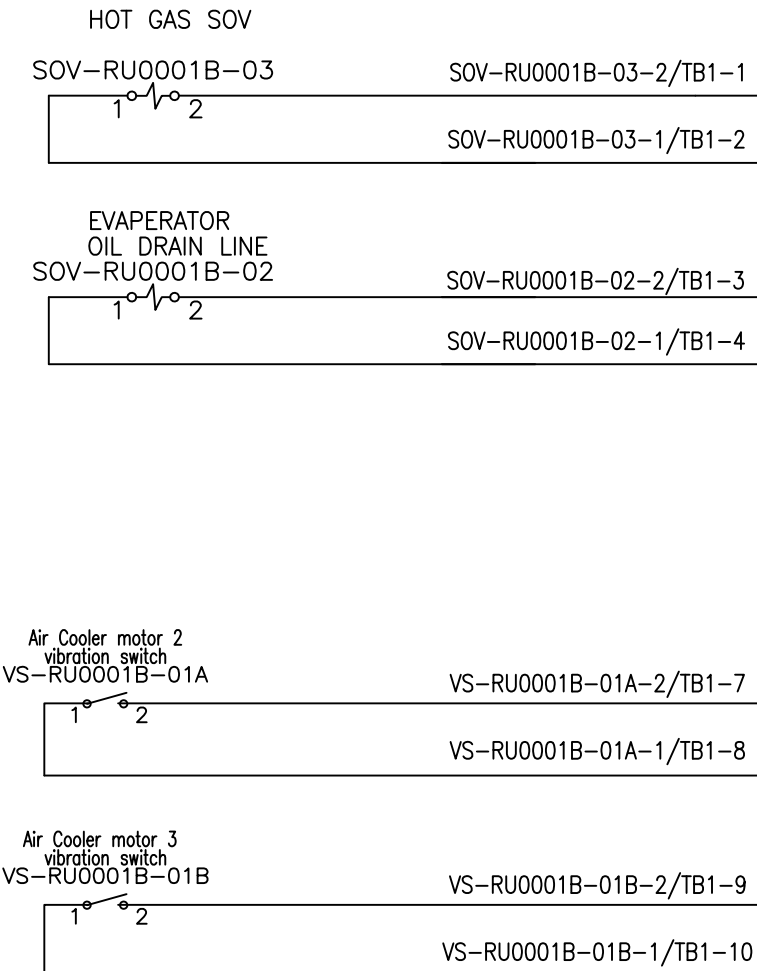
CONSULTING ENGINEER

PROJECT:

DRAWING TITLE:  
**Local Panel and Junction Box Wiring Diagrams**  
**JBD-D-RU0001B-02**

DRAWING NO.	REV.	SIZE	SCALE	SHEET
EI027-HSE-VD-IN-DIG-004	01	A3	N.T.S	16 of 18

TB1 JBD-D-RU0001B-04



MULTICORE CABLE 1 X 12C 2.5 MM2 WIRES, NON-SHIELDED ARMORED BRAIDED CABLE (BY CLIENT)

FROM JBD-D-RU0001B-04 TO UCP-RU0001

INTERFACE CABLE GLAND BY CLIENT

REFERENCE DRAWING		DWG NO.		REV.		
LEGENDS :						
NOTES :						
<p>1) INDIVIDUAL CONTROL WIRES SHALL BE IDENTIFIED BY TWO LABELS AT EACH END. THE FIRST LABEL (CLOSEST TO THE END OF THE WIRE) SHALL IDENTIFY THE NUMBER OF THE TERMINAL TO WHICH THE WIRE IS CONNECTED. THE OTHER LABEL SHALL IDENTIFY THE TERMINAL OF THE OPPOSITE END OF THE WIRE.</p> <p>2) AC SUPPLY PHASE NEUTRAL GROUND BLACK WHITE GREEN OR GREEN W/YELLOW TRACER</p> <p>DC SUPPLY POSITIVE RED OR RED SLEEVE OVER ANY COLOR EXCEPT GREEN</p> <p>NEGATIVE BLACK OR BLACK SLEEVE OVER ANY COLOR EXCEPT GREEN</p> <p>SIGNAL PAIR POSITIVE BLACK NEGATIVE WHITE</p> <p>SINGLE TRIAD POSITIVE BLACK NEGATIVE WHITE THIRD WIRE RED</p> <p>THERMOCPL POSITIVE PER ANSI MC96.1 NEGATIVE PER ANSI MC96.1</p> <p>3) IDENTIFICATION OF CABLES SHALL INCLUDE CABLE NUMBER AND DESTINATION.</p> <p>4) SKID WIRING SHALL BE ARMORED BRAIDED CABLE PER MAYEKAWA REQUISITION</p> <p>5) DEVICES ARE EX(d) RATED</p> <p>6) JUNCTION BOX IS EX(e) RATED AND MATERIAL IS SS 316</p> <p>7) MULTI CORE/PAIR CABLE GLANDS BY OTHERS.</p> <p>8) DUE TO SPACE LIMITATION, ALL CABLE ENTRIES ARE FROM BOTTOM</p> <p>9) SEPARATION PLATE BETWEEN ANALOG, DIGITAL &amp; POWER CABLES IS REQUIRED.</p>						
KEY PLAN :						
01	30.09.24	ISSUED FOR APPROVAL	R.G	M.O	A.M.	
00	07.09.24	ISSUED FOR APPROVAL	R.G	M.O	A.M.	
REV.	ISSUE DATE	DESCRIPTION	PREPARED	CHECKED	APPROVED	COMPANY
CLIENT:						
CONSULTING ENGINEER						
PROJECT:						
DRAWING TITLE:						
<b>Local Panel and Junction Box Wiring Diagrams</b>						
<b>JBD-D-RU0001B-04</b>						
DRAWING NO.		REV.	SIZE	SCALE	SHEET	
E1027-HSE-VD-IN-DIG-004		01	A3	N.T.S	17 of 18	

**JUNCTION BOX SPECIFICATION:**

EX PROTECTION : II 2G Ex e IIB T3

INGRESS PROTECTION : IP65

AMBIENT TEMP. CONDITION : -20 ... +55 °C

ENCLOSURE MATERIAL : STAINLESS STEEL 316

TB Type/Qty : UT2.5 BU (2.5mm2/GRAY) / 12 pcs

INTERNAL WIRING : 2.5mm2 Yellow/Green (PE)

OPERATING VOLTAGE : <= 30V

OPERATING CURRENT (TOTAL) : <= 6A

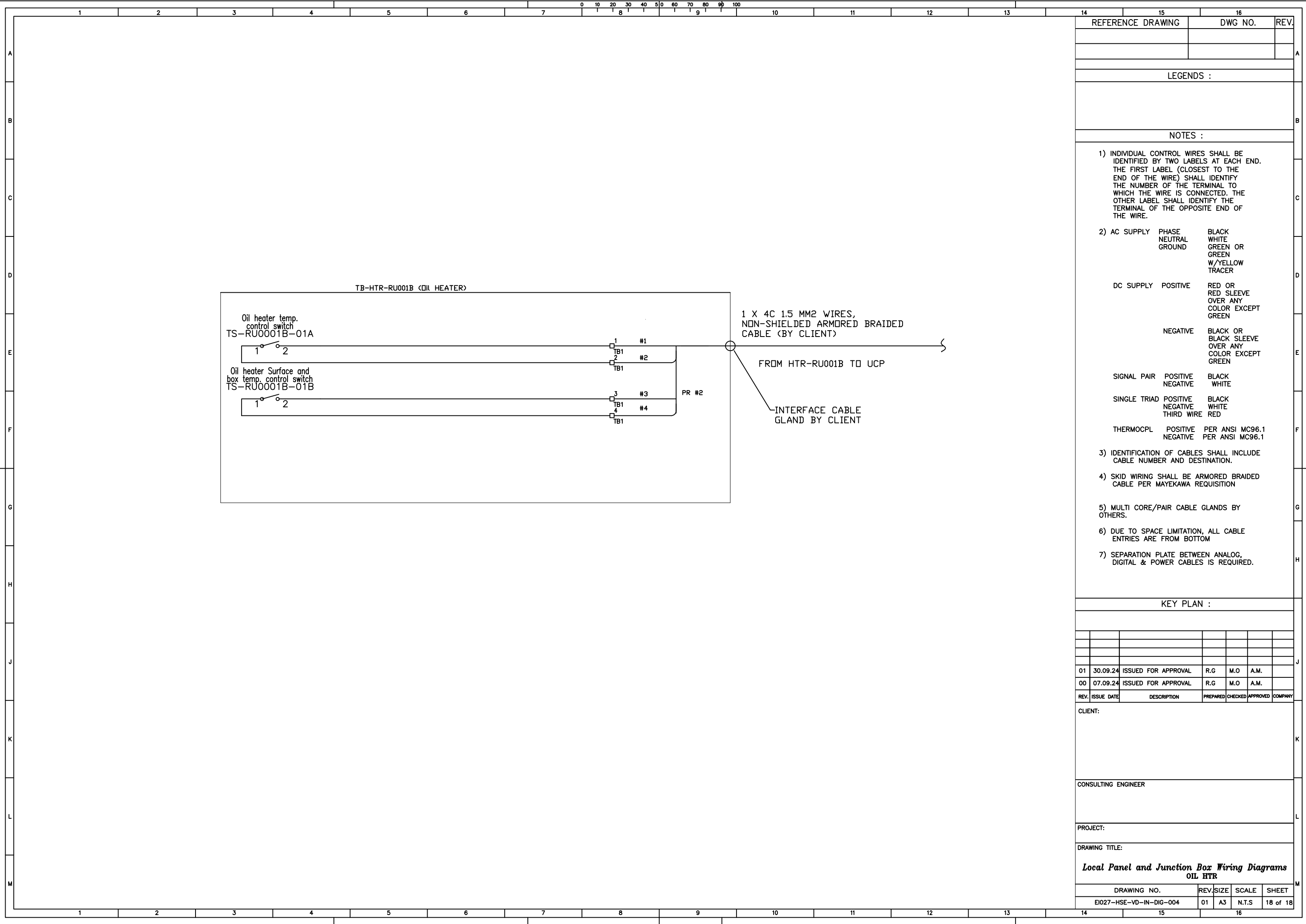
EXTERNAL CABLE SIZE : 1.5mm2 ... 2.5mm2

BREATHER/DRAIN : Stainless steel

STOPPING PLUG : Nickel plated brass

CABLE GLAND : Nickel plated brass

EARTH BOLT : M8



15	16	REV.
REFERENCE DRAWING	DWG NO.	
LEGENDS :		
NOTES :		
<p>1) INDIVIDUAL CONTROL WIRES SHALL BE IDENTIFIED BY TWO LABELS AT EACH END. THE FIRST LABEL (CLOSEST TO THE END OF THE WIRE) SHALL IDENTIFY THE NUMBER OF THE TERMINAL TO WHICH THE WIRE IS CONNECTED. THE OTHER LABEL SHALL IDENTIFY THE TERMINAL OF THE OPPOSITE END OF THE WIRE.</p> <p>2) AC SUPPLY PHASE BLACK NEUTRAL WHITE GROUND GREEN OR GREEN W/YELLOW TRACER</p> <p>DC SUPPLY POSITIVE RED OR RED SLEEVE OVER ANY COLOR EXCEPT GREEN</p> <p>NEGATIVE BLACK OR BLACK SLEEVE OVER ANY COLOR EXCEPT GREEN</p> <p>SIGNAL PAIR POSITIVE BLACK NEGATIVE WHITE</p> <p>SINGLE TRIAD POSITIVE BLACK NEGATIVE WHITE THIRD WIRE RED</p> <p>THERMOPL POSITIVE PER ANSI MC96.1 NEGATIVE PER ANSI MC96.1</p> <p>3) IDENTIFICATION OF CABLES SHALL INCLUDE CABLE NUMBER AND DESTINATION.</p> <p>4) SKID WIRING SHALL BE ARMORED BRAIDED CABLE PER MAYEKAWA REQUISITION</p> <p>5) MULTI CORE/PAIR CABLE GLANDS BY OTHERS.</p> <p>6) DUE TO SPACE LIMITATION, ALL CABLE ENTRIES ARE FROM BOTTOM</p> <p>7) SEPARATION PLATE BETWEEN ANALOG, DIGITAL &amp; POWER CABLES IS REQUIRED.</p>		
KEY PLAN :		
01	30.09.24	ISSUED FOR APPROVAL R.G M.O A.M.
00	07.09.24	ISSUED FOR APPROVAL R.G M.O A.M.
REV.	ISSUE DATE	DESCRIPTION PREPARED CHECKED APPROVED COMPANY
CLIENT:		
CONSULTING ENGINEER		
PROJECT:		
DRAWING TITLE:		
<b>Local Panel and Junction Box Wiring Diagrams OIL HTR</b>		
DRAWING NO.	REV.	SIZE SCALE SHEET
E1027-HSE-YD-IN-DIG-004	01	A3 N.T.S 18 of 18