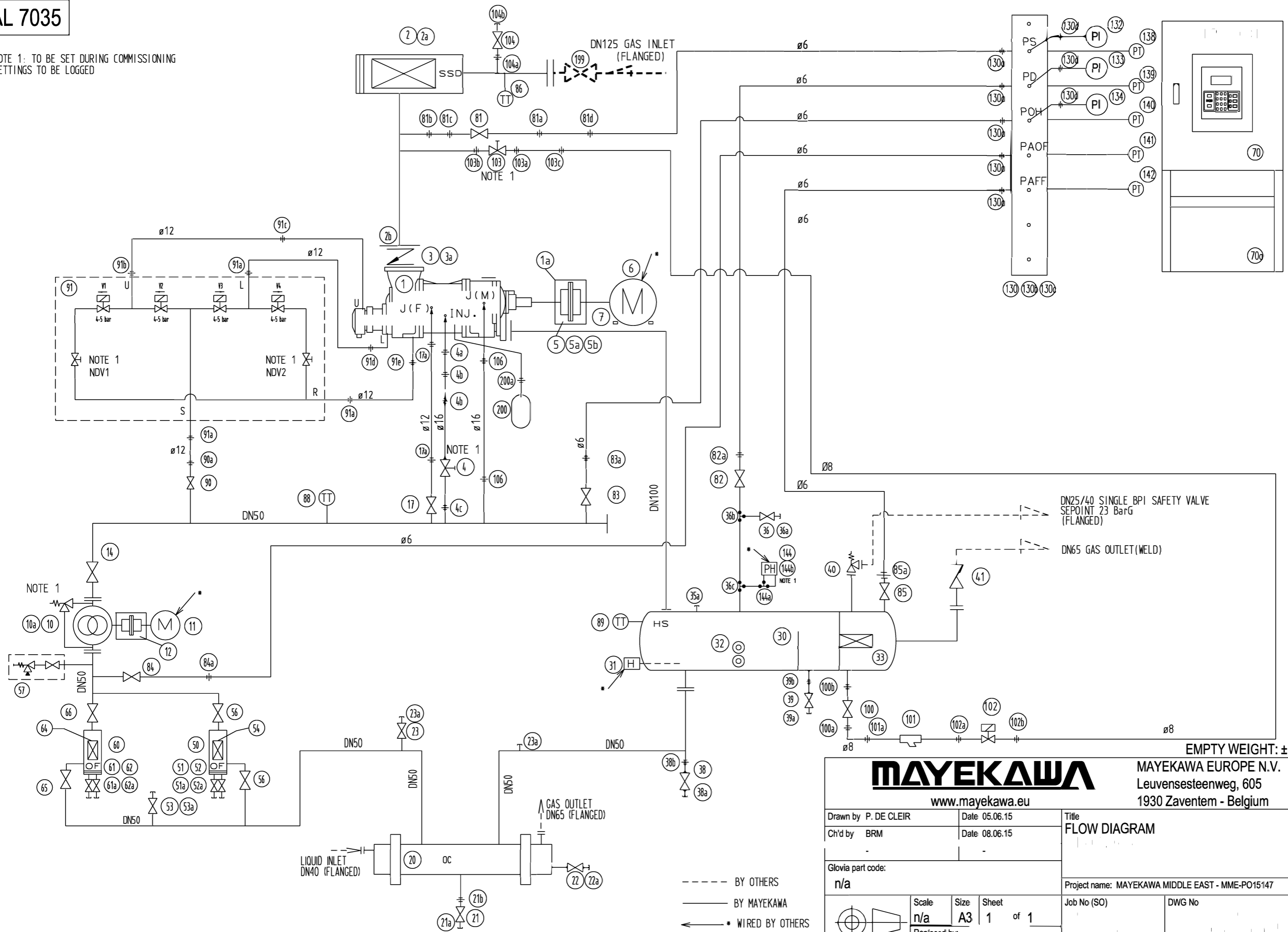


# RAL 7035

NOTE 1: TO BE SET DURING COMMISSIONING  
SETTINGS TO BE LOGGED



EMPTY WEIGHT: ± 2750 Kg



MAYEKAWA EUROPE N.V.  
Leuvensesteenweg, 605  
1930 Zaventem - Belgium

www.mayekawa.eu

Drawn by P. DE CLEIR	Date 05.06.15	Title	
Ch'd by BRM	Date 08.06.15	FLOW DIAGRAM	
Glovia part code: n/a		Project name: MAYEKAWA MIDDLE EAST - MME-PO15147	
Scale n/a	Size A3	Sheet 1 of 1	Job No (SO)
Replaced by: n/a		DWG No	Rev. <b>0</b>

----- BY OTHERS  
———— BY MAYEKAWA  
———— \* WIRED BY OTHERS

THIS DOCUMENT MUST BE TREATED AS CONFIDENTIAL. IT MUST NOT BE COPIED, DISTRIBUTED TO OTHERS OR ITS CONTENTS BE USED OR COMMUNICATED EITHER IN WHOLE OR IN PART WITHOUT PERMISSION OF MAYEKAWA EUROPE N.V. ALL RIGHTS ARE RESERVED.