



DEHDASHT PETROCHEMICAL INDUSTRY COMPANY
DEHDASHT HIGH DENSITY POLYETHYLENE PROJECT



DOCUMENT TITLE: Filter Dryer Data Sheet

POI: IFA

Contract No.: DPIC/98-12

DOCUMENT NUMBER: DPIC9812-000-VD-1002-ME-DS-0084

Rev. No.: D0

corrected

Equipment title shall be the same in all documents (PFD,PID,DSH)

DOCUMENT TITLE:

propylene Filter Dryer Data Sheet

added

tag no to be added here

This document is the property of PEDEC. Any unauthorized attempt to reproduce it, in any form, is strictly prohibited.

PURCHASER'S COMMENT/APPROVAL STATUS		Purchaser: NARGAN
1	AP: Approved (Released for Manufacturing)	Requisition No.: DPIC98-12-001-000-ME-MR-4150-0001-D1
2	AN: Approved With Minor Comments (Fabrication may Proceed)	
3	NF: Approved With Comments (Fabrication not Proceed)	Item No. (Tag No.): PK-6101
4	RJ: Rejected	
5	NR: Not be Returned	Vendor Doc. No.: DPIC9812-000-VD-1002-ME-DS-0084-D0
Date: 12.12.2021 Signature: A.AB		

REV	DATE ISSUE	PREPARED	CHECKED	APPROVED
D0	28.Nov..21	R.Goudarzi	DR.A.Nejati	DR.A.Nejati





DEHDASHT PETROCHEMICAL INDUSTRY COMPANY
DEHDASHT HIGH DENSITY POLYETHYLENE PROJECT



DOCUMENT TITLE: Filter Dryer Data Sheet

POI: IFA

Contract No.: DPIC/98-12

DOCUMENT NUMBER: DPIC9812-000-VD-1002-ME-DS-0084

Rev. No.: D0

Page	Rev-D0	Rev-D1	Rev-D2	Rev-D3	Rev-D4
1	x				
2	x				
3	x				
4					
5					
6					
7					
8					
9					
10					
11					
12					
13					
14					
15					
16					
17					
18					
19					
20					
21					
22					
23					
24					
25					
26					
27					
28					
29					
30					
31					
32					
33					
34					
35					

Page	Rev-D0	Rev-D1	Rev-D2	Rev-D3	Rev-D4
36					
37					
38					
39					
40					
41					
42					
43					
44					
45					
46					
47					
48					
49					
50					
51					
52					
53					
54					
55					
56					
57					
58					
59					
60					
61					
62					
63					
64					
65					
66					
67					
68					
69					
70					

pressure drop is negligible. no need to specify. efficiency and particle size is for filters. this is a dryer with molecular sieve.

Pressure drop related to clean and dirty condition, efficiency and particle size which shall be added.

will be mentioned in mechanical drawing and mechanical calculation

added

To be filled.

corrected

please specify

propylene

Design temperature shall be saturate temperature corresponding to design pressure which is equal to 125C+10C. Please recheck.

please specify ASTM no.

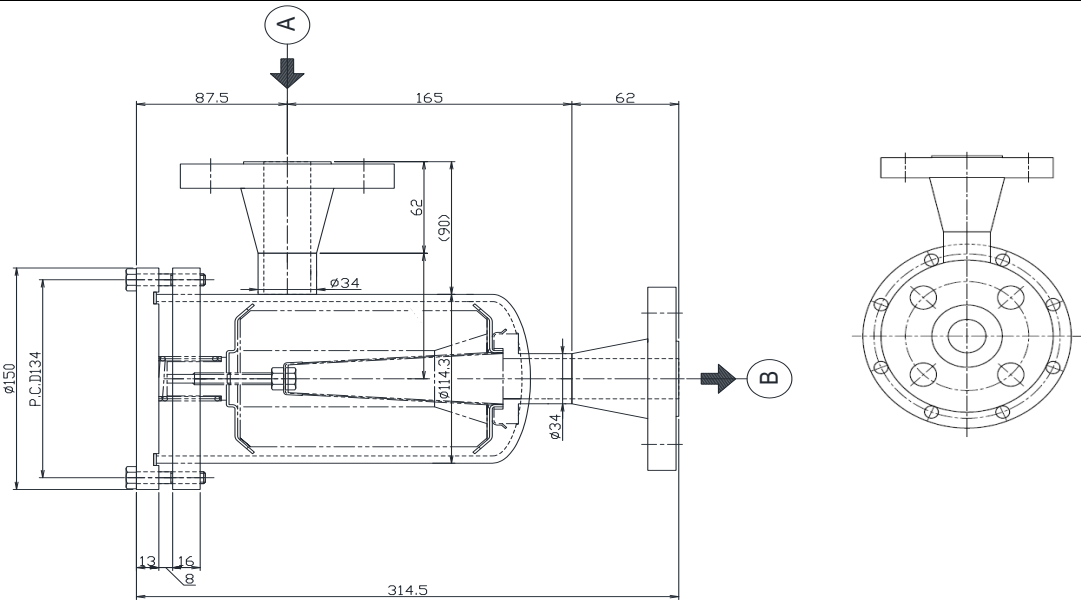
material is correct. all detail of material will be given in mechanical drawings.

we are not agree with this comment but we consider 135 C for design temperature. please be inform that this package is a refrigeration package not a heating one.

1-DONE
2-post weld heat treat will be added in it's mechanical drawing if needed.

REMARKS:
1- FILTER SHUL BE FILLED WITH MOLECLAR SIEVE FOR DRYING PROPYLENE.

1 SERVICE		PROPYLENE FILTER/ DRYER			ITEM NO.	F-PK6101-2	
2 TYPE		HORIZONTAL			QUANTITY :	1	
3		4" -SCH 40	TL.TL. :	please specify	CAPACITY	SHELL :	m ³
4 WEIGHT		EMPTY:	OPERATING:	kg	INSTALLATION:	OUTDOOR	
6 DESIGN & TEST DATA				MATERIALS			
7 SHELL				SHELL		JACKET	
9 FLUID				SHELL		JACKET	
10 TEMPERATURE		DESIGN	-45/120	°C			
11		OPERATING	48.5	°C			
12		DESIGN	23.0	BarG			
13 PRESSURE		OPERATING	18.6	BarG			
14		VACUUM	1.013	BarG			
15 DENSITY @PT			461	kg/m ³			
16 VISCOSITY @PT			0.06	cP			
17 CORROSION ALLOW			3.0	mm			
18 VAC DESIGN		yes	NO				
19		HYDRO	34.5	BarG			
20 TEST		PNUEM LEAK		BarG			
21		VACUUM					
22 POST WELD HEAT TREAT							
23 RADIOGRAPHIC EXAM. (CYL/HD)			FULL				
24 JOINT EFF (CYL/HD)			1.0				
25 WELDER'S QUALIF							
26 SEISMIC COEF							
27 WIND LOAD							
28 TYPE OF HEAD			CAP				
29 INSULATION (THK,AREA)			NO	mm			
30 SURFACE PREP EXT/INT			ST3/ -				
31 FIRE PROOFING			N/A				
32 PAINTING			AS PER PROJECT SPEC.				
33							
34 ACCESS. & SPL PARTS			COALESCER: 2 STAGES				
35							
36							
37 SPARE PARTS							
38 TOLERANCE							
39 NOZZELS & OPENINGS (per one shell)							
40 MARK	NO.	SIZE	FLANGE			SERVICE	
41			RATING	TYPE	FACE		
42	A	1"	ASME 300#	WN	RF	INLET	
43	B	1"	ASME 300#	WN	RF	OUTLET	
44	M	OD: 150 mm	-	-	-	COVER	
45 SKETCH							



This document is the property of PEDEC. Any unauthorized attempt to reproduce it, in any form, is strictly prohibited.