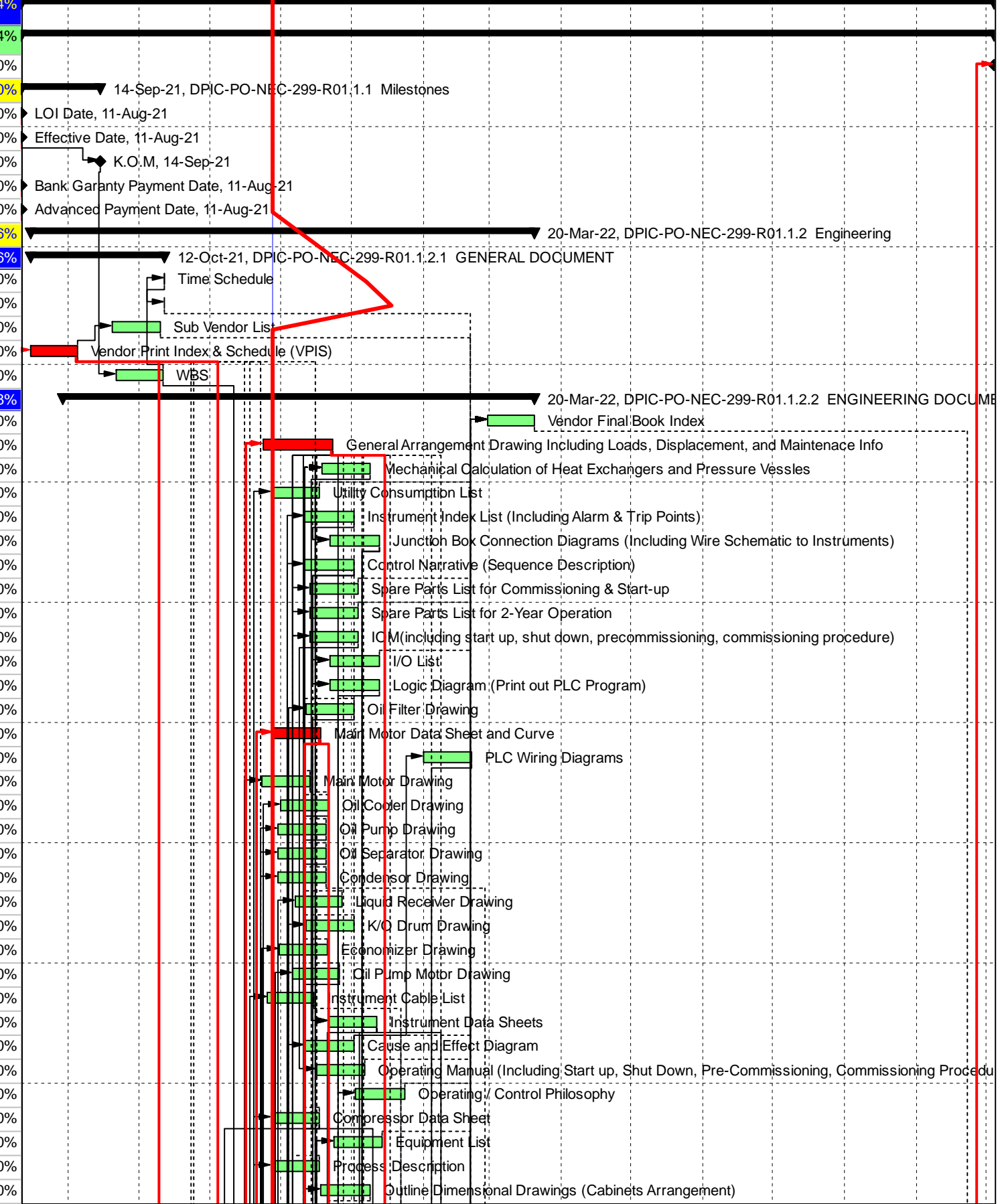


Rejected

DPIC-PO-NEC-299-R01 DPIC-I		Classic Schedule Layout						28-Nov-21 16:45												
Activity ID	Start	Finish	Original	% WF	Schedule % Complete	Performance % Complete	Aug	Sep	Oct	Nov	Dec	Jan	Feb	Mar	Apr	May	Jun	Jul	Aug	Sep
After approval baseline , please sent update																				
DPIC-PO-NEC-299-R01.1 DPIC						2.44%														
222	Finish					0%														
DPIC-PO-NEC-299-R01.1.1 Mileston	11-Aug-21	14-Sep-21	34	0.00	0%	0%														
3	LOI Date	11-Aug-21	0		100%	0%														
4	Effective Date	11-Aug-21	0		100%	0%														
5	K.O.M	14-Sep-21	0		100%	0%														
6	Bank Garanty Payment	11-Aug-21	0		100%	0%														
7	Advanced Payment Date	11-Aug-21	0		100%	0%														
DPIC-PO-NEC-299-R01.1.2 Engine	15-Aug-21 A	20-Mar-22	218	5.00	22.66%	20.36%														
DPIC-PO-NEC-299-R01.1.2.1 GENER	15-Aug-21 A	12-Oct-21	109	0.50	98.67%	76%														
12	Time Schedule	12-Oct-21 A	40	0.05	100%	60%														
13	Project Monthly Report f	02-Nov-21 A	30	0.05	86.67%	60%														
14	Sub Vendor List	19-Sep-21	21	0.10	100%	60%														
10	Vendor Print Index & Scl	15-Aug-21 A	21	0.20	100%	80%														
11	WBS	21-Sep-21	21	0.10	100%	100%														
DPIC-PO-NEC-299-R01.1.2.2 ENGINE	29-Aug-21 A	20-Mar-22	204	3.90	14.88%	13.28%														
16	Vendor Final Book Index	28-Feb-22	21	0.10	0%	0%														
18	General Arrangement D	23-Nov-21	30	0.30	14.17%	0%														
19	Mechanical Calculation	19-Dec-21	21	0.30	0%	0%														
20	Utility Consumption List	27-Nov-21	21	0.04	4.76%	0%														
21	Instrument Index List (Ir	11-Dec-21	21	0.04	0%	0%														
22	Junction Box Connectio	22-Dec-21	21	0.04	0%	0%														
23	Control Narrative (Sequ	11-Dec-21	21	0.04	0%	0%														
24	Spare Parts List for Con	13-Dec-21	21	0.04	0%	0%														
25	Spare Parts List for 2-Ye	13-Dec-21	21	0.04	0%	0%														
26	IOM(including start up, s	13-Dec-21	21	0.04	0%	0%														
27	I/O List	22-Dec-21	21	0.04	0%	0%														
28	Logic Diagram (Print out	22-Dec-21	21	0.04	0%	0%														
31	Oil Filter Drawing	12-Dec-21	21	0.05	0%	0%														
32	Main Motor Data Sheet :	28-Nov-21	21	0.04	0%	0%														
33	PLC Wiring Diagrams	31-Jan-22	21	0.04	0%	0%														
35	Main Motor Drawing	23-Nov-21	21	0.05	23.95%	0%														
44	Oil Cooler Drawing	01-Dec-21	21	0.05	0%	0%														
45	Oil Pump Drawing	30-Nov-21	21	0.05	0%	0%														
46	Oil Separator Drawing	30-Nov-21	21	0.05	0%	0%														
47	Condensor Drawing	30-Nov-21	21	0.05	0%	0%														
48	Liquid Receiver Drawing	07-Dec-21	21	0.05	0%	0%														
49	K/O Drum Drawing	12-Dec-21	21	0.05	0%	0%														
50	Economizer Drawing	30-Nov-21	21	0.05	0%	0%														
51	Oil Pump Motor Drawing	06-Dec-21	21	0.05	0%	0%														
52	Instrument Cable List	25-Nov-21	21	0.05	14.37%	0%														
53	Instrument Data Sheets	21-Dec-21	21	0.04	0%	0%														
54	Cause and Effect Diagr	11-Dec-21	21	0.04	0%	0%														
55	Operating Manual (Inclu	16-Dec-21	21	0.04	0%	0%														
56	Operating / Control Philc	02-Jan-22	21	0.04	0%	0%														
57	Compressor Data Sheet	27-Nov-21	21	0.04	4.76%	0%														
58	Equipment List	24-Dec-21	21	0.04	0%	0%														
59	Process Description	27-Nov-21	21	0.04	4.76%	0%														
60	Outline Dimensional Dra	18-Dec-21	21	0.04	0%	0%														



█ Actual Level of Effort
 █ Remaining Work
 █ Critical Remaining Work
 ◆ Milestone
 ▼ summary

DPIC-PO-NEC-299-1002				Classic Schedule Layout					28-Nov-21 16:45											
Activity ID	Activity Name	Start	Finish	Original Duration	% WF	Schedule % Complete	Performance % Complete	B, 2021			Qtr 4, 2021		Qtr 1, 2022			Qtr 2, 2022			Qtr 3, 2022	
								Aug	Sep	Oct	Nov	Dec	Jan	Feb	Mar	Apr	May	Jun	Jul	Aug
92	NDE Procedure	22-Nov-21 A	29-Dec-21	21	0.04	28.57%	80%													
96	Inspection and Test Pro	05-Jan-22 A	15-Dec-21	21	0.02	0%	80%													
DPIC-PO-NEC-299-R01.1.3 Supply c				301	35.00	3.57%	4.06%													
DPIC-PO-NEC-299-R01.1.3.2 Domestic				104	10.00	0%	0%													
DPIC-PO-NEC-299-R01.1.3.2.1 Pipe				25	1.00	0%	0%													
141	PO placement (Pipe)	24-Jan-22	29-Jan-22	5	0.10	0%	0%													
142	EX Work (Pipe)	29-Jan-22	13-Feb-22	15	0.40	0%	0%													
143	Delivery to shop (Pipe)	13-Feb-22	18-Feb-22	5	0.50	0%	0%													
DPIC-PO-NEC-299-R01.1.3.2.2 Pla				25	1.00	0%	0%													
145	PO placement (Plate)	13-Dec-21	18-Dec-21	5	0.10	0%	0%													
146	EX Work (Plate)	18-Dec-21	02-Jan-22	15	0.40	0%	0%													
147	Delivery to shop (Plate)	02-Jan-22	07-Jan-22	5	0.50	0%	0%													
DPIC-PO-NEC-299-R01.1.3.2.3 Fla				50	1.00	0%	0%													
149	PO placement (Flange & Fittir	13-Dec-21	18-Dec-21	5	0.10	0%	0%													
150	EX Work (Flange & Fittir	18-Dec-21	27-Jan-22	40	0.40	0%	0%													
151	Delivery to shop (Flange	27-Jan-22	01-Feb-22	5	0.50	0%	0%													
DPIC-PO-NEC-299-R01.1.3.2.4 Ga				40	1.00	0%	0%													
153	PO placement (Gasket)	13-Dec-21	18-Dec-21	5	0.10	0%	0%													
154	EX Work (Gasket)	18-Dec-21	17-Jan-22	30	0.40	0%	0%													
155	Delivery to shop (Gasket)	17-Jan-22	22-Jan-22	5	0.50	0%	0%													
DPIC-PO-NEC-299-R01.1.3.2.5 Bol				40	1.00	0%	0%													
157	PO placement (Bolt & N	13-Dec-21	18-Dec-21	5	0.10	0%	0%													
158	EX Work (Bolt & Nut)	18-Dec-21	17-Jan-22	30	0.40	0%	0%													
159	Delivery to shop (Bolt &	17-Jan-22	22-Jan-22	5	0.50	0%	0%													
DPIC-PO-NEC-299-R01.1.3.2.6 Ele				40	1.00	0%	0%													
161	PO placement (Electrical)	12-Jan-22	17-Jan-22	5	0.10	0%	0%													
162	EX Work (Electrical)	17-Jan-22	16-Feb-22	30	0.40	0%	0%													
163	Delivery to shop (Electri	16-Feb-22	21-Feb-22	5	0.50	0%	0%													
DPIC-PO-NEC-299-R01.1.3.2.7 Mai				40	1.00	0%	0%													
165	PO placement (Manual	09-Jan-22	13-Jan-22	5	0.10	0%	0%													
166	EX Work (Manual valves)	14-Jan-22	12-Feb-22	30	0.40	0%	0%													
167	Delivery to shop (Manue	13-Feb-22	17-Feb-22	5	0.50	0%	0%													
DPIC-PO-NEC-299-R01.1.3.2.8 Ins				40	1.00	0%	0%													
169	PO placement (Domesti	15-Feb-22	20-Feb-22	5	0.10	0%	0%													
170	EX Work (Domestic Ins)	20-Feb-22	22-Mar-22	30	0.40	0%	0%													
171	Delivery to shop (Dome	22-Mar-22	27-Mar-22	5	0.50	0%	0%													
DPIC-PO-NEC-299-R01.1.3.2.9 PLC				40	1.00	0%	0%													
173	PO placement (PLC)	11-Feb-22	16-Feb-22	5	0.10	0%	0%													
174	EX Work (PLC)	16-Feb-22	18-Mar-22	30	0.40	0%	0%													
175	Delivery to shop (PLC)	18-Mar-22	23-Mar-22	5	0.50	0%	0%													
DPIC-PO-NEC-299-R01.1.3.2.10 OI				40	1.00	0%	0%													
177	PO placement (Other m	04-Jan-22	09-Jan-22	5	0.10	0%	0%													
178	EX Work (Other materia	09-Jan-22	08-Feb-22	30	0.40	0%	0%													
179	Delivery to shop (Other	08-Feb-22	13-Feb-22	5	0.50	0%	0%													
DPIC-PO-NEC-299-R01.1.3.1 Foreign				301	25.00	5%	5.68%													
DPIC-PO-NEC-299-R01.1.3.1.1 Spt				165	1.70	0%	0%													
105	PO placement (Other Va	02-Jan-22	11-Jan-22	10	0.17	0%	0%													
106	EX Work (Other Valves)	12-Jan-22	11-May-22	120	0.68	0%	0%													
107	Custom clearance (Oth	12-May-22	10-Jun-22	30	0.51	0%	0%													
108	Delivery to shop (Other	11-Jun-22	15-Jun-22	5	0.34	0%	0%													
DPIC-PO-NEC-299-R01.1.3.1.2 Ins				105	1.70	0%	0%													
110	PO placement (Instrumt	29-Jan-22	08-Feb-22	10	0.17	0%	0%													

█ Actual Level of Effort
 █ Remaining Work
 █ Critical Remaining Work
 ◆ Milestone
 ◆ summary

DPIC-PO-NEC-299-1002				Classic Schedule Layout					28-Nov-21 16:45											
Activity ID	Activity Name	Start	Finish	Original Duration	% WF	Schedule % Complete	Performance % Complete	Qtr 4, 2021		Qtr 1, 2022			Qtr 2, 2022			Qtr 3, 2022				
								Aug	Sep	Oct	Nov	Dec	Jan	Feb	Mar	Apr	May	Jun	Jul	Aug
200	Part Fabrication-(cutting	07-Jan-22	27-Jan-22	20	3.31	0%	0%													
201	Part Assembly	27-Jan-22	16-Feb-22	20	1.05	0%	0%													
202	Part Welding	28-Feb-22	19-Mar-22	20	0.82	0%	0%													
203	NDT Skid	20-Mar-22	29-Mar-22	10	0.82	0%	0%													
DPIC-PO-NEC-299-R01.1.4.5 Fabrica				29-May-22	23-Jul-22	55	3.00	0%	0%											
205	Part Fabrication-(cutting	29-May-22	18-Jun-22	20	1.75	0%	0%													
206	Part Assembly	18-Jun-22	03-Jul-22	15	0.75	0%	0%													
207	Part Welding	03-Jul-22	18-Jul-22	15	0.25	0%	0%													
208	Hydro test	18-Jul-22	23-Jul-22	5	0.25	0%	0%													
DPIC-PO-NEC-299-R01.1.4.6 Assem				14-Aug-22	15-Sep-22	32	6.00	0%	0%											
210	Inter connecting piping	14-Aug-22	29-Aug-22	15	3.31	0%	0%													
211	Part Assembly	29-Aug-22	03-Sep-22	5	1.05	0%	0%													
212	Part Welding	03-Sep-22	10-Sep-22	7	0.82	0%	0%													
213	NDT packages on skid	10-Sep-22	15-Sep-22	5	0.82	0%	0%													
DPIC-PO-NEC-299-R01.1.5 FINAL IN				28-Sep-22	30-Sep-22	2	10.00	0%	0%											
219	FINAL INSPECTION TE	28-Sep-22	30-Sep-22	2	10.00	0%	0%													
DPIC-PO-NEC-299-R01.1.6 Final Da				30-Sep-22	04-Oct-22	4	5.00	0%	0%											
221	VENDOR FINAL DATA I	30-Sep-22	04-Oct-22	4	5.00	0%	0%													

█ Actual Level of Effort
 █ Remaining Work
 █ Actual Work
 █ Critical Remaining Work
 ◆ Milestone
 ── summary