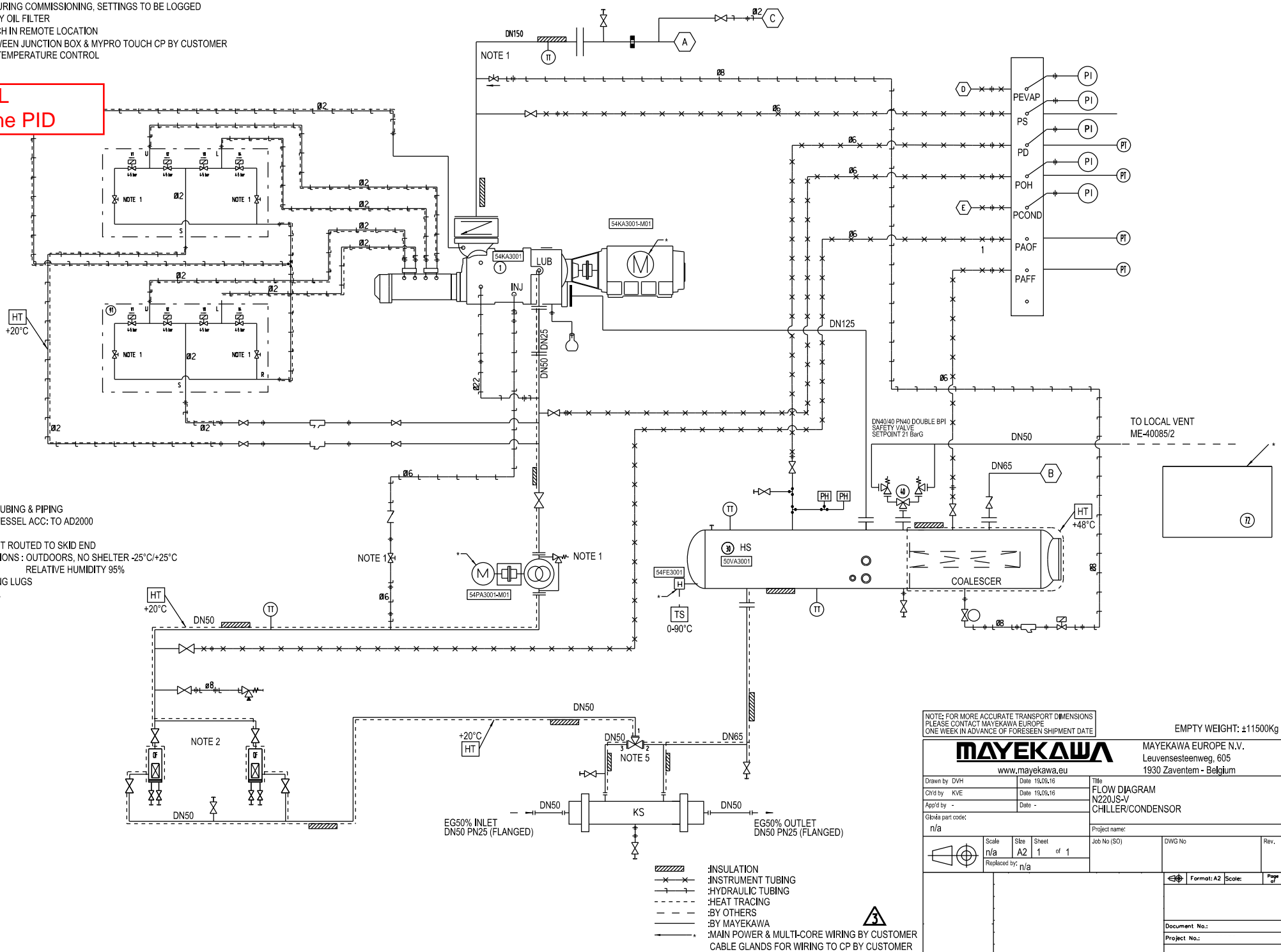


- NOTE 1 : TO BE SET DURING COMMISSIONING, SETTINGS TO BE LOGGED
 NOTE 2 : ONE STANDBY OIL FILTER
 NOTE 3 : MYPRO TOUCH IN REMOTE LOCATION
 NOTE 4 : WIRING BETWEEN JUNCTION BOX & MYPRO TOUCH CP BY CUSTOMER
 NOTE 5 : AUTOMATIC TEMPERATURE CONTROL

**TYPICAL
 Propylene PID**

GENERAL NOTES :

- CARBON STEEL TUBING & PIPING
- CARBON STEEL VESSEL ACC: TO AD2000
- NO NOISE HOOD
- TIE-IN POINTS NOT ROUTED TO SKID END
- AMBIENT CONDITIONS : OUTDOORS, NO SHELTER -25°C/+25°C
 RELATIVE HUMIDITY 95%
- INCLUDING LIFTING LUGS
- SEISMIC ZONE 2A



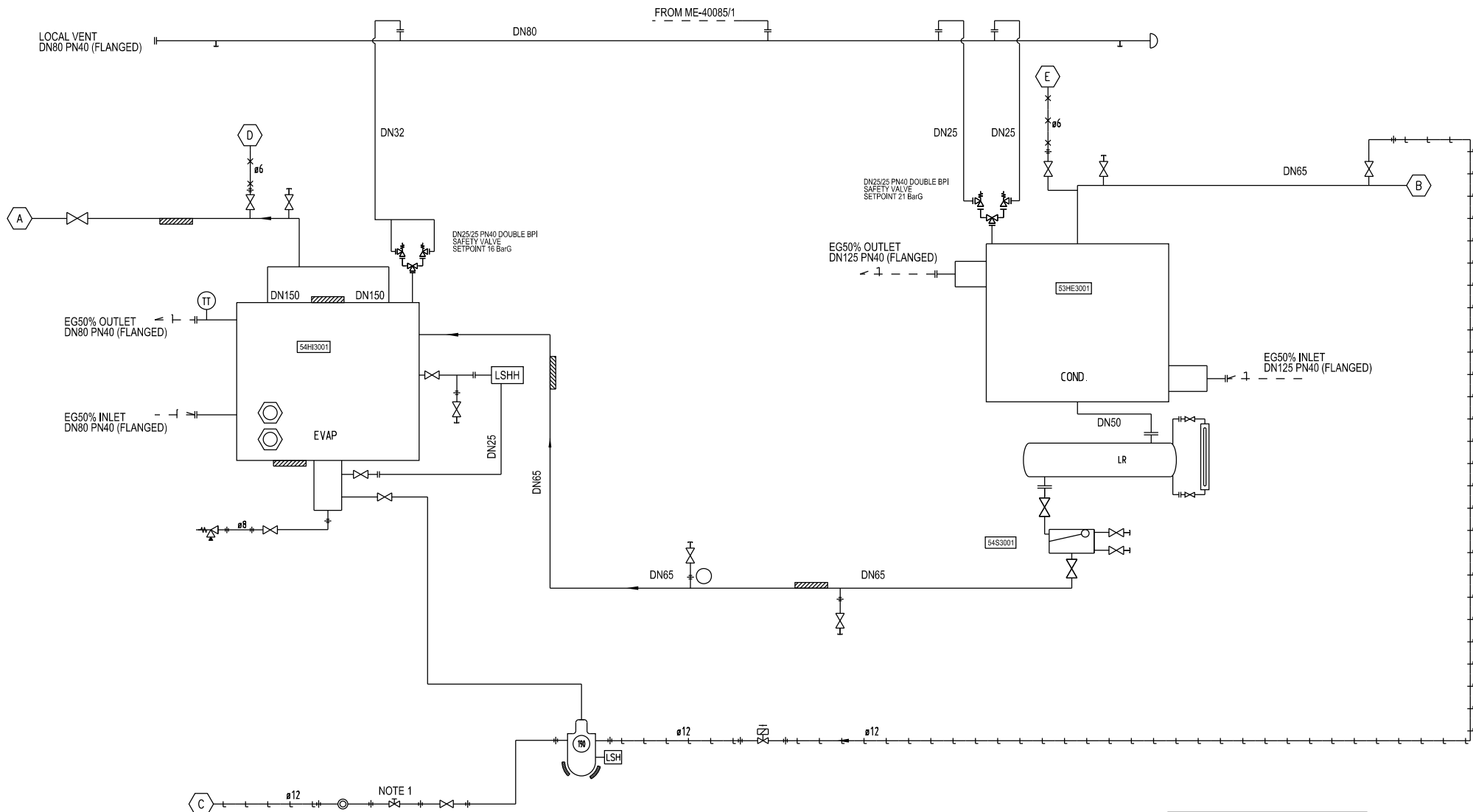
NOTE: FOR MORE ACCURATE TRANSPORT DIMENSIONS
 PLEASE CONTACT MAYEKAWA EUROPE
 ONE WEEK IN ADVANCE OF FORESEEN SHIPMENT DATE

EMPTY WEIGHT: ±11500Kg

		MAYEKAWA EUROPE N.V. Leuvensesteenweg, 605 1930 Zaventem - Belgium	
		www.mayekawa.eu	
Drawn by DVH	Date 15.05.16	Title FLOW DIAGRAM N220JS-V CHILLER/CONDENSOR	
Chkd by KVE	Date 15.08.16	Project name:	
App'd by -	Date -	Job No (SO)	
Globe part code: n/a		DWG No	
Scale n/a		Rev.	
Sheet A2		1 of 1	
Replaced by: n/a		Format: A2 Scale: Page of	
Document No.:		Project No.:	

THIS DOCUMENT MUST BE TREATED AS CONFIDENTIAL. IT MUST NOT BE COPIED, DISTRIBUTED TO OTHERS, OR ITS CONTENTS BE USED OR COMMUNICATED EITHER IN WHOLE OR IN PART WITHOUT PERMISSION OF MAYEKAWA EUROPE N.V., ALL RIGHTS ARE RESERVED.

THIS DOCUMENT MUST BE TREATED AS CONFIDENTIAL. IT MUST NOT BE COPIED, DISTRIBUTED TO OTHERS, OR ITS CONTENTS BE USED OR COMMUNICATED EITHER IN WHOLE OR IN PART WITHOUT PERMISSION OF MAYEKAWA EUROPE N.V.. ALL RIGHTS ARE RESERVED.



NOTE 1
 a12

5	FOR APPROVAL	PDC	15.02.17
4	FOR APPROVAL	PDC	13.01.17
3	FOR APPROVAL	DVH	06.12.16
2	ADDED SERVICE VALVES # 187	PDC	08.11.16
1	FOR APPROVAL	PDC	24.10.16
No	Description of revision	Drawn by	



- :INSULATION
- :INSTRUMENT TUBING
- :HYDRAULIC TUBING
- :HEAT TRACING
- :BY OTHERS
- :BY MAYEKAWA
- :MAIN POWER & MULTI-CORE WIRING BY CUSTOMER
- :CABLE GLANDS BY CUSTOMER

NOTE: FOR MORE ACCURATE TRANSPORT DIMENSIONS PLEASE CONTACT MAYEKAWA EUROPE ONE WEEK IN ADVANCE OF FORESEEN SHIPMENT DATE

EMPTY WEIGHT: ±11500Kg

MAYEKAWA www.mayekawa.eu

MAYEKAWA EUROPE N.V.
Leuvensesteenweg, 605
1930 Zaventem - Belgium

Drawn by DVH	Date 15.05.16	Title	FLOW DIAGRAM
Chkd by KVE	Date 15.05.16	Model	N220JS-V
App'd by -	Date -	Project name	WARTSILA - P29955
Global part code:	n/a	Job No (SO)	
Scale	n/a	Sheet	1 of 1
Replaced by:	n/a	DWG No	ME-40085/2
		Format: A2	Scale:

The contents of this document is confidential and its disclosure to third parties is prohibited. This document may not be copied or disseminated in any form without the prior written permission of Mayekawa Europe N.V.