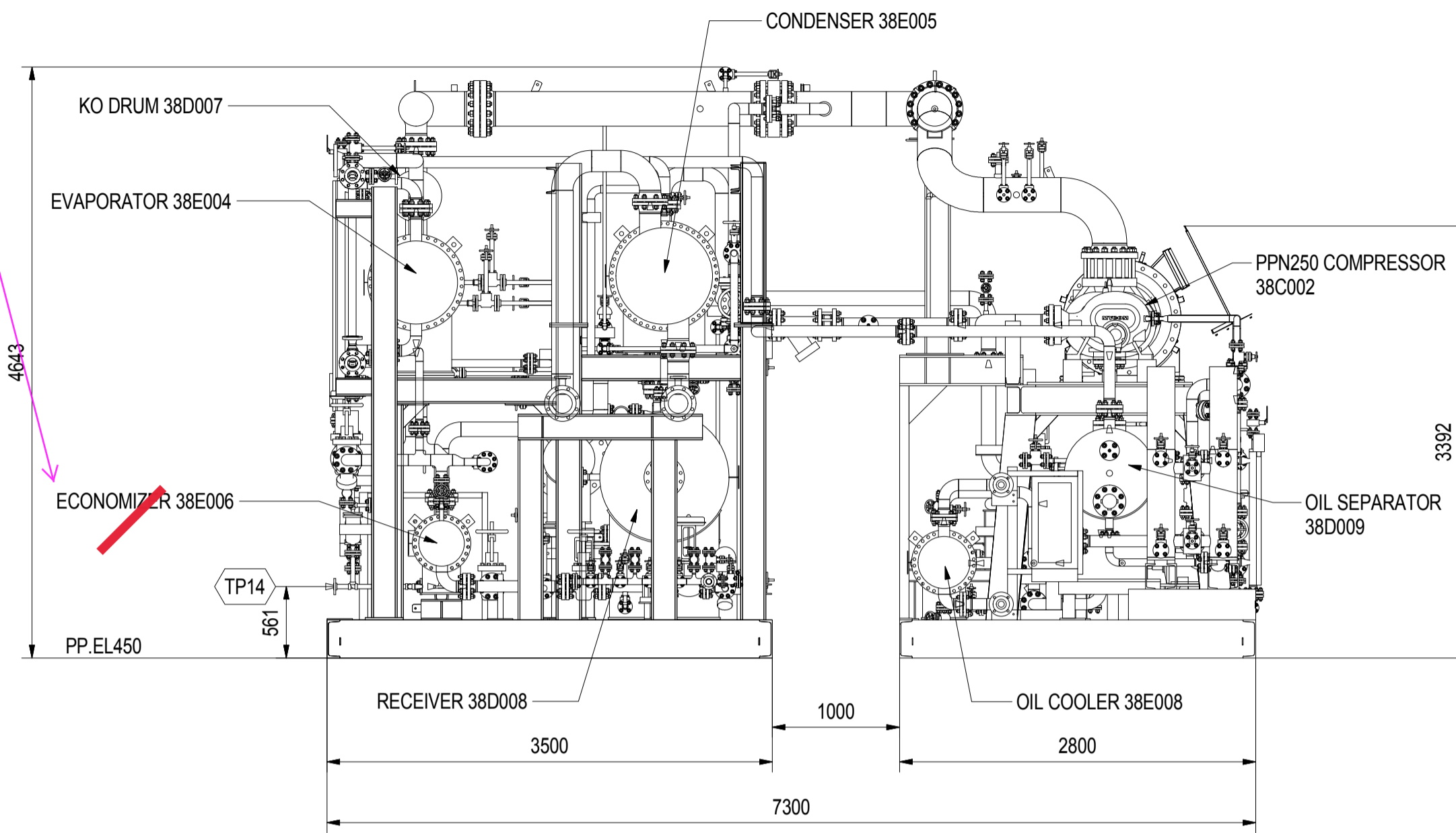
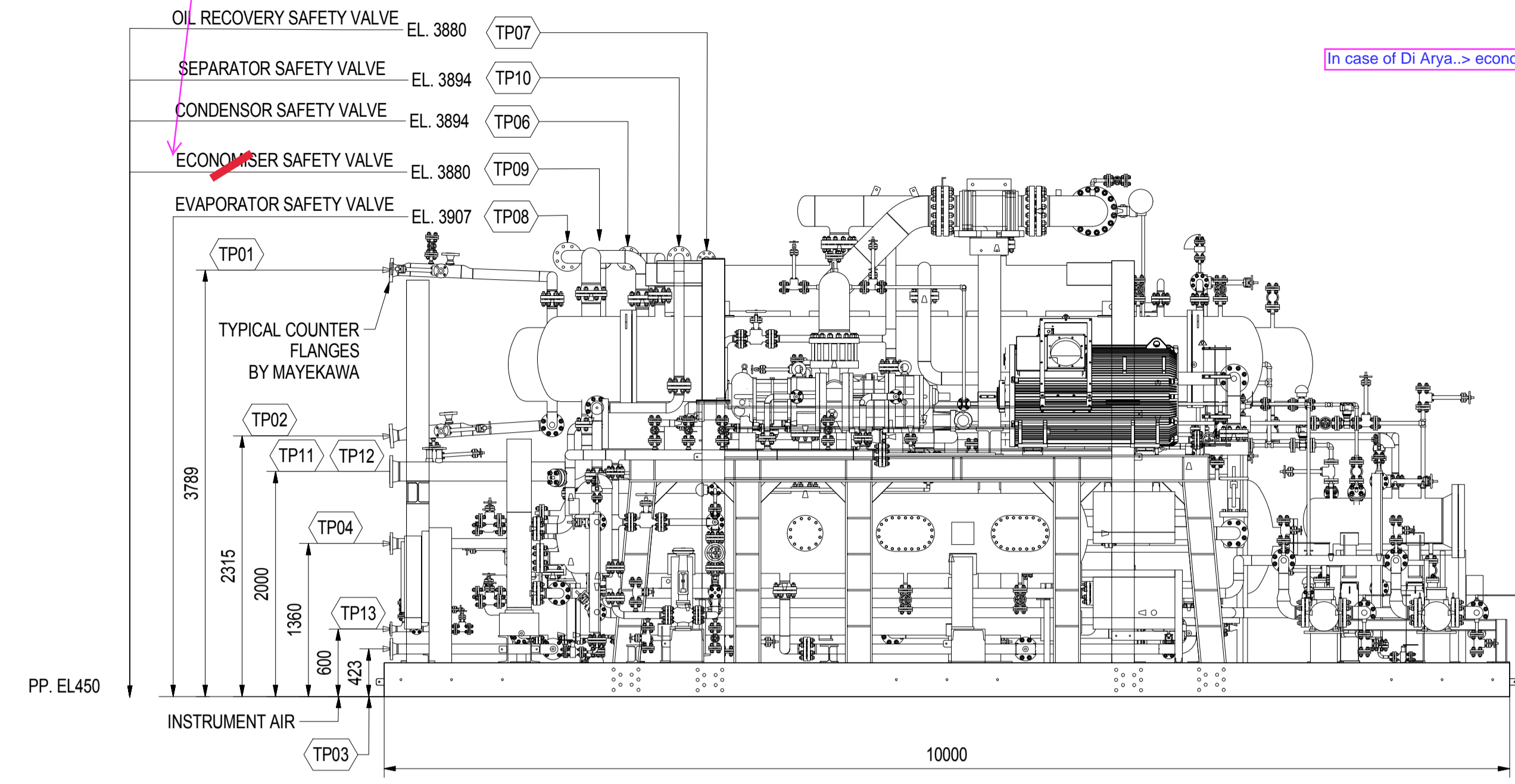
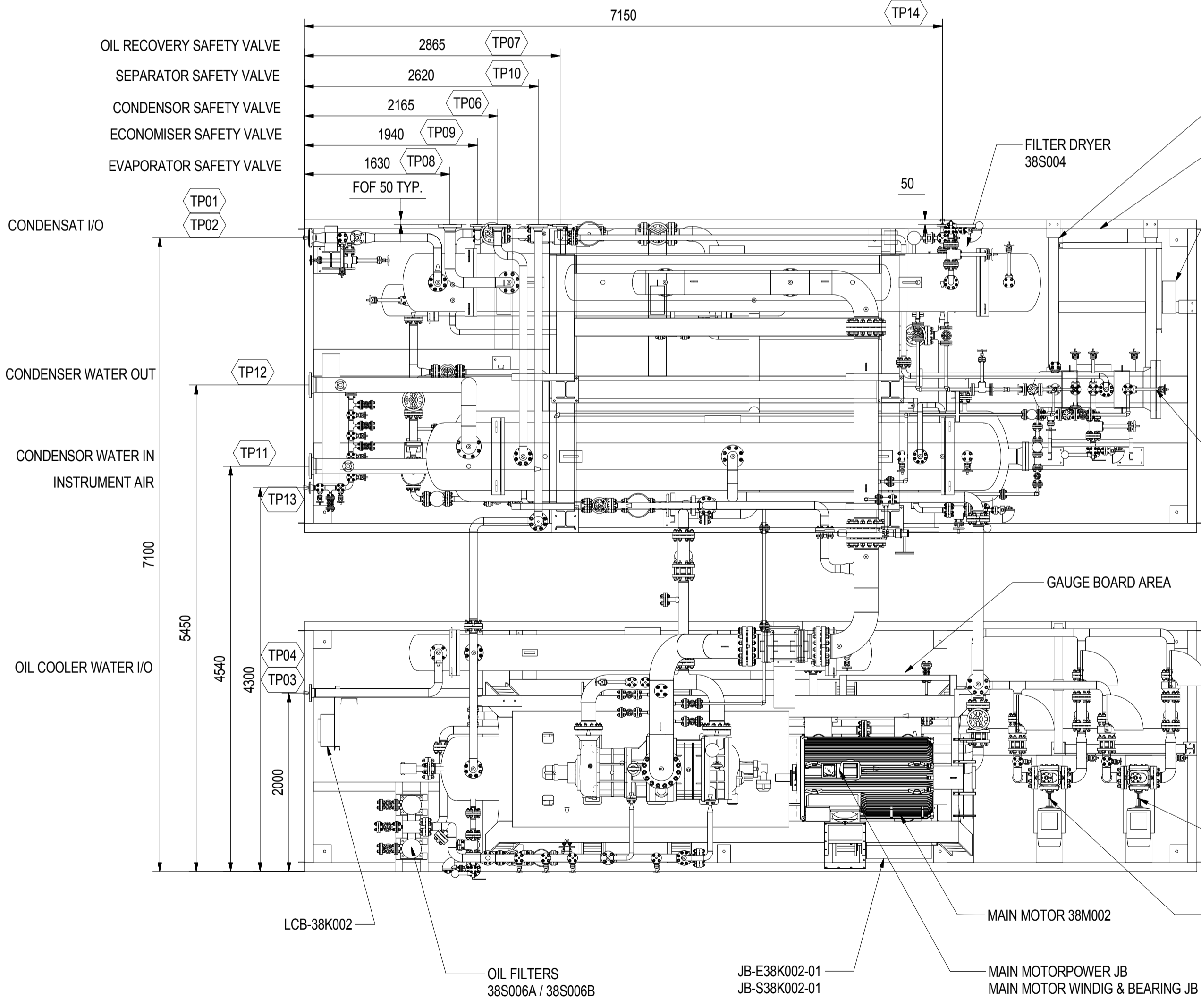


In case of Di Arya... economizer is not required

In case of Di Arya... economizer is not required



Nr	NPS	PR	STD	Contact face	Designation
TP01	3"	300#	ANSI B16.5	RF-SMOOTH (125-250 AARH)	Ethylene inlet to 38E004
TP02	3"	300#	ANSI B16.5	RF-SMOOTH (125-250 AARH)	Ethylene outlet from 38E004
TP03	3"	150#	ANSI B16.5	RF-SMOOTH (125-250 AARH)	Cooling water inlet to oil cooler 38E008
TP04	3"	150#	ANSI B16.5	RF-SMOOTH (125-250 AARH)	Cooling water outlet from oil cooler 38E008
TP07	2"	300#	ANSI B16.5	RF-SMOOTH (125-250 AARH)	Condenser safety valve
TP08	4"	300#	ANSI B16.5	RF-SMOOTH (125-250 AARH)	Oil receiver safety valve
TP09	2"	300#	ANSI B16.5	RF-SMOOTH (125-250 AARH)	Economizer safety valve
TP10	3"	300#	ANSI B16.5	RF-SMOOTH (125-250 AARH)	Separator safety valve
TP11	6"	150#	ANSI B16.5	RF-SMOOTH (125-250 AARH)	Cooling water inlet to condenser 38E005
TP12	6"	150#	ANSI B16.5	RF-SMOOTH (125-250 AARH)	Cooling water outlet from condenser 38E005
TP13	1 1/2"	150#	ANSI B16.5	RF-SMOOTH (125-250 AARH)	Instrument air inlet
TP14	1"	300#	ANSI B16.5	RF-SMOOTH (125-250 AARH)	Propylene header



GAUGE BOARD AREA

FILTER DRYER 38S004

JB-S38K002-02

JB-E38K002-02

OIL RECOVERY TANK 38D010

GAUGE BOARD AREA

LCB-38K002

OIL FILTERS 38S006A / 38S006B

JB-E38K002-01

JB-S38K002-01

MAIN MOTORPOWER JB

MAIN MOTOR WINDIG & BEARING JB

MAIN MOTOR 38M002

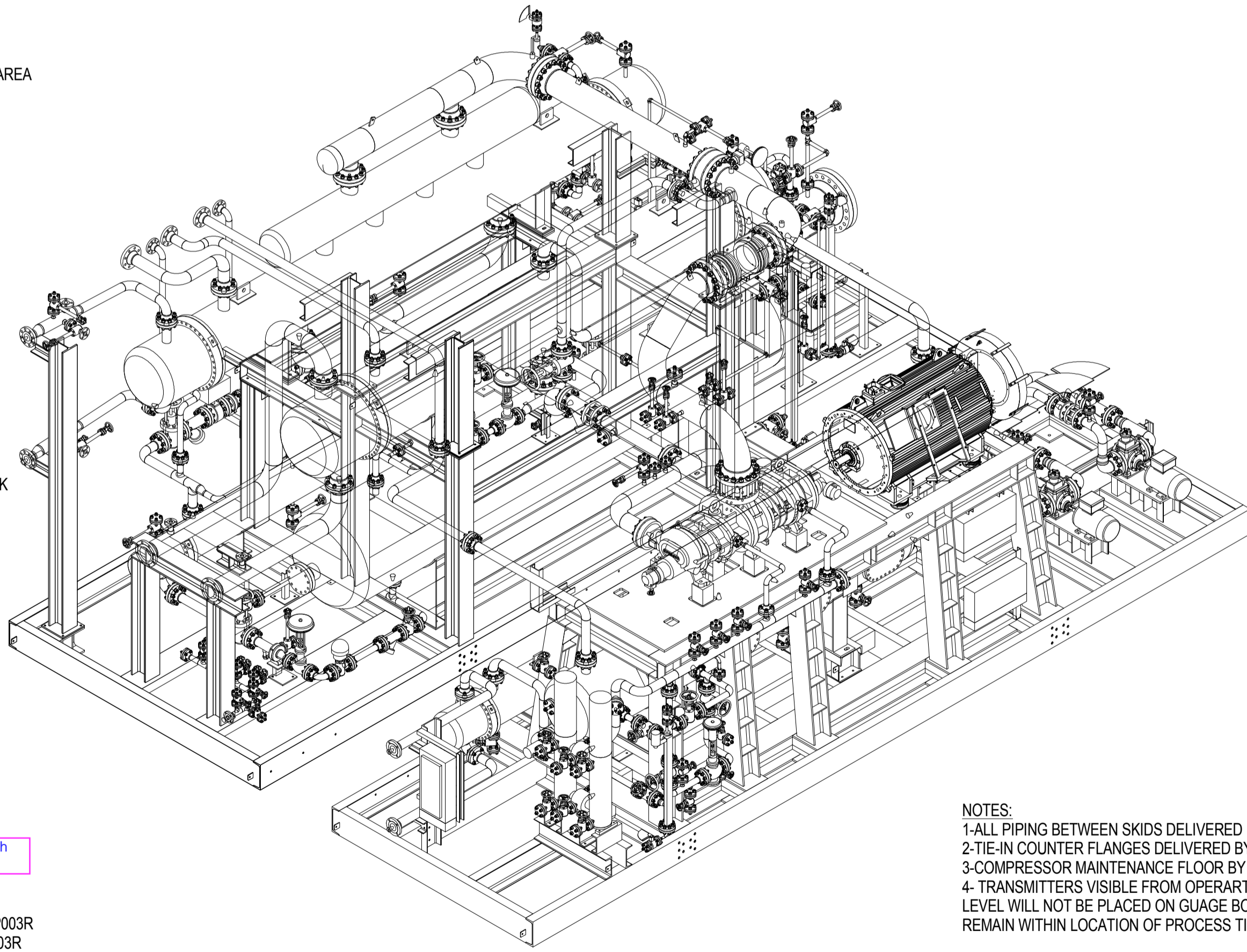
Only 1 oil pump with motor

OIL PUMP 38P003R

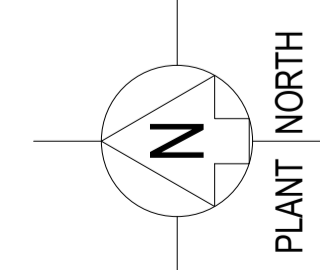
MOTOR 38M003R

OIL PUMP 38P003A

MOTOR 38M003A



NOTES:  
 1-ALL PIPING BETWEEN SKIDS DELIVERED BY ME.  
 2-TIE-IN COUNTER FLANGES DELIVERED BY ME LOOSZ.  
 3-COMPRESSOR MAINTENANCE FLOOR BY OTHERS.  
 4-TRANSMITTERS VISIBLE FROM OPERATOR HEIGHT.  
 LEVEL WILL NOT BE PLACED ON GAUGE BOARD BUT REMAIN WITHIN LOCATION OF PROCESS TIE-IN POINT.

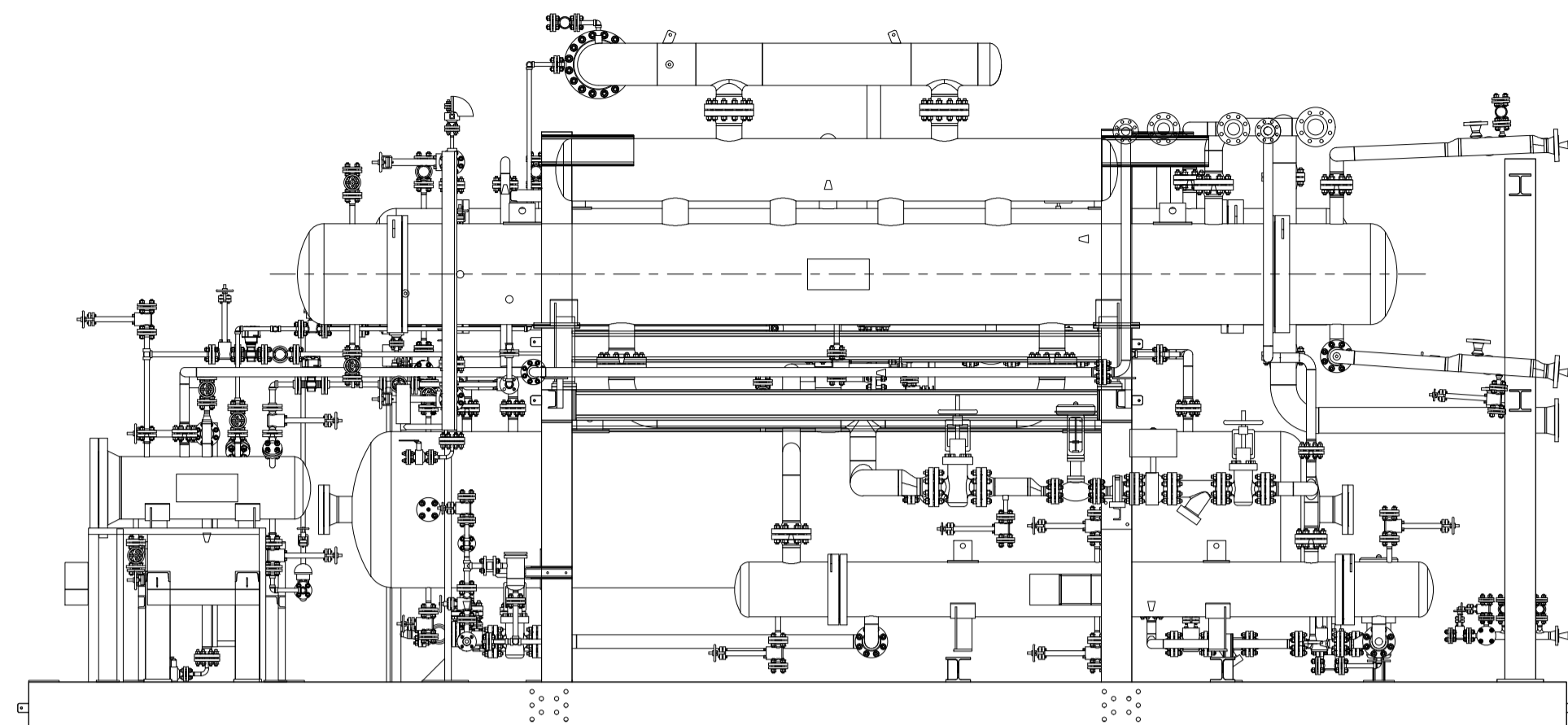


05	Rev	Description	Drw	App	26/04/2013
Revision table					
<b>MAYEKAWA</b>		MAYEKAWA EUROPE N.V. Leuvensesteenweg, 605 1930 Zaventem - Belgium	Customer: IRCP / CTCI Proj. nr.: CAP-90-10-10-911-142300 Proj. name: Phosox 0.1 Ext. dwg. nr.: 06-ME2381002-3	Ext. Rev.: E	
Unit general arrangement					
PLAN VIEW, MAIN ELEVATION & ISOMETRY					
Scale: SO				Sheet 1 of 2	
060824-0-ME-UL-10000				Doc. number	

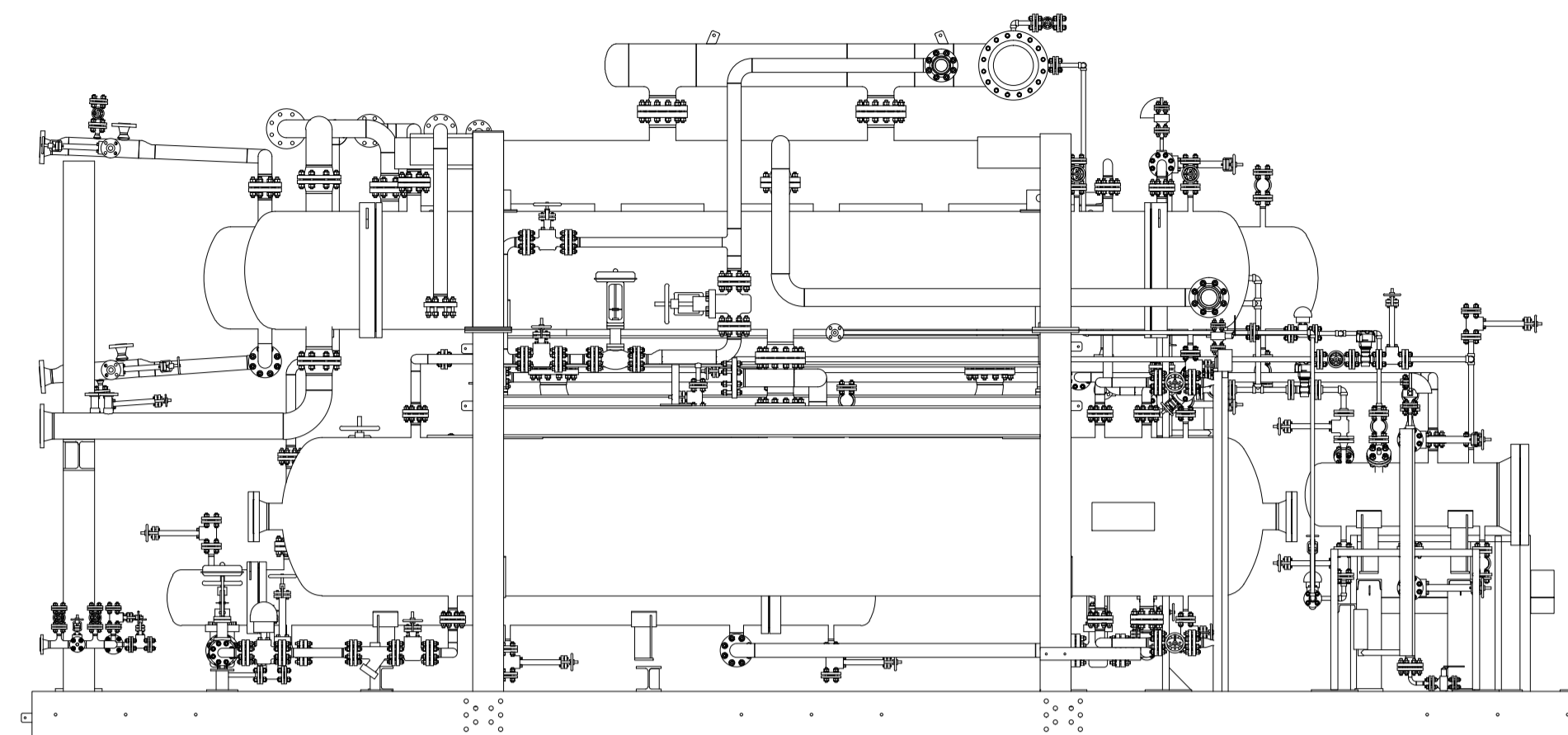
THIS DOCUMENT MUST BE TREATED AS CONFIDENTIAL. IT MUST NOT BE COPIED, DISTRIBUTED TO OTHERS OR ITS CONTENTS BE USED OR COMMUNICATED EITHER IN WHOLE OR IN PART WITHOUT PERMISSION OF MAYEKAWA EUROPE N.V. ALL RIGHTS ARE RESERVED.

Plate type will be used for evaporator and condenser

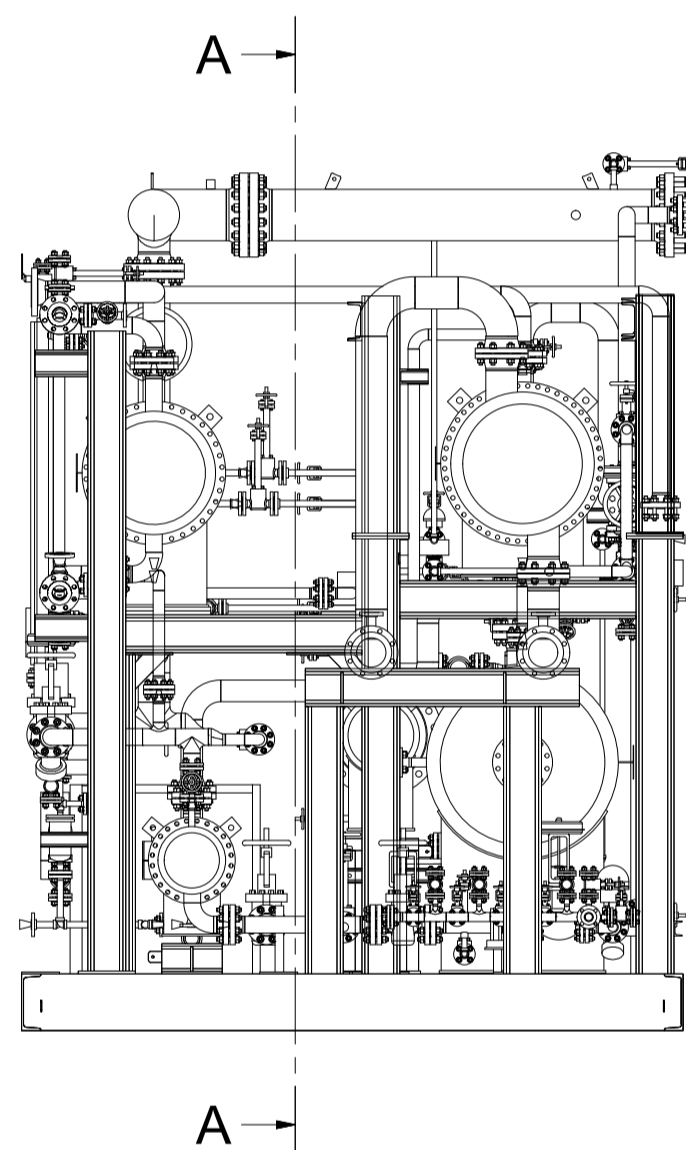
EVAPORATOR SKID  
REAR VIEW - EVAPORATOR & ECONOMISER



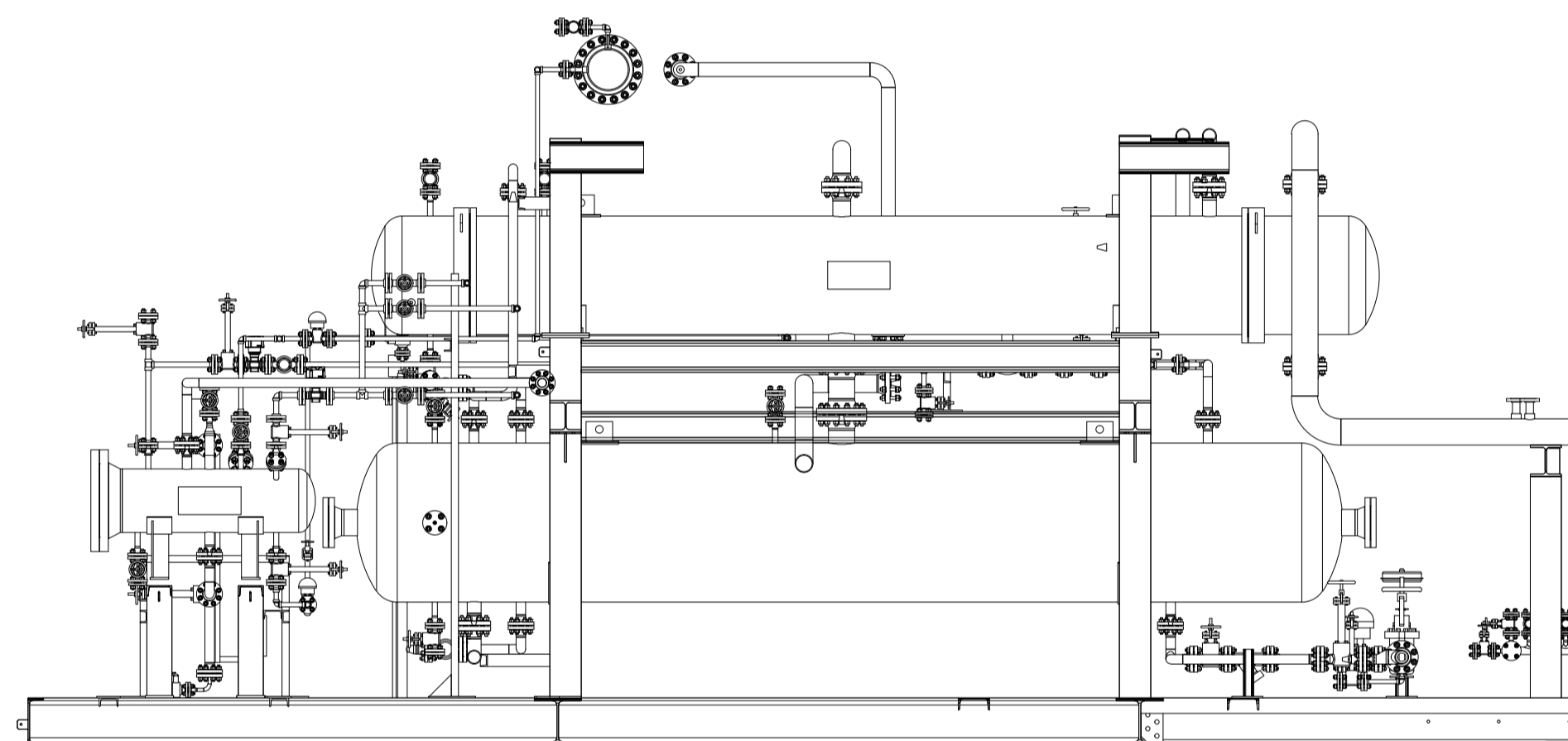
EVAPORATOR SKID  
FRONT VIEW - CONDENSOR & RECEIVER



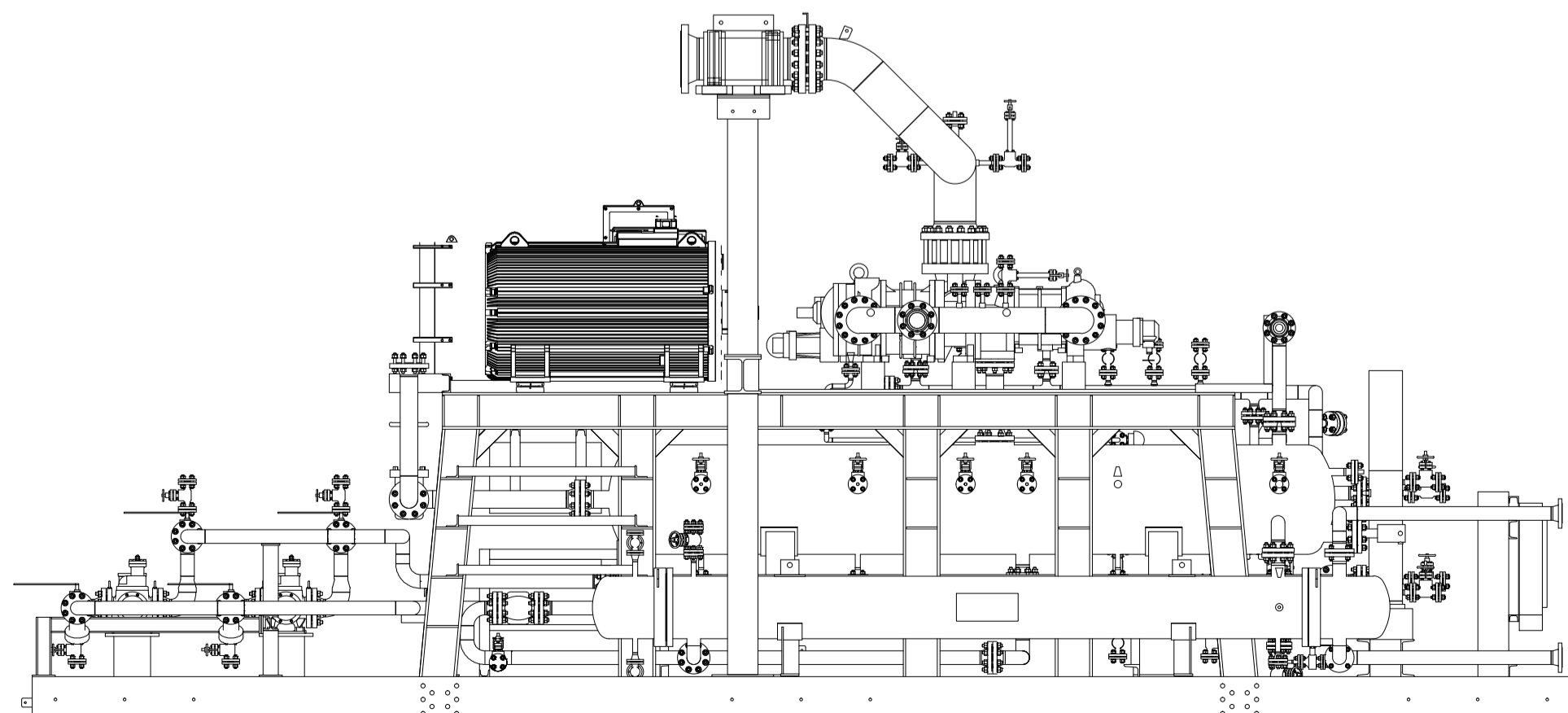
EVAPORATOR SKID  
LEFT VIEW



EVAPORATOR SKID  
SECTION A-A ( 1 : 40 ) CONDENSOR & RECEIVER



COMPRESSOR SKID  
REAR VIEW - OIL COOLER



THIS DOCUMENT MUST BE TREATED AS CONFIDENTIAL. IT MUST NOT BE COPIED, DISTRIBUTED TO OTHERS OR ITS CONTENTS BE USED OR COMMUNICATED EITHER IN WHOLE OR IN PART WITHOUT PERMISSION OF MAYEKAWA EUROPE N.V. ALL RIGHTS ARE RESERVED.

05				26/04/2013
Rev	Description	Drw	App	Date App
Revision table				
		MAYEKAWA EUROPE N.V.		Customer: IRCP / CTCI
		Leuvensesteenweg, 605		Proj. nr.: CAP-10-10-911-14200
www.mayekawa.eu		1930 Zaventem - Belgium		Proj. name: Phoenix 6.1
Status: <b>Work in Progress</b>		Unit general arrangement		
<small>Unit file: 00504-0-ME-UL-10000.dwg Plot file: 99904-0-ME-UL-30000.dwg Cat:</small>		<small>Drawn: XDE 24/04/2013 CHK'd: App'd: Eng:</small>		<small>Size: A1 Sheet: 2 of 2</small>
<small>Unless mentioned, all dimensions in mm Rc = Int. BSPT taper (ISO 7) Rp = Int. BSPT parallel (ISO 7) R = Ext. BSPT (ISO 7)</small>		<small>Scale: 1/40</small>		<small>Doc. number: 060824-0-ME-UL-10000</small>
		<small>Replaces:</small>		<small>Rev: 05</small>