



LIDCO, Pars SEE Zone, Assaluyeh,
Integrated Methanol and Ammonia
Plant 3000 MTPD MeOH / 900 MTPD NH3 PROJECT



General Arrangement Drawing (incl foundation load details)



Document No. 17735-04

Project No.	Vendor Doc.	P.O. No.	Department	Document Type	Serial No	Revision	Page
N278	VD	6019	PR	GAD	0003	01	Page 1 of 3

**Airpack B.V. - Air Compressor –
Integrated Methanol and Ammonia Plant
17735-COM General Arrangement Drawing (incl foundation load
details) (K020)**

REV.	DATE	DESCRIPTION	DRAWN	CHECKED	APPROVED
01	02-01-2024	Issued for Approval	F.T.	S.K.	J.J.

This document has been produced by Contractor for LIDCO. It is confidential and cannot be disclosed to or used by any third party for any purpose without prior written consent.

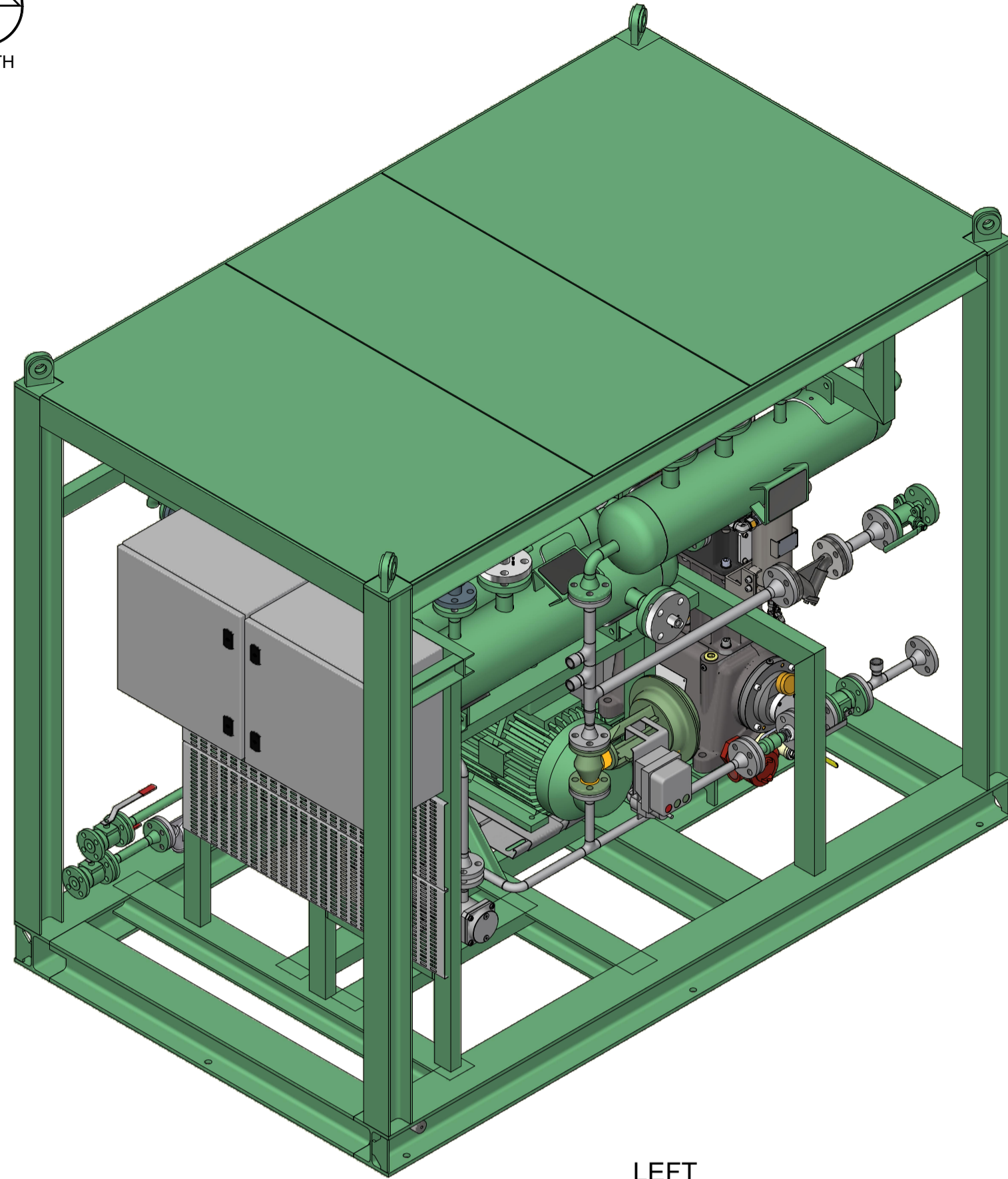
General Arrangement Drawing (incl foundation load details)

Document No. 17735-04

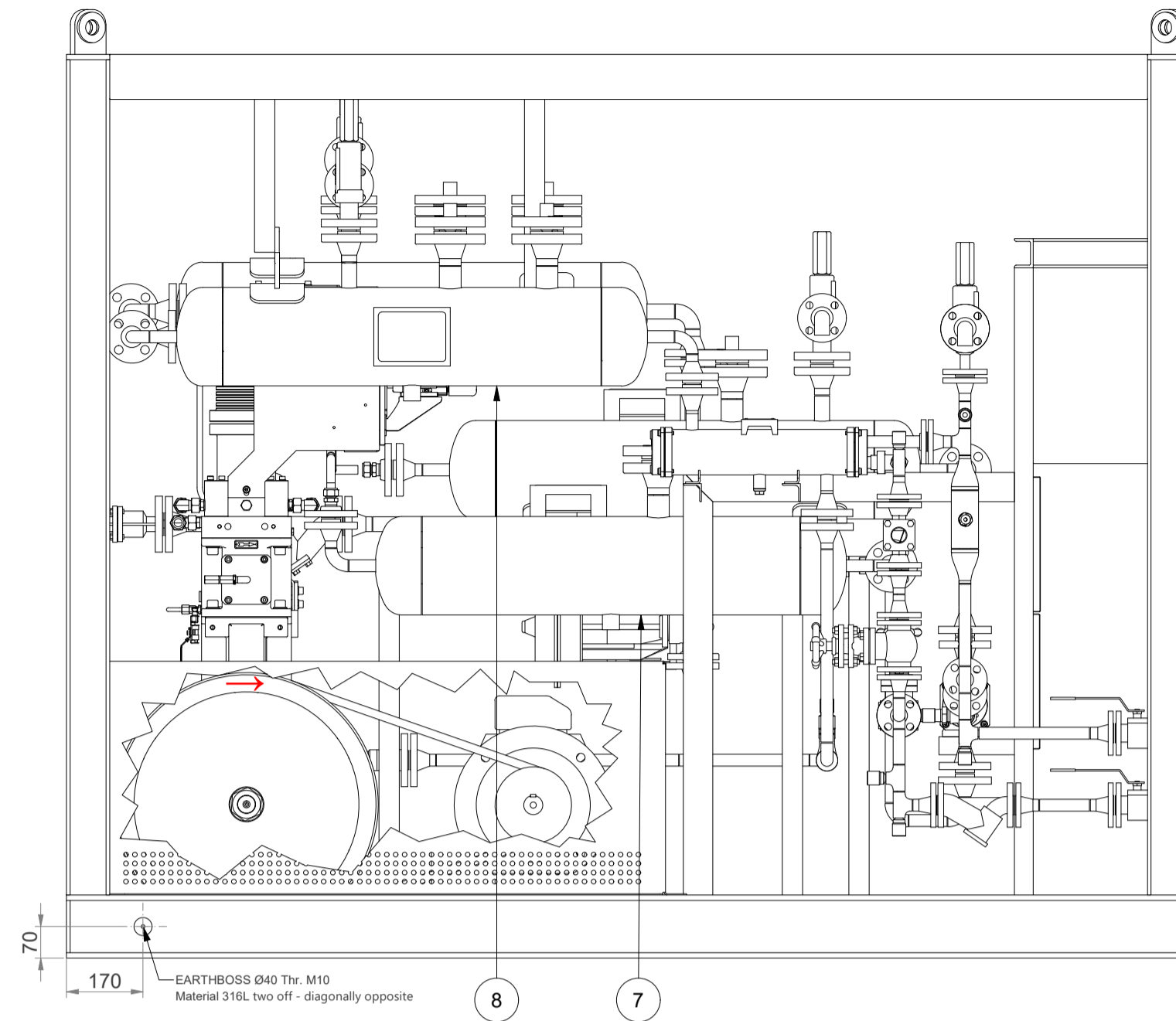
Project No.	Vendor Doc.	P.O. No.	Department	Document Type	Serial No	Revision	Page
N278	VD	6019	PR	GAD	0003	01	Page 2 of 3

LIST OF REVISED PAGES

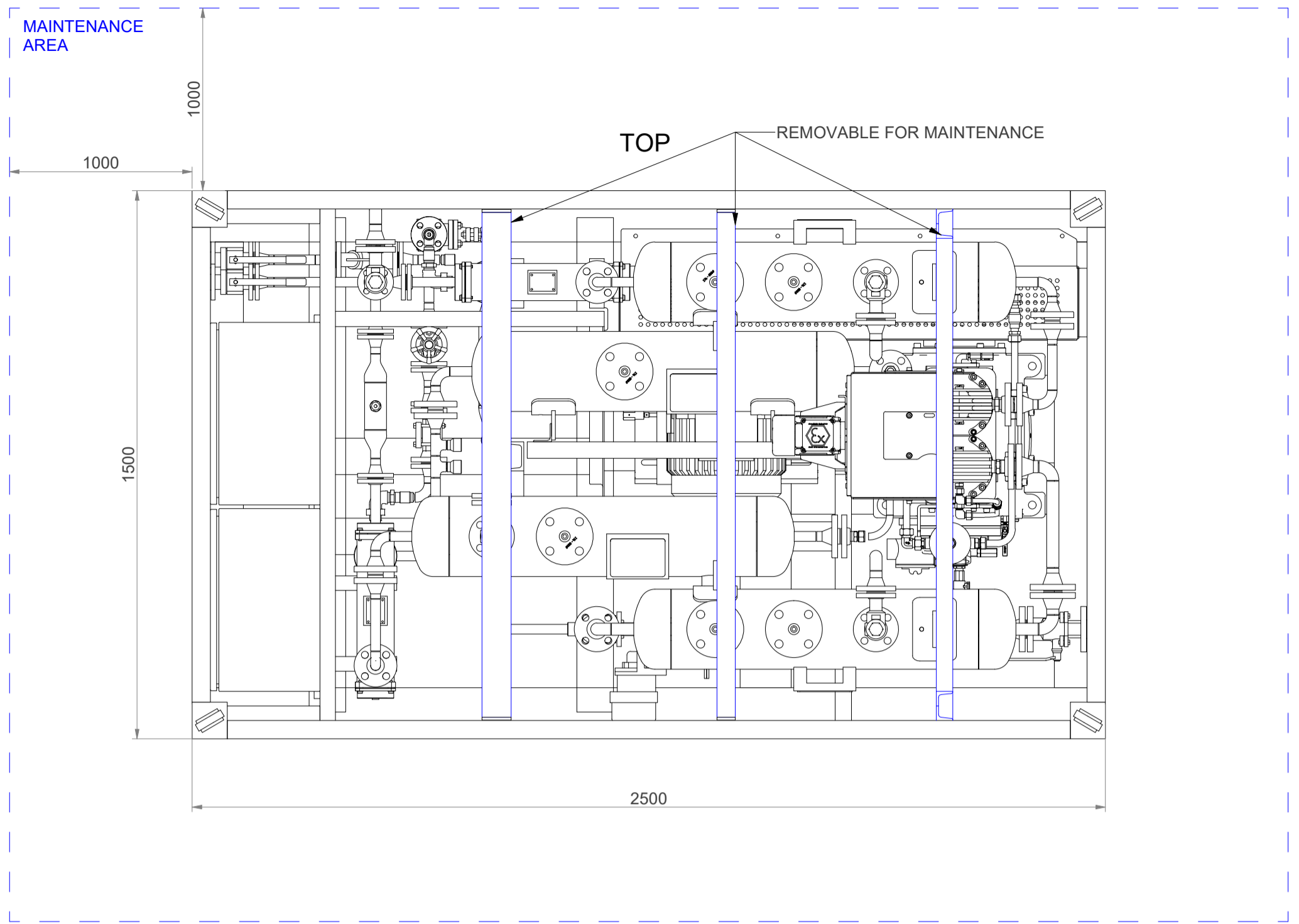
Rev. Page	01	02	03	04	05	Rev. Page	01	02	03	04	05	Rev. Page	01	02	03	04	05	Rev. Page	01	02	03	04	05
1	X					26						51						76					
2	X					27						52						77					
3	X					28						53						78					
4						29						54						79					
5						30						55						80					
6						31						56						81					
7						32						57						82					
8						33						58						83					
9						34						59						84					
10						35						60						85					
11						36						61						86					
12						37						62						87					
13						38						63						88					
14						39						64						89					
15						40						65						90					
16						41						66						91					
17						42						67						92					
18						43						68						ATTACHMENT					
19						44						69						1					
20						45						70						2					
21						46						71						3					
22						47						72						4					
23						48						73						5					
24						49						74						6					
25						50						75						7					



BACK



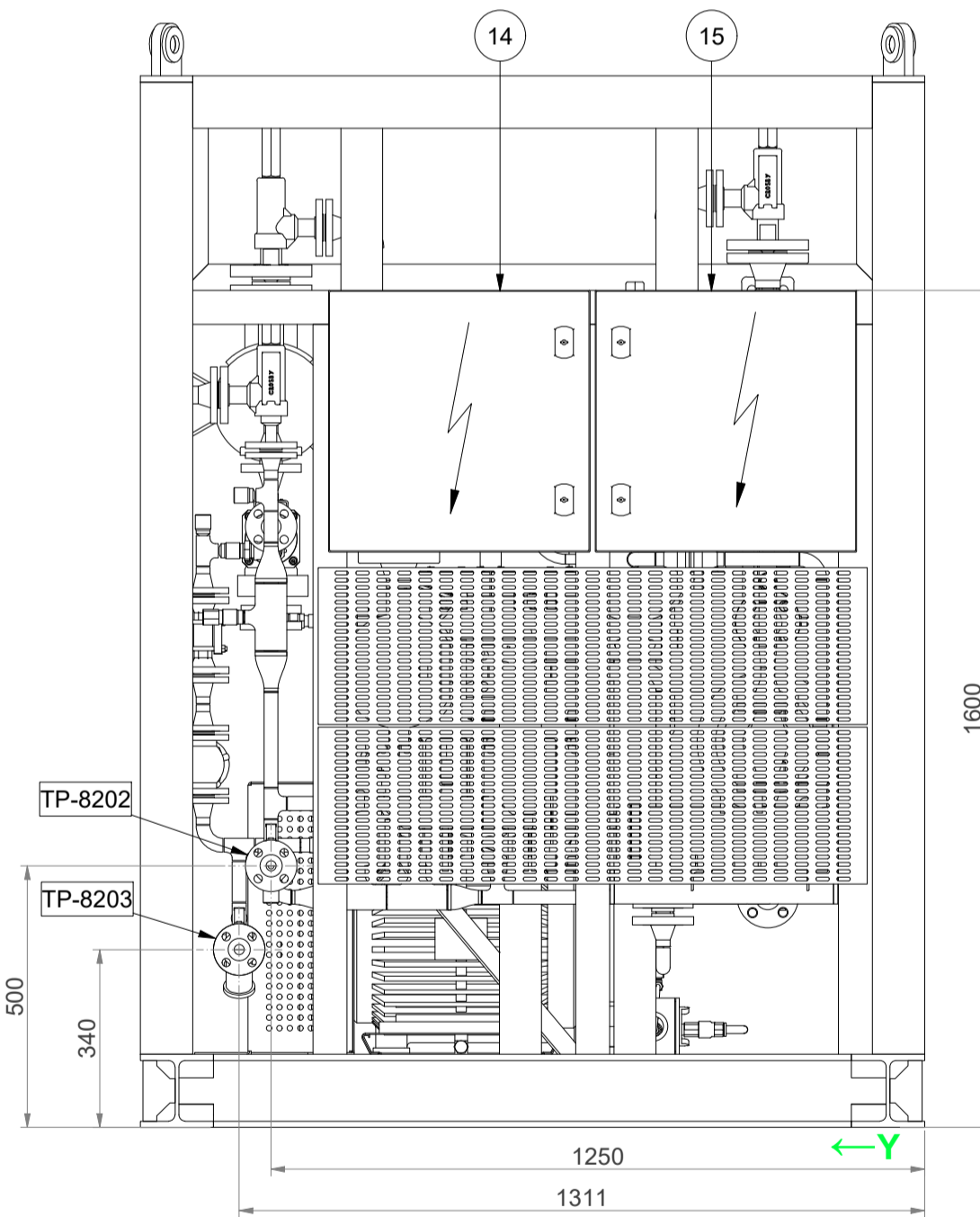
MAINTENANCE AREA



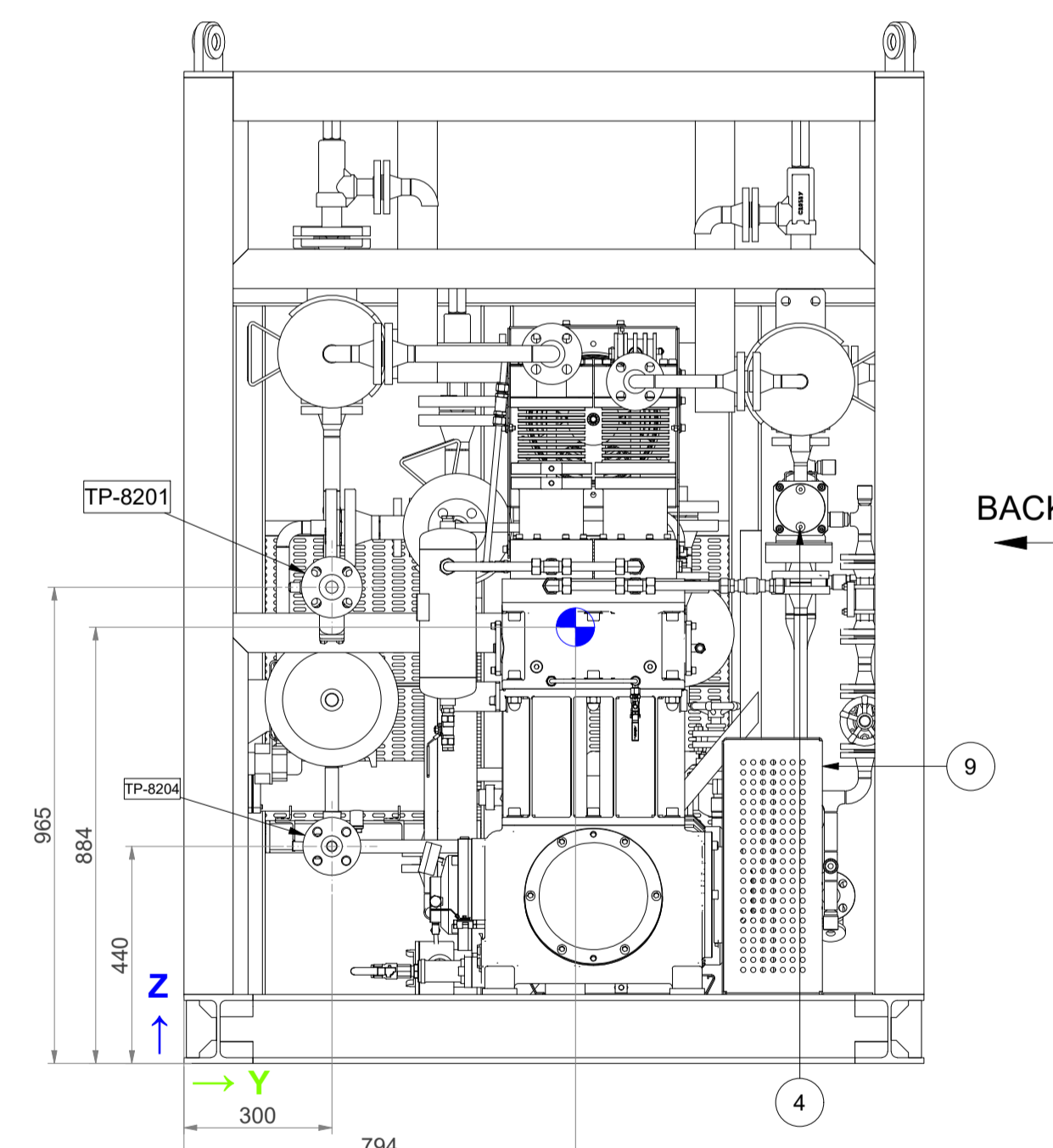
TOP

FRONT

LEFT



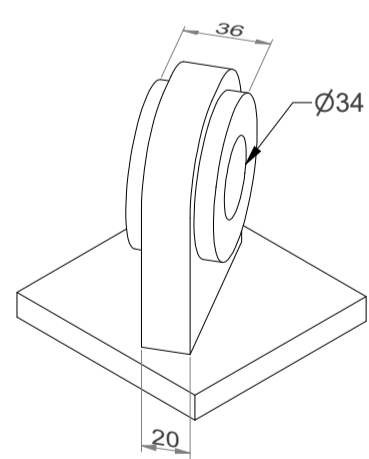
RIGHT



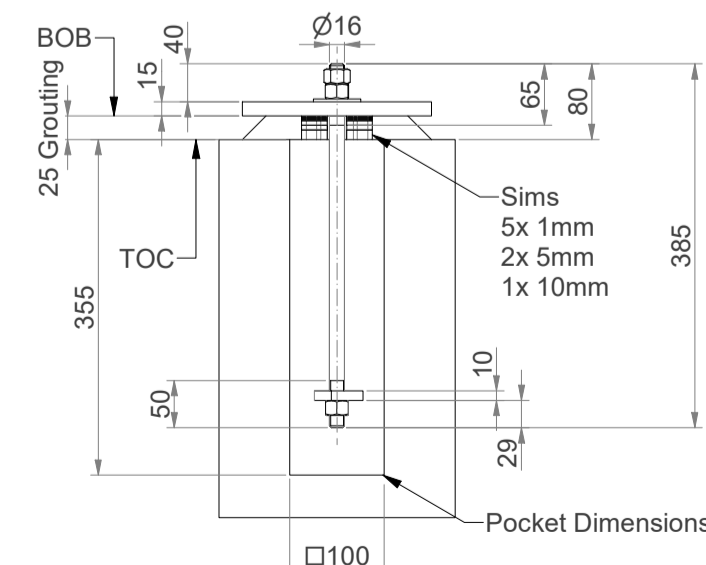
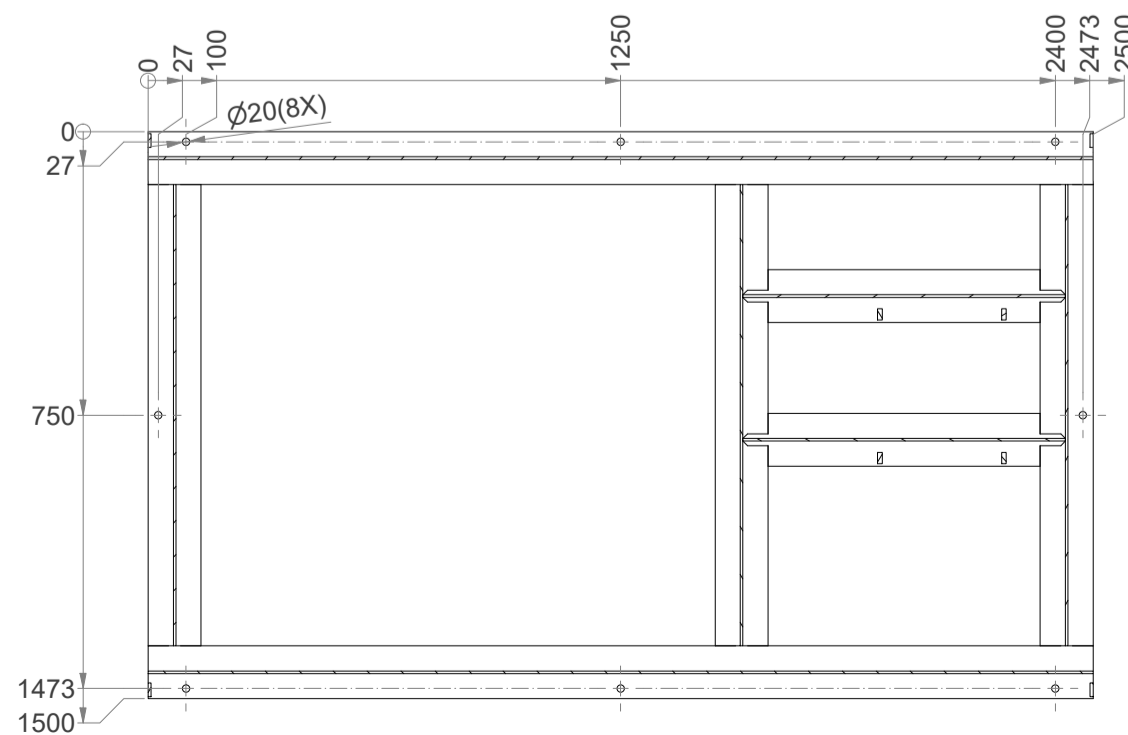
BACK

LIFTING LUG DETAIL

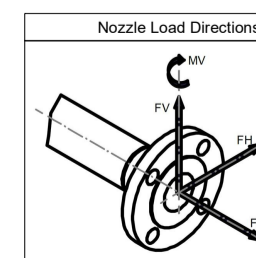
4x lifting lug can be used for single point lifting
Minimum sling angle = 60° from horizontal



C-C / FOUNDATION LAYOUT



- Notes on foundation details:
- 8x T.EN/ISO 8.8 19 MnB4.16.80.305 Anchor bolts acc.: N278-000-ST-JSC-1700-003-REV-03
 - Skid will be supported on 25mm thk non-shrink cementitious grout
 - No dynamic forces is envisaged on foundation or dynamic forces are negligible
 - No filling of concrete inside the skid is required



Tie in Points Max. External Allowable Nozzle Loads from outside Package

TP	Size	Nozzle Data	FH (+/-)	FV (+/-)	FA (+/-)	MH (+/-)	MA (+/-)	MV (+/-)	Pos. X (mm)	Pos. Y (mm)	Pos. Z (mm)
TP-8201	1" 300# RF B16.5	Nitrogen Inlet	1	1	1	0.3	1	0.3	2450	300	965
TP-8204	3/4" 300# RF B16.5	Nitrogen Outlet	1	1	1	0.3	1	0.3	2450	300	440
TP-8203	3/4" 150# RF B16.5	Cooling water inlet	1	1	1	0.3	1	0.3	50	1311	340
TP-8202	3/4" 150# RF B16.5	Cooling water outlet	1	1	1	0.3	1	0.3	50	1250	500

Main Items			
Nr.	Item	Tag nr.	Remarks
1.	Compressor	K-020	Model: RBV-130
2.	Main Motor	K-020	11 kW/1485rpm
3.	Inter Cooler	KE-020-001	
4.	After Cooler	KE-020-002	
5.	Pulsation Damper Inlet	KV-020-001	Suction side
6.	Pulsation Damper 1st	KV-020-002	Discharge side
7.	Pulsation Damper 2nd	KV-020-003	Suction side
8.	Pulsation Damper 2nd	KV-020-003	Discharge side
9.	Coupling / Guard		
10.	Lube Oil Pump		
11.	Sump		
12.	Oil space heater	KH-020-001	
13.	Fan Motor	KM-020-001	11 kW
14.	Local Pushbutton Station	320-LPS-8201	
15.	Junction Box	320-JB-8201	

CALCULATED WEIGHT DATA (kg)	
Skid dry weight	: 2700
Skid operational weight	: 2750
Maintenance weight	: 320 (main e-motor)

Client	Tolerances acc. to:	MODIFICATIONS	REV.	DATE	DRAWN	ACC.
Lavan Industry Development Company (LIDCO)	ISO-2768-1 (v)			28-12-2023		
Client Ref: K-020 Integrated Methanol and Ammonia Plant		Date			FVT	
Client Doc. No: N-278-VD-6019-PR-GAD-0003-01		PAID REV. No.: 04			SK	
		Checked by			Plant Location	Onshore
		Scale			Airpack Ref.	17735-COM
		URL: http://www.airpack.nl			Drawing No.	17735-04

