






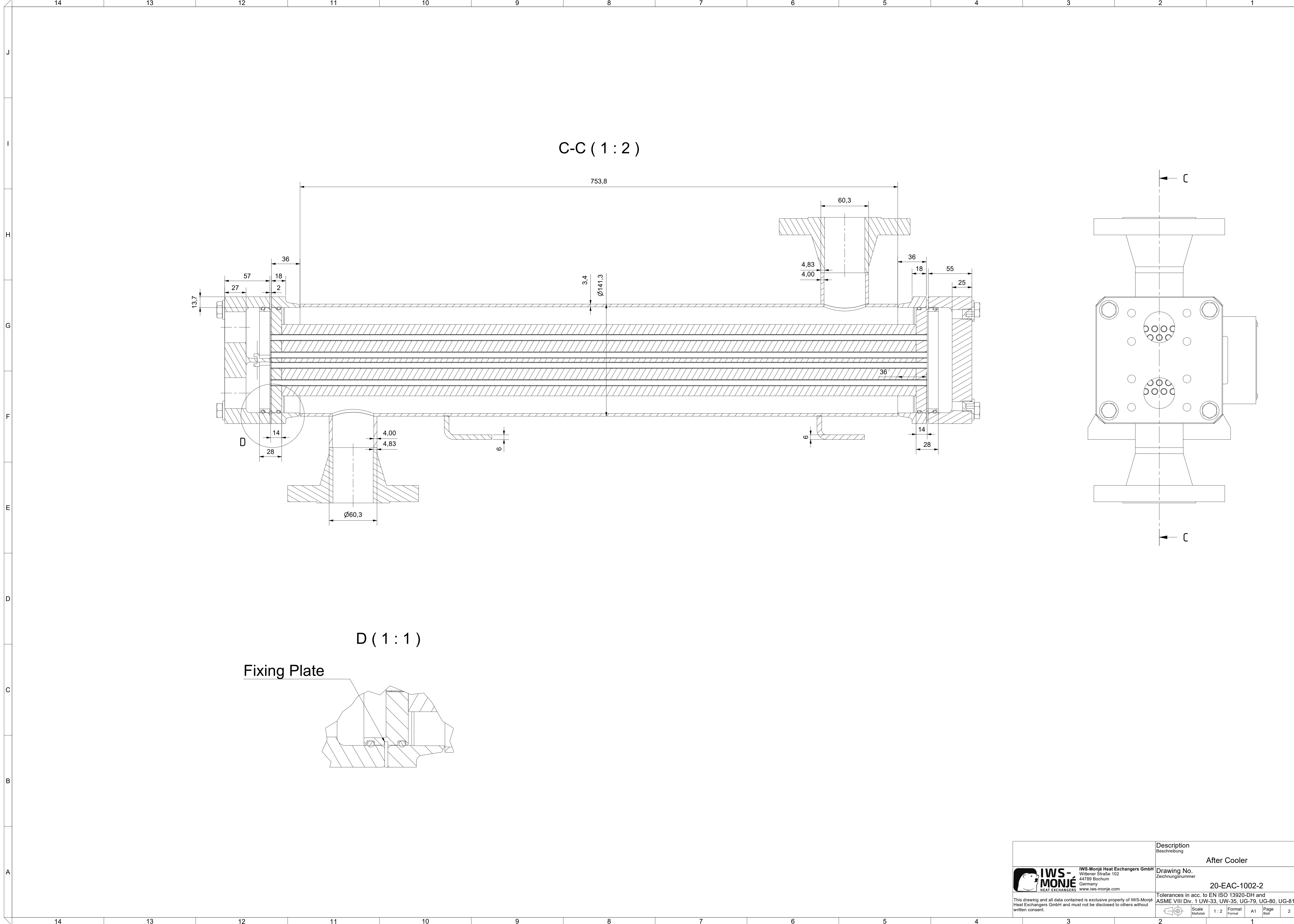


OWNER:  شرکت سست و سویی گستره ایران (سهامی عامه)	BUSHEHR PETROCHEMICAL COMPANY MEG PLANT						EPC CONTRACTOR:  Chagalesh-Enerechimi-Steam Joint Venture BUPC-MEG PLANT PROJECT		
	AFTER COOLER DETAIL DRAWING FOR NITROGEN GAS BOOSTER								
MC :									
Owner Document Number: 17811-23A	Project	Area	Phase	Unit	Dis.	Doc.	Seq.	Rev.:	Page
	BU	20	VD	303	ME	DWG	0018	02	1 of 8

AFTER COOLER DETAIL DRAWING FOR NITROGEN GAS BOOSTER

 شرکت سست و سویی گستره ایران توسعه نیروگاهی	 Chagalesh-Enerechimi-Steam Joint Venture BUPC-MEG PLANT PROJECT	BUSHEHR PETROCHEMICAL COMPANY MEG PLANT
Document Review		
Issue Purpose:	AFC	
Result Code: AP,AN,CM,RE,NC	AP	
Next Status : IFC,IFA,IFI,AFC,AB	AB	
Responsible Department	MECHANICAL	
Commented Date	Mar/10/2022	
Approval or review hereunder shall not be construed to relieve Vendor / Subcontractor of his responsibilities and liability under the contract.		

02	21/02/2022	Approved for Construction	KP	LdM	JR	
01	07/02/2022	For approval	KP	LdM	JR	
00	06/12/2021	For approval	KP	LdM	JR	
Rev.	Date	Purpose of Issue	Prepared	Checked	Approved	AC Code
					Class: 1	Phase: P



C-C (1:2)

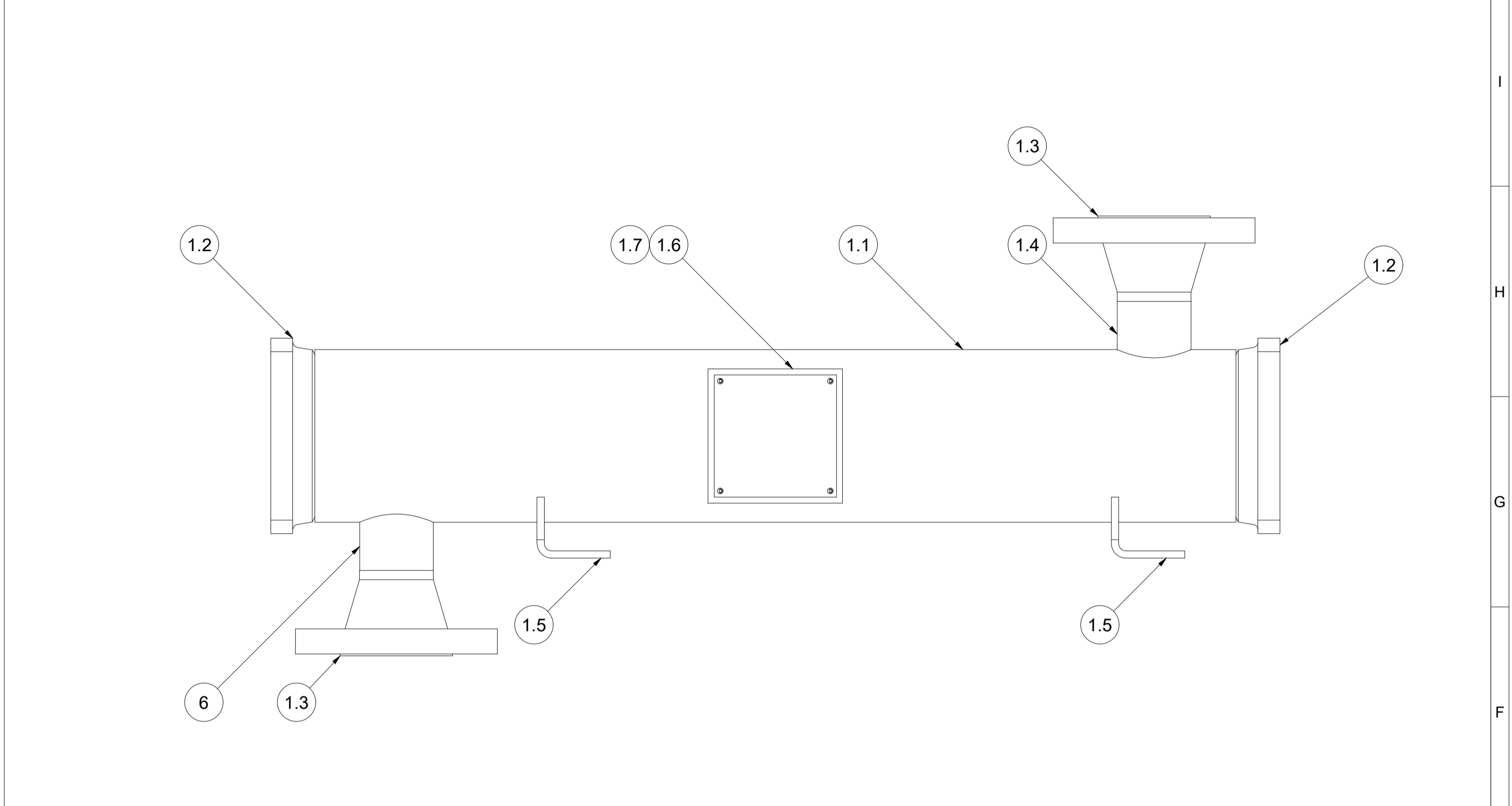
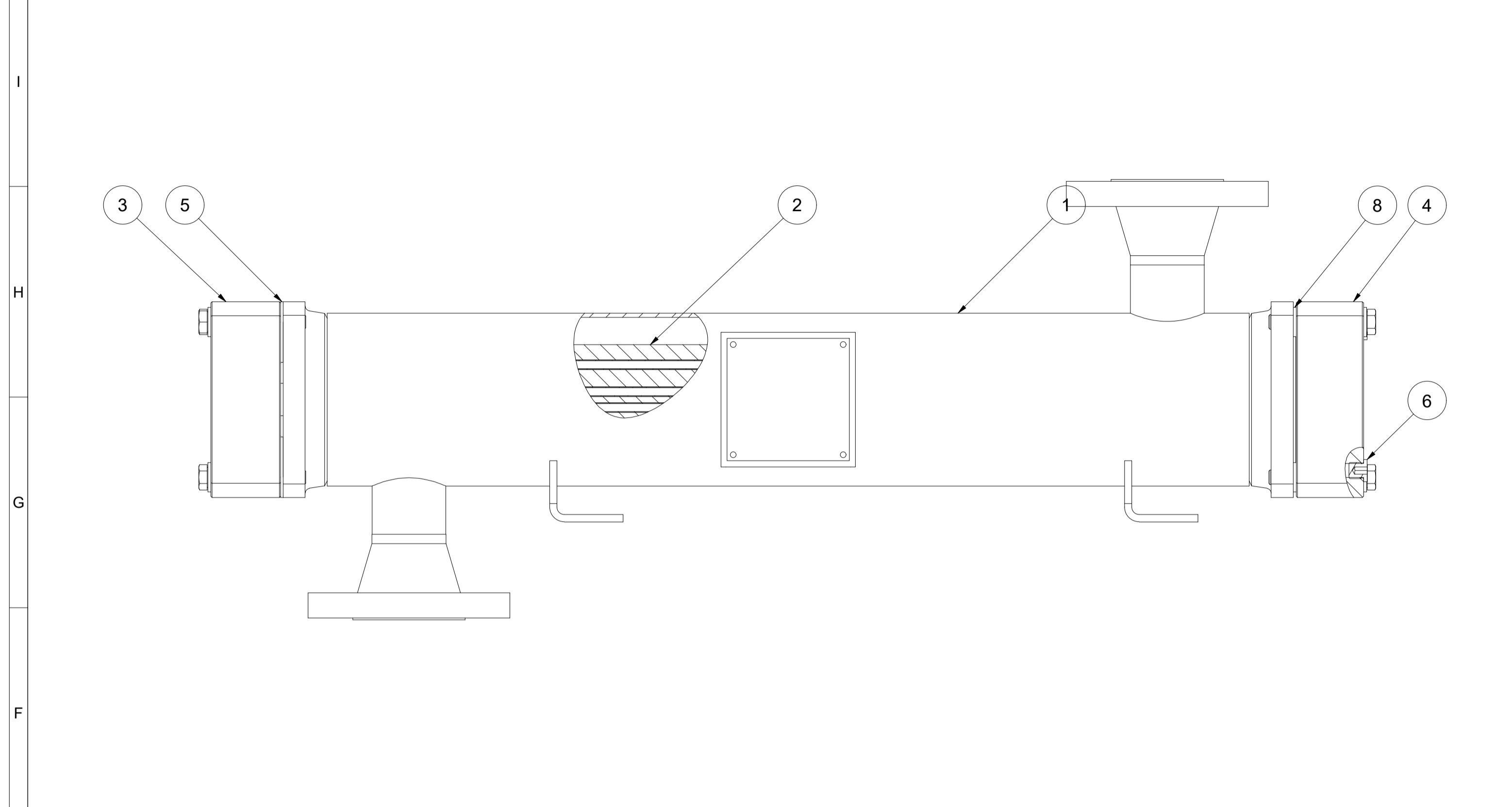
D (1:1)

Fixing Plate

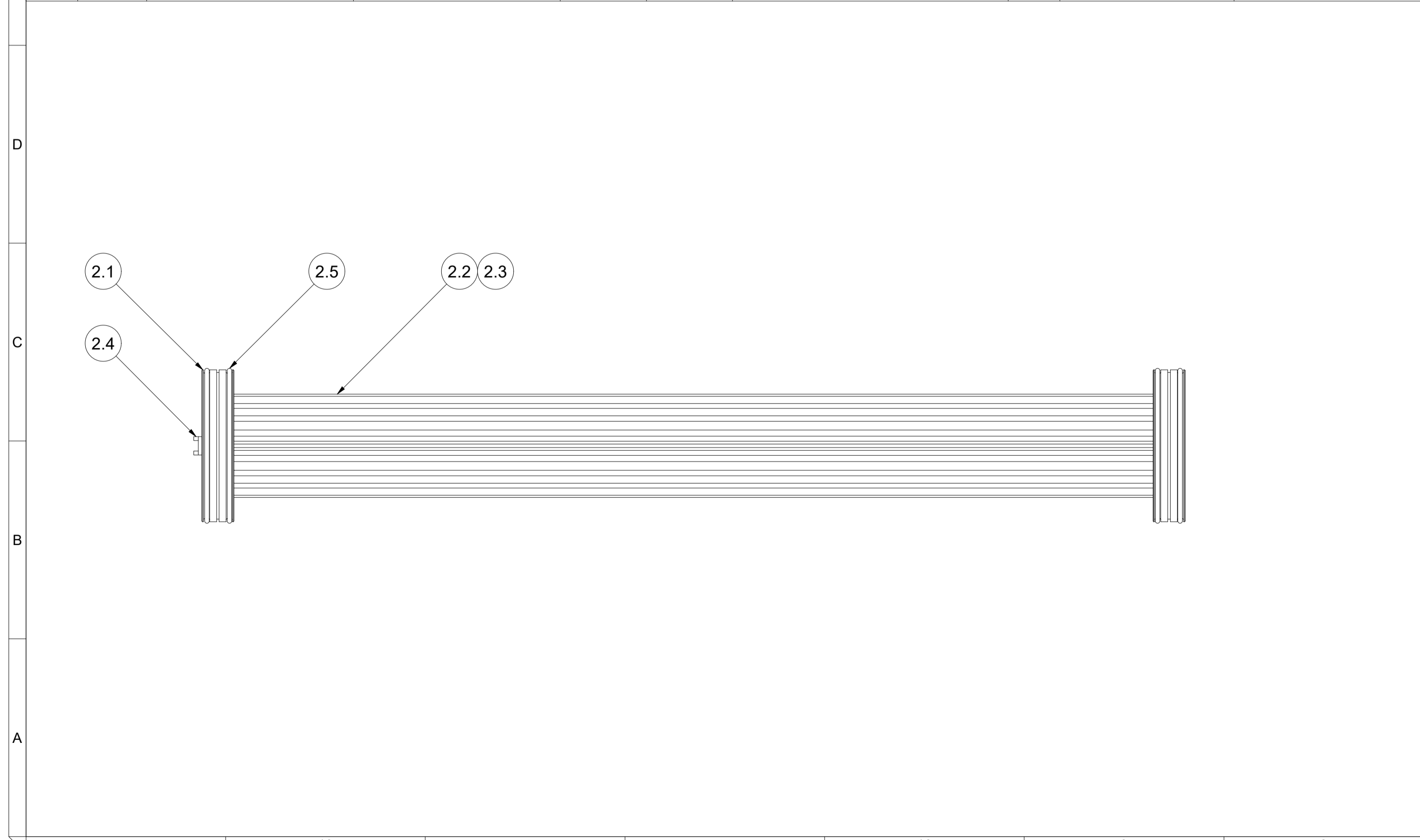
<p>IWS-MONJÉ HEAT EXCHANGERS</p>	<p>IWS-Monjé Heat Exchangers GmbH Wittener Straße 102 44789 Bochum Germany www.iws-monje.com</p>	<p>Description Beschreibung After Cooler</p>
	<p>Drawing No. Zeichnungsnummer 20-EAC-1002-2</p>	<p>Tolerances in acc. to EN ISO 13920-DH and ASME VIII Div. 1 UW-33, UW-35, UG-79, UG-80, UG-81</p>
<p>This drawing and all data contained is exclusive property of IWS-Monjé Heat Exchangers GmbH and must not be disclosed to others without written consent.</p>	<p>Scale Maßstab 1:2</p>	<p>Format Format A1</p>
	<p>Page Blatt 2</p>	

14	13	12	11	10	9	8			
Pos.	Qty. / Menge	Description	Bezeichnung	Material / Werkstoff	Norm	Dimensions / Abmessungen	Cert. / Zgn.	Rules / Regelwerk	Notes / Bemerkungen
1	1	Shell Assembly	Mantelbaugruppe	-	-	-	-	-	-
2	1	Bundle Assembly	Bündelbaugruppe	-	-	-	-	-	-
3	1	Front End Cover	Abdeckung Vorne	CS	-	-	3.1	-	-
4	1	Back End Cover	Abdeckung Hinten	CS	-	-	3.1	-	-
5	4	Fixing Plate	Fixierplatte	304	-	-	-	-	-
6	2	Sealing Plug	Verschlusschraube	304	-	G 1/4"	-	-	-
7	8	Bolt	Schraube	A4-70	-	M12 x 80	-	-	-
8	12	Washer	Scheibe	A4	-	Ø13mm	-	-	-

7	6	5	4	3	2	1			
Pos.	Qty. / Menge	Description	Bezeichnung	Material / Werkstoff	Norm	Dimensions / Abmessungen	Cert. / Zgn.	Rules / Regelwerk	Notes / Bemerkungen
1.1	1	Shell	Mantel	TP316	SA-312	Ø141,3mm x 3,4mm	3.1	-	-
1.2	2	Flange Ring	Flanschring	F316	SA-182	KL12	3.1	-	-
1.3	2	Welding Neck Flange	Vorschweißflansch	F316	SA-182	2" - Class 300 - RF	3.1	ASME B16.5	-
1.4	2	Nozzle Pipe	Stutzenrohr	TP316	SA-312	Ø60,3mm x 4mm	3.1	-	-
1.5	2	Foot	Fuß	304	SA-240	t=6	-	-	-
1.6	1	Nameplate Holder	Typenschildhalter	304	SA-240	-	-	-	-
1.7	1	Nameplate	Typenschild	304	SA-240	-	-	-	-

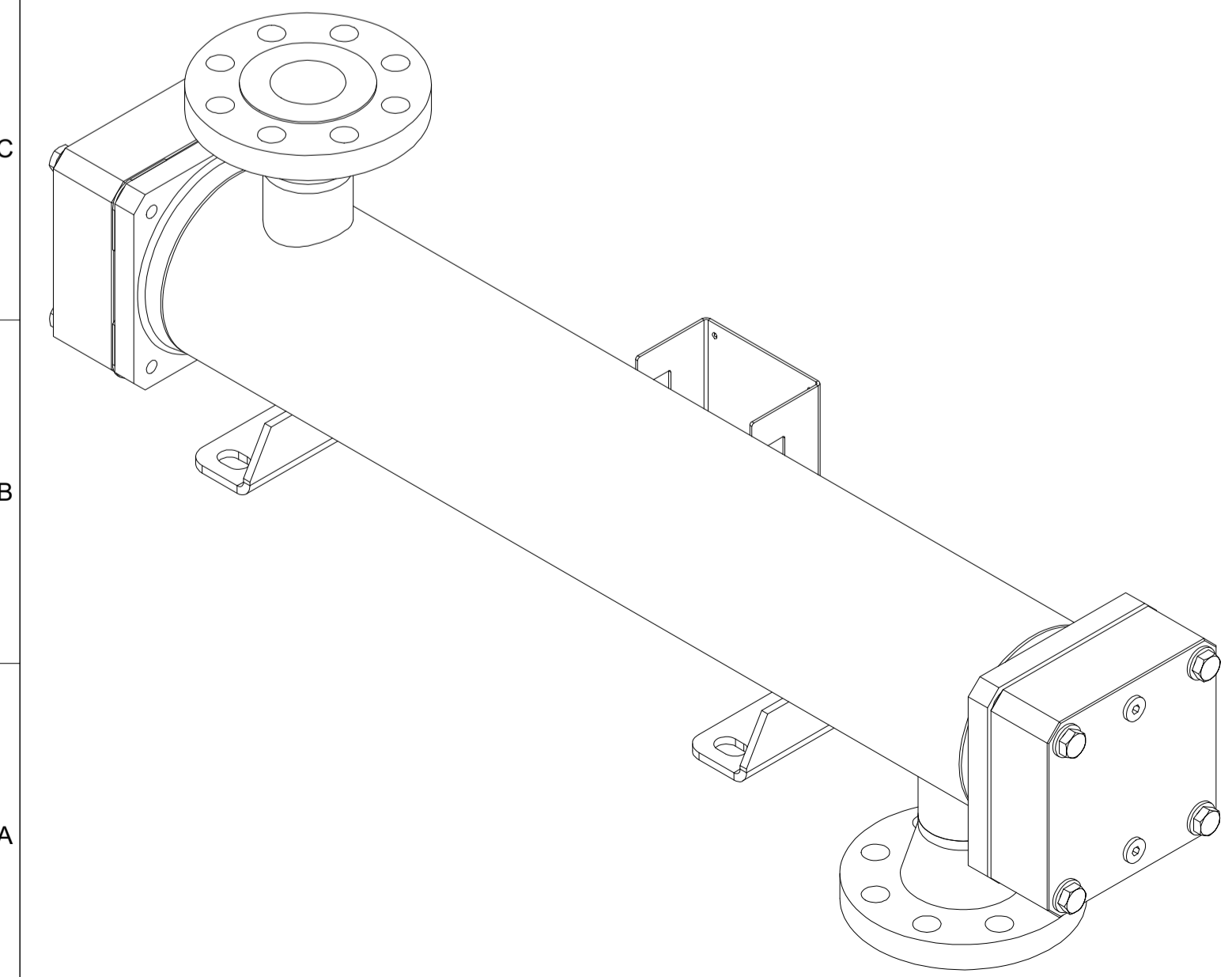
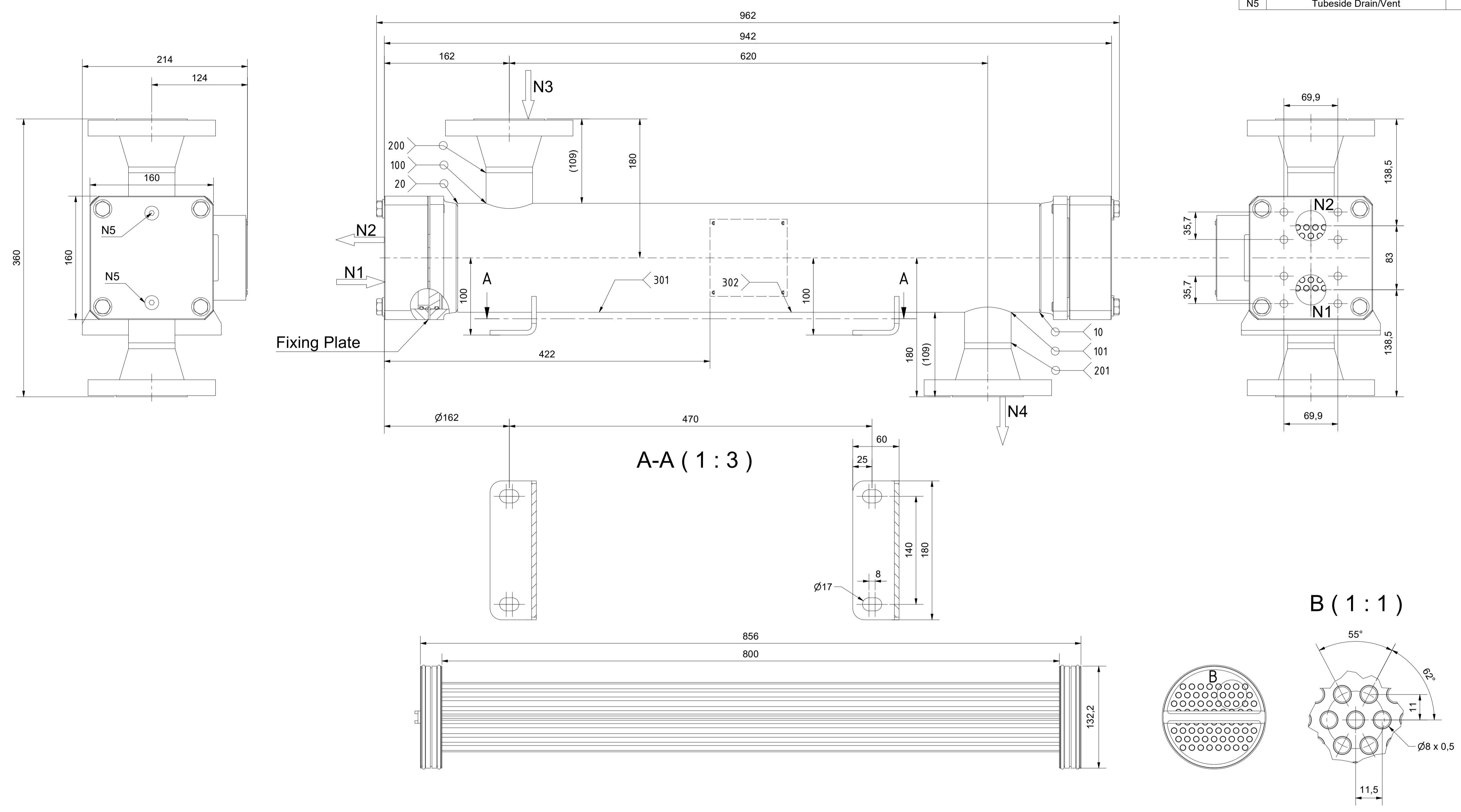


Pos.	Qty. / Menge	Description	Bezeichnung	Material / Werkstoff	Norm	Dimensions / Abmessungen	Cert. / Zgn.	Rules / Regelwerk	Notes / Bemerkungen
2.1	2	Tubesheet	Rohrplatte	Brass	-	-	3.1	-	-
2.2		Fin	Lamelle	Aluminium	-	-	-	-	-
2.3	72	Tube	Rohr	CuNi10	-	-	3.1	-	-
2.4	1	Separator Gasket	Trennstegdichtung	PE1000	-	-	-	-	-
2.5	4	O-Ring	O-Ring	Viton	-	-	-	-	-



		IWS-Monjé Heat Exchangers GmbH Wittener Straße 102 44789 Bochum Germany www.iws-monje.com		Description Beschreibung After Cooler	
This drawing and all data contained is exclusive property of IWS-Monjé Heat Exchangers GmbH and must not be disclosed to others without written consent.		Drawing No. Zeichnungsnummer 20-EAC-1002-2		ASME VIII Div. 1 UW-33, UW-35, UG-79, UG-80, UG-81 Tolerances in accordance to EN ISO 13920-DH and	
Scale	1:3	Format	A1	Page	3

Nozzle Table / Stutzentabelle		
No. / Nr.	Function / Funktion	Size / Größe
N1	Tubeside In	SAE 1 1/2" - 3000PSI
N2	Tubeside Out	SAE 1 1/2" - 3000PSI
N3	Shellside In	ASME B16.5 - 2" - Class 300 - RF - s=4,83mm
N4	Shellside Out	ASME B16.5 - 2" - Class 300 - RF - s=4,83mm
N5	Tubeside Drain/Vent	G 1/4"



Job Information	
Job No. Auftrags Nr.	21-11-67
Serial No. Serien Nr.	211167-1
IWS Project No. IWS Projekt Nr.	104213658
IWS Item No. IWS Artikel Nr.	704212651_A
Customer Tag No. Kunden Erkennungs Nr.	17811-CC-0001
Design Parameters	
Mech. Design Code Konstruktionsvorschrift	ASME VIII Div.1 - ed. 2019
TEMA Class/Type	Type BEW
	Tubeside Shellside
	Rohrseite Mantel­seite
Design Pressure (MAWP) Max. zul. Druck (MAWP) / (PS)	-1/10bar(g) -1/25bar(g)
Test Pressure (PT) Prüfdruck	15bar(g) 37,5bar(g)
Design Temperature (AT) Zul. Betriebstemperatur (AT) / (TS)	-10/95°C -10/210°C
Volume (V) Volumen	2,9L 7,6L
Corrosion Allowance Korrosionszuschlag	0mm 0mm
Certification / Registration	
	Zertifizierung / Registrierung
<input checked="" type="checkbox"/> ASME VIII Div. 1	U-Stamp No
	NB Registration No
Nondestructive Testing (NDT)	
	Zerstörungsfreie Prüfungen (ZfP)
Radiographic Testing Durchstrahlungsprüfung	Acc. to design code
Penetrant Test/Magn. Particle Test. Oberflächenrisssprüfung	none
Delta Ferrite Testing Delta Ferritprüfung	none
Ultrasonic Testing Ultraschallprüfung	none
Corresponding Documents	
	Zugehörige Dokumente
Strength Calculation Festigkeitsberechnung	BK12-3102
Weld- and Test Plan Schweiß- und Prüfplan	SK12-3102
Parts List Stückliste	Page 3

IWS-Monjé
www.iws-monje.com

Kd.-Id. - Nr: 17811-CC-0001
IWS-Id. Nr: 704212651_A

Manufactured by: 901050003
Hersteller

No Serie: 211167-1	Built: 2022
Seriennr.	Baujahr

PS	-1/10	-1/25	bar(g)
V	2,9	7,6	L
TS	-10/95	-10/210	°C
PT	15	37,5	bar(g)
Fluidgroup	-	-	Fluidgruppe

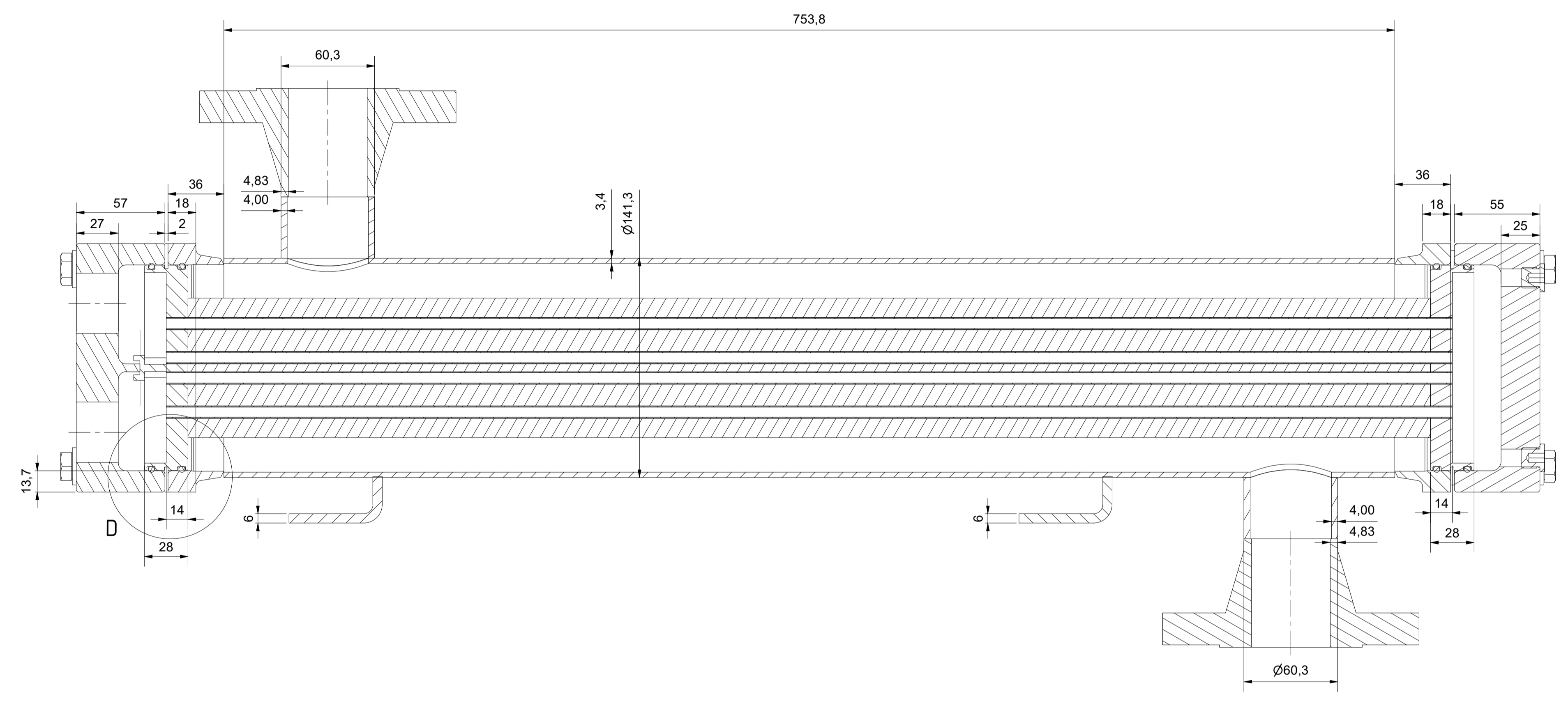
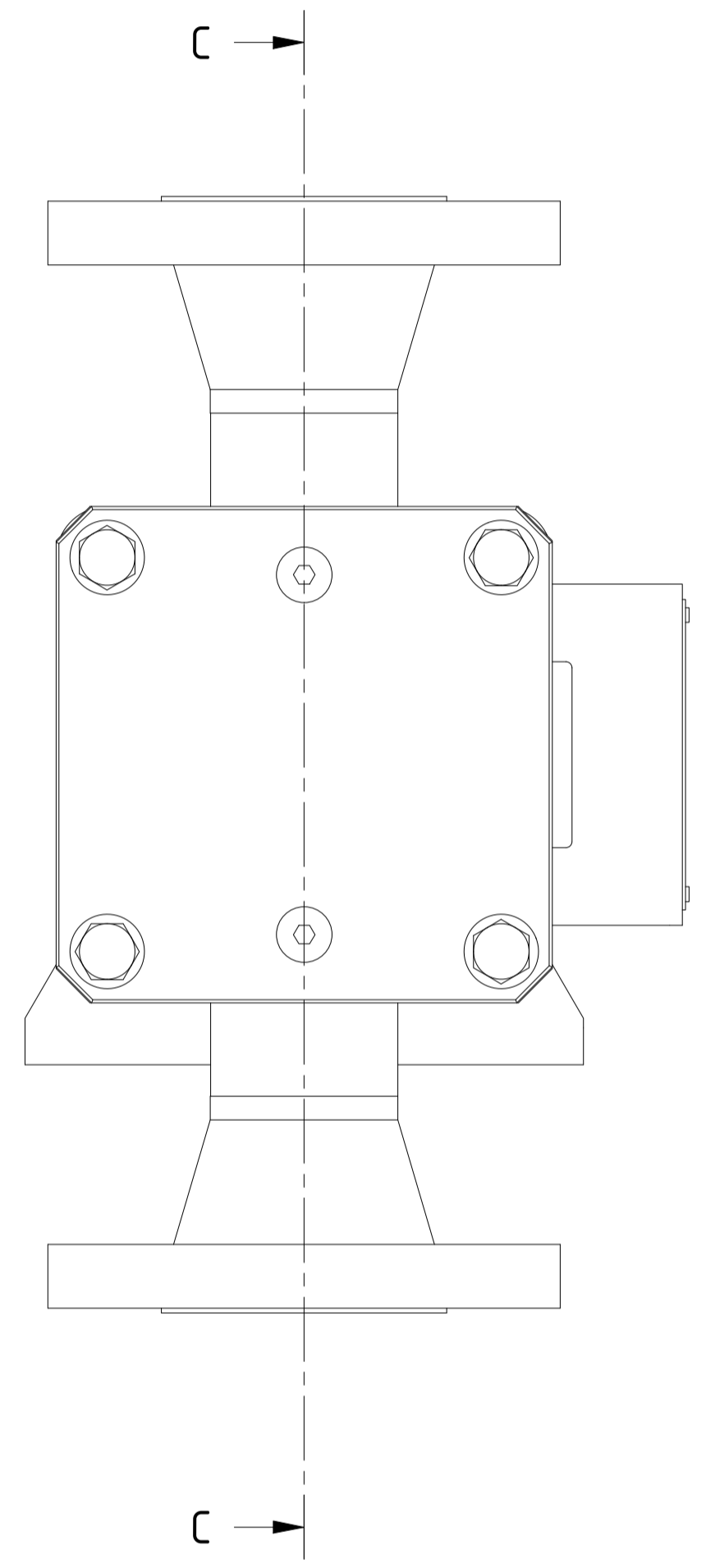
Type / Typ: RLP 800/140-72-2-0/1-CuNi/AL-IW

General Information			
			Surface Treatment Shell Oberflächenbehandlung Gehäuse pickled and passivated
R01	Changes acc. to customer requests	02.02.2022	K.Kraft Surface Treatment Header RAL 7001 - Zarcosin coated inner surface
Rev.	Changes Änderungen	Date Datum	Name Name
			Empty Weight Leergewicht ca.38,4 kg
			Description Beschreibung
			Inter Cooler
			Drawing No. Zeichnungsnummer 20-EAC-1002-1
			Tolerances in acc. to EN ISO 13920-DH and ASME VIII Div. 1 UW-33, UW-35, UG-79, UG-80, UG-81
			This drawing and all data contained is exclusive property of IWS-Monjé Heat Exchangers GmbH and must not be disclosed to others without written consent.
	Scale Maßstab 1:3	Format Format A1	Page Blatt 1

14 13 12 11 10 9 8 7 6 5 4 3 2 1

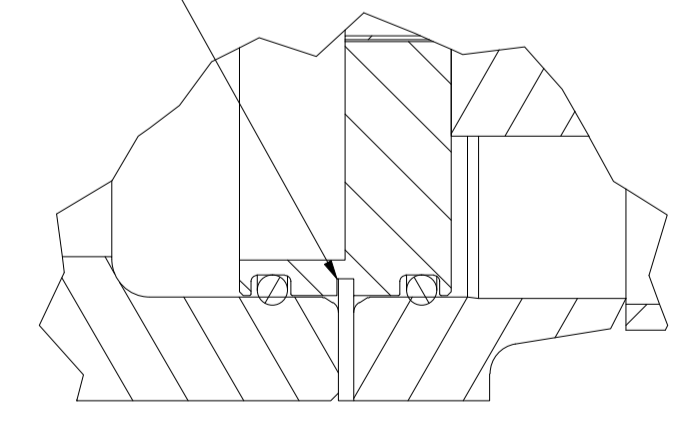
J I H G F E D C B A


C-C (1:2)



D (1:1)

Fixing Plate

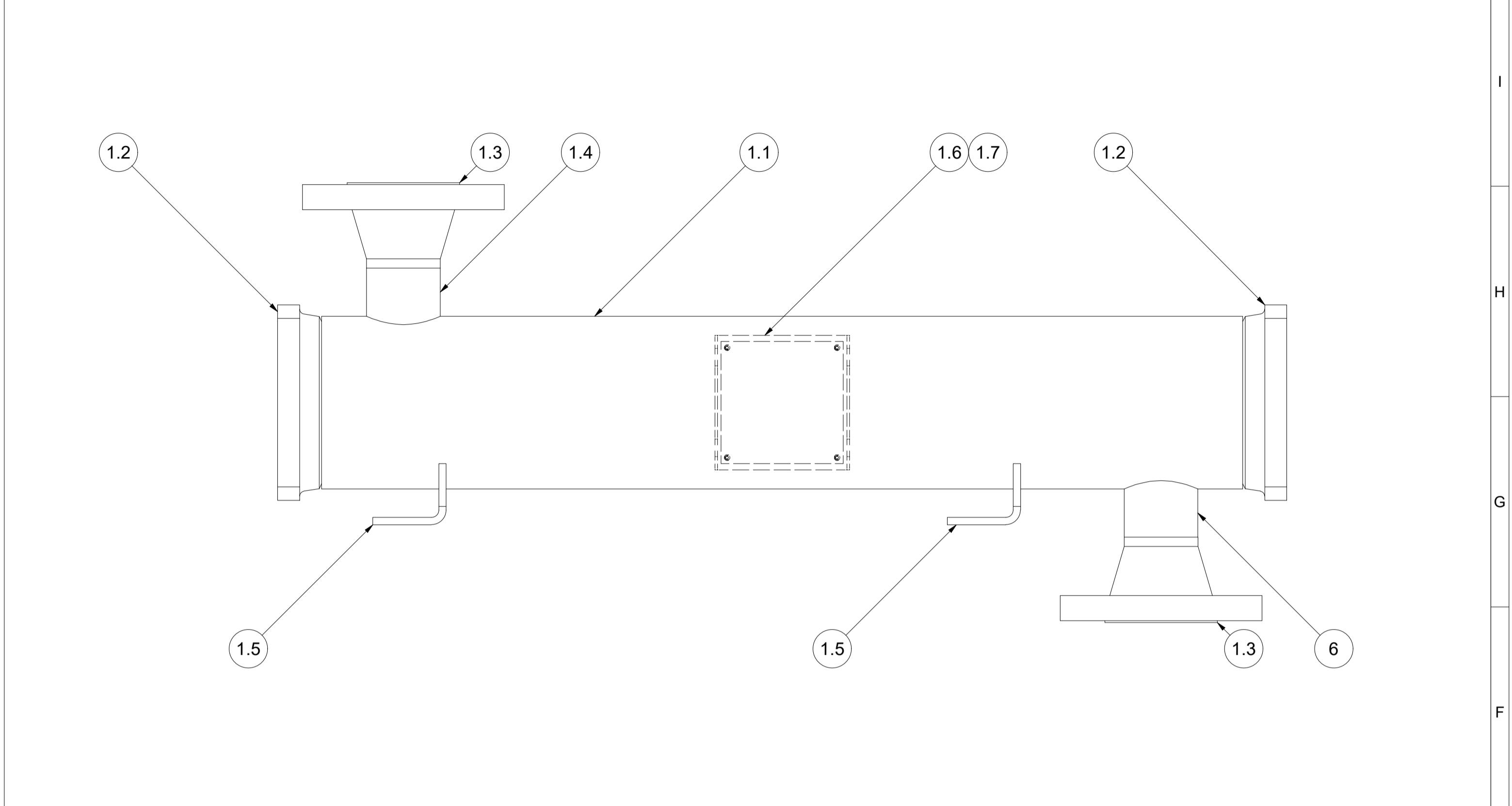
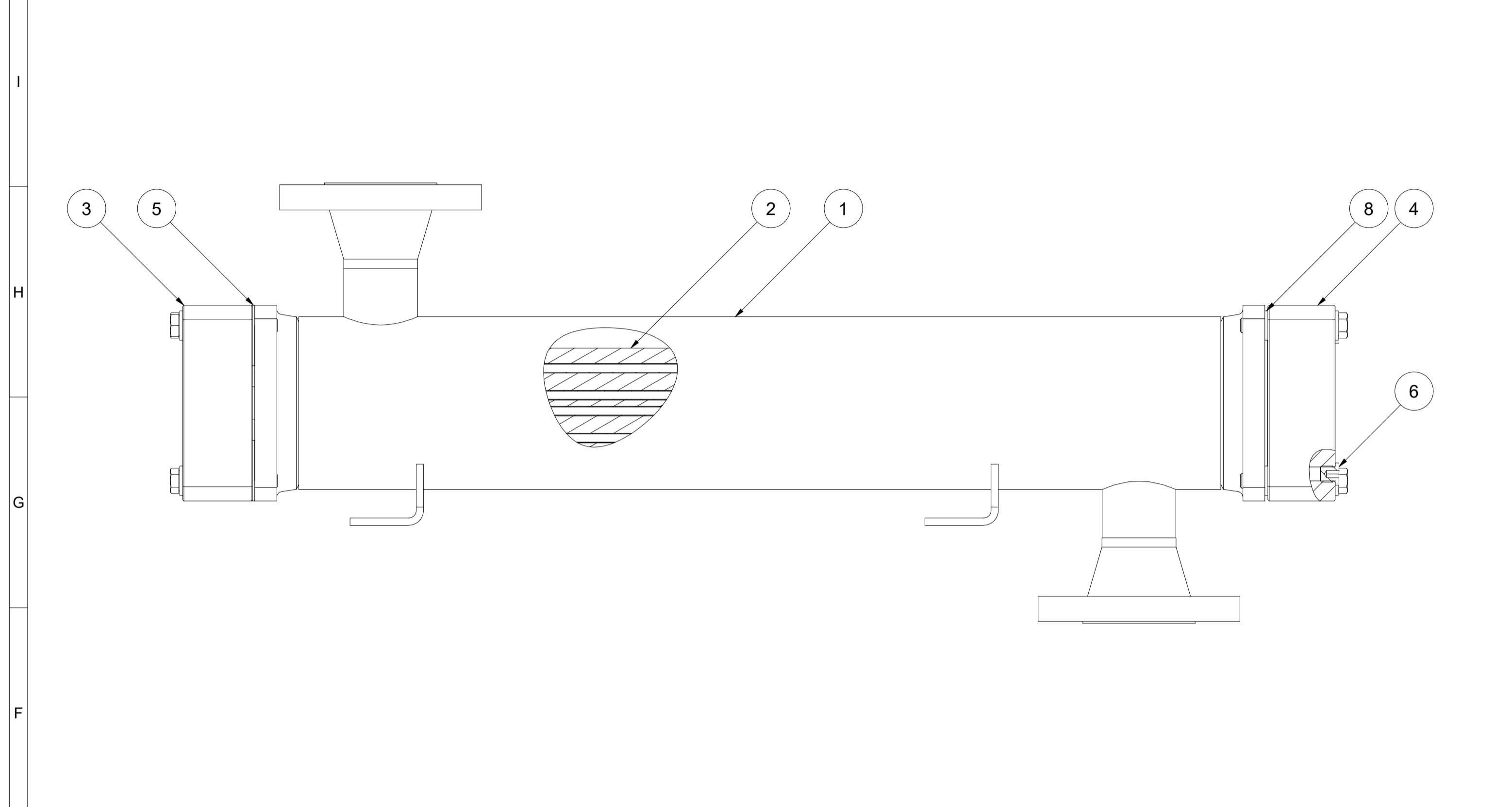


 IWS-MONJE <small>HEAT EXCHANGERS</small>	IWS-Monje Heat Exchangers GmbH Wittener Straße 102 44789 Bochum Germany www.iws-monje.com	Description Beschreibung Inter Cooler
	Drawing No. Zeichnungsnummer 20-EAC-1002-1	ASME VIII Div. 1 UW-33, UW-35, UG-79, UG-80, UG-81 Tolerances in acc. to EN ISO 13920-DH and Scale 1:2 Format A1 Page 2

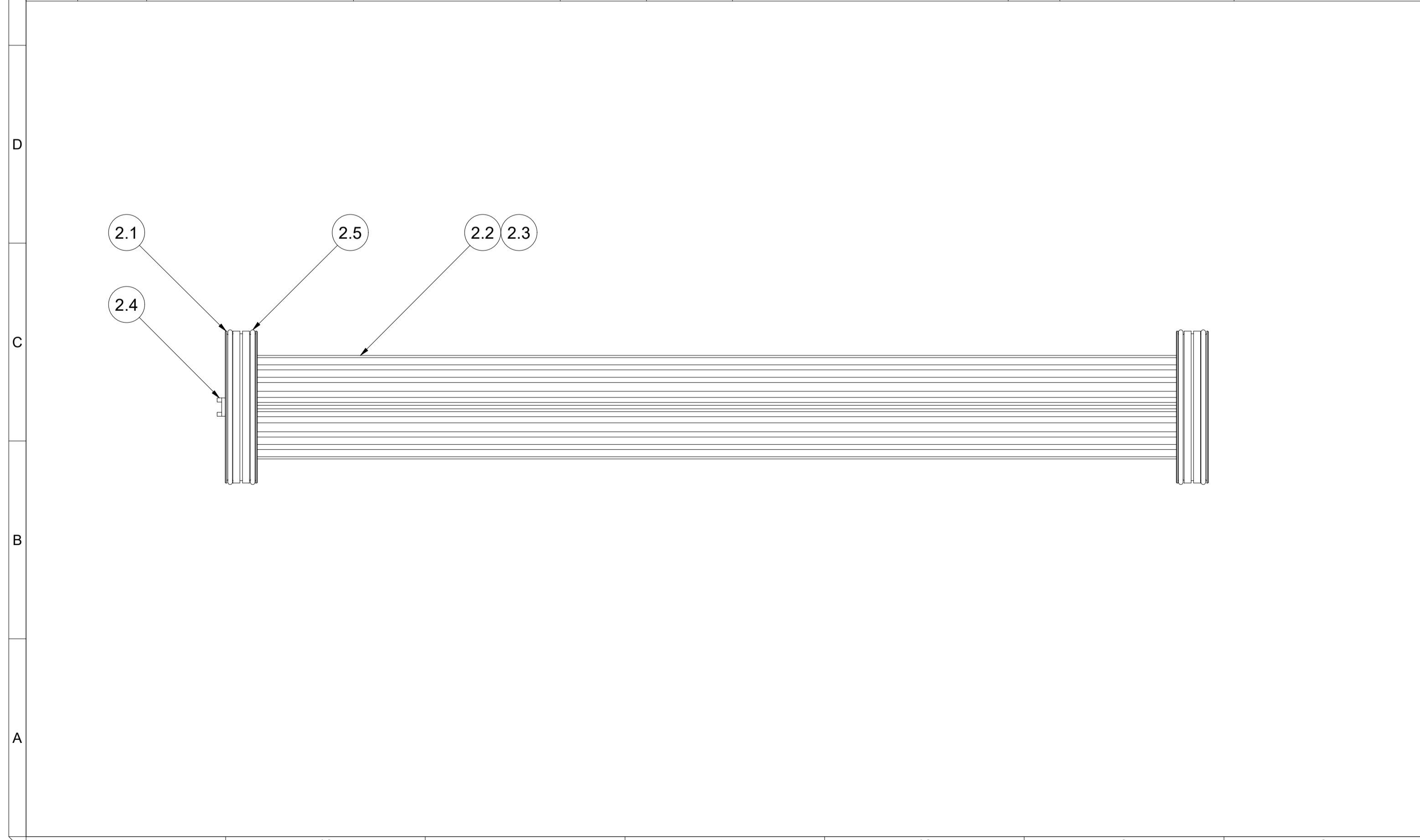
14 13 12 11 10 9 8 7 6 5 4 3 2 1

Pos.	Qty. / Menge	Description	Bezeichnung	Material / Werkstoff	Norm	Dimensions / Abmessungen	Cert. / Zgn.	Rules / Regelwerk	Notes / Bemerkungen
1	1	Shell Assembly	Mantelbaugruppe	-	-	-	-	-	-
2	1	Bundle Assembly	Bündelbaugruppe	-	-	-	-	-	-
3	1	Front End Cover	Abdeckung Vorne	CS	3.1	-	-	-	-
4	1	Back End Cover	Abdeckung Hinten	CS	3.1	-	-	-	-
5	4	Fixing Plate	Fixierplatte	304	-	-	-	-	-
6	2	Sealing Plug	Verschlusschraube	304	-	G 1/4"	-	-	-
7	8	Bolt	Schraube	A4-70	-	M12 x 80	-	-	-
8	12	Washer	Scheibe	A4	-	Ø13mm	-	-	-

Pos.	Qty. / Menge	Description	Bezeichnung	Material / Werkstoff	Norm	Dimensions / Abmessungen	Cert. / Zgn.	Rules / Regelwerk	Notes / Bemerkungen
1.1	1	Shell	Mantel	TP316	SA-312	Ø141,3mm x 3,4mm	3.1	-	-
1.2	2	Flange Ring	Flanschring	F316	SA-182	KL12	3.1	-	-
1.3	2	Welding Neck Flange	Vorschweißflansch	F316	SA-182	2" - Class 300 - RF	3.1	ASME B16.5	-
1.4	2	Nozzle Pipe	Stutzenrohr	TP316	SA-312	Ø60,3mm x 4mm	3.1	-	-
1.5	2	Foot	Fuß	304	SA-240	t=6	-	-	-
1.6	1	Nameplate Holder	Typenschildhalter	304	SA-240	-	-	-	-
1.7	1	Nameplate	Typenschild	304	SA-240	-	-	-	-



Pos.	Qty. / Menge	Description	Bezeichnung	Material / Werkstoff	Norm	Dimensions / Abmessungen	Cert. / Zgn.	Rules / Regelwerk	Notes / Bemerkungen
2.1	2	Tubesheet	Rohrplatte	Brass	-	-	3.1	-	-
2.2		Fin	Lamelle	Aluminium	-	-	-	-	-
2.3	72	Tube	Rohr	CuNi10	-	-	3.1	-	-
2.4	1	Separator Gasket	Trennstegdichtung	PE1000	-	-	-	-	-
2.5	4	O-Ring	O-Ring	Viton	-	-	-	-	-



		IWS-Monjé Heat Exchangers GmbH Wittener Straße 102 44789 Bochum Germany www.iws-monje.com		Description Beschreibung Inter Cooler	
This drawing and all data contained is exclusive property of IWS-Monjé Heat Exchangers GmbH and must not be disclosed to others without written consent.		Drawing No. Zeichnungsnummer 20-EAC-1002-1		ASME VIII Div. 1 UW-33, UW-35, UG-79, UG-80, UG-81 Tolerances in acc. to EN ISO 13920-DH and Scale 1:3 Format A1 Page 3	