

OWNER



**BUSHEHR PETROCHEMICAL COMPANY
MEG PLANT**

EPC CONTRACTOR:



MC :



شرکت نفت و سویی
توسعه ایرانیان

**P&ID
for reciprocating compressor**

COMPRESSOR PACKAGE P & ID







Owner Document Number: 17811-03	Project	Area	Phase	Unit	Dis.	Doc.	Seq.	Contract No : 52-98/445	
	Rev.:	Page							
BU	20	VD	303	PR	DWG	0013	00	1 of 6	

COMPRESSOR PACKAGE P & ID

**P&ID
for reciprocating compressor**

00	04/12/2020	For approval	KP	KP	PW			
00	30/10/2020	For approval	KP	KP	PW			
Rev.	Date	Purpose of Issue	Prepared	Checked	Approved	AC Code		
							Class: 1	Phase: 1p

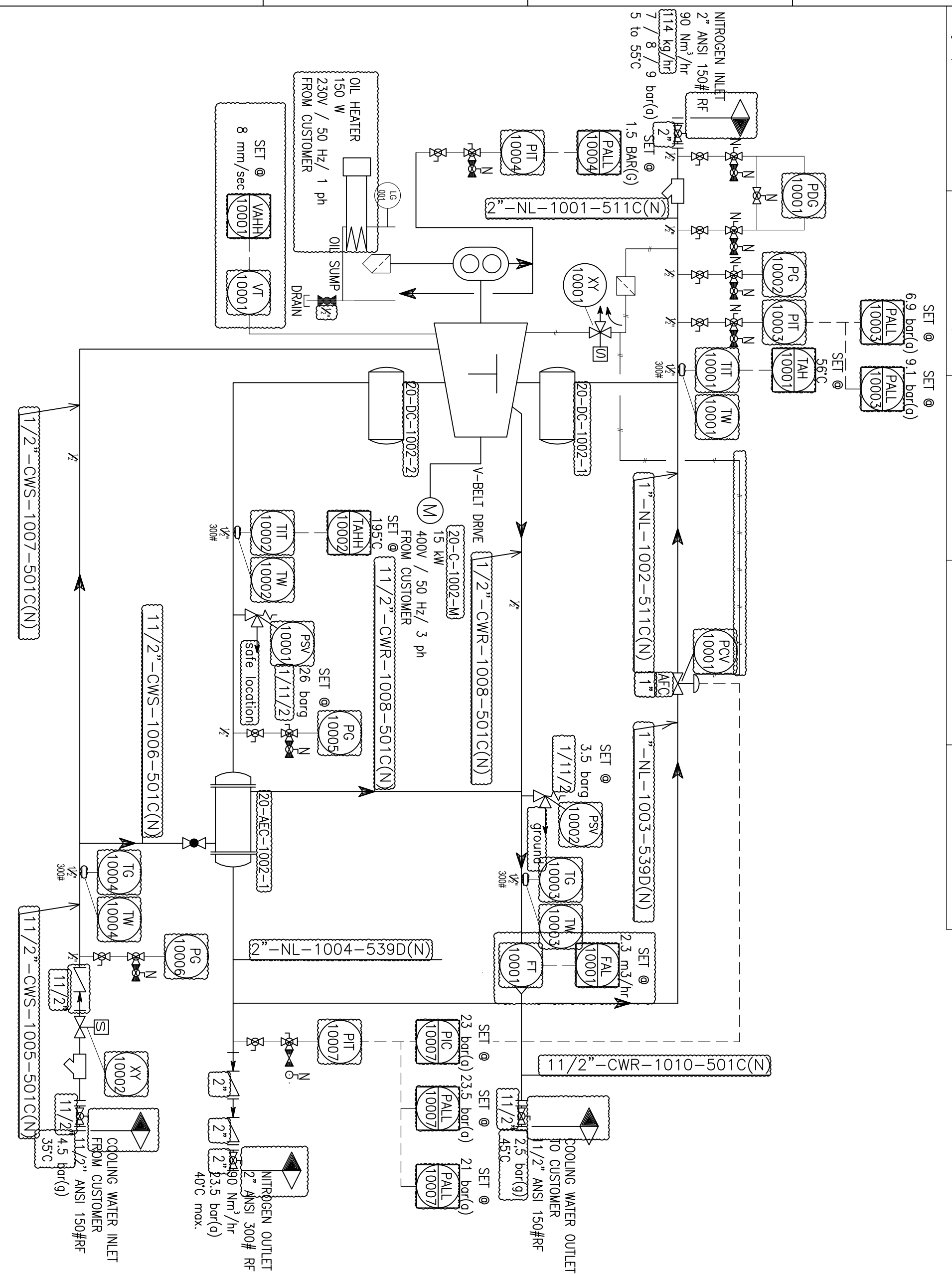
OWNER  شرکت پتروشیمی بوئهر	BUSHEHR PETROCHEMICAL COMPANY MEG PLANT							EPC CONTRACTOR: 	
	P&ID for reciprocating compressor								
MC :   شرکت سفت و سوی توسعه ایرانیان	Project	Area	Phase	Unit	Dis.	Doc.	Seq.	Contract No : 52-98/445	
Owner Document Number: 17811-03	BU	20	VD	303	PR	DWG	0013	Rev.:	Page
								00	2 of 6

TABULATION OF REVISED PAGES

Page	D00	D01	D02	D03	D04
1.	X	X			
2.	X	X			
3.	X	X			
4.	X	X			
5.	X	X			
6.	X	X			
7.					
8.					
9.					
10.					
11.					
12.					
13.					
14.					
15.					
16.					
17.					
18.					
19.					
20.					
21.					
22.					
23.					
24.					
25.					
26.					
27.					
28.					
29.					
30.					
31.					
32.					
33.					
34.					

Page	D00	D01	D02	D03	D04
35.					
36.					
37.					
38.					
39.					
40.					
41.					
42.					
43.					
44.					
45.					
46.					
47.					
48.					
49.					
50.					
51.					
52.					
53.					
54.					
55.					
56.					
57.					
58.					
59.					
60.					
61.					
62.					
63.					
64.					
65.					
66.					
67.					
68.					

COMPRESSOR		MAIN MOTOR		PULSATION DAMPER INLET		PULSATION DAMPER OUTLET		AFTER COOLER	
Tag number:	20-C-1002	Tag number:	20-C-1002-30	Tag number:	20-DC-1002-1	Tag number:	20-DC-1002-2	Tag number:	20-AEC-1002-1
Type:	1-stage oilfree piston	Rated power:	15 kW	Volume:	30L	Volume:	30L	Flow air side:	173 Nm ³ /hr
Model number:	...	Speed:	1475 rpm	OP / DP:	7 to 9 bar(a) / 13.5 bar(a)	OP / DP:	23.5 bar(a) / 35.25 bar(a)	Flow water side:	23.5 bar(a) / 35.25 bar(a)
Compressor capacity:	173 Nm ³ /hr	Power supply:	400 V/50 Hz/3 ph	OT / DT:	5 to 55°C / 0 to 80°C	OP / DP:	190°C / 0 to 200°C	Flow water side:	23.5 bar(a) / 35.25 bar(a)
Operating pressure:	23.5 bar(a)	Nominal current:	To be confirmed	Design:	AMSE VIII, Div. 1	OT / DT:	190°C / 0 to 200°C	Design:	190°C / 0 to 200°C
Speed:	400 rpm	Ingress protection:	IP 55	Material:	Carbon steel	Design:	AMSE VIII, Div. 1	Design:	TEMA C, AMSE VIII, Div. 1
Discharge temperature:	To be confirmed	Hazardous area class:	Ex II 3G IB T3, Ex'd	Material:	Carbon steel	Material:	Carbon steel	Material:	Carbon steel



GENERAL NOTES	
REFERENCE DRAWINGS	DWG.No.
XXXXXXXX	XXXXXXXX

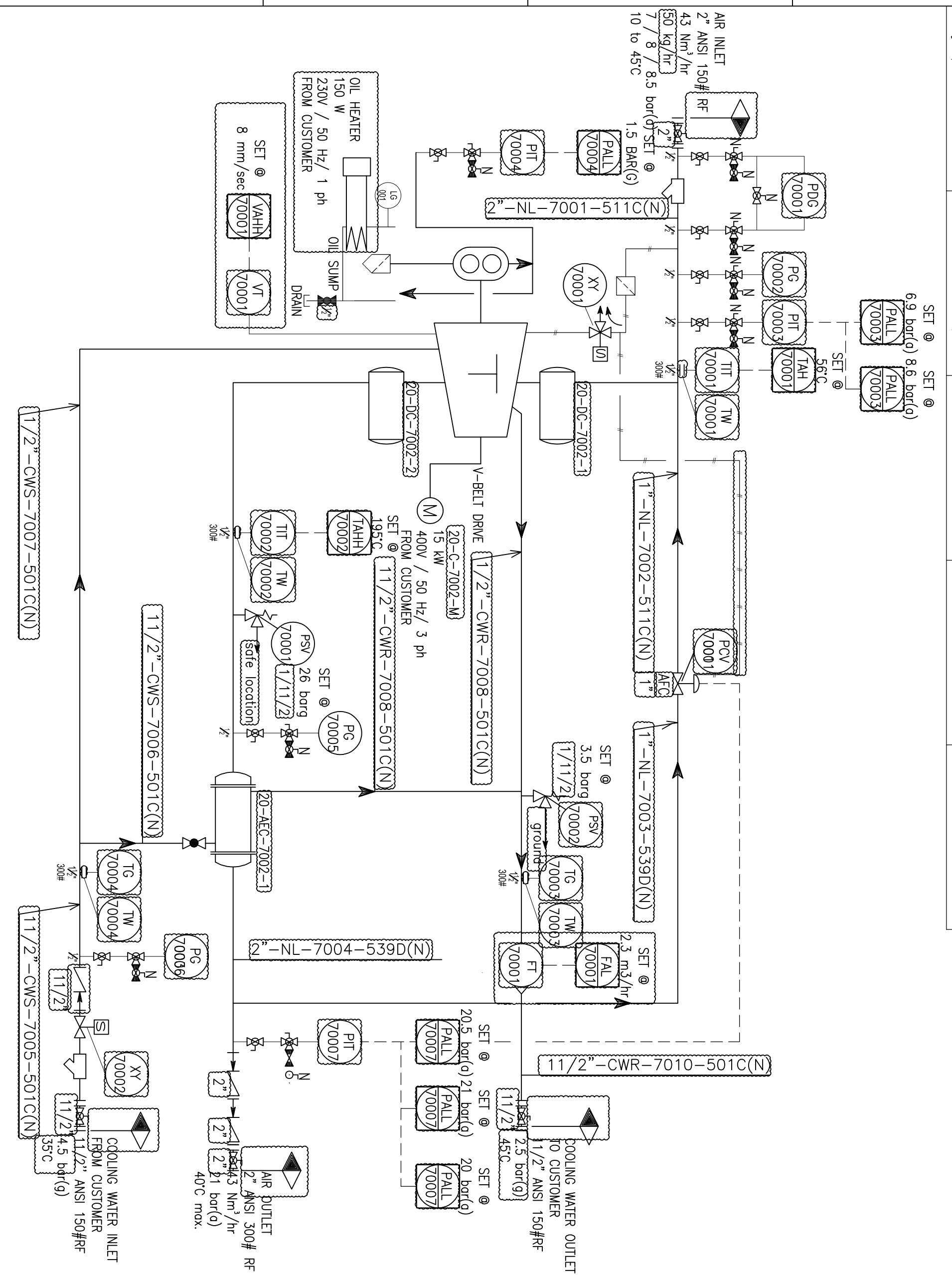
PROJECT: BUSHEHR PETROCHEMICAL COMPANY
MEG PLANT
DRAWING TITLE: COMPRESSOR PACKAGE P & ID
SCALE: 1:1
CLASS: 1
PHASE: P
NO. OF SHEETS: 1 OF 4

DATE	BY	CHKD	APPD
04/12/20

CONTRACTOR: JIPROCK
OWNER: BU-20-YD-303-PR-DWG-0013

THIS DOCUMENT WITH ALL ITS RIGHTS IS THE PROPERTY OF B.P.C. AND MUST BE KEPT IN CONFIDENCE. NO REPRODUCTION OR OTHER USE OF THIS DOCUMENT IS PERMITTED WITHOUT THE PRIOR CONSENT OF B.P.C.

COMPRESSOR		MAIN MOTOR		PULSATION DAMPER INLET		PULSATION DAMPER OUTLET		AFTER COOLER	
Tag number:	20-C-7080	Tag number:	20-C-7002-1	Tag number:	20-DC-7002-1	Tag number:	20-DC-7002-2	Tag number:	20-AEC-7002-1
Type:	1-stage oilfree piston	Rated power:	15 kW	Volume:	30L	Volume:	30L	Flow air side:	173 Nm ³ /hr
Model number:	...	Speed:	1475 rpm	OP / DP:	7 to 6.5 bar(a) / 13.5 bar(a)	OP / DP:	21 bar(a) / 35.25 bar(a)	Flow water side:	4.5 m ³ /hr
Compressor capacity:	173 Nm ³ /hr	Power supply:	400 V/ 50 Hz/ 3 ph	OT / DT:	5 to 55°C / 0 to 80°C	OP / DP:	190°C / 0 to 200°C	OT / DP:	21 bar(a) / 35.25 bar(a)
Operating pressure:	23.5 bar(a)	Nominal current:	To be confirmed	Design:	AMSE VIII, Div. 1	Design:	AMSE VIII, Div. 1	OT / DT:	190°C / 0 to 200°C
Speed:	400 rpm	Ingress protection:	IP 55	Material:	Carbon steel	Material:	Carbon steel	Design:	TEMA C, AMSE VIII, Div. 1
Discharge temperature:	To be confirmed	Hazardous area class:	Ex II 3G IB T3, Ex'd					Material:	Carbon steel



GENERAL NOTES	
REFERENCE DRAWINGS	DWG.No.
XXXXXX	XXXXXX

CONTRACT NO.		SCALE		SIZE		CLASS		PHASE	
PROJECT		AREA		PHASE		NO.		DSC.	
DRAWING TITLE		17811-03 PAID		INSTRUMENT AIR COMPRESSOR					
PROJECT		BUSHEHR PETROCHEMICAL COMPANY		MEG PLANT					
OWNER:		MPC		CONTRACTOR:		LINDOCK		LINDOCK	
REV.		DATE		PURPOSE OF ISSUE (P.O.I.)		PREP.		CHKD.	
A		04/12/20		For approval		GP		CS	
B		20/10/20		For approval		GP		CS	
C				PURPOSE OF ISSUE (P.O.I.)		PREP.		CHKD.	
D						GP		CS	
E						GP		CS	
F						GP		CS	
G						GP		CS	
H						GP		CS	
I						GP		CS	
J						GP		CS	
K						GP		CS	
L						GP		CS	
M						GP		CS	
N						GP		CS	
O						GP		CS	
P						GP		CS	
Q						GP		CS	
R						GP		CS	
S						GP		CS	
T						GP		CS	
U						GP		CS	
V						GP		CS	
W						GP		CS	
X						GP		CS	
Y						GP		CS	
Z						GP		CS	
AA						GP		CS	
AB						GP		CS	
AC						GP		CS	
AD						GP		CS	
AE						GP		CS	
AF						GP		CS	
AG						GP		CS	
AH						GP		CS	
AI						GP		CS	
AJ						GP		CS	
AK						GP		CS	
AL						GP		CS	
AM						GP		CS	
AN						GP		CS	
AO						GP		CS	
AP						GP		CS	
AQ						GP		CS	
AR						GP		CS	
AS						GP		CS	
AT						GP		CS	
AU						GP		CS	
AV						GP		CS	
AW						GP		CS	
AX						GP		CS	
AY						GP		CS	
AZ						GP		CS	
BA						GP		CS	
BB						GP		CS	
BC						GP		CS	
BD						GP		CS	
BE						GP		CS	
BF						GP		CS	
BG						GP		CS	
BH						GP		CS	
BI						GP		CS	
BJ						GP		CS	
BK						GP		CS	
BL						GP		CS	
BM						GP		CS	
BN						GP		CS	
BO						GP		CS	
BP						GP		CS	
BQ						GP		CS	
BR						GP		CS	
BS						GP		CS	
BT						GP		CS	
BU						GP		CS	
BV						GP		CS	
BW						GP		CS	
BX						GP		CS	
BY						GP		CS	
BZ						GP		CS	
CA						GP		CS	
CB						GP		CS	
CC						GP		CS	
CD						GP		CS	
CE						GP		CS	
CF						GP		CS	
CG						GP		CS	
CH						GP		CS	
CI						GP		CS	
CJ						GP		CS	
CK						GP		CS	
CL						GP		CS	
CM						GP		CS	
CN						GP		CS	
CO						GP		CS	
CP						GP		CS	
CQ						GP		CS	
CR						GP		CS	
CS						GP		CS	
CT						GP		CS	
CU						GP		CS	
CV						GP		CS	
CW						GP		CS	
CX						GP		CS	
CY						GP		CS	
CZ						GP		CS	
DA						GP		CS	
DB						GP		CS	
DC						GP		CS	
DD						GP		CS	
DE						GP		CS	
DF						GP		CS	
DG						GP		CS	
DH						GP		CS	
DI						GP		CS	
DJ						GP		CS	
DK						GP		CS	
DL						GP		CS	
DM						GP		CS	
DN						GP		CS	
DO						GP		CS	
DP						GP		CS	
DQ						GP		CS	
DR						GP		CS	
DS						GP		CS	
DT						GP		CS	
DU						GP		CS	
DV						GP		CS	
DW						GP		CS	
DX						GP		CS	
DY						GP		CS	
DZ						GP		CS	
EA						GP		CS	
EB						GP		CS	
EC						GP		CS	
ED						GP		CS	
EE						GP		CS	
EF						GP		CS	
EG						GP		CS	
EH						GP		CS	
EI						GP		CS	
EJ						GP		CS	
EK						GP		CS	
EL						GP		CS	
EM						GP		CS	
EN						GP		CS	
EO						GP		CS	
EP						GP		CS	
EQ						GP		CS	
ER						GP		CS	
ES						GP		CS	
ET						GP		CS	
EU						GP		CS	
EV						GP		CS	
EW						GP		CS	
EX						GP		CS	
EY						GP		CS	
EZ						GP		CS	
FA						GP		CS	
FB						GP		CS	
FC						GP		CS	
FD						GP		CS	
FE						GP		CS	
FF						GP		CS	
FG						GP		CS	
FH						GP		CS	
FI						GP		CS	
FJ						GP		CS	
FK						GP		CS	
FL						GP		CS	
FM						GP		CS	
FN						GP		CS	
FO						GP		CS	
FP						GP		CS	
FQ						GP		CS	
FR						GP		CS	
FS						GP		CS	
FT						GP		CS	
FU						GP		CS	
FV						GP		CS	
FW						GP		CS	
FX						GP		CS	
FY						GP		CS	
FZ						GP		CS	
GA						GP		CS	
GB						GP		CS	
GC						GP		CS	
GD						GP		CS	
GE						GP		CS	
GF						GP		CS	
GG						GP		CS	
GH						GP		CS	
GI						GP		CS	
GJ						GP		CS	
GK						GP		CS	
GL						GP		CS	
GM						GP		CS	
GN						GP		CS	
GO						GP		CS	
GP						GP		CS	
GQ						GP		CS	
GR						GP		CS	
GS						GP		CS	
GT						GP		CS	
GU						GP		CS	
GV						GP		CS</	

