






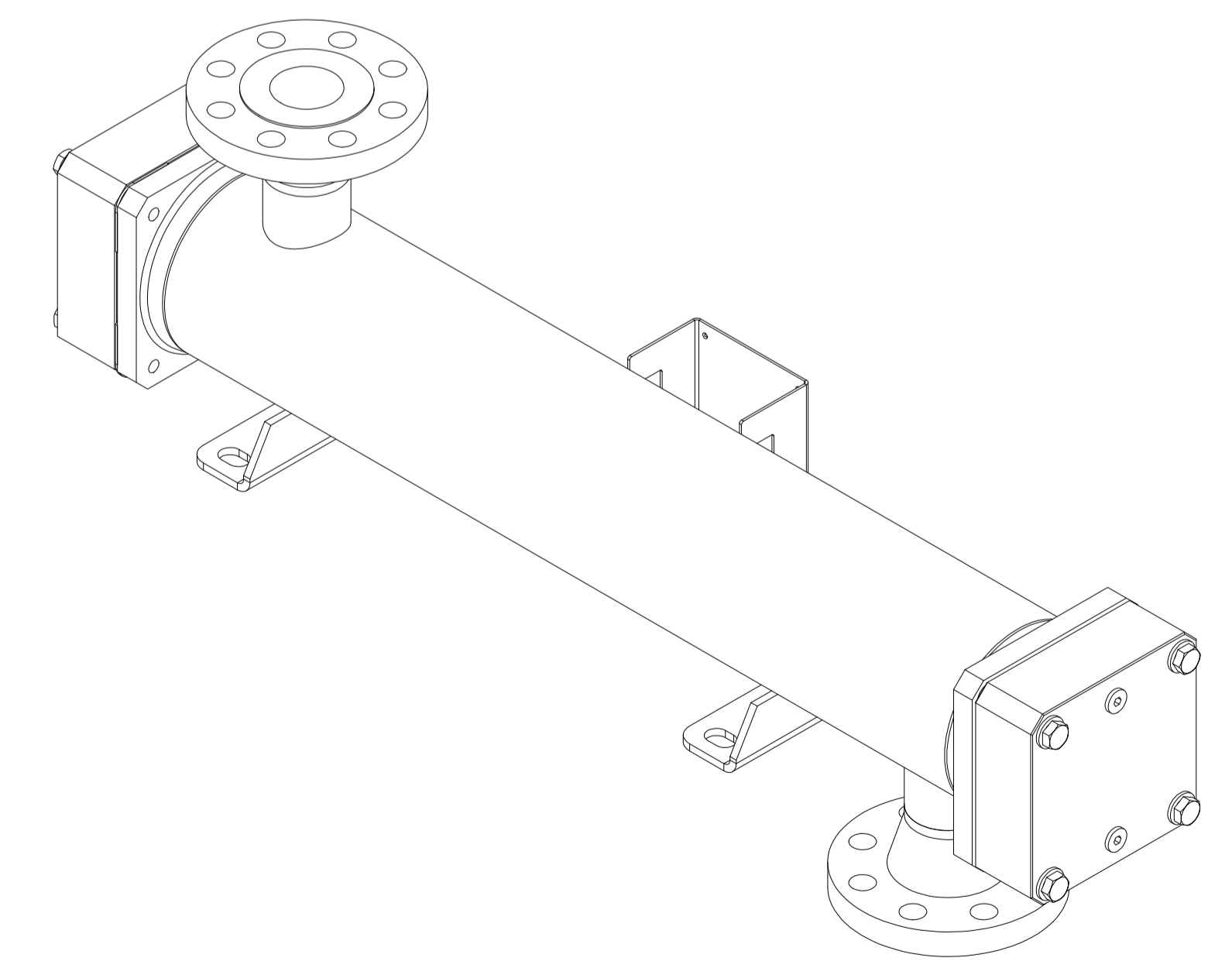
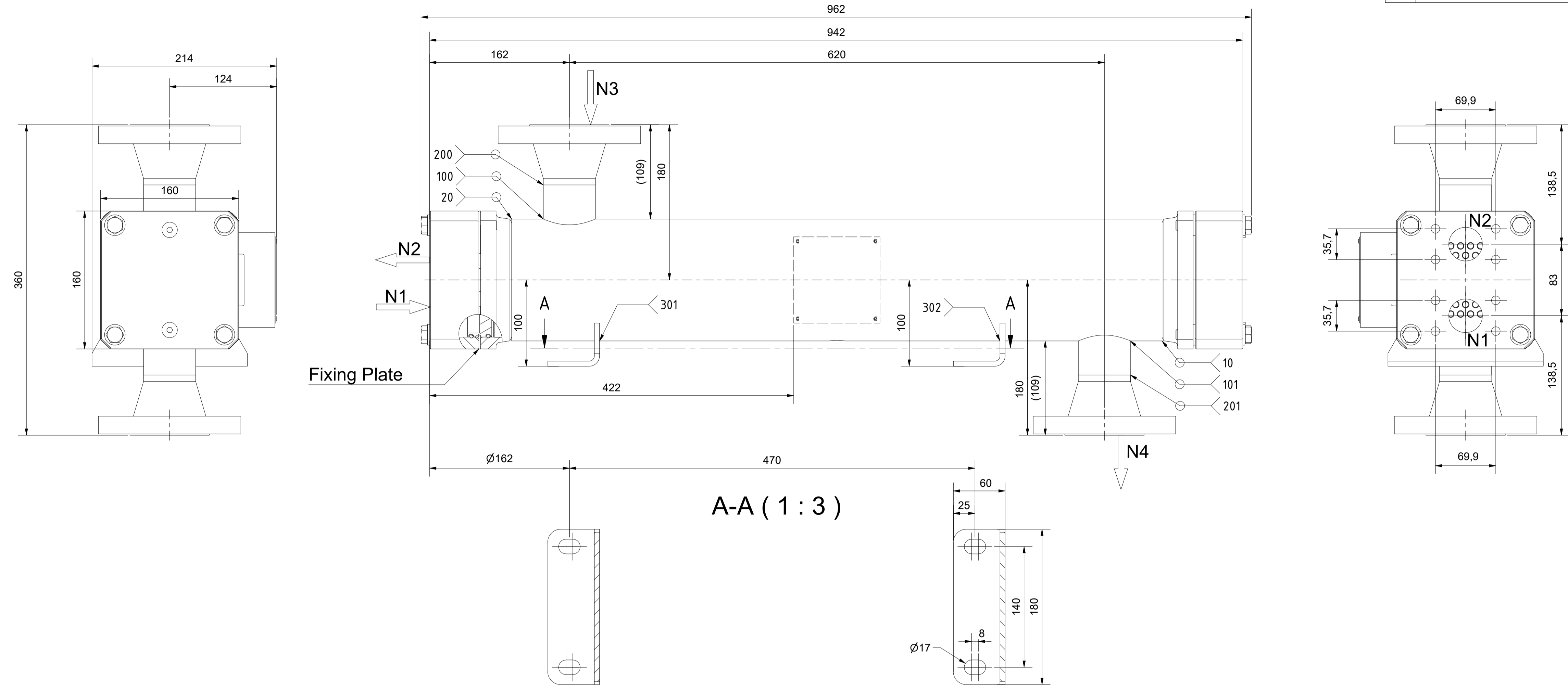
OWNER:  شرکت سست و سویی توهمه ایران (سهامی خاص)	BUSHEHR PETROCHEMICAL COMPANY MEG PLANT						EPC CONTRACTOR:  Chagalesh-Enerchimi-Steam Joint Venture BUPC-MEG PLANT PROJECT		
	AFTER COOLER DETAIL DRAWING FOR NITROGEN GAS BOOSTER								
MC :									
Owner Document Number: 17811-23A	Project	Area	Phase	Unit	Dis.	Doc.	Seq.	Rev.:	Page
	BU	20	VD	303	ME	DWG	0018	00	1 of 3

## AFTER COOLER DETAIL DRAWING FOR NITROGEN GAS BOOSTER

00	06/12/2021	For approval	KP	LdM	JR	
Rev.	Date	Purpose of Issue	Prepared	Checked	Approved	AC Code
					Class: 1	Phase: P



Nozzle Table / Stutzentabelle		
No. / Nr.	Function / Funktion	Size / Größe
N1	Tube side In	SAE 1 1/2"
N2	Tube side Out	SAE 1 1/2"
N3	Shell side In	ASME B16.5 - 2" - Class 300 - RF
N4	Shell side Out	ASME B16.5 - 2" - Class 300 - RF
N5	Tube side Drain/Vent	G 1/2"



A-A (1:3)

**IWS-Monjé**  
www.iws-monje.com

Kd.-Id. - Nr. XXX  
IWS-Id. Nr. 704212651

Manufactured by:  
Hersteller 901050003

No Serie: TBD Built: 2021  
Serienr. Baujahr

	Tube side	Shell side	
PS	-1/10	-1/25	bar(g)
V	2,9	7,6	L
TS	-10/95	-10/210	°C
PT	15	37,5	bar(g)
Fluidgroup	-	-	Fluidgruppe

Type / Typ: RLP 800/140-72-2-0/1-CuNi/AL-IW

Job Information		
Job No. Auftrags Nr.	TBD	
Serial No. Serien Nr.	TBD	
IWS Project No. IWS Projekt Nr.	104213658	
IWS Item No. IWS Artikel Nr.	704212651	
Customer Tag No. Kunden Erkennungs Nr.	17811-CC-0001	
Design Parameters		
Mech. Design Code Konstruktionsvorschrift	ASME VIII Div.1 - ed. 2019	
TEMA Class/Type TEMA Klasse/Typ	Type BEW	
	Tube side Rohrseite	Shell side Mantelseite
Design Pressure (MAWP) Max. zul. Druck (MAWP) / (PS)	-1/10bar(g)	-1/25bar(g)
Test Pressure (PT) Prüfdruck	15bar(g)	37,5bar(g)
Design Temperature (AT) Zul. Betriebstemperatur (AT) / (TS)	-10/95°C	-10/210°C
Volume (V) Volumen	2,9L	7,6L
Certification / Registration		
<input checked="" type="checkbox"/> ASME VIII Div. 1	U-Stamp	No
	NB Registration	No
Nondestructive Testing (NDT)		
Radiographic Testing Durchstrahlungsprüfung	Acc. to design code	
Penetrant Test/Magn. Particle Test. Oberflächenprüfung	none	
Delta Ferrite Testing Delta Ferritprüfung	none	
Ultrasonic Testing Ultraschallprüfung	none	
Corresponding Documents		
Strength Calculation Festigkeitsberechnung	TBD	
Weld- and Test Plan Schweiß- und Prüfplan	TBD	
Parts List Stückliste	Page 2	
Traveler Fertigungsbegleitschein	TBD	
General Information		
Surface Treatment Shell Oberflächenbehandlung Gehäuse	pickled and passivated	
Surface Treatment Header Oberflächenbehandlung Yorköpfe	RAL 7001 - Zarcosin coated inner surface	
Empty Weight Leergewicht	ca. 38,4 kg	
Description		
After/Inter Cooler		
Drawing No. Zeichnungsnummer	20-AEC-1002-1/2	
Tolerances in acc. to EN ISO 13920-DH and e ASME VIII Div. 1 UW-33, UW-35, UG-79, UG-80, UG-81		
Scale Maßstab	1:3	Format Blatt
Page Blatt	1	

**IWS-MONJÉ**  
HEAT EXCHANGERS

IWS-Monjé Heat Exchangers GmbH  
Wittener Straße 102  
44789 Bochum  
Germany  
www.iws-monje.com

This drawing and all data contained is exclusive property of IWS-Monjé Heat Exchangers GmbH and must not be disclosed to others without written consent.