





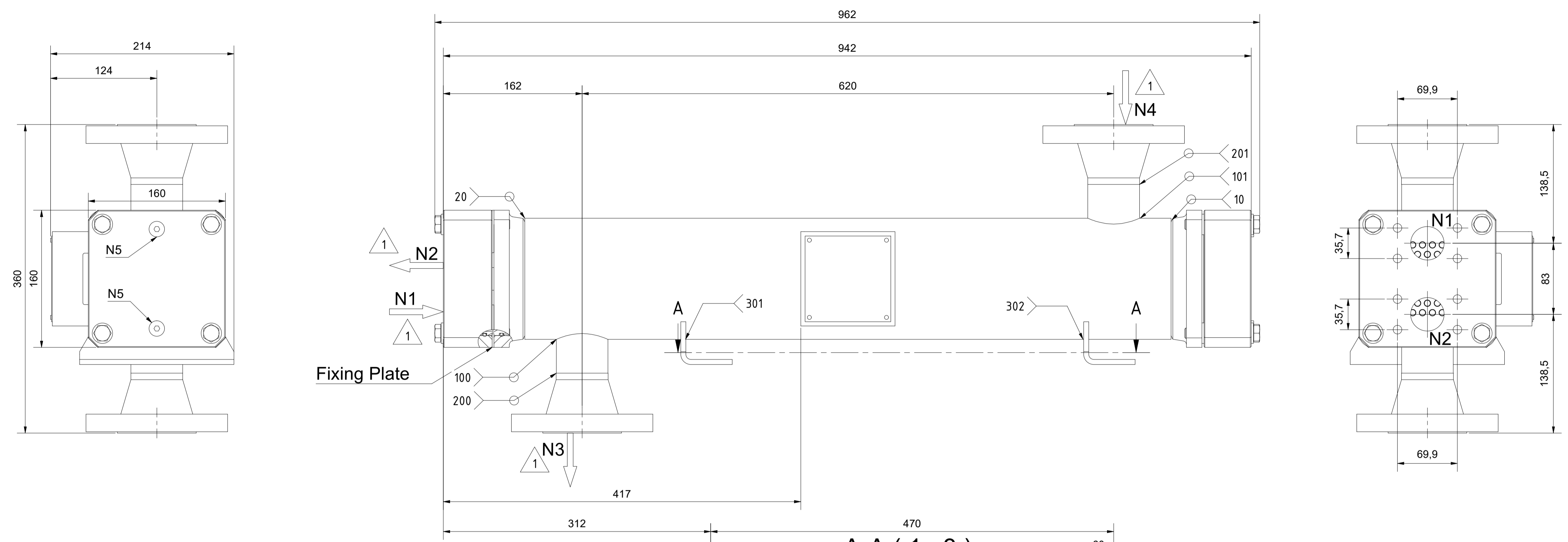
OWNER:  شرکت سست و سویی توهمه ایران (سهامی خاص)	<b>BUSHEHR PETROCHEMICAL COMPANY MEG PLANT</b>							EPC CONTRACTOR:  Chagalesh-Enerchimi-Steam Joint Venture BUPC-MEG PLANT PROJECT	
	<b>AFTER COOLER DETAIL DRAWING FOR NITROGEN GAS BOOSTER</b>								
MC :  شرکت سست و سویی توهمه ایران (سهامی خاص)	Project	Area	Phase	Unit	Dis.	Doc.	Seq.	Contract No : 52-98/445	
Owner Document Number: 17811-23A	BU	20	VD	303	ME	DWG	0018	Rev.:	Page
								01	1 of 8

## AFTER COOLER DETAIL DRAWING FOR NITROGEN GAS BOOSTER

01	07/02/2022	For approval	KP	LdM	JR		
00	06/12/2021	For approval	KP	LdM	JR		
<b>Rev.</b>	<b>Date</b>	<b>Purpose of Issue</b>	<b>Prepared</b>	<b>Checked</b>	<b>Approved</b>	<b>AC Code</b>	
						<b>Class: 1</b>	<b>Phase: P</b>

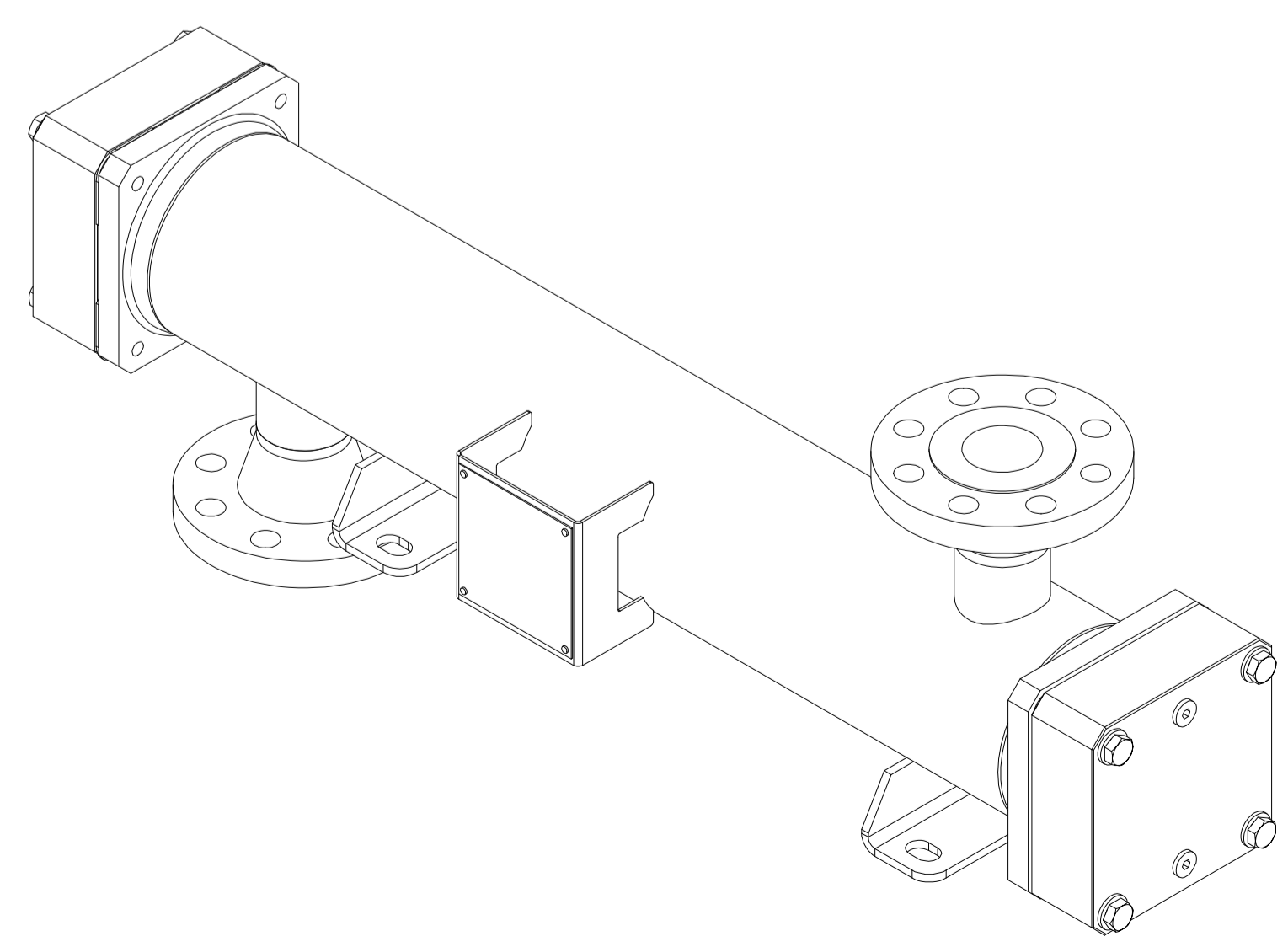


Nozzle Table / Stutzentabelle		
No. / Nr.	Function / Funktion	Size / Größe
N1	Tubeside In	SAE 1 1/2" - 3000PSI
N2	Tubeside Out	SAE 1 1/2" - 3000PSI
N3	Shellside In	ASME B16.5 - 2" - Class 300 - RF - s=4,83mm
N4	Shellside Out	ASME B16.5 - 2" - Class 300 - RF - s=4,83mm
N5	Tubeside Drain/Vent	G 1/4"



A-A (1:3)

G (1:1)



**IWS-Monjé**  
www.iws-monje.com

Kd.-Id. - Nr: 17811-CC-0001  
IWS-Id. Nr: 704212651\_B

Manufactured by: 901050003  
Hersteller

No Serie: 211167-2  
Seriennr.

Built: 2022  
Baujahr

	Tubeside	Shellside	
PS	-1/10	-1/25	bar(g)
V	2,9	7,6	L
TS	-10/95	-10/210	°C
PT	15	37,5	bar(g)
Fluidgroup	-	-	Fluidgruppe

Type / Typ: RLP 800/140-72-2-0/1-CuNi/AL-IW

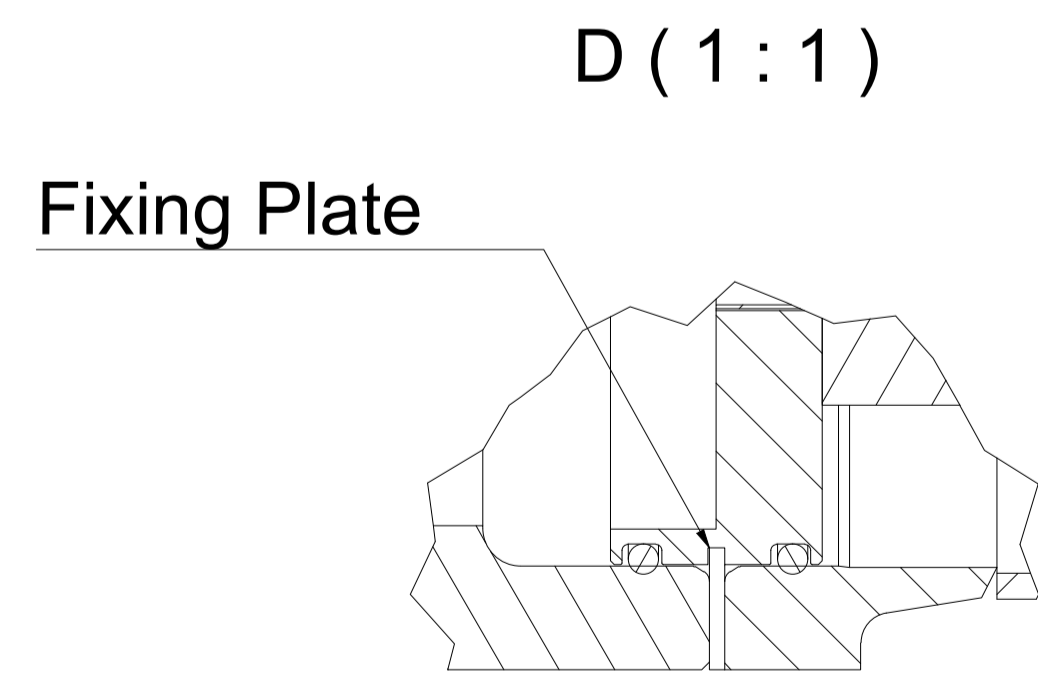
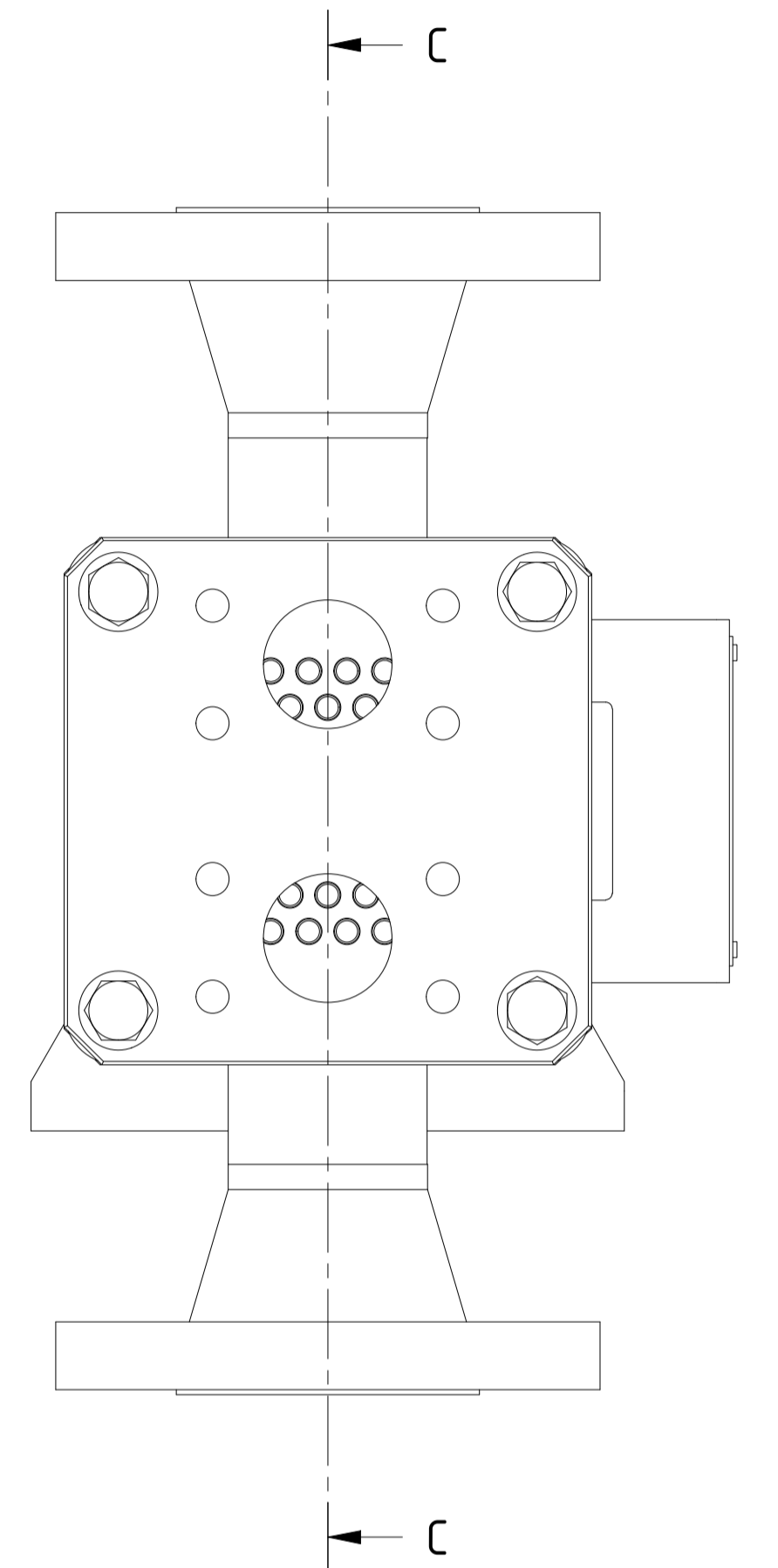
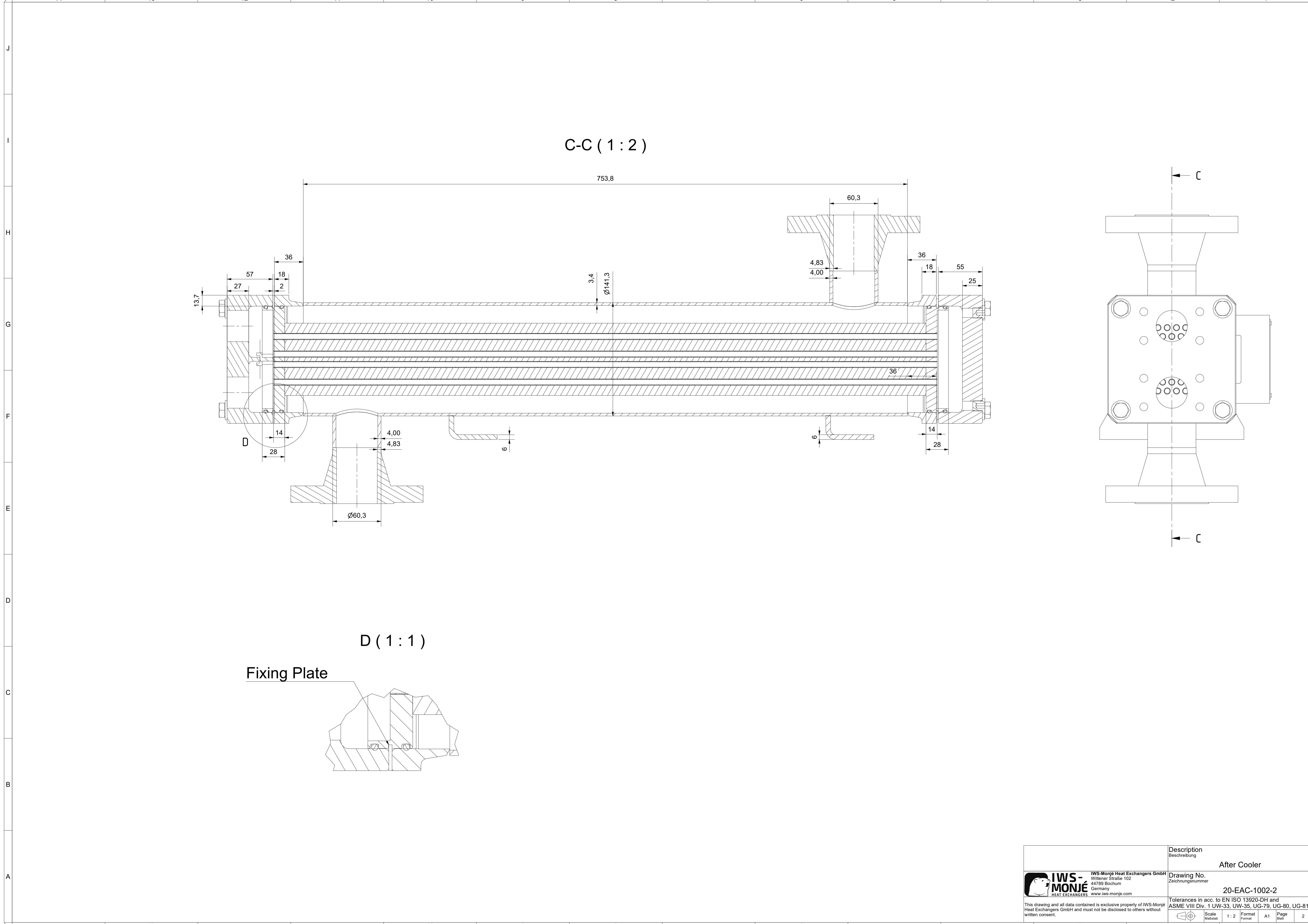
Job Information	
Job No. Auftrags Nr.	21-11-67
Serial No. Serien Nr.	211167-2
IWS Project No. IWS Projekt Nr.	104213658
IWS Item No. IWS Artikel Nr.	704212651_B
Customer Tag No. Kunden Erkennung Nr.	17811-CC-0001
Design Parameters	
Mech. Design Code Konstruktionsvorschrift	ASME VIII Div.1 - ed. 2019
TEMA Class/Type TEMA Klasse/Typ	Type BEW
	Tubeside Shellside Rohrseite Mantelseite
Design Pressure (MAWP) Max. zul. Druck (MAWP) / (PS)	-1/10bar(g) -1/25bar(g)
Test Pressure (PT) Prüfdruck	15bar(g) 37,5bar(g)
Design Temperature (AT) Zul. Betriebstemperatur (AT) / (TS)	-10/95°C -10/210°C
Volume (V) Volumen	2,9L 7,6L
Corrosion Allowance Korrosionszuschlag	0mm 0mm
Certification / Registration	
<input checked="" type="checkbox"/> ASME VIII Div. 1	U-Stamp No NB Registration No
Nondestructive Testing (NDT)	
Radiographic Testing Durchstrahlungsprüfung	Acc. to design code
Penetrant Test/Magn. Particle Test. Oberflächenrisssprüfung	none
Delta Ferrite Testing Delta Ferritprüfung	none
Ultrasonic Testing Ultraschallprüfung	none
Corresponding Documents	
Strength Calculation Festigkeitsberechnung	BK12-3102
Weld- and Test Plan Schweiß- und Prüfplan	BK12-3102
Parts List Stückliste	Page 3

General Information	
Surface Treatment Shell Oberflächenbehandlung Gehäuse	pickled and passivated
Surface Treatment Header Oberflächenbehandlung Vorköpfe	coated inner surface
Rev. Rev.	Changes Änderungen
Date Datum	02.02.2022
Name Name	K.Kraft
Empty Weight Leergewicht	ca.38,4 kg
Description Beschreibung	After Cooler
Drawing No. Zeichnungsnummer	20-EAC-1002-2



This drawing and all data contained is exclusive property of IWS-Monjé Heat Exchangers GmbH and must not be disclosed to others without written consent.

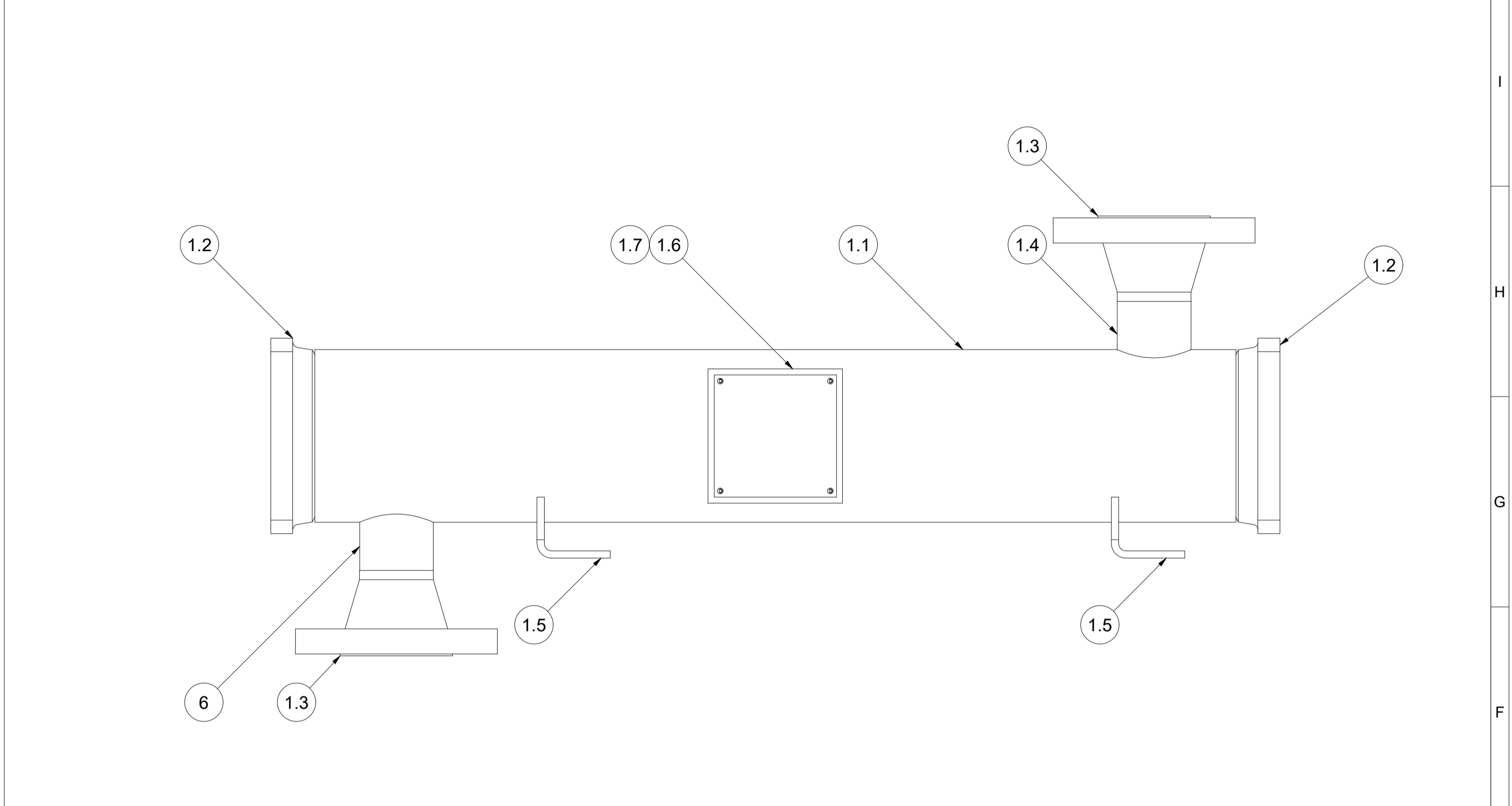
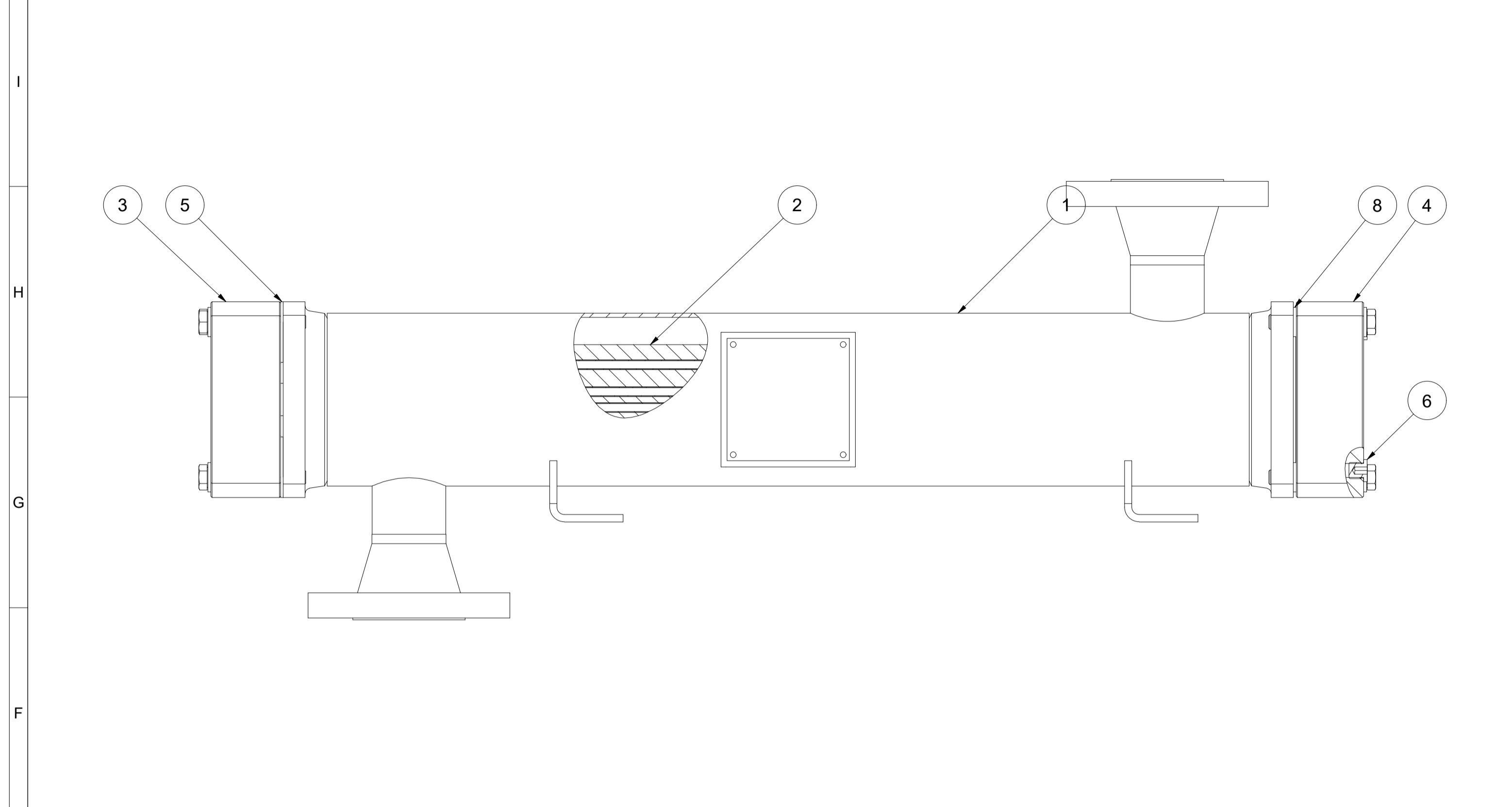
ASME VIII Div. 1 UW-33, UW-35, UG-79, UG-80, UG-81  
Tolerances in acc. to EN ISO 13920-DH and  
Scale 1:3  
Format A1  
Page 1



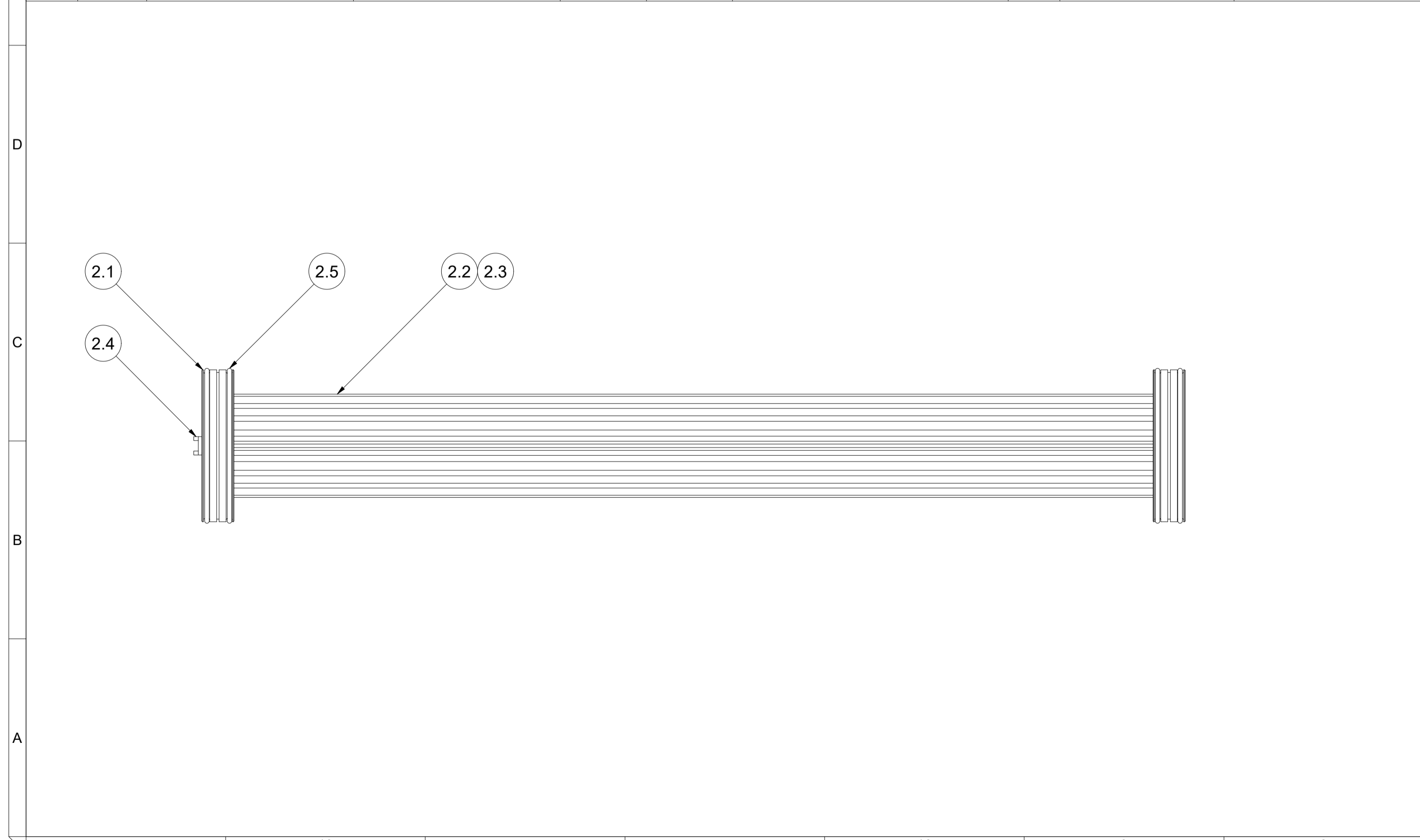
<b>IWS-MONJÉ</b> <small>HEAT EXCHANGERS</small>	<b>IWS-Monjé Heat Exchangers GmbH</b> Wittener Straße 102 44789 Bochum Germany <small>www.iws-monje.com</small>	<b>Description</b> Beschreibung <b>After Cooler</b>													
		<b>Drawing No.</b> Zeichnungsnummer <b>20-EAC-1002-2</b>													
<small>This drawing and all data contained is exclusive property of IWS-Monjé Heat Exchangers GmbH and must not be disclosed to others without written consent.</small>		<b>Tolerances in acc. to EN ISO 13920-DH and ASME VIII Div. 1 UW-33, UW-35, UG-79, UG-80, UG-81</b>	<table border="1"> <tr> <td>Scale</td> <td>1:2</td> <td>Format</td> <td>A1</td> <td>Page</td> <td>2</td> </tr> <tr> <td>Maßstab</td> <td></td> <td>Format</td> <td></td> <td>Blatt</td> <td></td> </tr> </table>	Scale	1:2	Format	A1	Page	2	Maßstab		Format		Blatt	
Scale	1:2	Format	A1	Page	2										
Maßstab		Format		Blatt											

14	13	12	11	10	9	8			
Pos.	Qty. / Menge	Description	Bezeichnung	Material / Werkstoff	Norm	Dimensions / Abmessungen	Cert. / Zgn.	Rules / Regelwerk	Notes / Bemerkungen
1	1	Shell Assembly	Mantelbaugruppe	-	-	-	-	-	-
2	1	Bundle Assembly	Bündelbaugruppe	-	-	-	-	-	-
3	1	Front End Cover	Abdeckung Vorne	CS	-	-	3.1	-	-
4	1	Back End Cover	Abdeckung Hinten	CS	-	-	3.1	-	-
5	4	Fixing Plate	Fixierplatte	304	-	-	-	-	-
6	2	Sealing Plug	Verschlusschraube	304	-	G 1/4"	-	-	-
7	8	Bolt	Schraube	A4-70	-	M12 x 80	-	-	-
8	12	Washer	Scheibe	A4	-	Ø13mm	-	-	-

7	6	5	4	3	2	1			
Pos.	Qty. / Menge	Description	Bezeichnung	Material / Werkstoff	Norm	Dimensions / Abmessungen	Cert. / Zgn.	Rules / Regelwerk	Notes / Bemerkungen
1.1	1	Shell	Mantel	TP316	SA-312	Ø141,3mm x 3,4mm	3.1	-	-
1.2	2	Flange Ring	Flanschring	F316	SA-182	KL12	3.1	-	-
1.3	2	Welding Neck Flange	Vorschweißflansch	F316	SA-182	2" - Class 300 - RF	3.1	ASME B16.5	-
1.4	2	Nozzle Pipe	Stutzenrohr	TP316	SA-312	Ø60,3mm x 4mm	3.1	-	-
1.5	2	Foot	Fuß	304	SA-240	t=6	-	-	-
1.6	1	Nameplate Holder	Typenschildhalter	304	SA-240	-	-	-	-
1.7	1	Nameplate	Typenschild	304	SA-240	-	-	-	-



Pos.	Qty. / Menge	Description	Bezeichnung	Material / Werkstoff	Norm	Dimensions / Abmessungen	Cert. / Zgn.	Rules / Regelwerk	Notes / Bemerkungen
2.1	2	Tubesheet	Rohrplatte	Brass	-	-	3.1	-	-
2.2		Fin	Lamelle	Aluminium	-	-	-	-	-
2.3	72	Tube	Rohr	CuNi10	-	-	3.1	-	-
2.4	1	Separator Gasket	Trennstegdichtung	PE1000	-	-	-	-	-
2.5	4	O-Ring	O-Ring	Viton	-	-	-	-	-



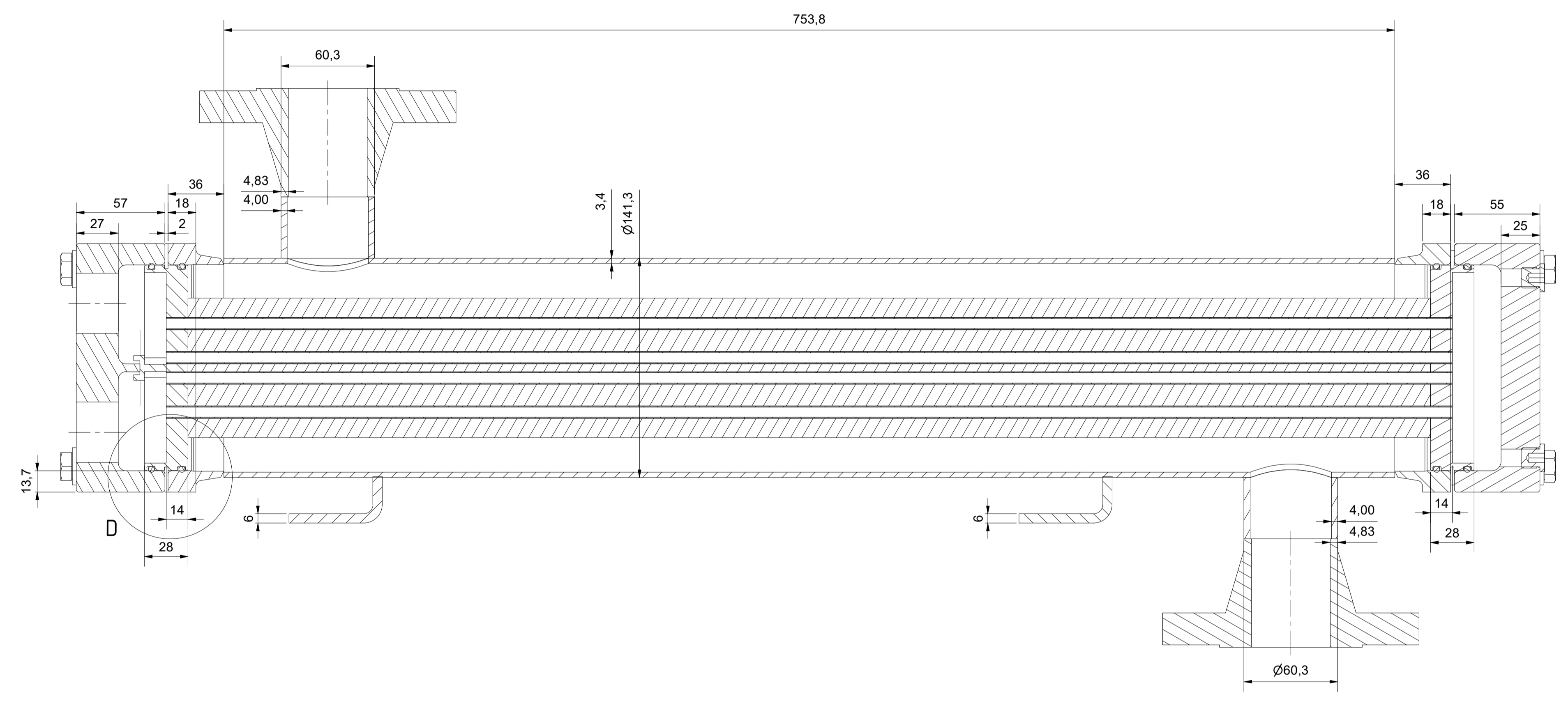
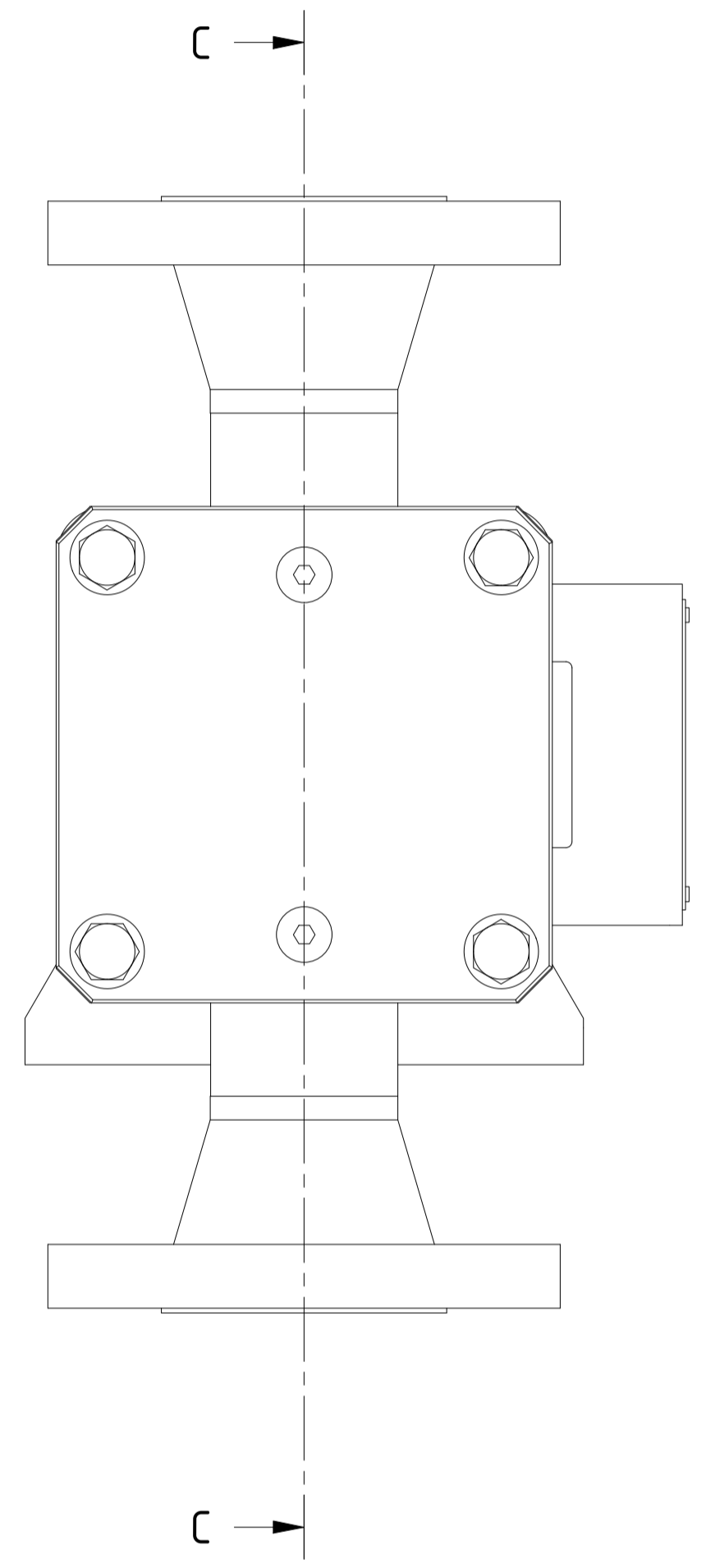
<p>IWS-Monjé Heat Exchangers GmbH Wittener Straße 102 44789 Bochum Germany www.iws-monje.com</p>		<p>Description Beschreibung <b>After Cooler</b></p> <p>Drawing No. Zeichnungsnummer <b>20-EAC-1002-2</b></p>
<p>This drawing and all data contained is exclusive property of IWS-Monjé Heat Exchangers GmbH and must not be disclosed to others without written consent.</p>		<p>ASME VIII Div. 1 UW-33, UW-35, UG-79, UG-80, UG-81 Tolerances in accordance to EN ISO 13920-DH and Scale 1:3 Format A1 Page 3</p>



14 13 12 11 10 9 8 7 6 5 4 3 2 1

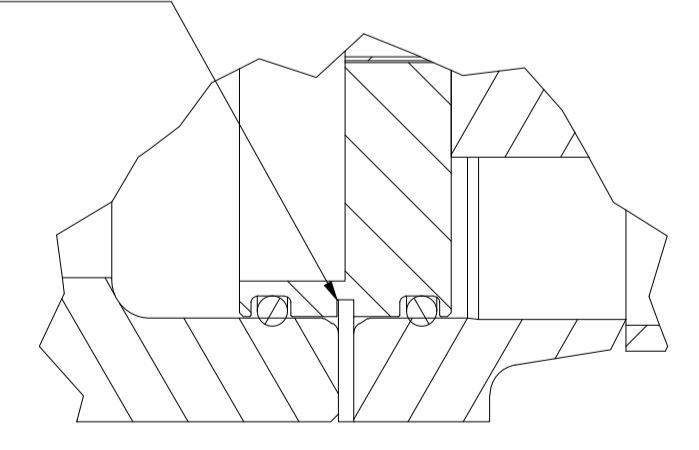
J I H G F E D C B A

### C-C (1:2)



### D (1:1)

Fixing Plate

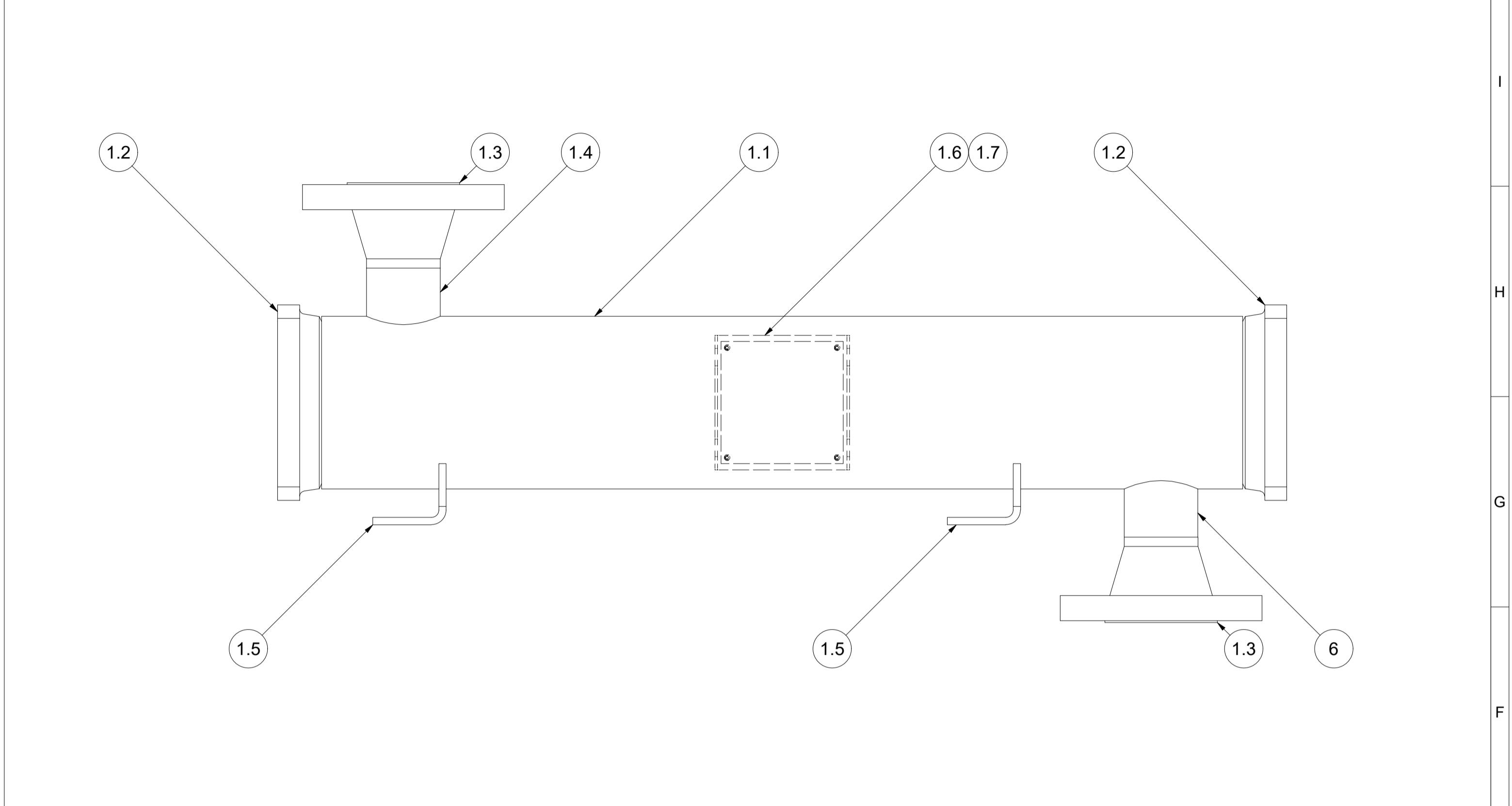
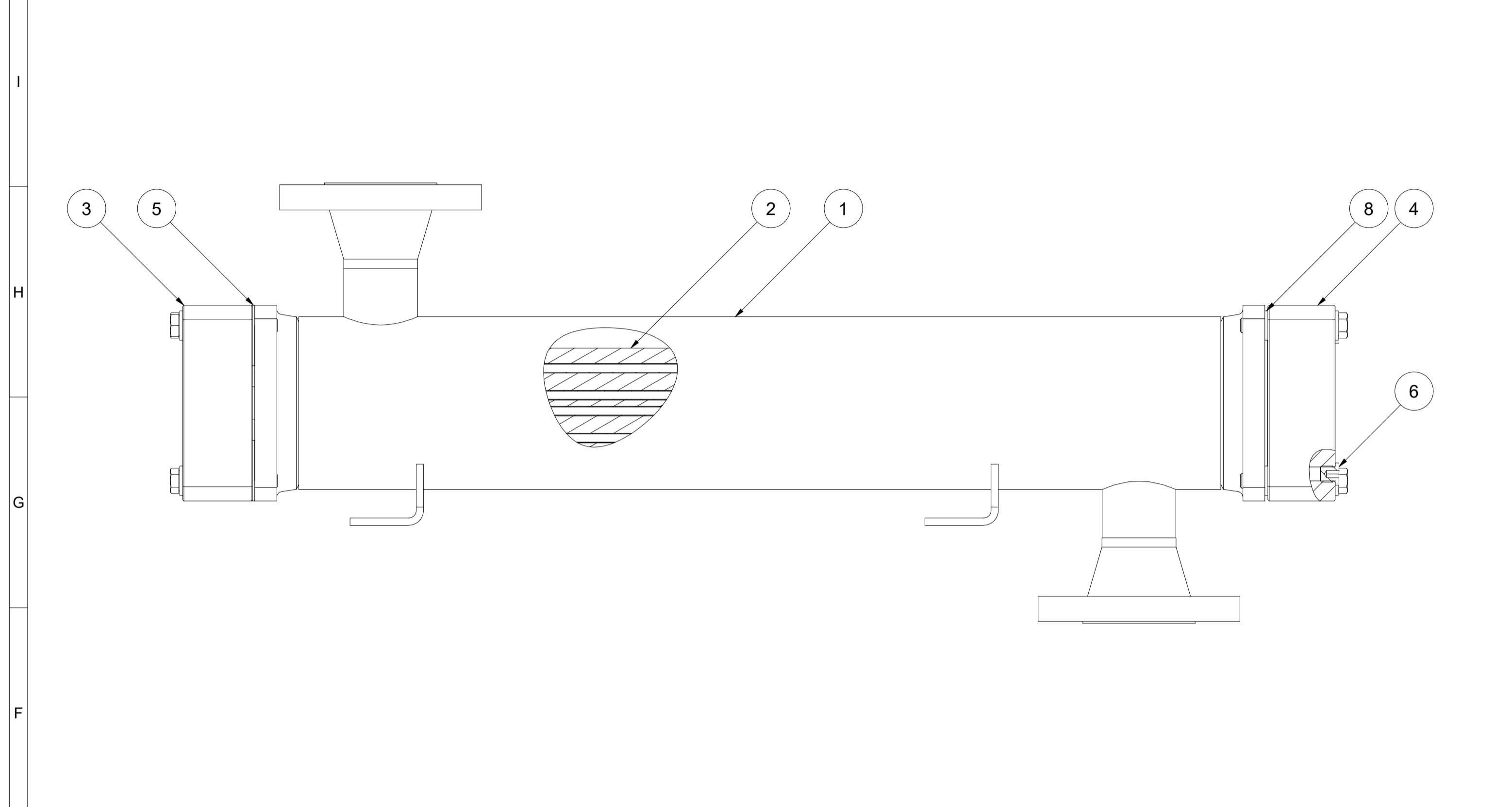


<p><b>IWS-MONJE</b> HEAT EXCHANGERS</p>	<p>IWS-Monje Heat Exchangers GmbH Wittener Straße 102 44789 Bochum Germany www.iws-monje.com</p>	<p>Description Beschreibung <b>Inter Cooler</b></p>
	<p>Drawing No. Zeichnungsnummer <b>20-EAC-1002-1</b></p>	<p>ASME VIII Div. 1 UW-33, UW-35, UG-79, UG-80, UG-81 Tolerances in acc. to EN ISO 13920-DH and Scale 1:2 Format A1 Page 2</p>

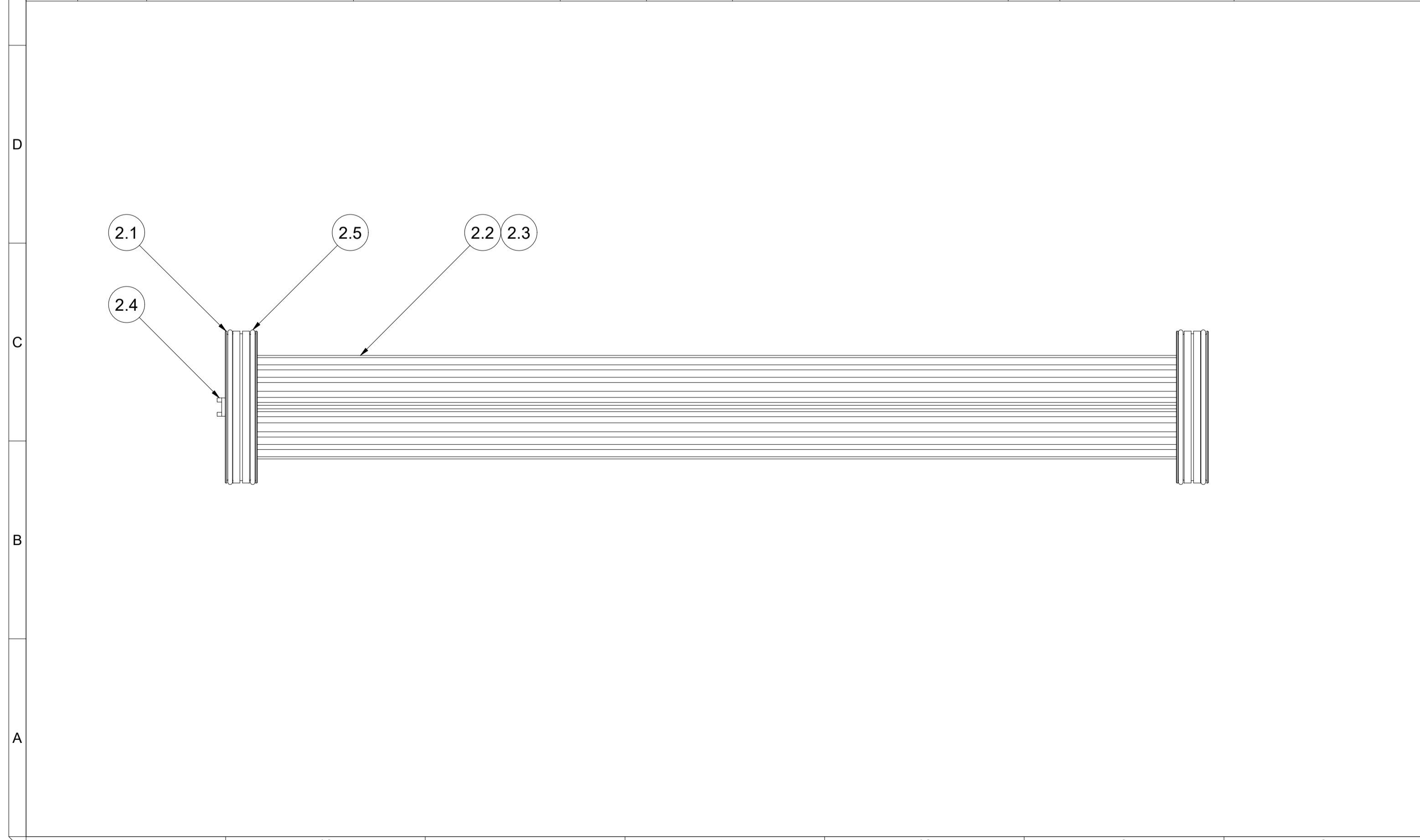
14 13 12 11 10 9 8 7 6 5 4 3 2 1

14	13	12	11	10	9	8			
Pos.	Qty. / Menge	Description	Bezeichnung	Material / Werkstoff	Norm	Dimensions / Abmessungen	Cert. / Zgn.	Rules / Regelwerk	Notes / Bemerkungen
1	1	Shell Assembly	Mantelbaugruppe	-	-	-	-	-	-
2	1	Bundle Assembly	Bündelbaugruppe	-	-	-	-	-	-
3	1	Front End Cover	Abdeckung Vorne	CS	3.1	-	-	-	-
4	1	Back End Cover	Abdeckung Hinten	CS	3.1	-	-	-	-
5	4	Fixing Plate	Fixierplatte	304	-	-	-	-	-
6	2	Sealing Plug	Verschlusschraube	304	-	G 1/4"	-	-	-
7	8	Bolt	Schraube	A4-70	-	M12 x 80	-	-	-
8	12	Washer	Scheibe	A4	-	Ø13mm	-	-	-

7	6	5	4	3	2	1			
Pos.	Qty. / Menge	Description	Bezeichnung	Material / Werkstoff	Norm	Dimensions / Abmessungen	Cert. / Zgn.	Rules / Regelwerk	Notes / Bemerkungen
1.1	1	Shell	Mantel	TP316	SA-312	Ø141,3mm x 3,4mm	3.1	-	-
1.2	2	Flange Ring	Flanschring	F316	SA-182	KL12	3.1	-	-
1.3	2	Welding Neck Flange	Vorschweißflansch	F316	SA-182	2" - Class 300 - RF	3.1	ASME B16.5	-
1.4	2	Nozzle Pipe	Stutzenrohr	TP316	SA-312	Ø60,3mm x 4mm	3.1	-	-
1.5	2	Foot	Fuß	304	SA-240	t=6	-	-	-
1.6	1	Nameplate Holder	Typenschildhalter	304	SA-240	-	-	-	-
1.7	1	Nameplate	Typenschild	304	SA-240	-	-	-	-



Pos.	Qty. / Menge	Description	Bezeichnung	Material / Werkstoff	Norm	Dimensions / Abmessungen	Cert. / Zgn.	Rules / Regelwerk	Notes / Bemerkungen
2.1	2	Tubesheet	Rohrplatte	Brass	-	-	3.1	-	-
2.2		Fin	Lamelle	Aluminium	-	-	-	-	-
2.3	72	Tube	Rohr	CuNi10	-	-	3.1	-	-
2.4	1	Separator Gasket	Trennstegdichtung	PE1000	-	-	-	-	-
2.5	4	O-Ring	O-Ring	Viton	-	-	-	-	-



		<b>IWS-Monjé Heat Exchangers GmbH</b> Wittener Straße 102 44789 Bochum Germany www.iws-monje.com		Description Beschreibung <b>Inter Cooler</b>	
Drawing No. Zeichnungsnummer <b>20-EAC-1002-1</b>		ASME VIII Div. 1 UW-33, UW-35, UG-79, UG-80, UG-81 Tolerances in acc. to EN ISO 13920-DH and Scale 1:3			
This drawing and all data contained is exclusive property of IWS-Monjé Heat Exchangers GmbH and must not be disclosed to others without written consent.		Page 3 of 3			