



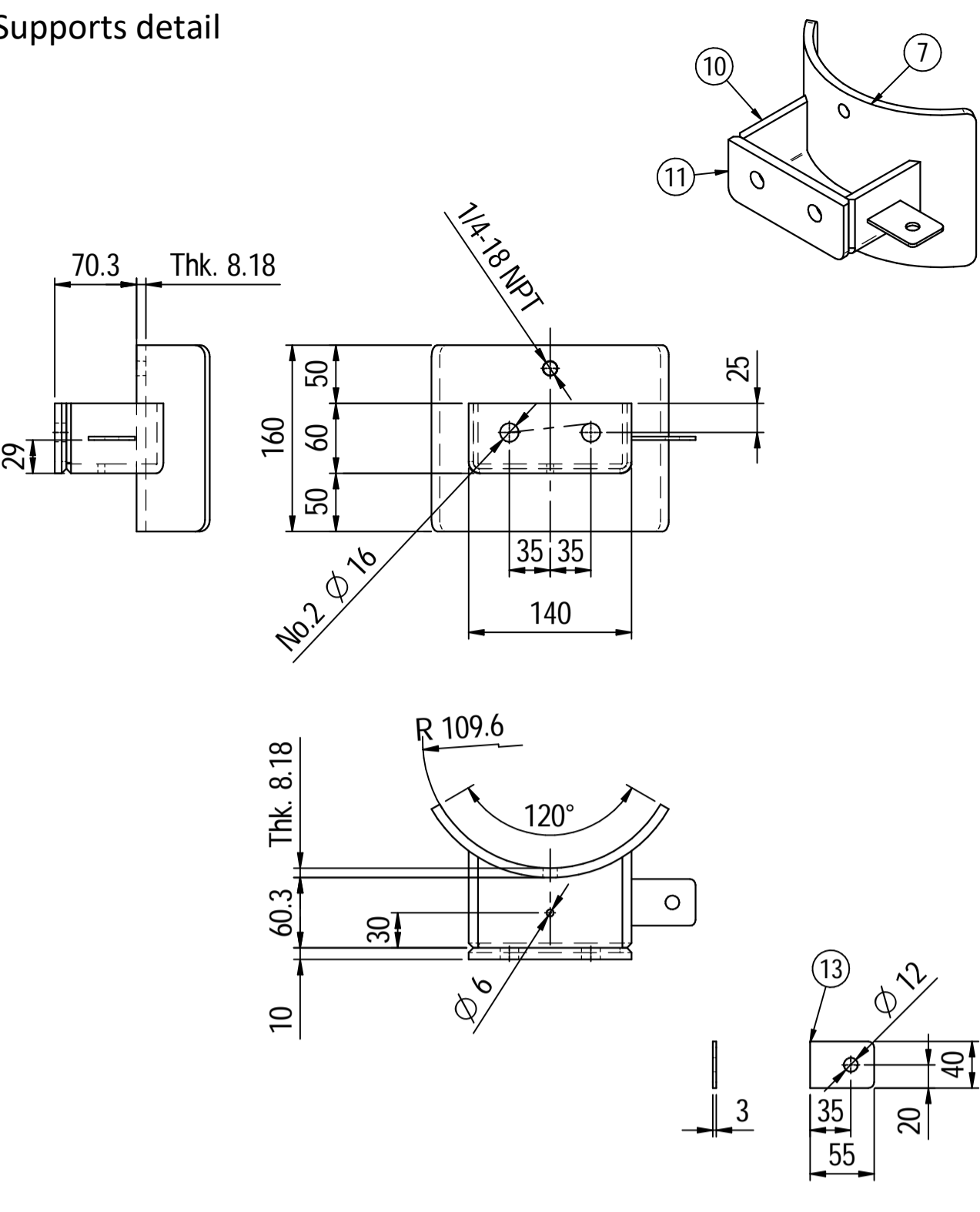


OWNER:  شرکت سست و سویی توهمه ایران (سهامی عامه)	BUSHEHR PETROCHEMICAL COMPANY MEG PLANT						EPC CONTRACTOR:  Chagalesh-Enerchimi-Steam Joint Venture BUPC-MEG PLANT PROJECT		
	PULSATION DAMPER DETAIL DRAWING FOR EMERGENCY INSTRUMENT AIR COMPRESSOR						 Netherlands		
MC :  شرکت سست و سویی توهمه ایران (سهامی عامه)	Project	Area	Phase	Unit	Dis.	Doc.	Seq.	Contract No : 52-98/445	
Owner Document Number: 17811-23D	BU	20	VD	303	ME	DWG	0080	Rev.:	Page
								00	1 of 4

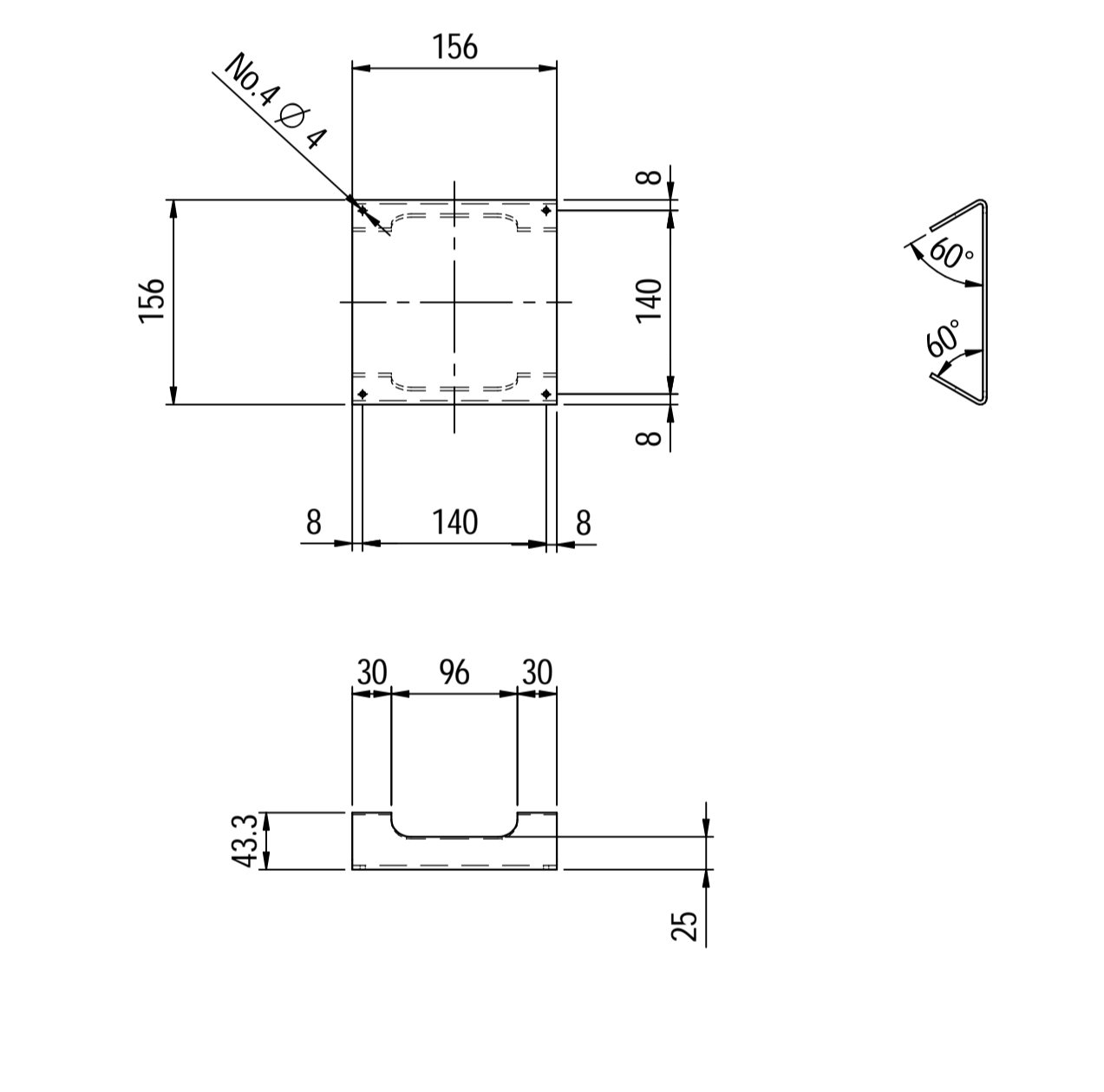
PULSATION DAMPER DETAIL DRAWING FOR EMERGENCY INSTRUMENT AIR COMPRESSOR

00	06/04/2022	For approval	KP	CL	JR	
Rev.	Date	Purpose of Issue	Prepared	Checked	Approved	AC Code
					Class: 1	Phase: P

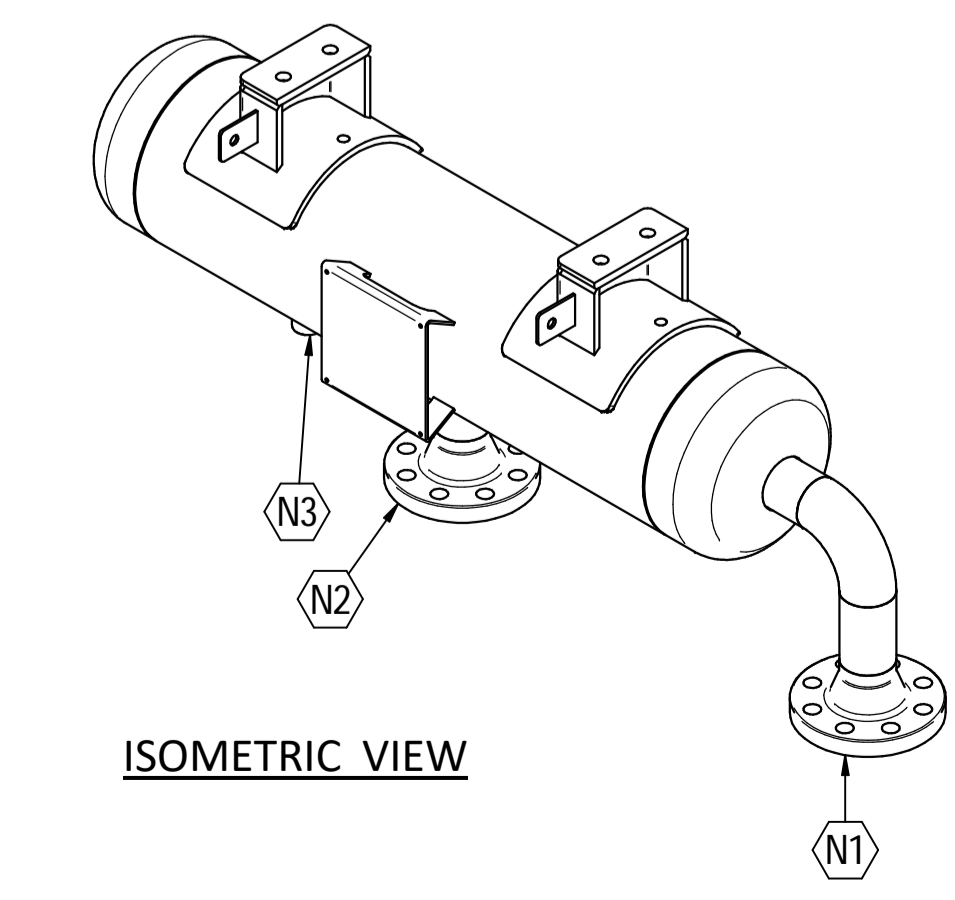
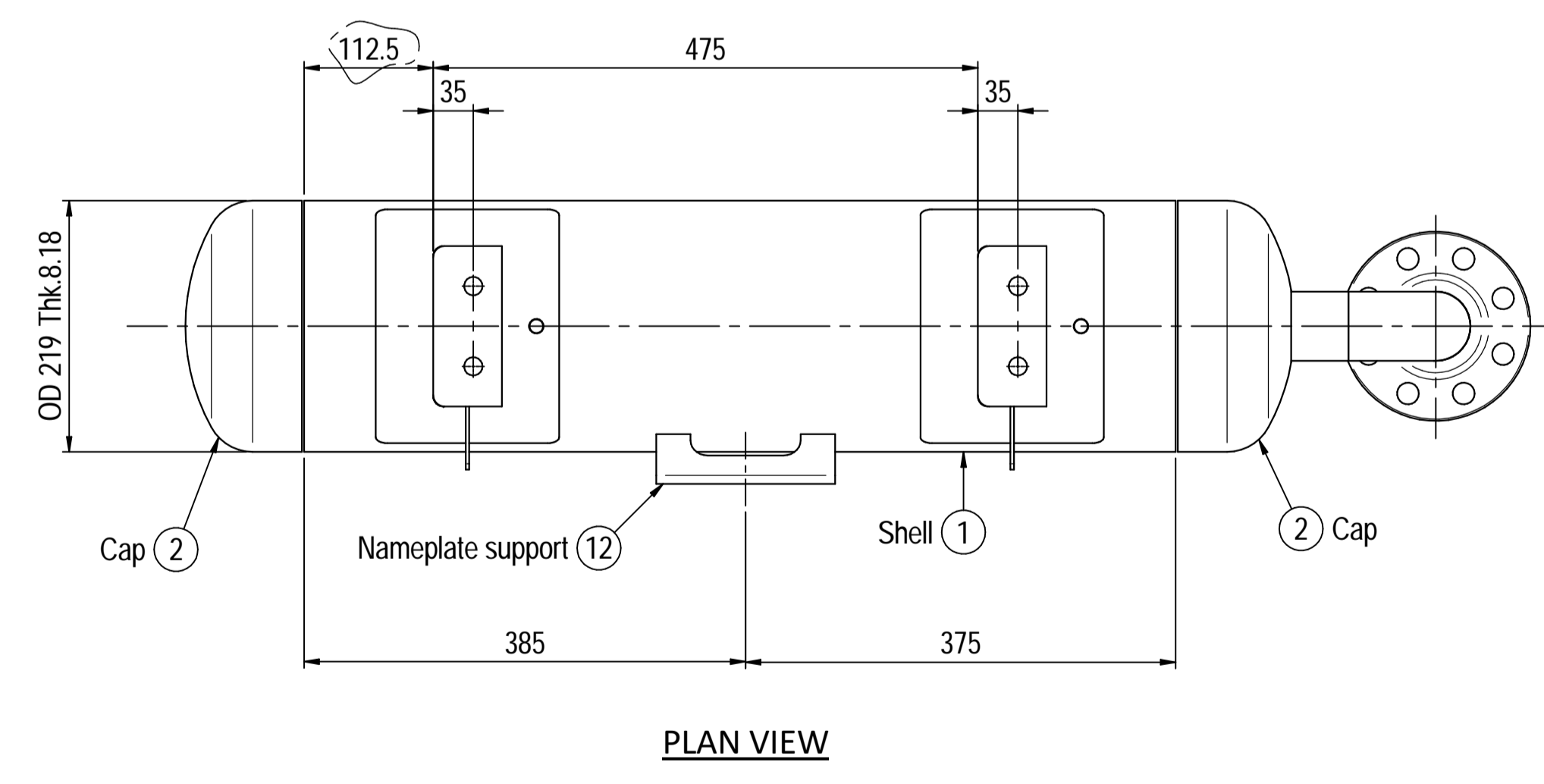
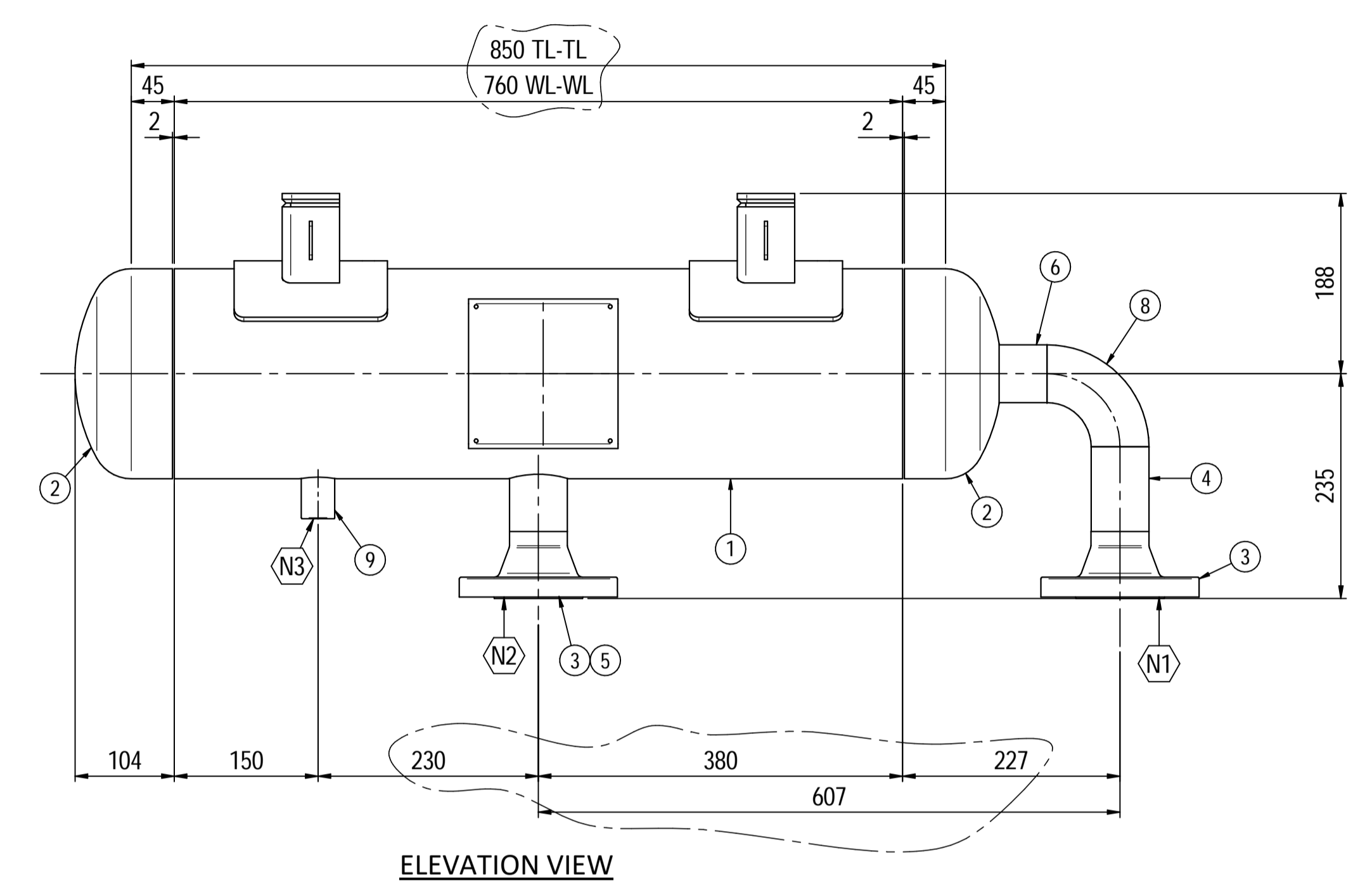
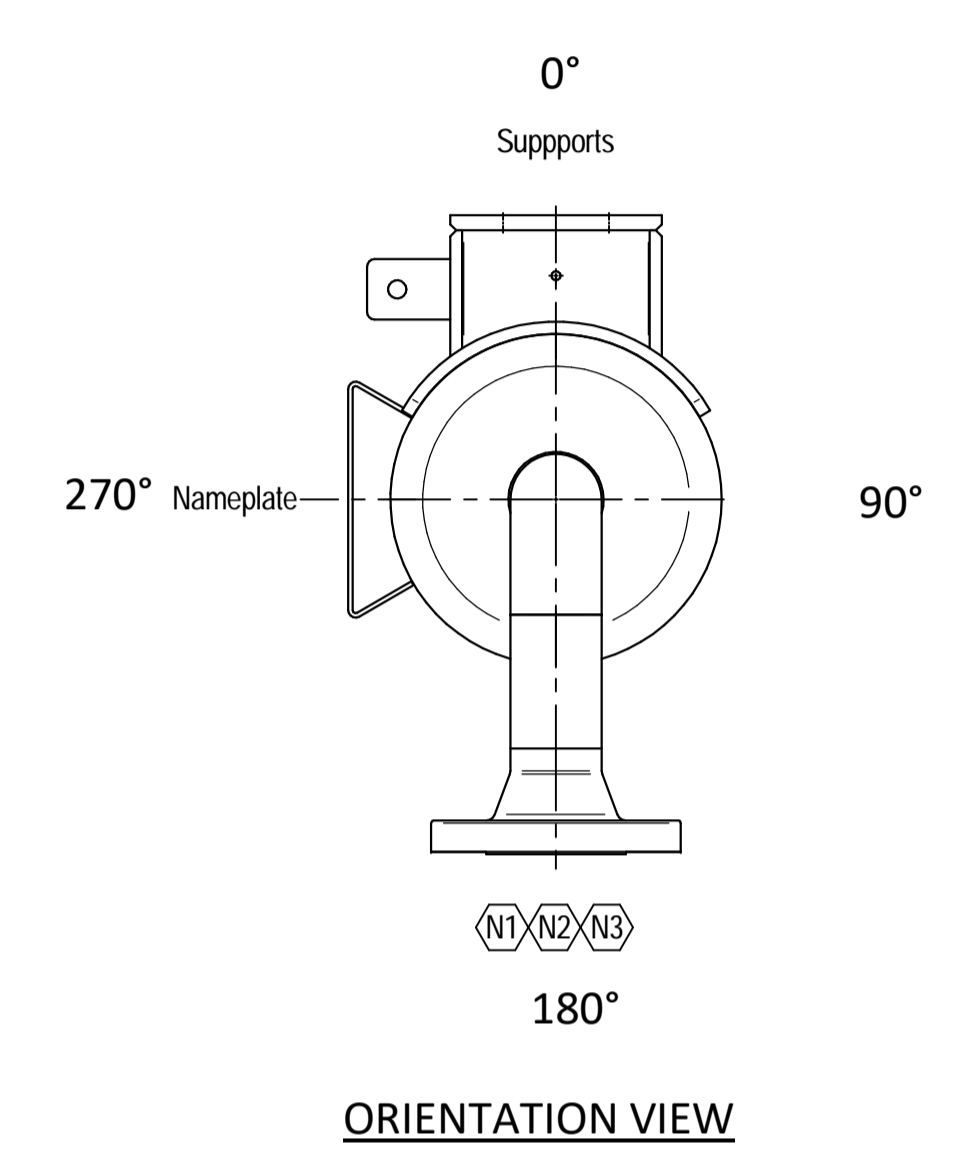
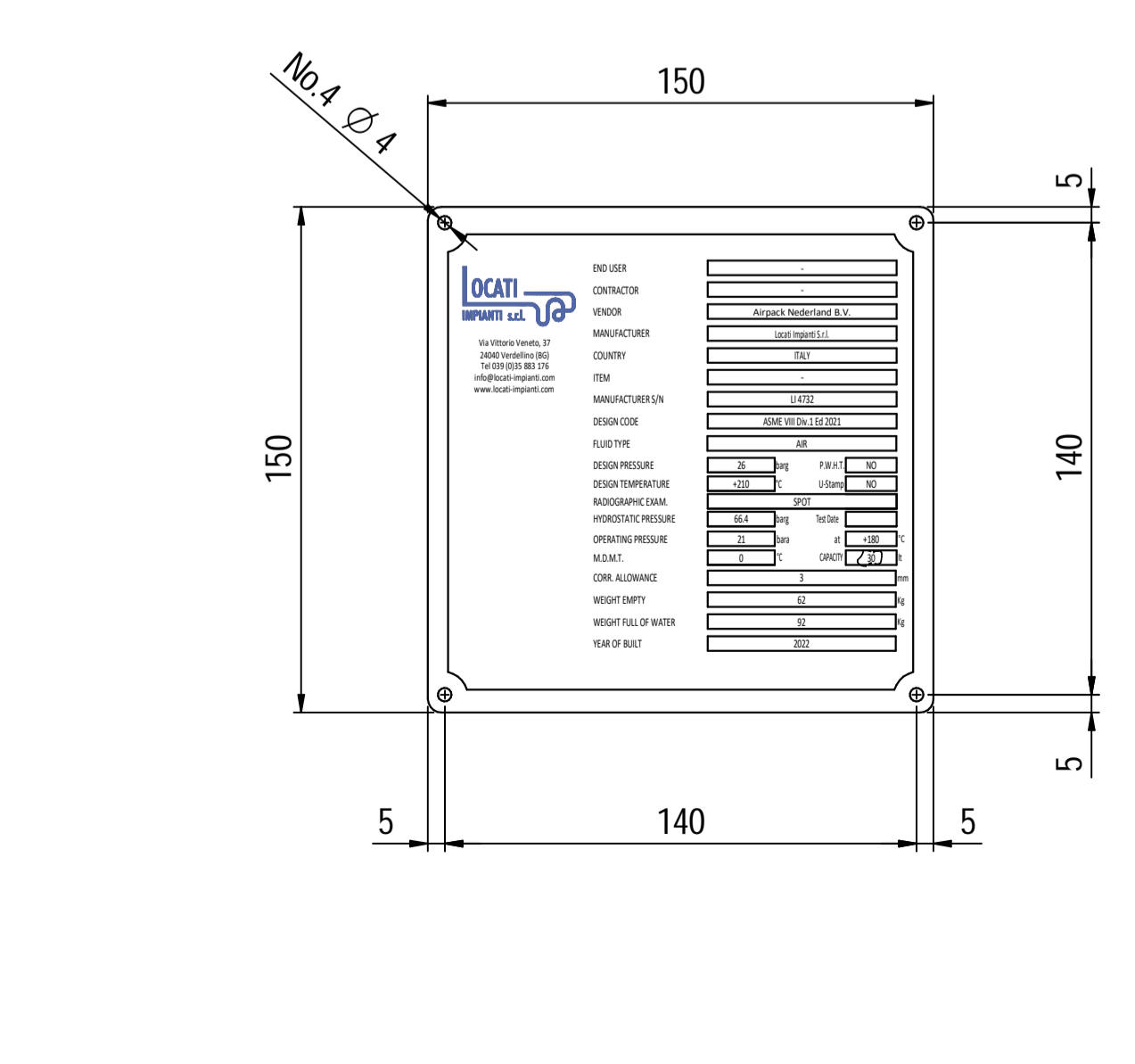
Supports detail



Nameplate support detail scale 1:5



Nameplate detail scale 1:2



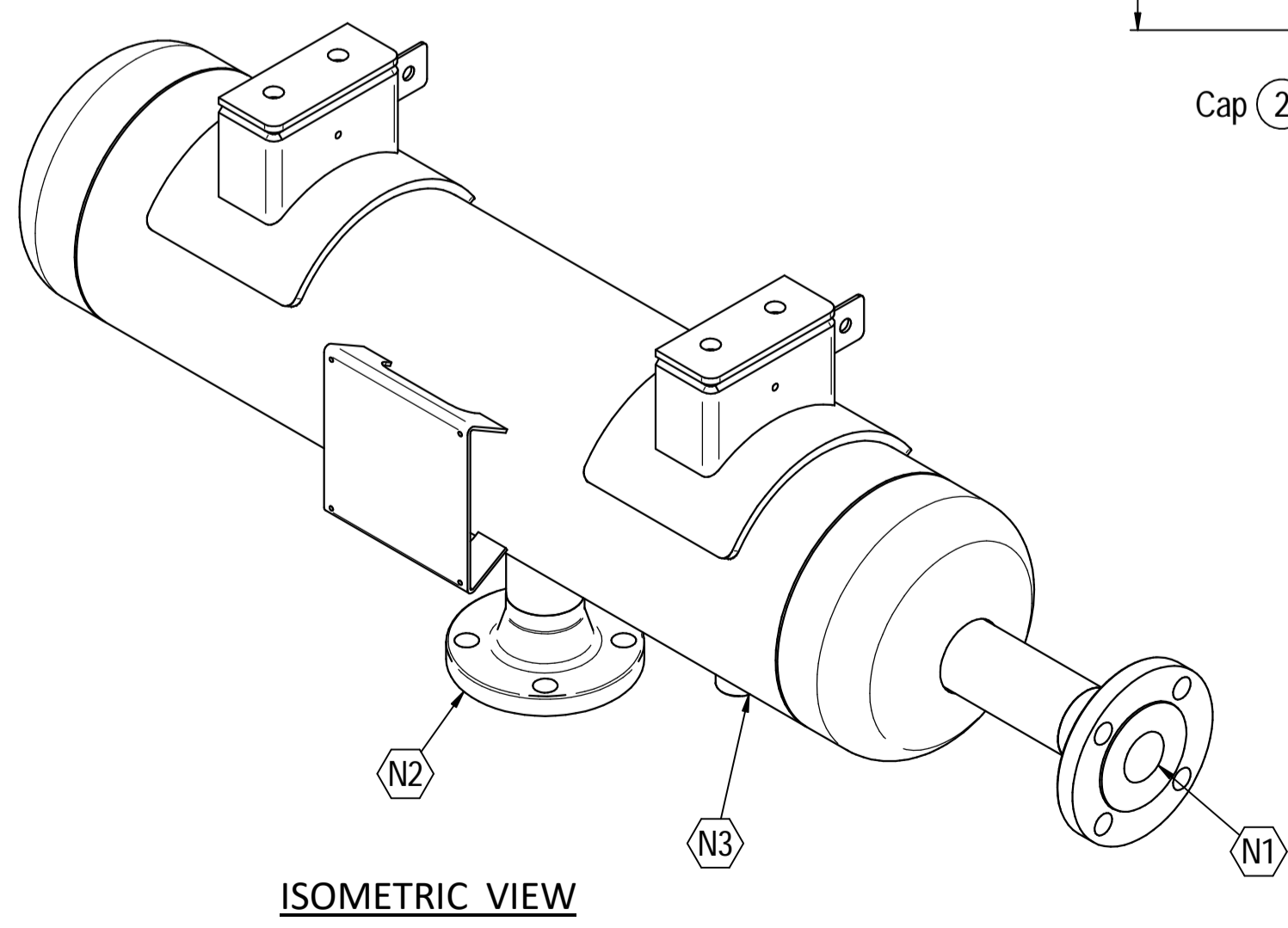
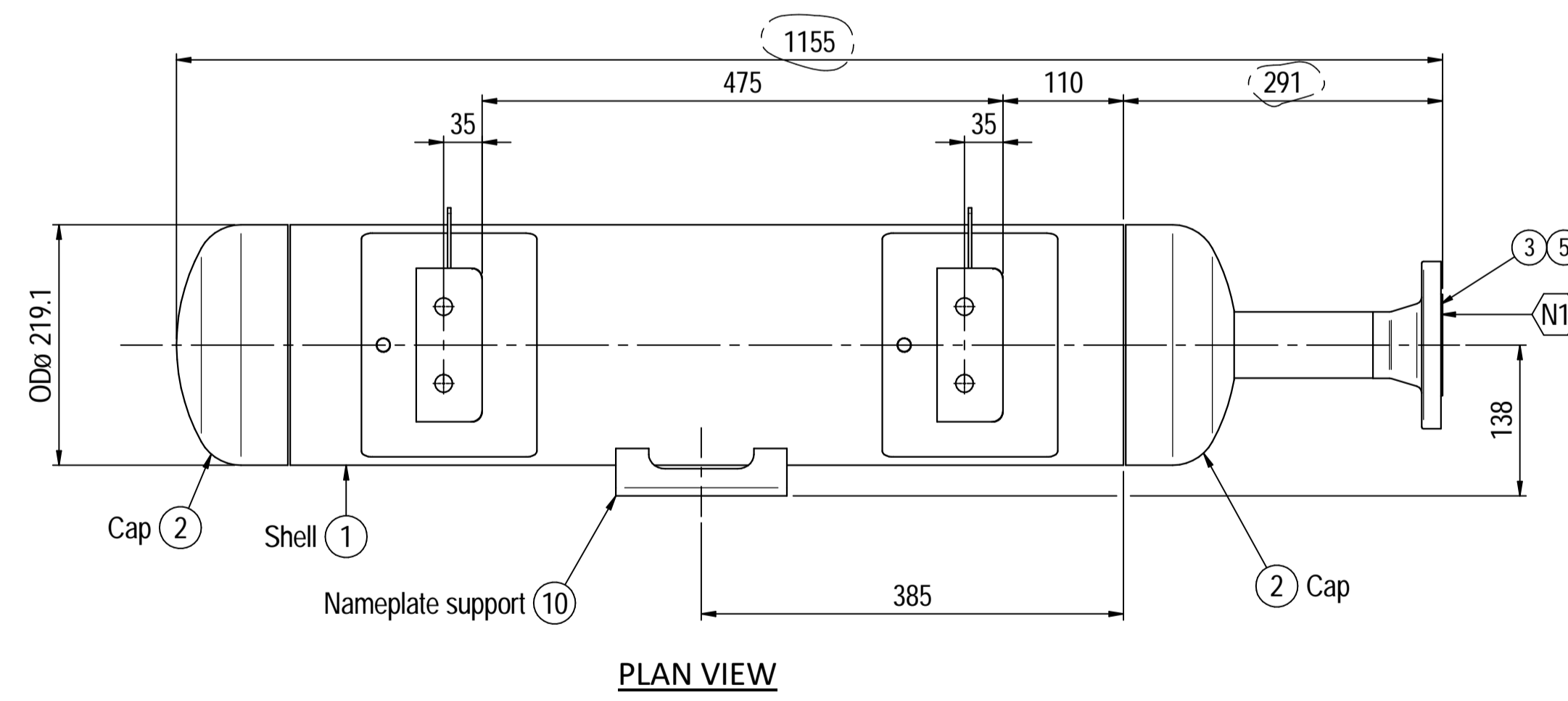
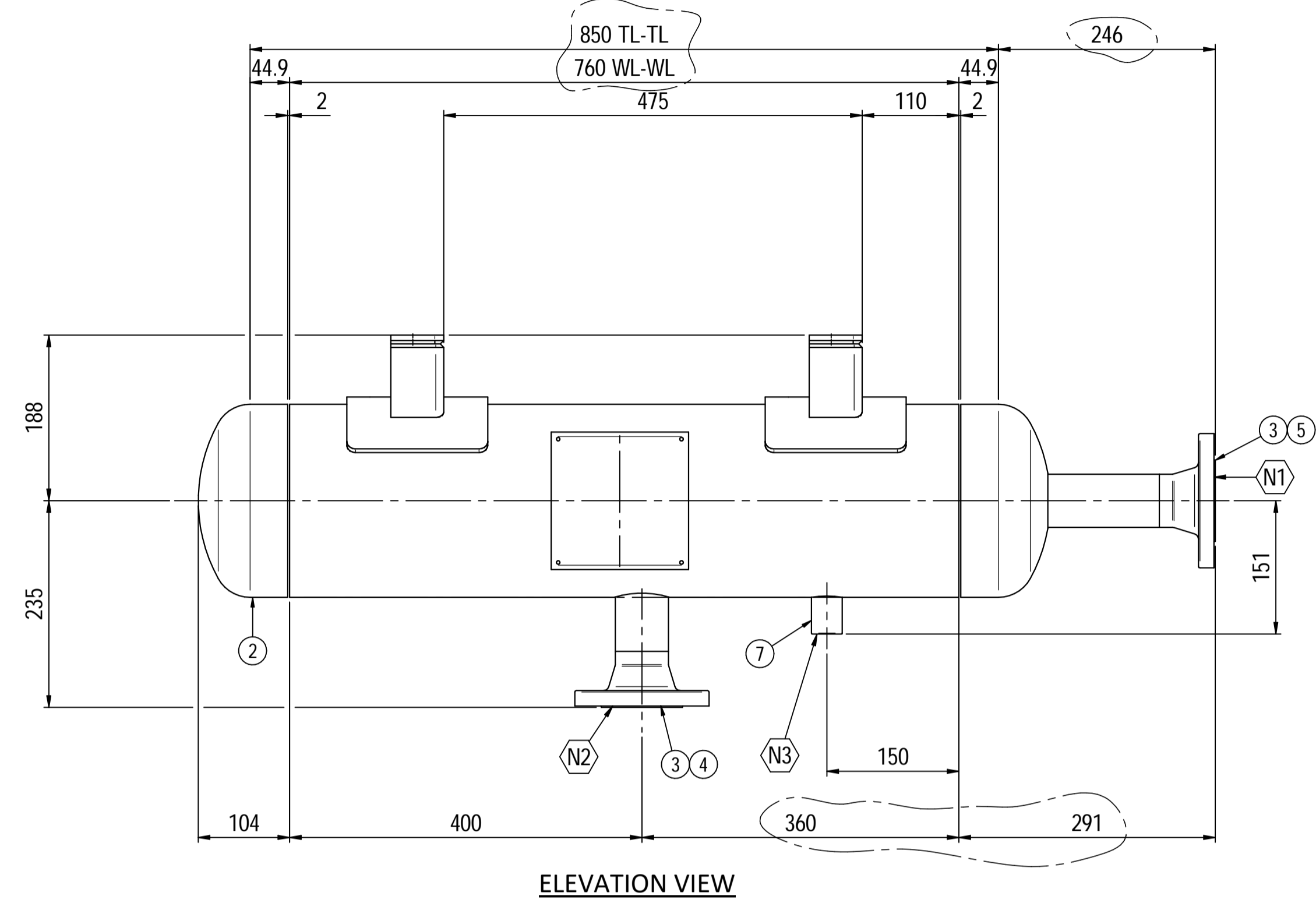
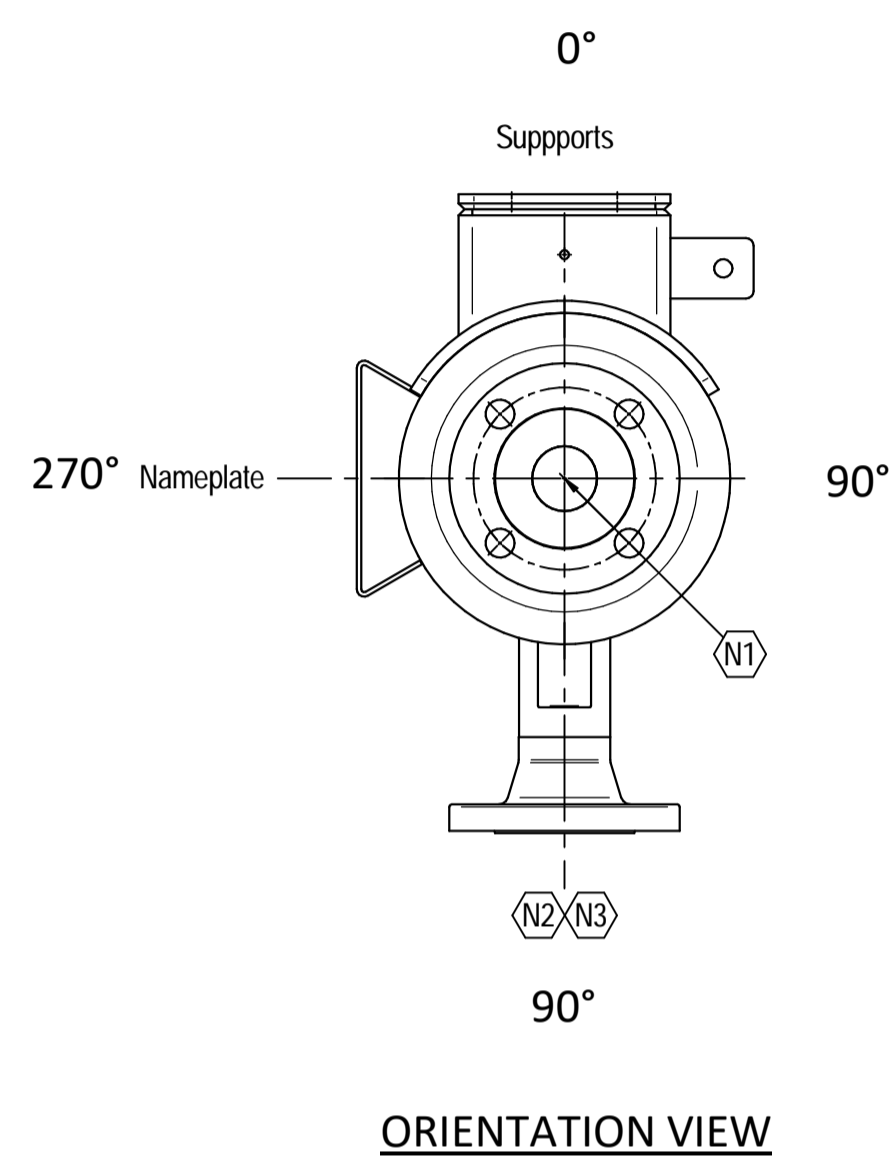
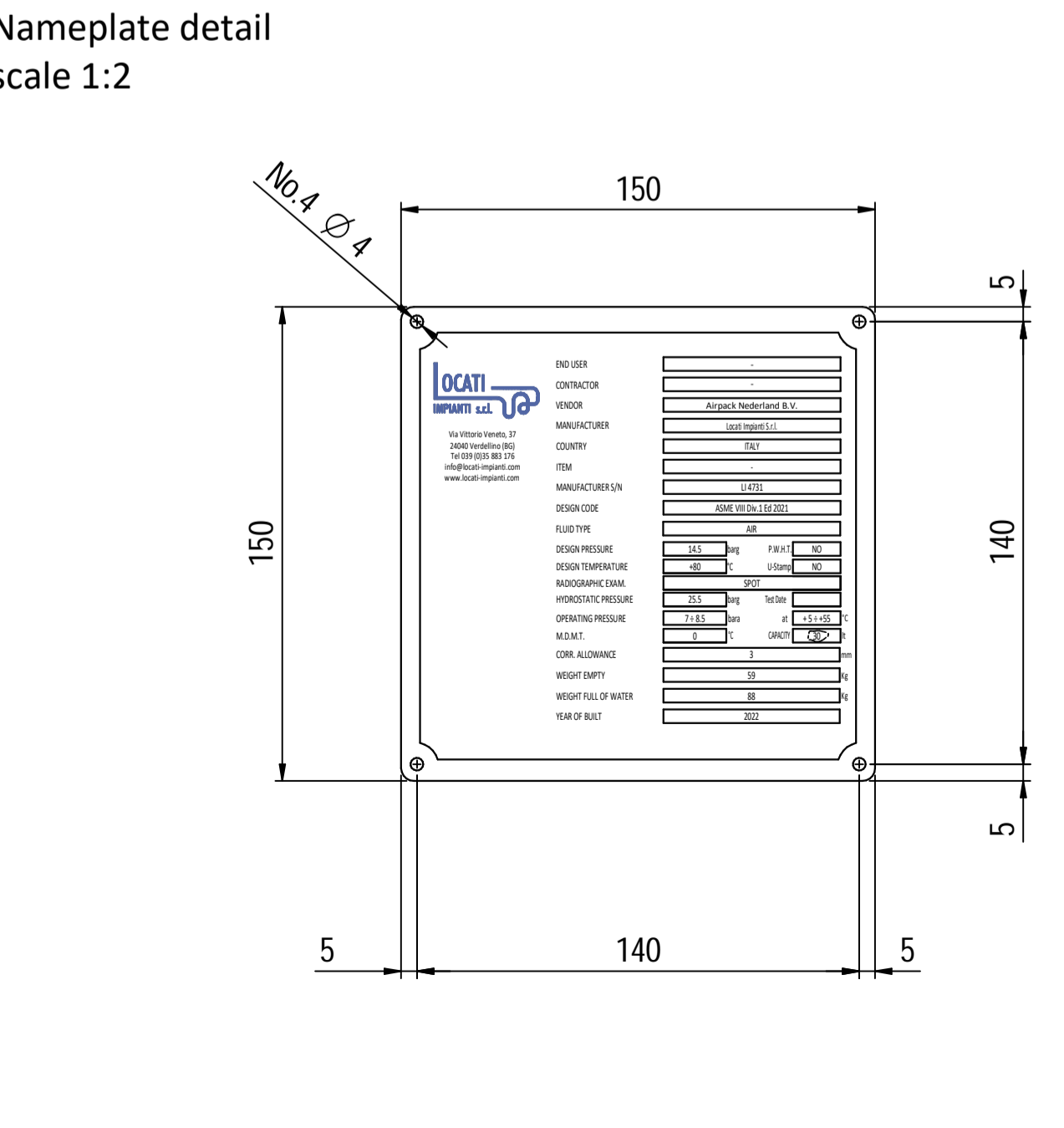
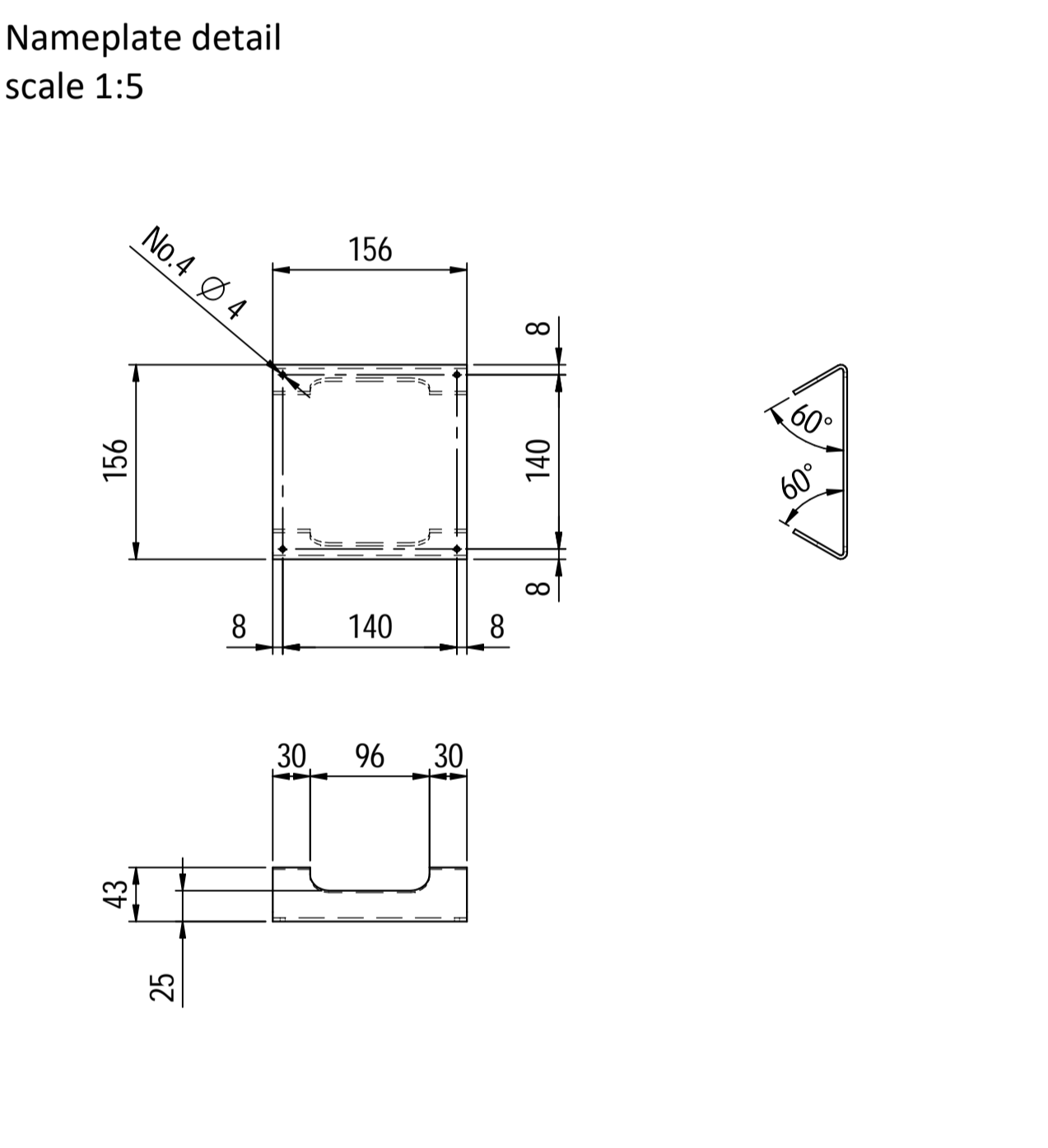
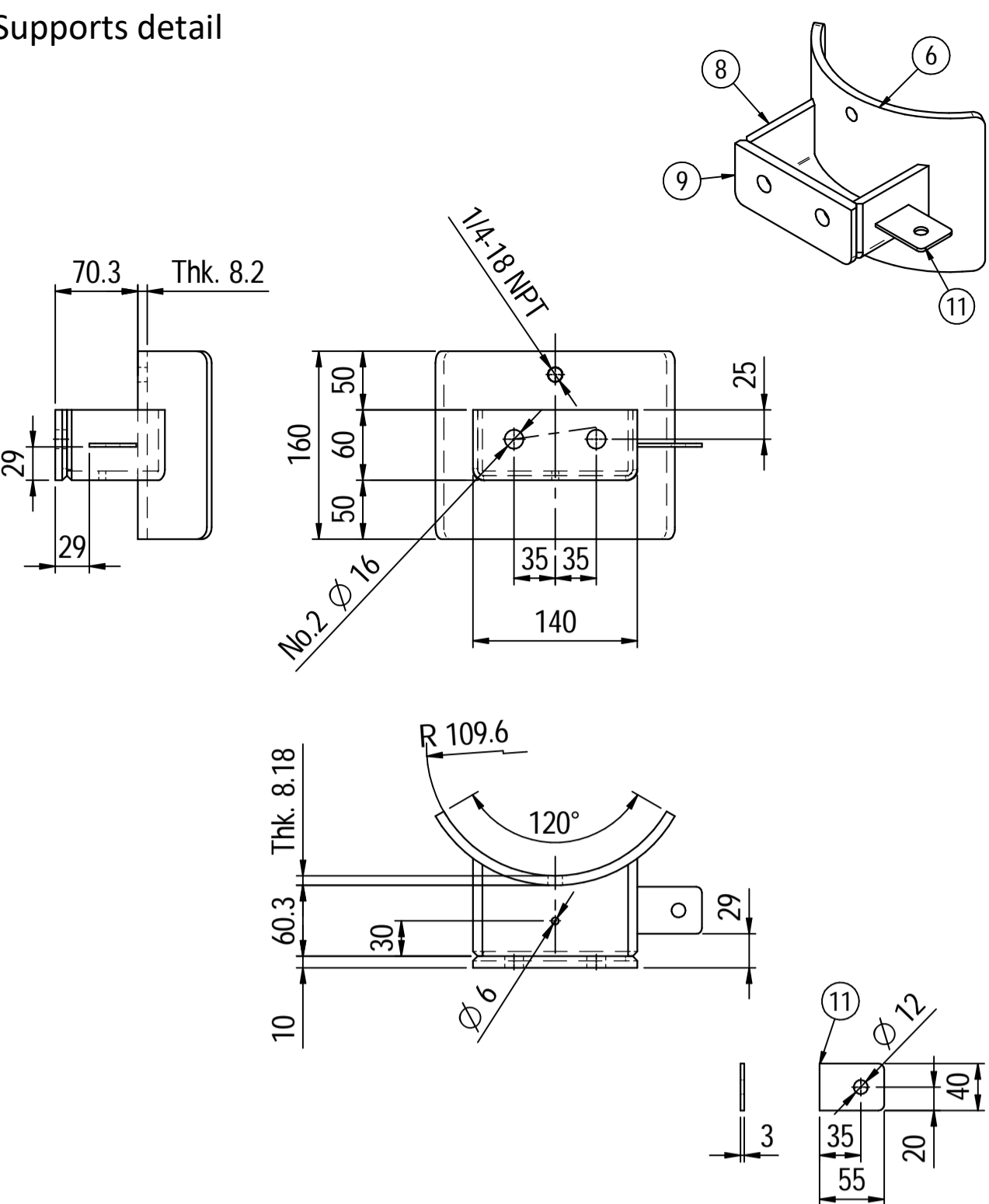
Material List					
Pos.	Q.ty	Description	Mat.	Cert.	
1	1	Shell by seamless pipe 8" Sch.40(L=760)	SA106 Gr.B	3.1	
2	2	Cap 8" Sch.40	A234 WPB	3.1	
3	2	Flange 2" WN #300 RF Sch.160	A105	3.1	
4	1	Seamless pipe 2" Sch160 L=88.5	A106 GrB	3.1	
5	1	Seamless pipe 2" Sch160 L=74	A106 GrB	3.1	
6	1	Seamless pipe 2" Sch160 L=63	A106 GrB	3.1	
7	2	Pad by pipe 8" Sch.40	A106 Gr.B	3.1	
8	1	Seamless elbow 2" 90° LR Sch.160	SA 234 WPB	3.1	
9	1	Coupling 1/2" NPT #6000	A105	3.1	
10	2	Plate 83x231 Thk.8	A516 70	3.1	
11	2	Plate 60x140 Thk.10	A516 70	3.1	
12	1	Nameplate support 156x241 Thk.3mm	A516 70	3.1	
13	2	Earthing Plate 55 x 40 Thk.3	A240 TP316L	3.1	

Note:
 1) Governing measurement S.I. unless otherwise specified;
 2) Flange bolt holes have to be straddled from main vessel center line in plan & vertical & horizontal centreline in elevation;
 3) Material: certification 3.1 EN 10204;
 4) All internal edge shall be rounded off;
 5) Nozzle fittings in accordance with ASME B16.5: 2013;
 6) Flange fittings in accordance with ASME B16.9: 2012;
 7) The flange dimensions are in accordance with ASME B16.5: 2013;
 8) All fillet welds not detailed on "WELDING MAP" or drawing shall have the weld; throated equal to 0,7 times the minimum thickness to be welded;
 9) All welds are continuous except where indicate;
 10) See document C220006CLC008 for vessel calculation.

ITEM	QTY	SERVICE	SIZE	PIPE O.D.	THK	RATING	FLANGE TYPE	FACE	O.D.	THK.	PAD RINFORZO	Tc
N3	1	DRAIN	1/2"	38.1	8.38	#6000	-	NPT-F	-	-	-	8.5 + 10
N2	1	AIR OUTLET	2"	60.3	8.74	#300	WN	RF	-	-	-	8.5 + 10
N1	1	AIR INLET	2"	60.3	8.74	#300	WN	RF	-	-	-	8.5 + 10

DATI DI PROGETTO / Design data			
FLUIDO	Air	COLLAUDO	Lloyd register
STATO FISICO DEL FLUIDO	Gas	Test	NATIONAL BOARD REGISTRATION
Physical state of fluid	Gas	NATIONAL BOARD REGISTRATION	NO
CODICE DI CALCOLO	ASME VIII Div. 1 Ed.2021	CANADIAN REGISTER NUMBER	NO
Construction code	ASME VIII Div. 1 Ed.2021	CANADIAN REGISTER NUMBER	NO
PRESSIONE DI ESERCIZIO	21 bara	SERVIZIO LETALE	NO
Operating pressure	21 bara	Lethal service	NO
PRESSIONE DI PROGETTO	26 barg	X-RAY	RT examination
Design pressure	26 barg	RT examination	Spot (RT3)
PRESSIONE ESTERNA	NO	LICUIDI PENETRANTI	NO
External pressure	NO	Dye penetrant extension	NO
PRESSIONE DI PROVA IDRAULICA	66.4 barg	ULTRASUONI	NO
Hydraulic test pressure	66.4 barg	Ultrasonic extension	NO
TEMPERATURA DI ESERCIZIO	+180°C	CONTROLLO MAGNETOSCOPICO	NO
Operating temperature	+180°C	Magnetic particle examination	NO
TEMPERATURA DI PROGETTO	+210°C	TALONE DI SALDATURA	NO
Design temperature	+210°C	Weld tests coupon	NO
SOVRAME TALLO DI CORROSIONE	3 mm	PROCEDIMENTO DI SALDATURA	See doc: C220006WBK013
Corrosion allowance	3 mm	Welding procedure	See doc: C220006WBK013
CAPACITA'	301	TIPO DI FONDO	CAP
Capacity	301	Head type	CAP
EFFICIENZA GIUNTI	0.85	FORMAZIONE FONDO	HOT
Joint efficiency	0.85	Head form	HOT
MAWP @ Design Temperature	38.66 barg @ +210°C	PESO A VUOTO	63 kg
MAWP(EXT)	NO	PESO IN ESERCIZIO	63 kg
MDMT @ MAWP	0 °C @ 38.66 barg	PESO PIENO D'ACQUA	92 kg
Full water weight	92 kg		
TRATTAMENTO TERMICO	NO	DATI DEL VENTO	-
P.W.H.T.	NO	Wind data	-
IMPACT TEST	NO	DATI SISMICI	-
Exemption	NO	Seismological data	-

Rev.	Descrizione / Description	Disegnato/Draw	Controllato/Checked	Approvato/Approved	Data/Date
02	Modified as per Customer comments	CM	MV	GL	02/04/2022
01	Modified earthing lug	CM	MV	GL	25/03/2022
00	FIRST ISSUE	CM	MV	GL	16/03/2022



Material List					
Pos.	Q.ty	Description	Mat.	Cert.	
1	1	Shell by seamless pipe 8" Sch.40 L=760	A106 Gr.B	3.1	
2	2	Cap 8" Sch40	A234 WPB	3.1	
3	2	Flange 2" WN 150# Sch160	SA105	3.1	
4	1	Seamless pipe 2" Sch160 L=74	A106 Gr.B	3.1	
5	1	Seamless pipe 2" Sch160 L=72	A106 Gr.B	3.1	
6	2	Pad by pipe 8" Sch.40	A106 Gr.B	3.1	
7	1	Coupling 1/2" NPT #6000	A105	3.1	
8	2	Plate 83x231 Thk.8	A516 70	3.1	
9	2	Plate 60x140 Thk.10	A516 70	3.1	
10	1	Nameplate support 156x241 Thk.3mm	A516 70	3.1	
11	2	Earthing Plate 55 x 40 Thk.3	A240 TP316L	3.1	

Note:
 1) Governing measurement S.I. unless otherwise specified;
 2) Flange bolt holes have to be straddled from main vessel center line in plan & vertical & horizontal centreline in elevation;
 3) Material: certification 3.1 EN 10204;
 4) All internal edge shall be rounded off;
 5) Nozzle fittings in accordance with ASME B16.5: 2013;
 6) Flange fittings in accordance with ASME B16.9: 2012;
 7) The flange dimensions are in accordance to ASME B16.5: 2013;
 8) All fillet welds not detailed on "WELDING MAP" or drawing shall have the weld; throated equal to 0,7 times the minimum thickness to be welded;
 9) All welds are continuous except where indicate;
 10) See document C220006CLC007 for vessel calculation.

ITEM	QTY	SERVICE	SIZE	O.D.	THK	RATING	TYPE	FACE	O.D.	THK.	Tc
N3	1	DRAIN	1/2"	38.1	8.38	#6000	-	NPT-F	-	-	8.5 ± 10
N2	1	AIR OUTLET	2"	60.3	8.74	#150	WN	RF	-	-	8.5 ± 10
N1	1	AIR INLET	2"	60.3	8.74	#150	WN	RF	-	-	8.5 ± 10

DATI DI PROGETTO / Design data			
FLUIDO	Air	COLLAUDO	Test
STATO FISICO DEL FLUIDO	Gas	NATIONAL BOARD REGISTRATION	NO
STATO FISICO DEL FLUIDO	Gas	NATIONAL BOARD REGISTRATION	NO
CODICE DI CALCOLO	ASME VIII Div. 1 Ed.2021	CANADIAN REGISTER NUMBER	NO
PRESSIONE DI ESERCIZIO	7 - 8.5 barg	SERVIZIO LETALE	NO
PRESSIONE DI PROGETTO	14.5 barg	R-T EXAMINATION	Spot (RT3)
PRESSIONE ESTERNA	NO	LICUIDI PENETRANTI	NO
PRESSIONE DI PROVA IDRAULICA	25.5 barg	ULTRASUONI	NO
TEMPERATURA DI ESERCIZIO	5 + 55°C	CONTROLLO MAGNETOSCOPICO	NO
TEMPERATURA DI PROGETTO	80 °C	X-RAY	NO
SOVRAME TALLO DI CORROSIONE	3 mm	PROCEDIMENTO DI SALDATURA	See doc: C220006WBK013
CAPACITA'	30 l	TIPO DI FONDO	CAP
EFFICIENZA GIUNTI	0.85	FORMATURA FONDO	HOT
MAWP @ Design Temperature	18.3 barg @ +80°C	PESO A VUOTO	59 kg
MAWP(EXT)	NO	PESO IN ESERCIZIO	59 kg
MDMT @ MAWP	0 °C @ 18.3 barg	PESO PIENO D'ACQUA	88 kg
TRATTAMENTO TERMICO	NO	DATI DEL VENTO	-
IMPACT TEST	NO	DATI SISMICI	-

Rev.	Descrizione / Description	Disegnato/Draw	Controllato/Checked	Approvato/Approved	Data/Date
02	Modified as per Customer comments	CM	MV	GL	02/04/2022
01	Modified earthing lug	CM	MV	GL	25/03/2022
00	FIRST ISSUE	CM	MV	GL	16/03/2022

Objetto/Object: PULSATION DAMPER INLET

Scale/Scale: 1 : 5
 Comm. N°/Job No.: C220006
 Cliente/Customer: Airpack Nederland B.V.
 Ord. No.: 18498-VV-0901
 Dis. N°/Dwg No.: C220006DWG001
 Rev. 02

LOCATI IMPIANTI s.r.l.