

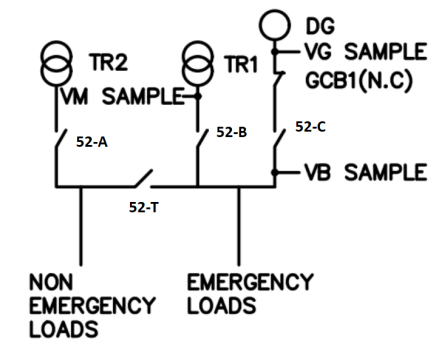
# Off-Skid Panel Wiring Diagram (Synchronizing and Protection)

**GENERAL KEY**

Note1: Minimum wiring size for control= 1.5mm<sup>2</sup>.  
 Note2: Minimum wiring size for AC power=2.5mm<sup>2</sup>.  
 Note3: Terminal for CT connection shall be jumper link type.  
 Note4: Minimum conductor size for CTs= 4 mm<sup>2</sup>.  
 Note5: The control terminal blocks shall include not less than 15% spare terminals.  
 Note6: All wires shall be terminated in clamp type terminals such that direct contact between screw, bolt or nut and conductor is avoided.

REFERENCE DRAWING	DWG. No.
Single Line Diagram	BU-20-VD-322-EL-SLD-0007
Gen-Set Package Signal List	BU-20-VD-322-EL-LST-0008

**GENERAL KEY**



Rev.	Date	Purpose of Issue (P.O.I)	Prep.	Chkd.	Appr.	AC.
06	20/Nov/21	AFC	F.MRD	F.MRD	E.SHJ	-
05	06/Nov/21	FOR APPROVAL	F.MRD	F.MRD	E.SHJ	-
04	11/Oct/21	FOR APPROVAL	F.MRD	F.MRD	E.SHJ	-
03	25/Sep/21	FOR APPROVAL	F.MRD	F.MRD	E.SHJ	-
02	30/Agu/21	FOR APPROVAL	F.MRD	F.MRD	E.SHJ	-
01	27/JULY/21	FOR APPROVAL	F.MRD	A.OMD	E.SHJ	-
00	29/JUNE/21	FOR APPROVAL	A.OMD	A.OMD	E.SHJ	-

**Owner:**

**MC:**

**CONTRACTOR:**

**VENDOR:**

**PROJECT:**  
BUSHEHR PETROCHEMICAL COMPANY OLEFIN PLANT

**DRAWING TITLE:**  
Off-Skid Panel Wiring Diagram(Synchronizing & Protection)

CONTRACT No.	SCALE	SIZE	CLASS	PHASE
52-98/4444	NON	A3	1	P

Document .No.	Project	Area	Phase	MRQ No.	Dis.	Doc.	Sec.	Page No.	Rev. No.
OWNER DOC.No.	BU	20	VD	322	EL	SLD	0010	1	006

GENERAL KEY

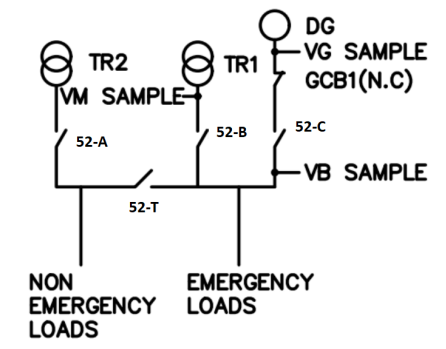
Note1: Minimum wiring size for control= 1.5mm2.  
 Note2: Minimum wiring size for AC power=2.5mm2.  
 Note3: Terminal for CT connection shall be jumper link type.  
 Note4: Minimum conductor size for CTs= 4 mm2.  
 Note5: The control terminal blocks shall include not less than 15% spare terminals.  
 Note6: All wires shall be terminated in clamp type terminals such that direct contact between screw, bolt or nut and conductor is avoided.

REFERENCE DRAWING	DWG. No.
Single Line Diagram	BU-20-VD-322-EL-SLD-0007
Gen-Set Package Signal List	BU-20-VD-322-EL-LST-0008

Revision Index

No.	Description	Sh. No.	Revision							Remark
			00	01	02	03	04	05	06	
01	Cover Page	01	X	X	X					
02	Revision Index	02	X	X	X			X		
03	Legend item	03	X	X	X		X	X		
04	Three Line Diagram	04	X	X	X	X	X	X	X	
05	AC/DC Feed	05	X	X	X		X	X	X	
06	WoodWard Wiring	06	X	X	X		X	X	X	
07	Relay Output	07	X	X	X	X				
08	Relay Input	08	X	X	X		X			
09	ACB	09	X	X	X		X	X		
10	Thytronic	10	X	X	X			X		
11	Fuel Level	11	X	X	X		X	X		
12	Part List	12	X	X	X		X	X		
13	Panel Layout	14	X	X	X		X			
14	Blank Page	15	X	X	X					
15	Blank Page	16	X	X	X					
16	Blank Page	17	X	X	X					

GENERAL KEY



Rev.	Date	Purpose of Issue (P.O.I)	Prep.	Chkd.	Appr.	AC.
06	20/Nov/21	AFC	F.MRD	F.MRD	E.SHJ	-
05	06/Nov/21	FOR APPROVAL	F.MRD	F.MRD	E.SHJ	-
04	11/Oct/21	FOR APPROVAL	F.MRD	F.MRD	E.SHJ	-
03	25/Sep/21	FOR APPROVAL	F.MRD	F.MRD	E.SHJ	-
02	30/Agu/21	FOR APPROVAL	F.MRD	F.MRD	E.SHJ	-
01	27/JULY/21	FOR APPROVAL	F.MRD	A.OMD	E.SHJ	-
00	29/JUNE/21	FOR APPROVAL	A.OMD	A.OMD	E.SHJ	-

Owner:

MC:

CONTRACTOR:

VENDOR:

PROJECT: BUSHEHR PETROCHEMICAL COMPANY OLEFIN PLANT

DRAWING TITLE: Off-Skid Panel Wiring Diagram(Synchronizing & Protection)

CONTRACT No.	SCALE	SIZE	CLASS	PHASE
52-98/4444	NON	A3	1	P

Document .No.	Project	Area	Phase	MRQ No.	Dis.	Doc.	Sec.	Page No.	Rev. No.
OWNER DOC.No.	BU	20	VD	322	EL	SLD	0010	2	006

# IEC\_symbol

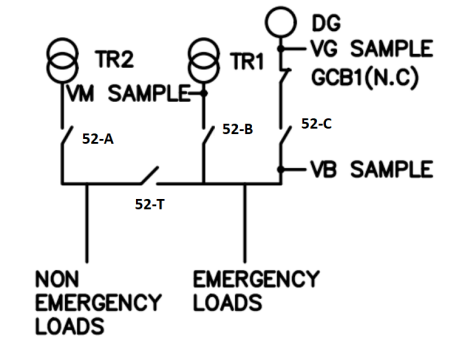
Potential transformer		Three-phase synchronous generator		Fluorescent lamp without PE	
Terminal		Current transformer		Limit switch, NC contact	
Ground, general		Power circuit breaker, four-pole (Drawable)		AC motor for ventilator / fan without grounding	
Interruption point		Three-phase transformer, star-delta connection		Protective ground / protective conductor connection	
Selector switch		Fuse switch disconnector		Heating element with PE	
Potential transformer		NO contact		NO temperature switch	
Ammeter		NO contact		Relay coil	
Voltmeter					
Frequency meter					
Ground fault current circuit breaker		Circuit breaker			
				Test Block	

## GENERAL KEY

Note1: Minimum wiring size for control= 1.5mm<sup>2</sup>.  
 Note2: Minimum wiring size for AC power=2.5mm<sup>2</sup>.  
 Note3: Terminal for CT connection shall be Jumper link type.  
 Note4: Minimum conductor size for CTs= 4 mm<sup>2</sup>.  
 Note5: The control terminal blocks shall include not less than 15% spare terminals.  
 Note6: All wires shall be terminated in clamp type terminals such that direct contact between screw, bolt or nut and conductor is avoided.

REFERENCE DRAWING	DWG. No.
Single Line Diagram	BU-20-VD-322-EL-SLD-0007
Gen-Set Package Signal List	BU-20-VD-322-EL-LST-0008

## GENERAL KEY



Rev.	Date	Purpose of Issue (P.O.I)	Prep.	Chkd.	Appr.	AC.
06	20/Nov/21	AFC	F.MRD	F.MRD	E.SHJ	-
05	06/Nov/21	FOR APPROVAL	F.MRD	F.MRD	E.SHJ	-
04	11/Oct/21	FOR APPROVAL	F.MRD	F.MRD	E.SHJ	-
03	25/Sep/21	FOR APPROVAL	F.MRD	F.MRD	E.SHJ	-
02	30/Agu/21	FOR APPROVAL	F.MRD	F.MRD	E.SHJ	-
01	27/JULY/21	FOR APPROVAL	F.MRD	A.OMD	E.SHJ	-
00	29/JUNE/21	FOR APPROVAL	A.OMD	A.OMD	E.SHJ	-

Owner:

MC:

CONTRACTOR:

VENDOR:

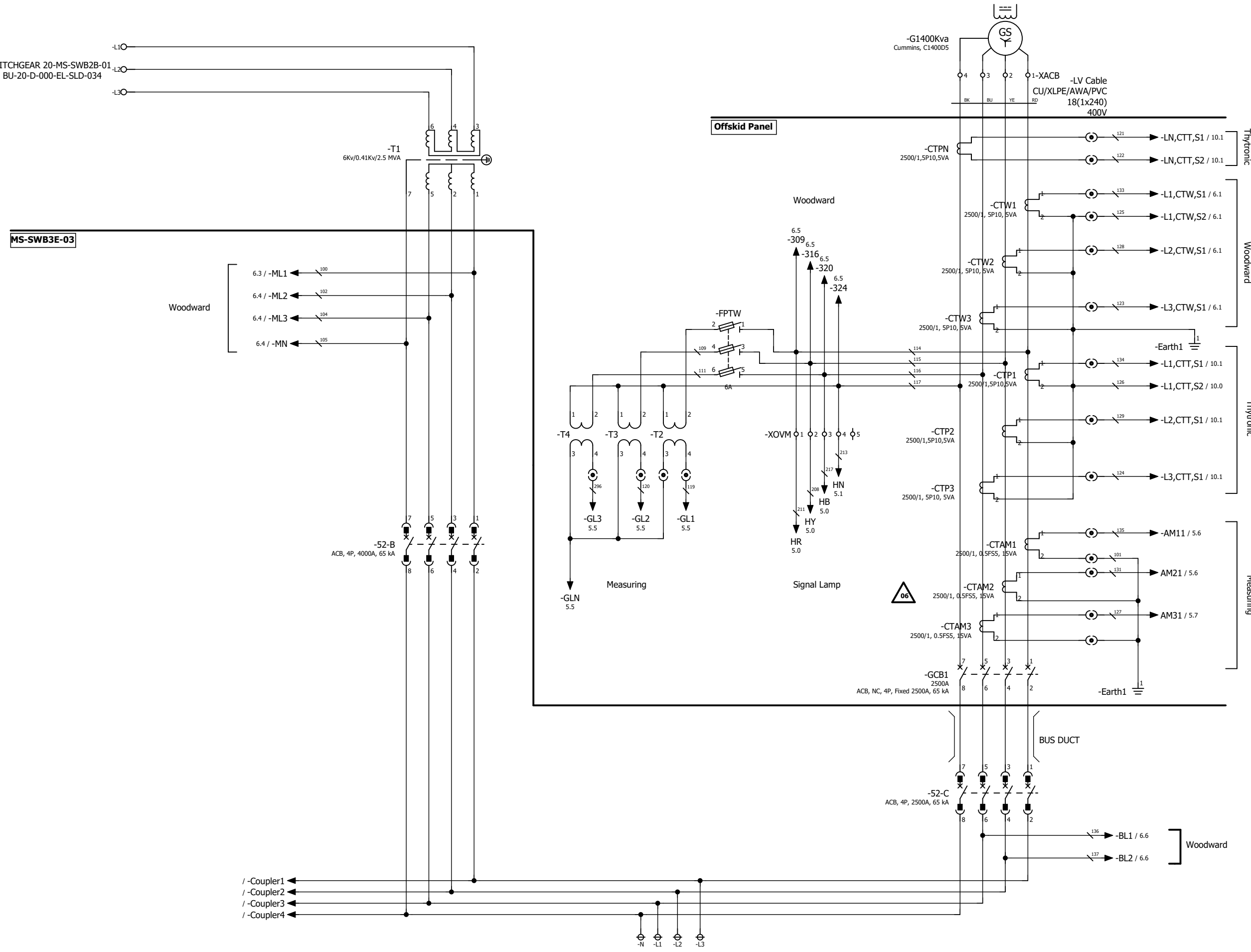
PROJECT:  
 BUSHEHR PETROCHEMICAL COMPANY OLEFIN PLANT

DRAWING TITLE:  
 Off-Skid Panel Wiring Diagram(Synchronizing & Protection)

CONTRACT No.	SCALE	SIZE	CLASS	PHASE
52-98/4444	NON	A3	1	P

Document No.	Project	Area	Phase	MRQ No.	Dis.	Doc.	Sec.	Page No.	Rev. No.
OWNER DOC.No.	BU	20	VD	322	EL	SLD	0010	3	00

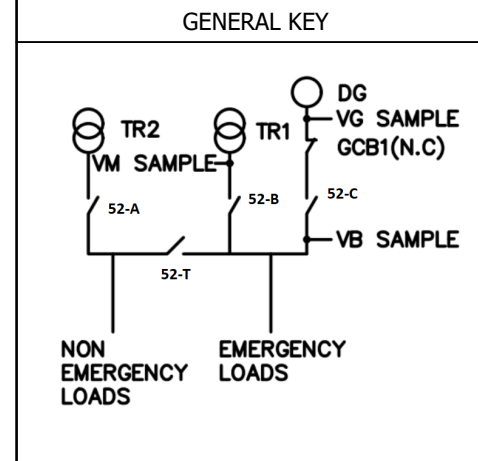
FROM 6KV SWITCHGEAR 20-MS-SWB2B-01  
SEE DWG. NO. BU-20-D-000-EL-SLD-034



**GENERAL KEY**

Note1: Minimum wiring size for control= 1.5mm2.  
 Note2: Minimum wiring size for AC power=2.5mm2  
 Note3: Terminal for CT connection shall be Jumper link type.  
 Note4: Minimum conductor size for CTs= 4 mm2.  
 Note5: The control terminal blocks shall include not less than 15% spare terminals.  
 Note6: All wires shall be terminated in clamp type terminals such that direct contact between screw, bolt or nut and conductor is avoided.

REFERENCE DRAWING	DWG. No.
Single Line Diagram	BU-20-VD-322-EL-SLD-0007
Gen-Set Package Signal List	BU-20-VD-322-EL-LST-0008



Rev.	Date	Purpose of Issue (P.O.I)	Prep.	Chkd.	Appr.	AC.
06	20/Nov/21	AFC	F.MRD	F.MRD	E.SHJ	-
05	06/Nov/21	FOR APPROVAL	F.MRD	F.MRD	E.SHJ	-
04	11/Oct/21	FOR APPROVAL	F.MRD	F.MRD	E.SHJ	-
03	25/Sep/21	FOR APPROVAL	F.MRD	F.MRD	E.SHJ	-
02	30/Agu/21	FOR APPROVAL	F.MRD	F.MRD	E.SHJ	-
01	27/JULY/21	FOR APPROVAL	F.MRD	A.OMD	E.SHJ	-
00	29/JUNE/21	FOR APPROVAL	A.OMD	A.OMD	E.SHJ	-

**Owner:**

**MC:**

**CONTRACTOR:**

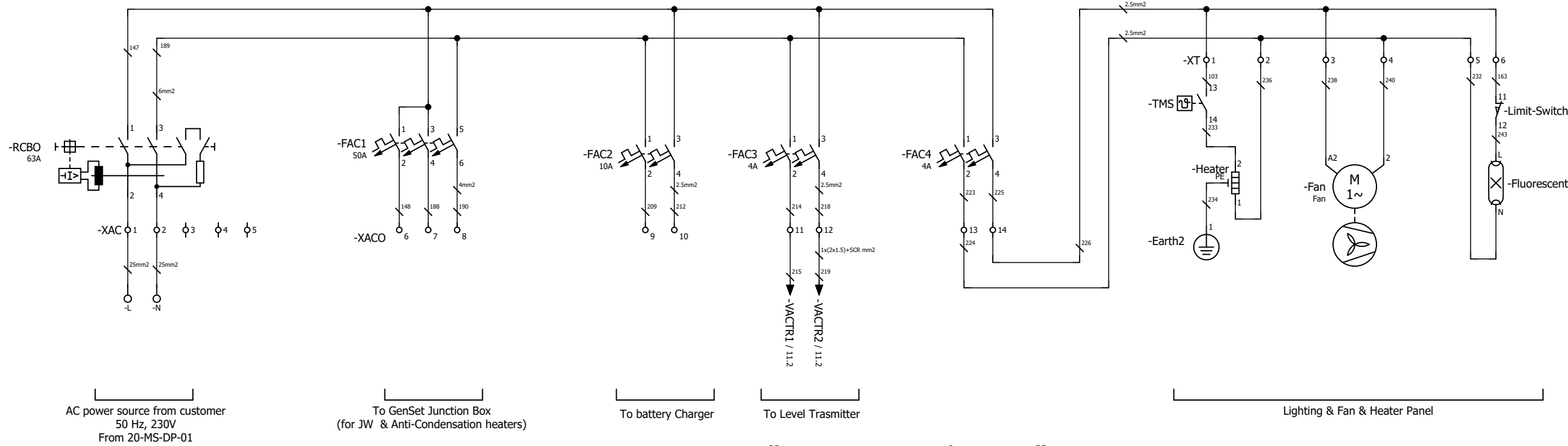
**VENDOR:**

**PROJECT:**  
BUSHEHR PETROCHEMICAL COMPANY OLEFIN PLANT

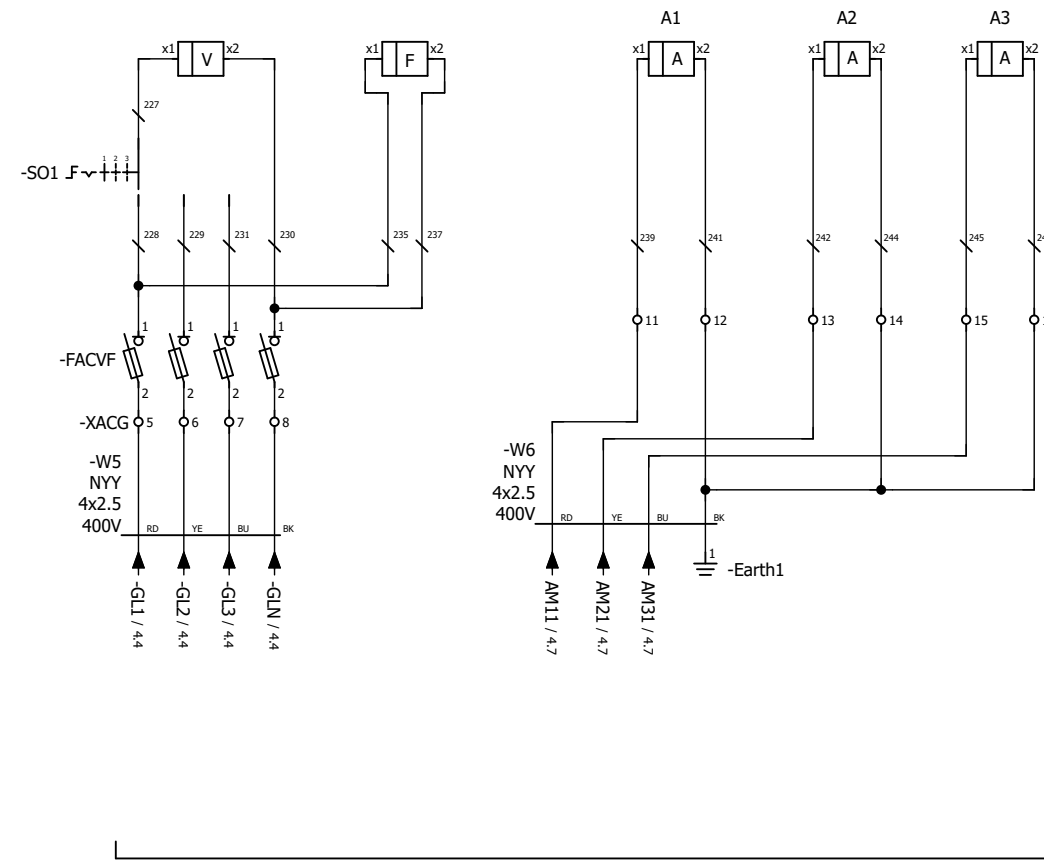
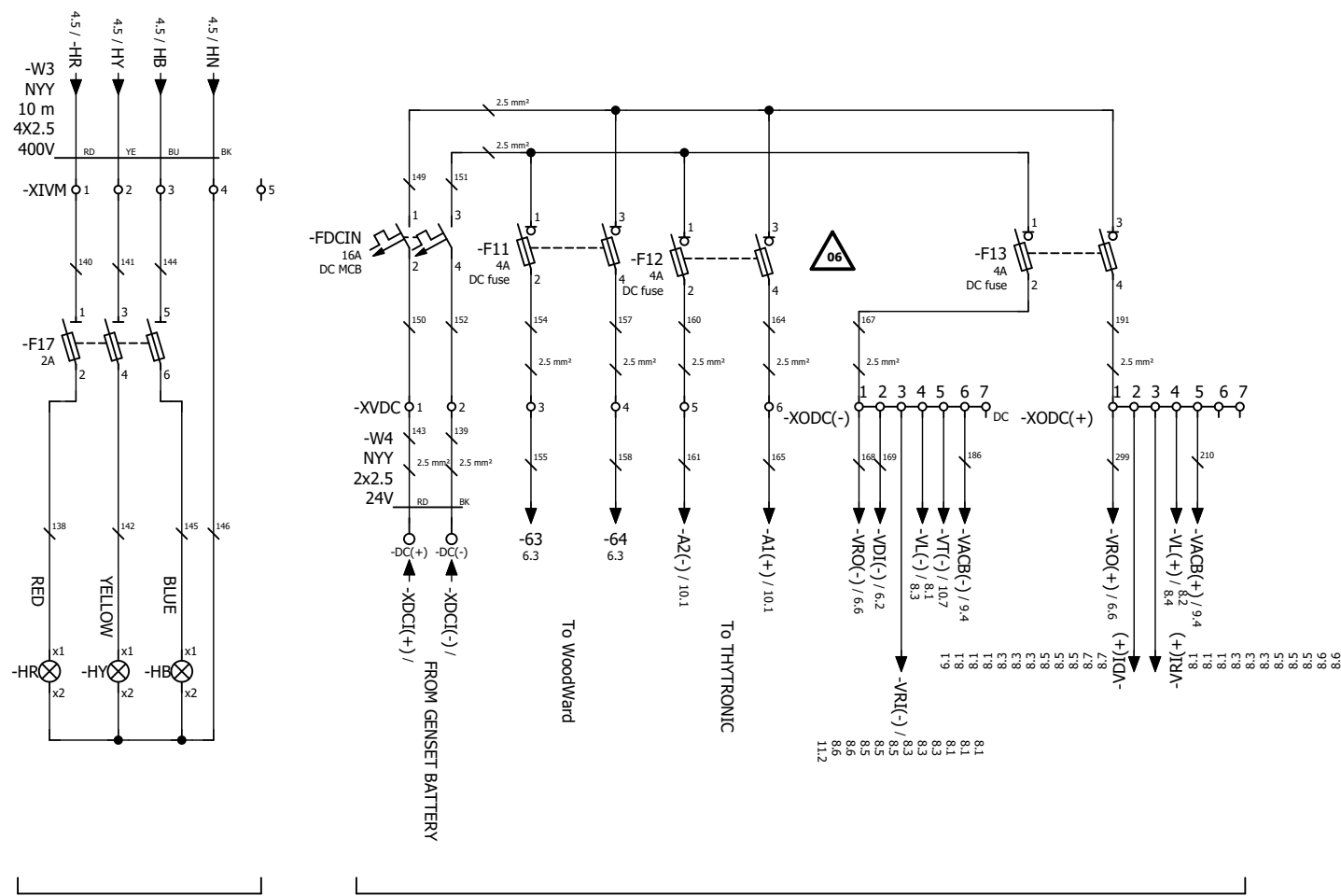
**DRAWING TITLE:**  
Off-Skid Panel Wiring Diagram(Synchronizing & Protection)

CONTRACT No.	SCALE	SIZE	CLASS	PHASE
52-98/4444	NON	A3	1	P

Document No.	Project	Area	Phase	MRQ No.	Dis.	Doc.	Sec.	Page No.	Rev. No.
OWNER DOC.No.	BU	20	VD	322	EL	SLD	0010	4	006



### AC Section "Power Distribution"

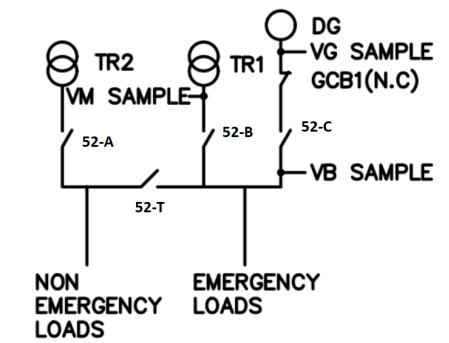


### GENERAL KEY

- Note1: Minimum wiring size for control= 1.5mm<sup>2</sup>.
- Note2: Minimum wiring size for AC power=2.5mm<sup>2</sup>.
- Note3: Terminal for CT connection shall be jumper link type.
- Note4: Minimum conductor size for CTs= 4 mm<sup>2</sup>.
- Note5: The control terminal blocks shall include not less than 15% spare terminals.
- Note6: All wires shall be terminated in clamp type terminals such that direct contact between screw, bolt or nut and conductor is avoided.

REFERENCE DRAWING	DWG. No.
Single Line Diagram	BU-20-VD-322-EL-SLD-0007
Gen-Set Package Signal List	BU-20-VD-322-EL-LST-0008

### GENERAL KEY



Rev.	Date	Purpose of Issue (P.O.I)	Prep.	Chkd.	Appr.	AC.
06	20/Nov/21	AFC	F.MRD	F.MRD	E.SHJ	-
05	06/Nov/21	FOR APPROVAL	F.MRD	F.MRD	E.SHJ	-
04	11/Oct/21	FOR APPROVAL	F.MRD	F.MRD	E.SHJ	-
03	25/Sep/21	FOR APPROVAL	F.MRD	F.MRD	E.SHJ	-
02	30/Agu/21	FOR APPROVAL	F.MRD	F.MRD	E.SHJ	-
01	27/JULY/21	FOR APPROVAL	F.MRD	A.OMD	E.SHJ	-
00	29/JUNE/21	FOR APPROVAL	A.OMD	A.OMD	E.SHJ	-

Owner:

MC:

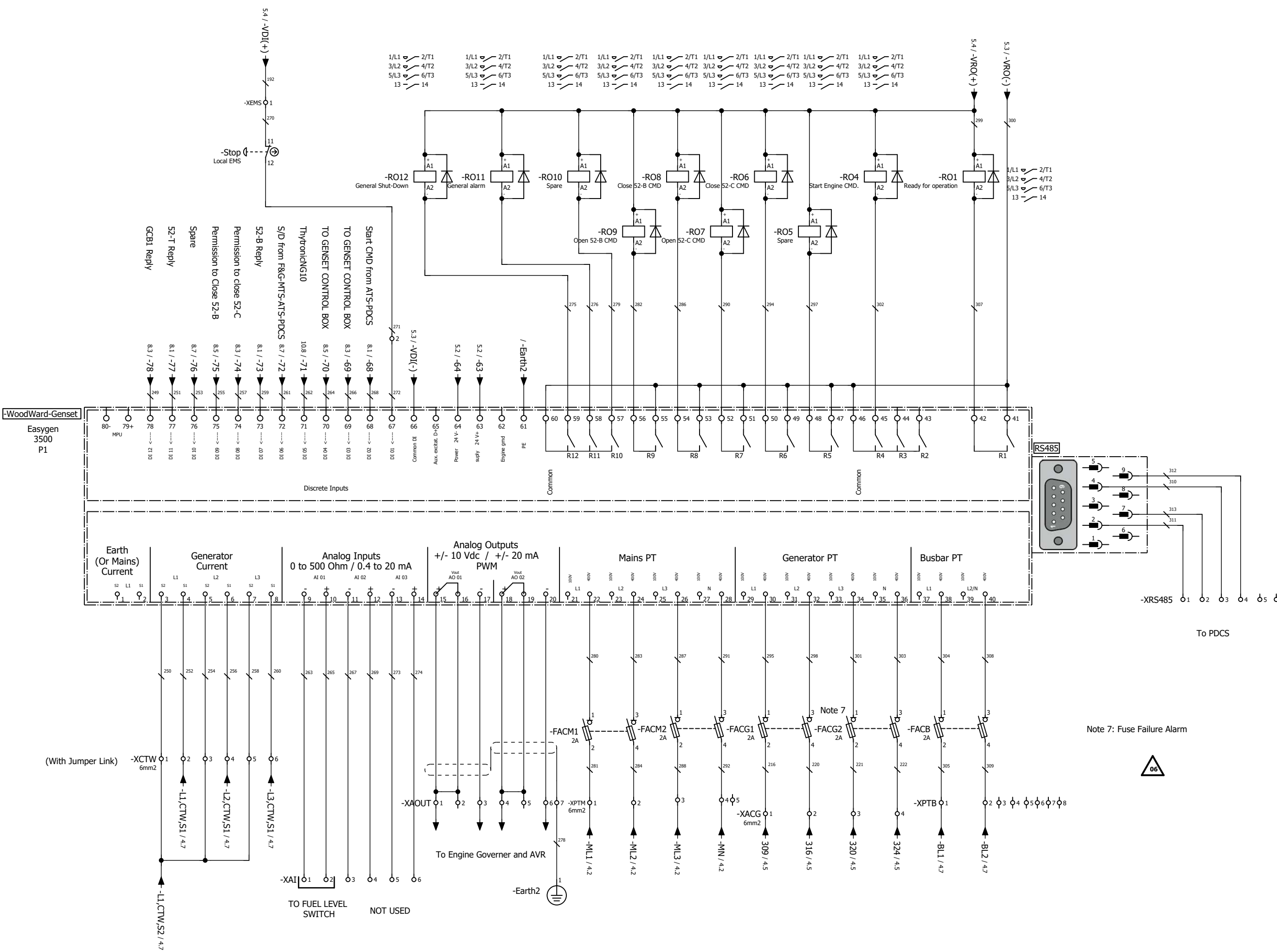
CONTRACTOR:

VENDOR:

PROJECT:  
BUSHEHR PETROCHEMICAL COMPANY OLEFIN PLANT

DRAWING TITLE:  
Off-Skid Panel Wiring Diagram(Synchronizing & Protection)

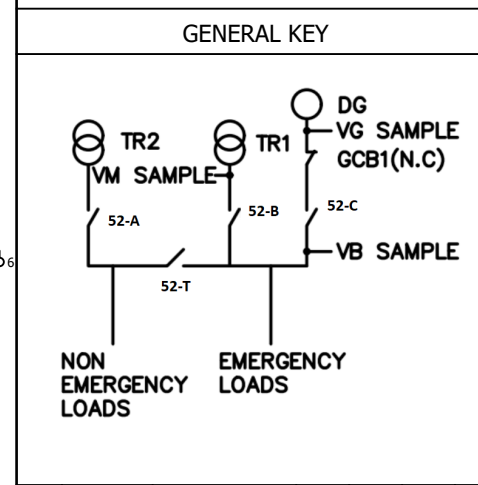
CONTRACT No.	SCALE	SIZE	CLASS	PHASE					
52-98/4444	NON	A3	1	P					
Document No.	Project	Area	Phase	MRQ No.	Dis.	Doc.	Sec.	Page No.	Rev. No.
OWNER DOC.No.	BU	20	VD	322	EL	SLD	0010	5	06



**GENERAL KEY**

Note1: Minimum wiring size for control= 1.5mm<sup>2</sup>.  
 Note2: Minimum wiring size for AC power=2.5mm<sup>2</sup>.  
 Note3: Terminal for CT connection shall be jumper link type.  
 Note4: Minimum conductor size for CTs= 4 mm<sup>2</sup>.  
 Note5: The control terminal blocks shall include not less than 15% spare terminals.  
 Note6: All wires shall be terminated in clamp type terminals such that direct contact between screw, bolt or nut and conductor is avoided.

REFERENCE DRAWING	DWG. No.
Single Line Diagram	BU-20-VD-322-EL-SLD-0007
Gen-Set Package Signal List	BU-20-VD-322-EL-LST-0008



Rev.	Date	Purpose of Issue (P.O.I)	Prep.	Chkd.	Appr.	AC.
06	20/Nov/21	AFC	F.MRD	F.MRD	E.SHJ	-
05	06/Nov/21	FOR APPROVAL	F.MRD	F.MRD	E.SHJ	-
04	11/Oct/21	FOR APPROVAL	F.MRD	F.MRD	E.SHJ	-
03	25/Sep/21	FOR APPROVAL	F.MRD	F.MRD	E.SHJ	-
02	30/Agu/21	FOR APPROVAL	F.MRD	F.MRD	E.SHJ	-
01	27/JULY/21	FOR APPROVAL	F.MRD	A.OMD	E.SHJ	-
00	29/JUNE/21	FOR APPROVAL	A.OMD	A.OMD	E.SHJ	-

Owner:

MC:

CONTRACTOR:

VENDOR:

**PROJECT:**  
 BUSHEHR PETROCHEMICAL COMPANY OLEFIN PLANT

**DRAWING TITLE:**  
 Off-Skid Panel Wiring Diagram(Synchronizing & Protection)

CONTRACT No.	SCALE	SIZE	CLASS	PHASE
52-98/4444	NON	A3	1	P

Document No.	Project	Area	Phase	MRQ No.	Dis.	Doc.	Sec.	Page No.	Rev. No.
OWNER DOC.No.	BU	20	VD	322	EL	SLD	0010	6	00

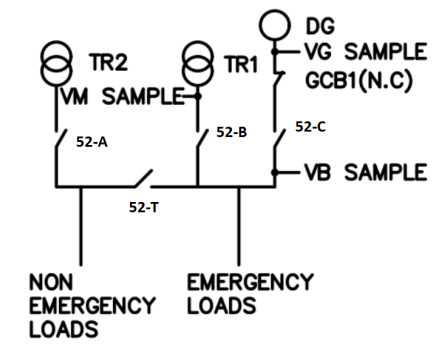
GENERAL KEY

Note1: Minimum wiring size for control= 1.5mm2.  
 Note2: Minimum wiring size for AC power=2.5mm2  
 Note3: Terminal for CT connection shall be Jumper link type.  
 Note4: Minimum conductor size for CTs= 4 mm2.  
 Note5: The control terminal blocks shall include not less than 15% spare terminals.  
 Note6: All wires shall be terminated in clamp type terminals such that direct contact between screw, bolt or nut and conductor is avoided.

REFERENCE DRAWING DWG. No.

Single Line Diagram	BU-20-VD-322-EL-SLD-0007
Gen-Set Package Signal List	BU-20-VD-322-EL-LST-0008

GENERAL KEY



06	20/Nov/21	AFC	F.MRD	F.MRD	E.SHJ	-
05	06/Nov/21	FOR APPROVAL	F.MRD	F.MRD	E.SHJ	-
04	11/Oct/21	FOR APPROVAL	F.MRD	F.MRD	E.SHJ	-
03	25/Sep/21	FOR APPROVAL	F.MRD	F.MRD	E.SHJ	-
02	30/Agu/21	FOR APPROVAL	F.MRD	F.MRD	E.SHJ	-
01	27/JULY/21	FOR APPROVAL	F.MRD	A.OMD	E.SHJ	-
00	29/JUNE/21	FOR APPROVAL	A.OMD	A.OMD	E.SHJ	-
Rev.	Date	Purpose of Issue (P.O.I)	Prep.	Chkd.	Appr.	AC.

Owner:

MC:

CONTRACTOR:

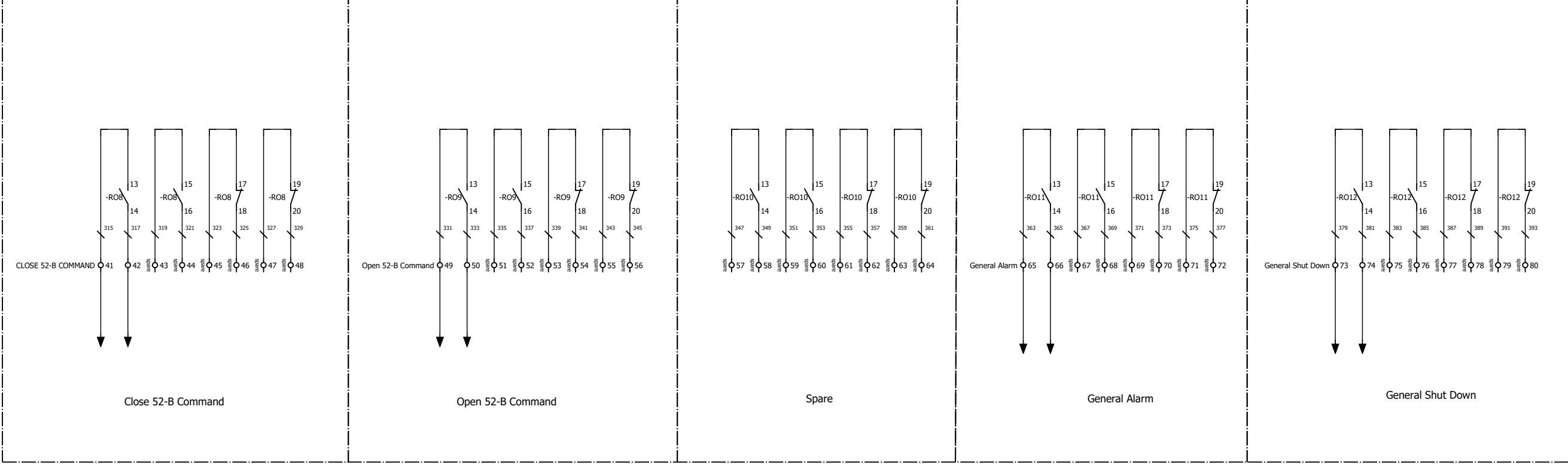
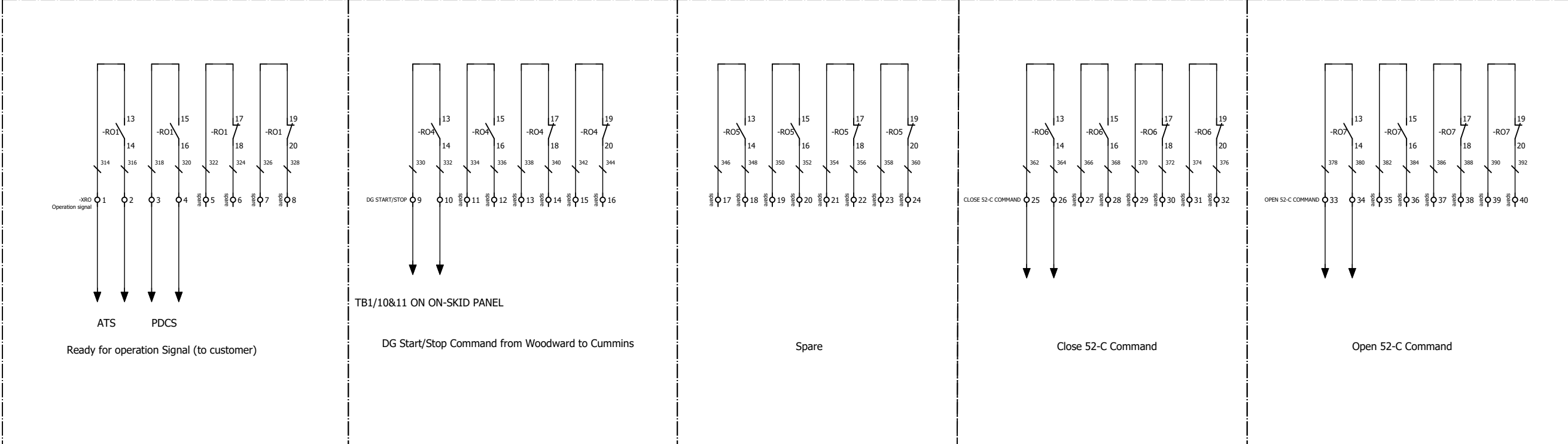
VENDOR:

PROJECT: BUSHEHR PETROCHEMICAL COMPANY OLEFIN PLANT

DRAWING TITLE: Off-Skid Panel Wiring Diagram(Synchronizing & Protection)

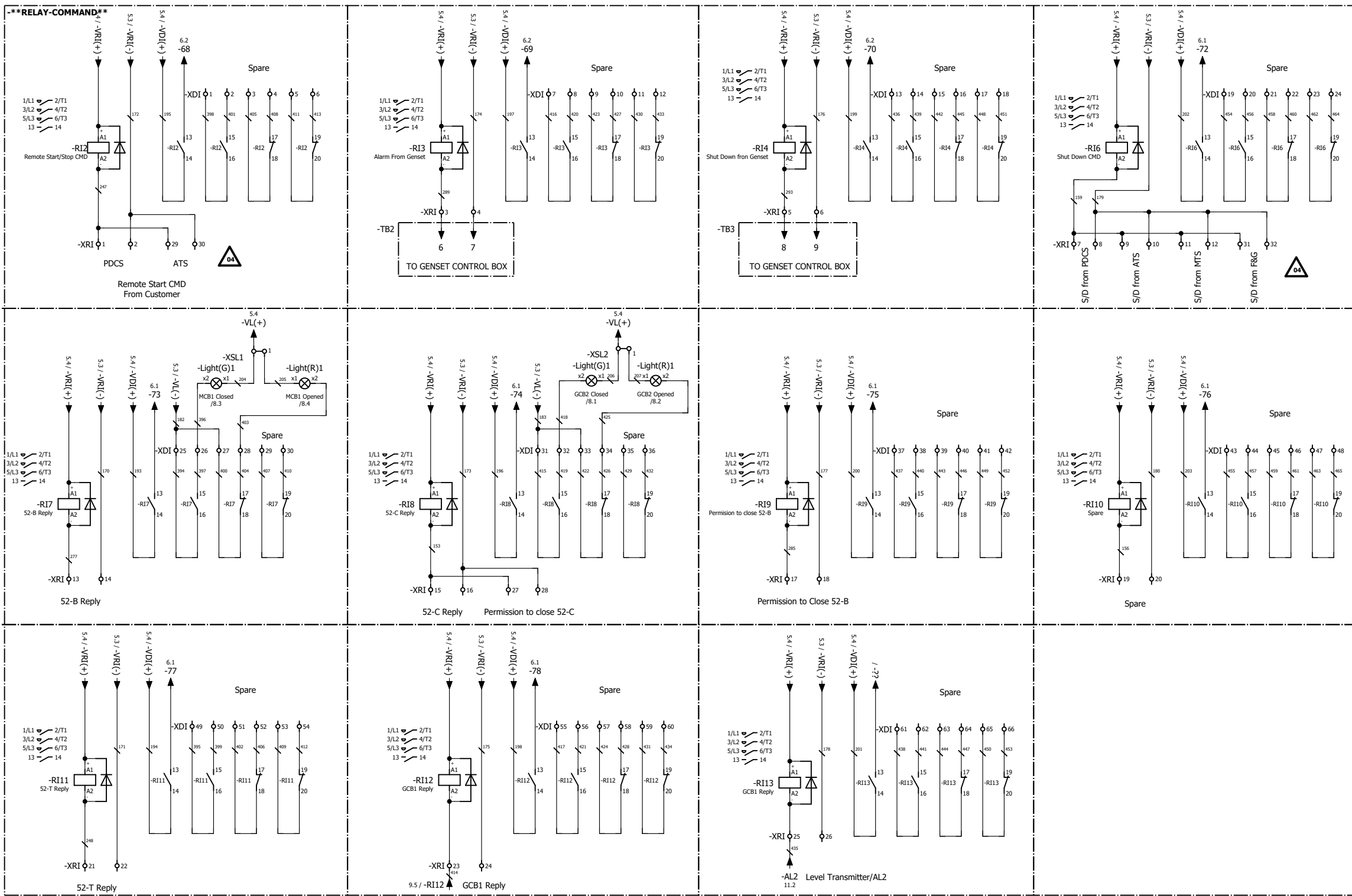
CONTRACT No.	SCALE	SIZE	CLASS	PHASE
52-98/4444	NON	A3	1	P

Document No.	Project	Area	Phase	MRQ No.	Dis.	Doc.	Sec.	Page No.	Rev. No.
OWNER DOC.No.	BU	20	VD	322	EL	SLD	0010	7	006



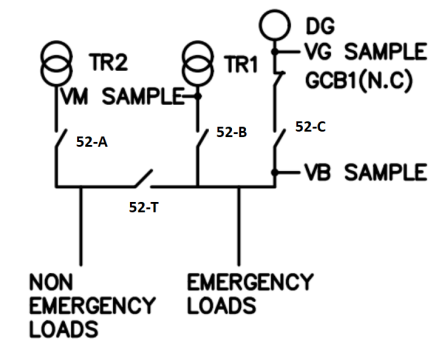
GENERAL KEY

Note1: Minimum wiring size for control= 1.5mm<sup>2</sup>.  
 Note2: Minimum wiring size for AC power=2.5mm<sup>2</sup>.  
 Note3: Terminal for CT connection shall be Jumper link type.  
 Note4: Minimum conductor size for CTs= 4 mm<sup>2</sup>.  
 Note5: The control terminal blocks shall include not less than 15% spare terminals.  
 Note6: All wires shall be terminated in clamp type terminals such that direct contact between screw, bolt or nut and conductor is avoided.



REFERENCE DRAWING	DWG. No.
Single Line Diagram	BU-20-VD-322-EL-SLD-0007
Gen-Set Package Signal List	BU-20-VD-322-EL-LST-0008

GENERAL KEY



06	20/Nov/21	AFC	F.MRD	F.MRD	E.SHJ	-
05	06/Nov/21	FOR APPROVAL	F.MRD	F.MRD	E.SHJ	-
04	11/Oct/21	FOR APPROVAL	F.MRD	F.MRD	E.SHJ	-
03	25/Sep/21	FOR APPROVAL	F.MRD	F.MRD	E.SHJ	-
02	30/Agu/21	FOR APPROVAL	F.MRD	F.MRD	E.SHJ	-
01	27/JULY/21	FOR APPROVAL	F.MRD	A.OMD	E.SHJ	-
00	29/JUNE/21	FOR APPROVAL	A.OMD	A.OMD	E.SHJ	-
Rev.	Date	Purpose of Issue (P.O.I)	Prep.	Chkd.	Appr.	AC.

Owner:

MC:

CONTRACTOR:

VENDOR:

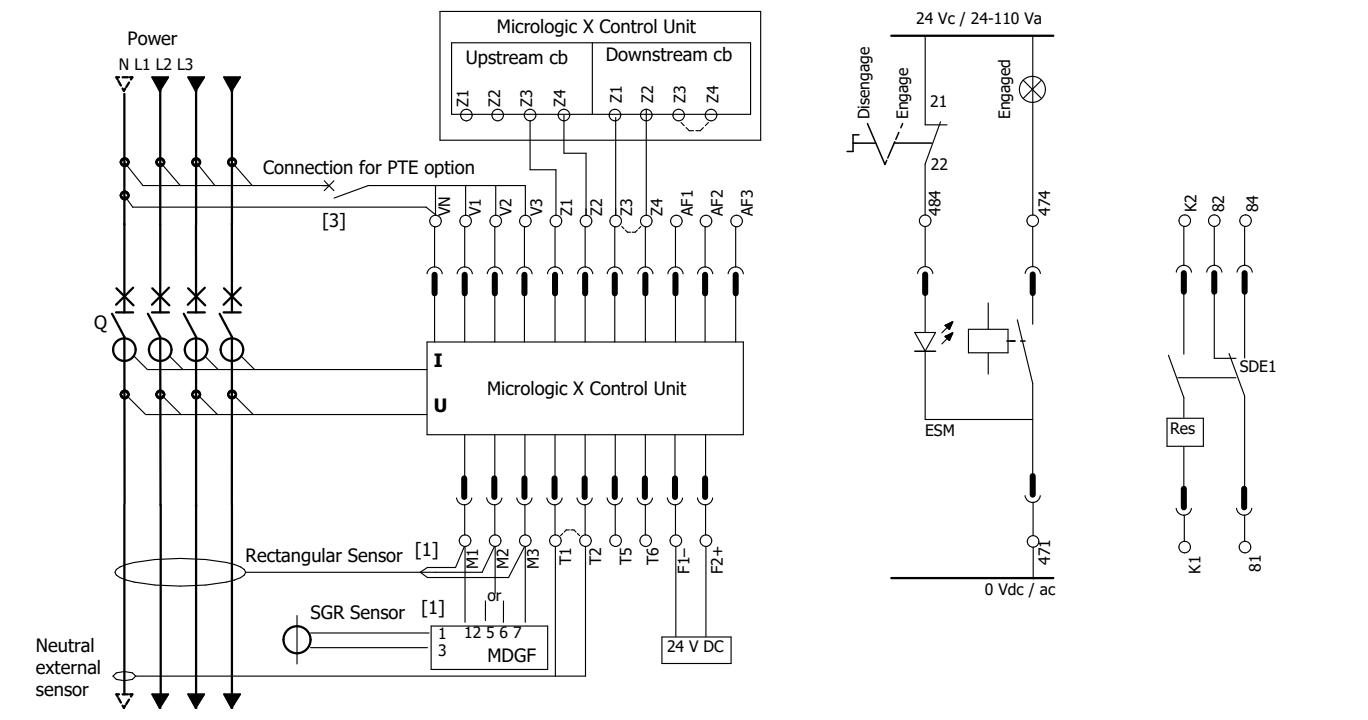
PROJECT:  
 BUSHEHR PETROCHEMICAL COMPANY OLEFIN PLANT  
 DRAWING TITLE:  
 Off-Skid Panel Wiring Diagram(Synchronizing & Protection)

CONTRACT No.	SCALE	SIZE	CLASS	PHASE					
52-98/4444	NON	A3	1	P					
Document No.	Project	Area	Phase	MRQ No.	Dis.	Doc.	Sec.	Page No.	Rev. No.
OWNER DOC.No.	BU	20	VD	322	EL	SLD	0010	8	002

# ACB 2500A, 4P, Fixed, NC, 65KA

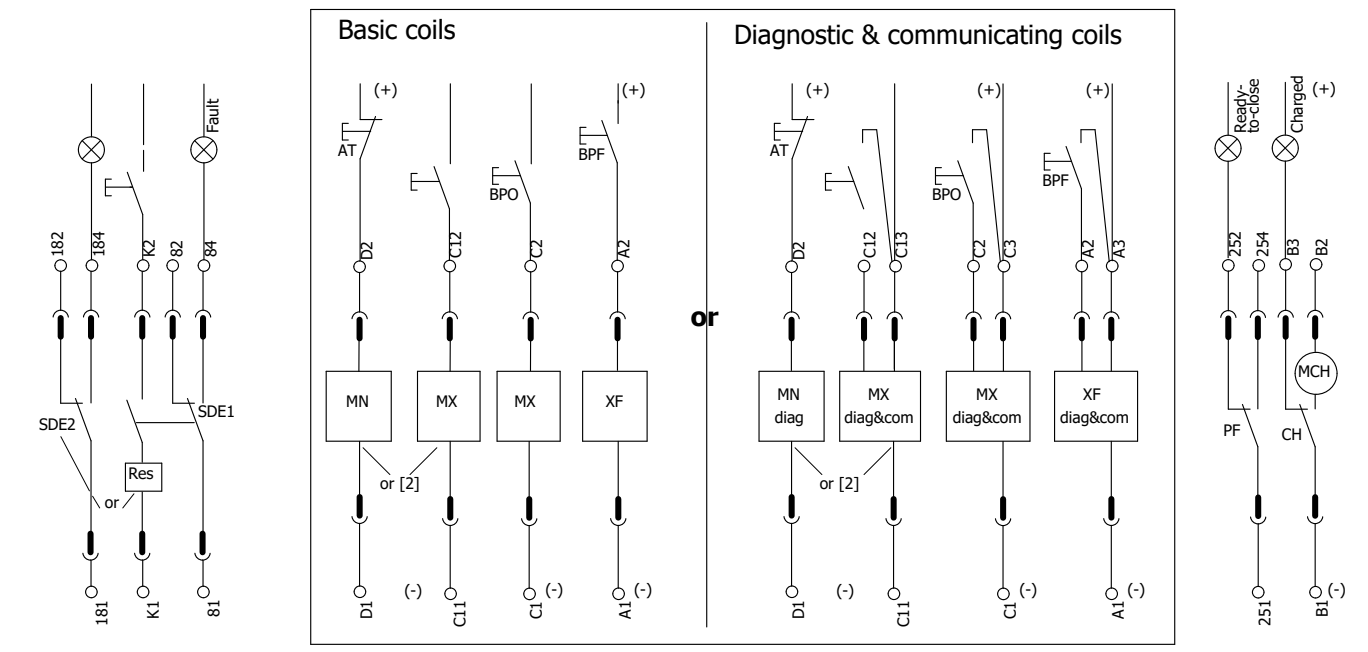
-ACB

## Power Control unit Remote operation



— Available for circuit breaker and switch-disconnector.  
 — Available for circuit breaker only.

## Remote operation

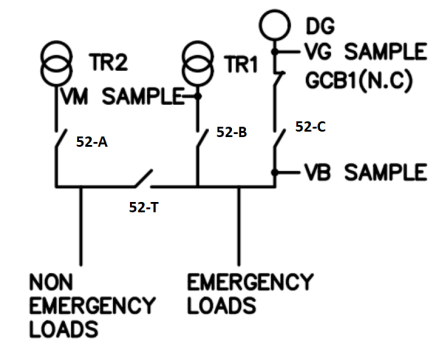


## GENERAL KEY

Note1: Minimum wiring size for control= 1.5mm<sup>2</sup>.  
 Note2: Minimum wiring size for AC power=2.5mm<sup>2</sup>.  
 Note3: Terminal for CT connection shall be jumper link type.  
 Note4: Minimum conductor size for CTs= 4 mm<sup>2</sup>.  
 Note5: The control terminal blocks shall include not less than 15% spare terminals.  
 Note6: All wires shall be terminated in clamp type terminals such that direct contact between screw, bolt or nut and conductor is avoided.

REFERENCE DRAWING	DWG. No.
Single Line Diagram	BU-20-VD-322-EL-SLD-0007
Gen-Set Package Signal List	BU-20-VD-322-EL-LST-0008

## GENERAL KEY



Rev.	Date	Purpose of Issue (P.O.I)	Prep.	Chkd.	Appr.	AC.
06	20/Nov/21	AFC	F.MRD	F.MRD	E.SHJ	-
05	06/Nov/21	FOR APPROVAL	F.MRD	F.MRD	E.SHJ	-
04	11/Oct/21	FOR APPROVAL	F.MRD	F.MRD	E.SHJ	-
03	25/Sep/21	FOR APPROVAL	F.MRD	F.MRD	E.SHJ	-
02	30/Agu/21	FOR APPROVAL	F.MRD	F.MRD	E.SHJ	-
01	27/JULY/21	FOR APPROVAL	F.MRD	A.OMD	E.SHJ	-
00	29/JUNE/21	FOR APPROVAL	A.OMD	A.OMD	E.SHJ	-

Owner:

MC:

CONTRACTOR:

VENDOR:

PROJECT: BUSHEHR PETROCHEMICAL COMPANY OLEFIN PLANT

DRAWING TITLE: Off-Skid Panel Wiring Diagram(Synchronizing & Protection)

CONTRACT No.	SCALE	SIZE	CLASS	PHASE
52-98/4444	NON	A3	1	P

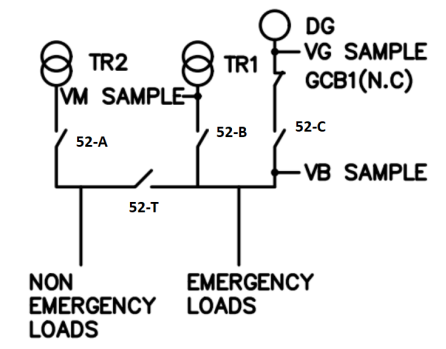
Document No.	Project	Area	Phase	MRQ No.	Dis.	Doc.	Sec.	Page No.	Rev. No.
OWNER DOC.No.	BU	20	VD	322	EL	SLD	0010	9	00

GENERAL KEY

Note1: Minimum wiring size for control= 1.5mm2.  
 Note2: Minimum wiring size for AC power=2.5mm2  
 Note3: Terminal for CT connection shall be Jumper link type.  
 Note4: Minimum conductor size for CTs= 4 mm2.  
 Note5: The control terminal blocks shall include not less than 15% spare terminals.  
 Note6: All wires shall be terminated in clamp type terminals such that direct contact between screw, bolt or nut and conductor is avoided.

REFERENCE DRAWING	DWG. No.
Single Line Diagram	BU-20-VD-322-EL-SLD-0007
Gen-Set Package Signal List	BU-20-VD-322-EL-LST-0008

GENERAL KEY



Rev.	Date	Purpose of Issue (P.O.I)	Prep.	Chkd.	Appr.	AC.
06	20/Nov/21	AFC	F.MRD	F.MRD	E.SHJ	-
05	06/Nov/21	FOR APPROVAL	F.MRD	F.MRD	E.SHJ	-
04	11/Oct/21	FOR APPROVAL	F.MRD	F.MRD	E.SHJ	-
03	25/Sep/21	FOR APPROVAL	F.MRD	F.MRD	E.SHJ	-
02	30/Agu/21	FOR APPROVAL	F.MRD	F.MRD	E.SHJ	-
01	27/JULY/21	FOR APPROVAL	F.MRD	A.OMD	E.SHJ	-
00	29/JUNE/21	FOR APPROVAL	A.OMD	A.OMD	E.SHJ	-

Owner:

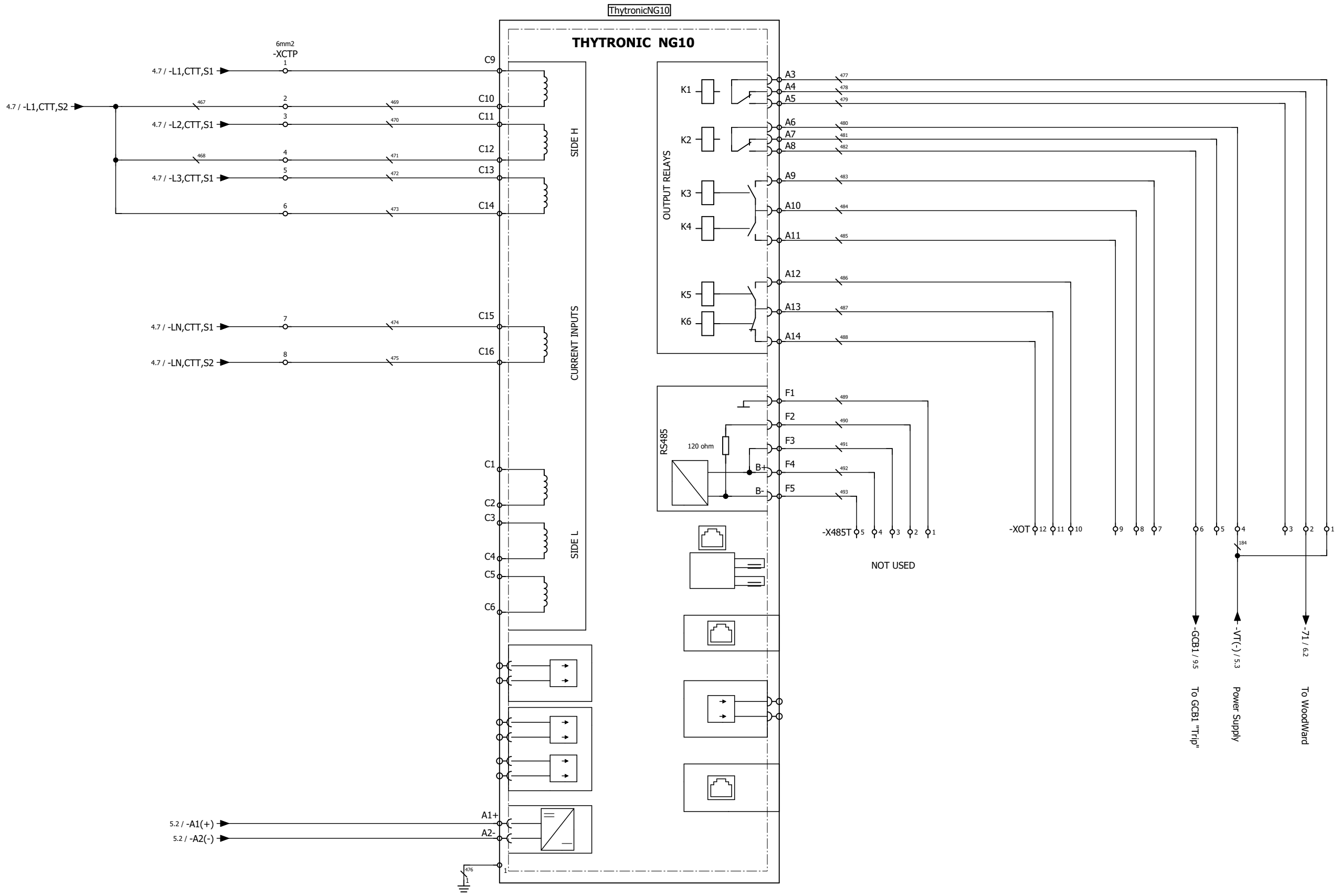
MC:

CONTRACTOR:

VENDOR:

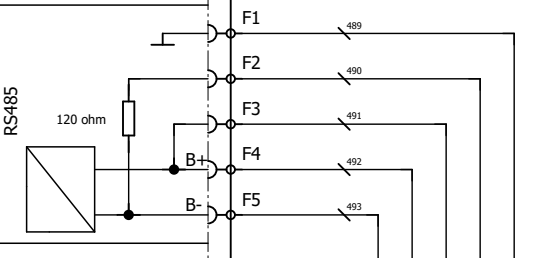
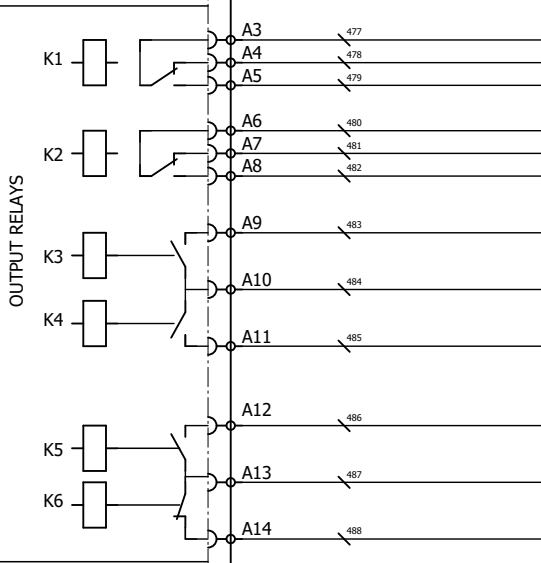
PROJECT: BUSHEHR PETROCHEMICAL COMPANY OLEFIN PLANT  
 DRAWING TITLE: Off-Skid Panel Wiring Diagram(Synchronizing & Protection)

CONTRACT No.	SCALE	SIZE	CLASS	PHASE					
52-98/4444	NON	A3	1	P					
Document No.	Project	Area	Phase	MRQ No.	Dis.	Doc.	Sec.	Page No.	Rev. No.
OWNER DOC.No.	BU	20	VD	322	EL	SLD	0010	10	006



ThytronicNG10

THYTRONIC NG10



NOT USED

-XOT φ12 φ11 φ10 φ9 φ8 φ7 φ6 φ5 φ4 φ3 φ2 φ1

184

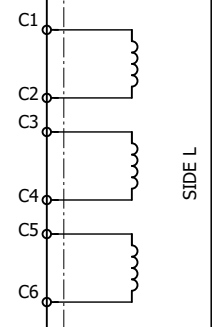
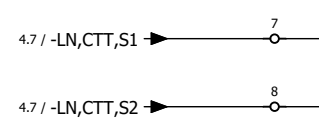
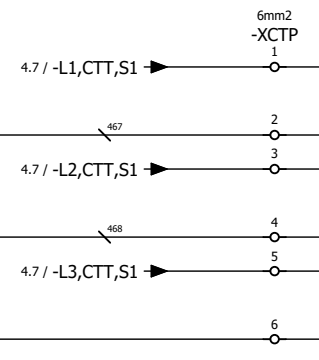
184

184

To GCB1 "Trip"

Power Supply

To WoodWard



GENERAL KEY

Note1: Minimum wiring size for control= 1.5mm<sup>2</sup>.  
 Note2: Minimum wiring size for AC power=2.5mm<sup>2</sup>.  
 Note3: Terminal for CT connection shall be Jumper link type.  
 Note4: Minimum conductor size for CTs= 4 mm<sup>2</sup>.  
 Note5: The control terminal blocks shall include not less than 15% spare terminals.  
 Note6: All wires shall be terminated in clamp type terminals such that direct contact between screw, bolt or nut and conductor is avoided.

REFERENCE DRAWING	DWG. No.
Single Line Diagram	BU-20-VD-322-EL-SLD-0007
Gen-Set Package Signal List	BU-20-VD-322-EL-LST-0008

Floating Type Magnetic Level Transmitter

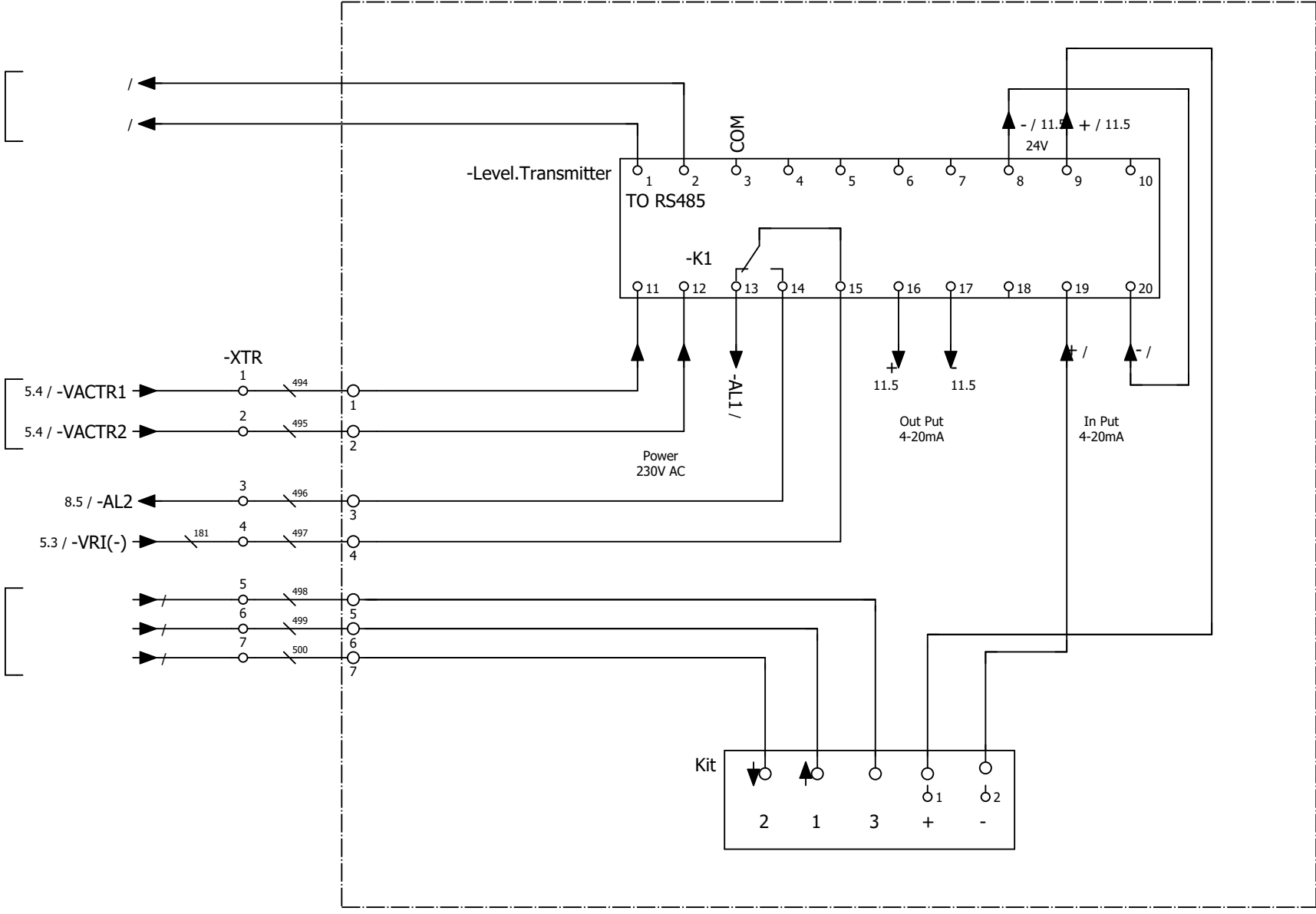
To PDCS  
322-HW-OSP-PDS-SG-005

Power supply 230 v

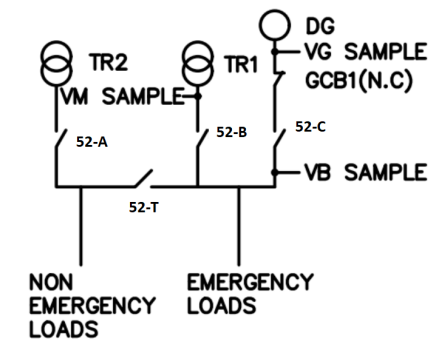
Level Transmitter/AL2

Power Supply

From fuel level Sensore



GENERAL KEY



06	20/Nov/21	AFC	F.MRD	F.MRD	E.SHJ	-
05	06/Nov/21	FOR APPROVAL	F.MRD	F.MRD	E.SHJ	-
04	11/Oct/21	FOR APPROVAL	F.MRD	F.MRD	E.SHJ	-
03	25/Sep/21	FOR APPROVAL	F.MRD	F.MRD	E.SHJ	-
02	30/Agu/21	FOR APPROVAL	F.MRD	F.MRD	E.SHJ	-
01	27/JULY/21	FOR APPROVAL	F.MRD	A.OMD	E.SHJ	-
00	29/JUNE/21	FOR APPROVAL	A.OMD	A.OMD	E.SHJ	-
Rev.	Date	Purpose of Issue (P.O.I)	Prep.	Chkd.	Appr.	AC.

Owner:

MC:

CONTRACTOR:

VENDOR:

PROJECT:  
BUSHEHR PETROCHEMICAL COMPANY OLEFIN PLANT

DRAWING TITLE:  
Off-Skid Panel Wiring Diagram(Synchronizing & Protection)

CONTRACT No.	SCALE	SIZE	CLASS	PHASE					
52-98/4444	NON	A3	1	P					
Document .No.	Project	Area	Phase	MRQ No.	Dis.	Doc.	Sec.	Page No.	Rev. No.
OWNER DOC.No.	BU	20	VD	322	EL	SLD	0010	11	06

# Summarized parts list

F02\_001

Order number	Quantity	Description Designation	Type number Part number	Manufacturer Supplier	Unit price	Total price	Pos.
01	1 Piece	Selector switch 4-position		For voltage meter		0.00	
02	298	General terminal			0.00	0.00	
03	5 Piece	Measuring instrument		Analog Zigler	0.00	0.00	
04	9	CURRENT TRANSFORMER. 2500/1A		Mag Haris	0.00	0.00	
05	1	CT neutral or ground fault protection		Mag Haris	0.00	0.00	
06	3	Miniature circuit breaker DC, 2P, 4A		Hyundai	0.00	0.00	
07	1	Miniature circuit breaker - 3P - 2A		Hyundai	0.00	0.00	
08	1	Miniature circuit breaker - 2P- 32A		Hyundai	0.00	0.00	
09	1	Miniature circuit breaker - 2P- 10A		Hyundai	0.00	0.00	
10	2	Miniature circuit breaker - 2P- 4A		Hyundai	0.00	0.00	
11	5	Miniature circuit breaker - 2P- 2A		Hyundai	0.00	0.00	
12	1	Miniature circuit breaker DC, 2P, 16A		Hyundai	0.00	0.00	
13	1	Motor-Fan.		AVL	0.00	0.00	
14	1 pc(s).	LED system light		Mahnoor	0.00	0.00	
15	1	Switch-disconnector Fixed - 4 poles - 2500A		Schneider	0.00	0.00	
16	3	INDICATOR LIGHT, BLUE		Schneider	0.00	0.00	
17	3	INDICATOR LIGHT, RED		Schneider	0.00	0.00	
18	1	INDICATOR LIGHT, WHITE		Schneider	0.00	0.00	
19	21	CONTACTOR,AC3:3KW 1NO DC24V		Omron Finder	0.00	0.00	

06	20/Nov/21	AFC	F.MRD	F.MRD	E.SHJ	-
05	06/Nov/21	ISSUED FOR APPROVAL	F.MRD	F.MRD	E.SHJ	-
04	11/Oct/21	ISSUED FOR APPROVAL	F.MRD	F.MRD	E.SHJ	-
03	25/Sep/21	ISSUED FOR APPROVAL	F.MRD	F.MRD	E.SHJ	-
02	30/Agul/21	ISSUED FOR APPROVAL	F.MRD	F.MRD	E.SHJ	-
01	27/July/21	ISSUED FOR APPROVAL	F.MRD	A.OMD	E.SHJ	-
00	29/JUN/21	ISSUED FOR APPROVAL	F.MRD	A.OMD	E.SHJ	-
Rev.	Date	Purpose of Issue (P.O.I)	Prep.	Chkd.	Appr.	AC.

Owner: 

MC. 

CONTRACTOR: 

VENDOR: 

PROJECT:  
BUSHEHR PETROCHEMICAL  
COMPANY  
OLEFIN PLANT

DRAWING TITLE:  
OFF-SKID PANEL WIRING DIAGRAM  
(SYNCHRONIZING AND PROTECTION)

CONTRACT No.	SCALE			SIZE		CLASS			PHASE	
52-98/4444	NON			A3		1			P	
OWNER DOC. No.	Project	Area	Phase	MRQ No.	Dis.	Doc.	Sec.	Rev. No.	Page	
	BU	20	VD	322	EL	DIG	0010	06	1	
									Page /	

# Summarized parts list

F02\_001

Order number	Quantity	Description Designation	Type number Part number	Manufacturer Supplier	Unit price	Total price	Pos.
20	1 Piece	Limit Switch - NC contact type		RTS	0.00	0.00	
21	1 Piece	Temperature Switch - NC contact type		Koomesh	0.00	0.00	
22	1 Piece	Heater		Koomesh	0.00	0.00	
23	1 Piece	Synchron Control Board		WoodWard Easy Gen 3500 P1	0.00	0.00	
24	1 Piece	AUX Protection		Thytronic NG10	0.00	0.00	
25	1 Piece	Fuel Level Switch		Eyvaz Technic CP33	0.00	0.00	
26	1	Miniature circuit breaker 3P, 50A		Hyundai	0.00	0.00	
27	4	Miniature circuit-breaker, 1P, 2A		Hyundai	0.00	0.00	
28	3	PT, 400/400		Mag Haris	0.00	0.00	
29	1	3 safety fuses in fused disconnect, 6A, 400V		Hyundai	0.00	0.00	
30	1	RCBO 2P, 63A					

06	20/Nov/21	AFC	F.MRD	F.MRD	E.SHJ	-
05	06/Nov/21	ISSUED FOR APPROVAL	F.MRD	F.MRD	E.SHJ	-
04	11/Oct/21	ISSUED FOR APPROVAL	F.MRD	F.MRD	E.SHJ	-
03	25/Sep/21	ISSUED FOR APPROVAL	F.MRD	F.MRD	E.SHJ	-
02	30/Agu/21	ISSUED FOR APPROVAL	F.MRD	F.MRD	E.SHJ	-
01	27/July/21	ISSUED FOR APPROVAL	F.MRD	A.OMD	E.SHJ	-
00	29/JUN/21	ISSUED FOR APPROVAL	F.MRD	A.OMD	E.SHJ	-
Rev.	Date	Purpose of Issue (P.O.I)	Prep.	Chkd.	Appr.	AC.

Owner: 

MC: 

CONTRACTOR: 

VENDOR: 

PROJECT: BUSHEHR PETROCHEMICAL COMPANY OLEFIN PLANT

DRAWING TITLE: OFF-SKID PANEL WIRING DIAGRAM (SYNCHRONIZING AND PROTECTION)

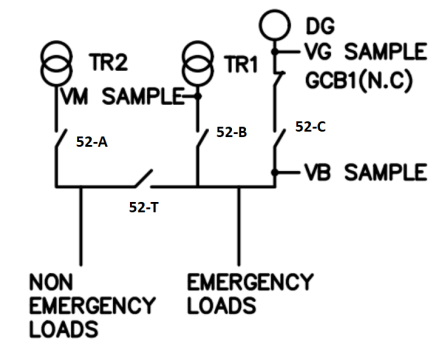
CONTRACT No.	SCALE		SIZE		CLASS			PHASE	
52-98/4444	NON		A3		1			P	
OWNER DOC. No.	Project	Area	Phase	MRQ No.	Dis.	Doc.	Sec.	Rev. No.	Page
	BU	20	VD	322	EL	DIG	0010	06	1.a 7

GENERAL KEY

Note1: Minimum wiring size for control= 1.5mm<sup>2</sup>.  
 Note2: Minimum wiring size for AC power=2.5mm<sup>2</sup>.  
 Note3: Terminal for CT connection shall be jumper link type.  
 Note4: Minimum conductor size for CTs= 4 mm<sup>2</sup>.  
 Note5: The control terminal blocks shall include not less than 15% spare terminals.  
 Note6: All wires shall be terminated in clamp type terminals such that direct contact between screw, bolt or nut and conductor is avoided.

REFERENCE DRAWING	DWG. No.
Single Line Diagram	BU-20-VD-322-EL-SLD-0007
Gen-Set Package Signal List	BU-20-VD-322-EL-LST-0008

GENERAL KEY



Rev.	Date	Purpose of Issue (P.O.I)	Prep.	Chkd.	Appr.	AC.
06	20/Nov/21	AFC	F.MRD	F.MRD	E.SHJ	-
05	06/Nov/21	FOR APPROVAL	F.MRD	F.MRD	E.SHJ	-
04	11/Oct/21	FOR APPROVAL	F.MRD	F.MRD	E.SHJ	-
03	25/Sep/21	FOR APPROVAL	F.MRD	F.MRD	E.SHJ	-
02	30/Agu/21	FOR APPROVAL	F.MRD	F.MRD	E.SHJ	-
01	27/JULY/21	FOR APPROVAL	F.MRD	A.OMD	E.SHJ	-
00	29/JUNE/21	FOR APPROVAL	A.OMD	A.OMD	E.SHJ	-

Owner:

MC:

CONTRACTOR:

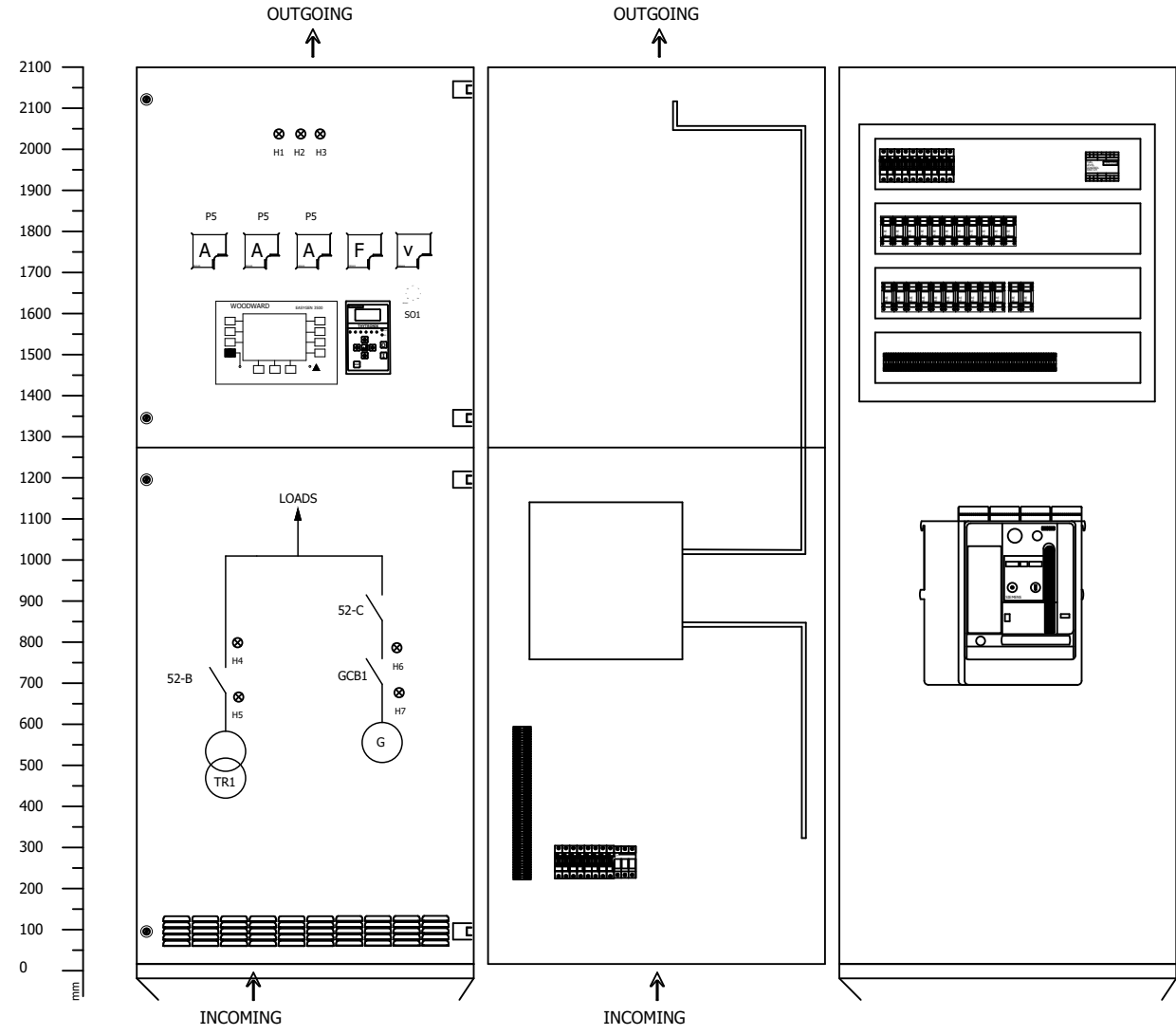
VENDOR:

PROJECT:  
 BUSHEHR PETROCHEMICAL COMPANY OLEFIN PLANT

DRAWING TITLE:  
 Off-Skid Panel Wiring Diagram(Synchronizing & Protection)

CONTRACT No.	SCALE	SIZE	CLASS	PHASE
52-98/4444	NON	A3	1	P

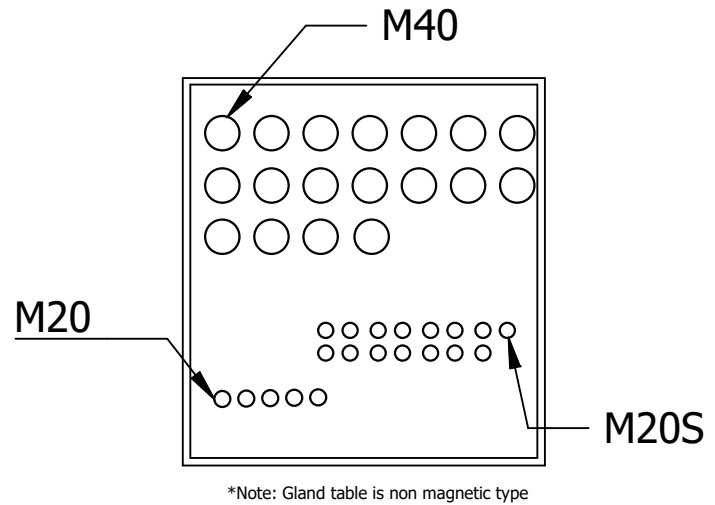
Document .No.	Project	Area	Phase	MRQ No.	Dis.	Doc.	Sec.	Page No.	Rev. No.
OWNER DOC.No.	BU	20	VD	322	EL	SLD	0010	12	00



Height : 2100  
 Width : 1000  
**FRONT VIEW**

Height : 2100  
 Width : 1000  
**SIDE VIEW**

Height : 2100  
 Width : 1000  
 Depth : 1000  
**INSIDE**



Lenght : 2100  
 Width : 1000  
**BELOW**

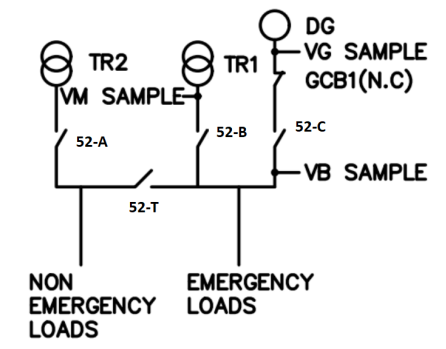
Blank Page

GENERAL KEY

Note1: Minimum wiring size for control= 1.5mm<sup>2</sup>.  
 Note2: Minimum wiring size for AC power=2.5mm<sup>2</sup>.  
 Note3: Terminal for CT connection shall be jumper link type.  
 Note4: Minimum conductor size for CTs= 4 mm<sup>2</sup>.  
 Note5: The control terminal blocks shall include not less than 15% spare terminals.  
 Note6: All wires shall be terminated in clamp type terminals such that direct contact between screw, bolt or nut and conductor is avoided.

REFERENCE DRAWING	DWG. No.
Single Line Diagram	BU-20-VD-322-EL-SLD-0007
Gen-Set Package Signal List	BU-20-VD-322-EL-LST-0008

GENERAL KEY



06	20/Nov/21	AFC	F.MRD	F.MRD	E.SHJ	-
05	06/Nov/21	FOR APPROVAL	F.MRD	F.MRD	E.SHJ	-
04	11/Oct/21	FOR APPROVAL	F.MRD	F.MRD	E.SHJ	-
03	25/Sep/21	FOR APPROVAL	F.MRD	F.MRD	E.SHJ	-
02	30/Agu/21	FOR APPROVAL	F.MRD	F.MRD	E.SHJ	-
01	27/JULY/21	FOR APPROVAL	F.MRD	A.OMD	E.SHJ	-
00	29/JUNE/21	FOR APPROVAL	A.OMD	A.OMD	E.SHJ	-
Rev.	Date	Purpose of Issue (P.O.I)	Prep.	Chkd.	Appr.	AC.

Owner:  MC.  CONTRACTOR: 

VENDOR: 

PROJECT: BUSHEHR PETROCHEMICAL COMPANY OLEFIN PLANT

DRAWING TITLE: Off-Skid Panel Wiring Diagram(Synchronizing & Protection)

CONTRACT No.	SCALE	SIZE	CLASS	PHASE
52-98/4444	NON	A3	1	P

Document .No.	Project	Area	Phase	MRQ No.	Dis.	Doc.	Sec.	Page No.	Rev. No.
OWNER DOC.No.	BU	20	VD	322	EL	SLD	0010	13	06

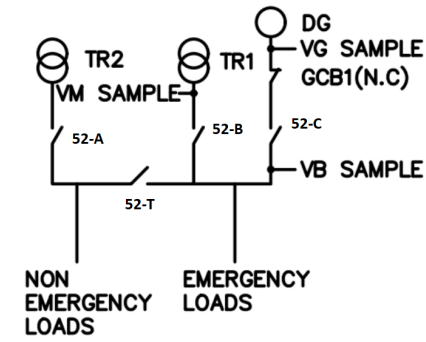
**Blank Page**

**GENERAL KEY**

Note1: Minimum wiring size for control= 1.5mm<sup>2</sup>.  
 Note2: Minimum wiring size for AC power=2.5mm<sup>2</sup>.  
 Note3: Terminal for CT connection shall be jumper link type.  
 Note4: Minimum conductor size for CTs= 4 mm<sup>2</sup>.  
 Note5: The control terminal blocks shall include not less than 15% spare terminals.  
 Note6: All wires shall be terminated in clamp type terminals such that direct contact between screw, bolt or nut and conductor is avoided.

REFERENCE DRAWING	DWG. No.
Single Line Diagram	BU-20-VD-322-EL-SLD-0007
Gen-Set Package Signal List	BU-20-VD-322-EL-LST-0008

**GENERAL KEY**



06	20/Nov/21	AFC	F.MRD	F.MRD	E.SHJ	-
05	06/Nov/21	FOR APPROVAL	F.MRD	F.MRD	E.SHJ	-
04	11/Oct/21	FOR APPROVAL	F.MRD	F.MRD	E.SHJ	-
03	25/Sep/21	FOR APPROVAL	F.MRD	F.MRD	E.SHJ	-
02	30/Agu/21	FOR APPROVAL	F.MRD	F.MRD	E.SHJ	-
01	27/JULY/21	FOR APPROVAL	F.MRD	A.OMD	E.SHJ	-
00	29/JUNE/21	FOR APPROVAL	A.OMD	A.OMD	E.SHJ	-
Rev.	Date	Purpose of Issue (P.O.I)	Prep.	Chkd.	Appr.	AC.

<b>Owner:</b> 	<b>MC:</b> 	<b>CONTRACTOR:</b> 
<b>VENDOR:</b> 		

**PROJECT:**  
BUSHEHR PETROCHEMICAL COMPANY OLEFIN PLANT

**DRAWING TITLE:**  
Off-Skid Panel Wiring Diagram(Synchronizing & Protection)

CONTRACT No.	SCALE	SIZE	CLASS	PHASE
52-98/4444	NON	A3	1	P

Document .No.	Project	Area	Phase	MRQ No.	Dis.	Doc.	Sec.	Page No.	Rev. No.
OWNER DOC.No.	BU	20	VD	322	EL	SLD	0010	14	06

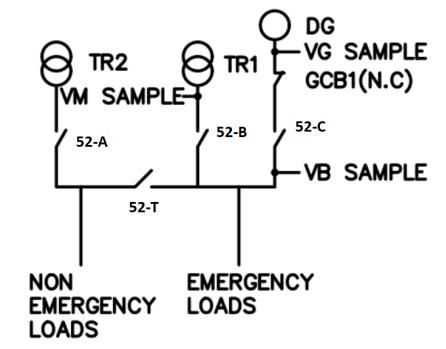
Blank Page

GENERAL KEY

Note1: Minimum wiring size for control= 1.5mm<sup>2</sup>.  
 Note2: Minimum wiring size for AC power=2.5mm<sup>2</sup>.  
 Note3: Terminal for CT connection shall be jumper link type.  
 Note4: Minimum conductor size for CTs= 4 mm<sup>2</sup>.  
 Note5: The control terminal blocks shall include not less than 15% spare terminals.  
 Note6: All wires shall be terminated in clamp type terminals such that direct contact between screw, bolt or nut and conductor is avoided.

REFERENCE DRAWING	DWG. No.
Single Line Diagram	BU-20-VD-322-EL-SLD-0007
Gen-Set Package Signal List	BU-20-VD-322-EL-LST-0008

GENERAL KEY



Rev.	Date	Purpose of Issue (P.O.I)	Prep.	Chkd.	Appr.	AC.
06	20/Nov/21	AFC	F.MRD	F.MRD	E.SHJ	-
05	06/Nov/21	FOR APPROVAL	F.MRD	F.MRD	E.SHJ	-
04	11/Oct/21	FOR APPROVAL	F.MRD	F.MRD	E.SHJ	-
03	25/Sep/21	FOR APPROVAL	F.MRD	F.MRD	E.SHJ	-
02	30/Agu/21	FOR APPROVAL	F.MRD	F.MRD	E.SHJ	-
01	27/JULY/21	FOR APPROVAL	F.MRD	A.OMD	E.SHJ	-
00	29/JUNE/21	FOR APPROVAL	A.OMD	A.OMD	E.SHJ	-

Owner:  MC.  CONTRACTOR:   
 VENDOR: 

PROJECT: BUSHEHR PETROCHEMICAL COMPANY OLEFIN PLANT  
 DRAWING TITLE: Off-Skid Panel Wiring Diagram(Synchronizing & Protection)

CONTRACT No.	SCALE	SIZE	CLASS	PHASE
52-98/4444	NON	A3	1	P

Document .No.	Project	Area	Phase	MRQ No.	Dis.	Doc.	Sec.	Page No.	Rev. No.
OWNER DOC.No.	BU	20	VD	322	EL	SLD	0010	15	006