



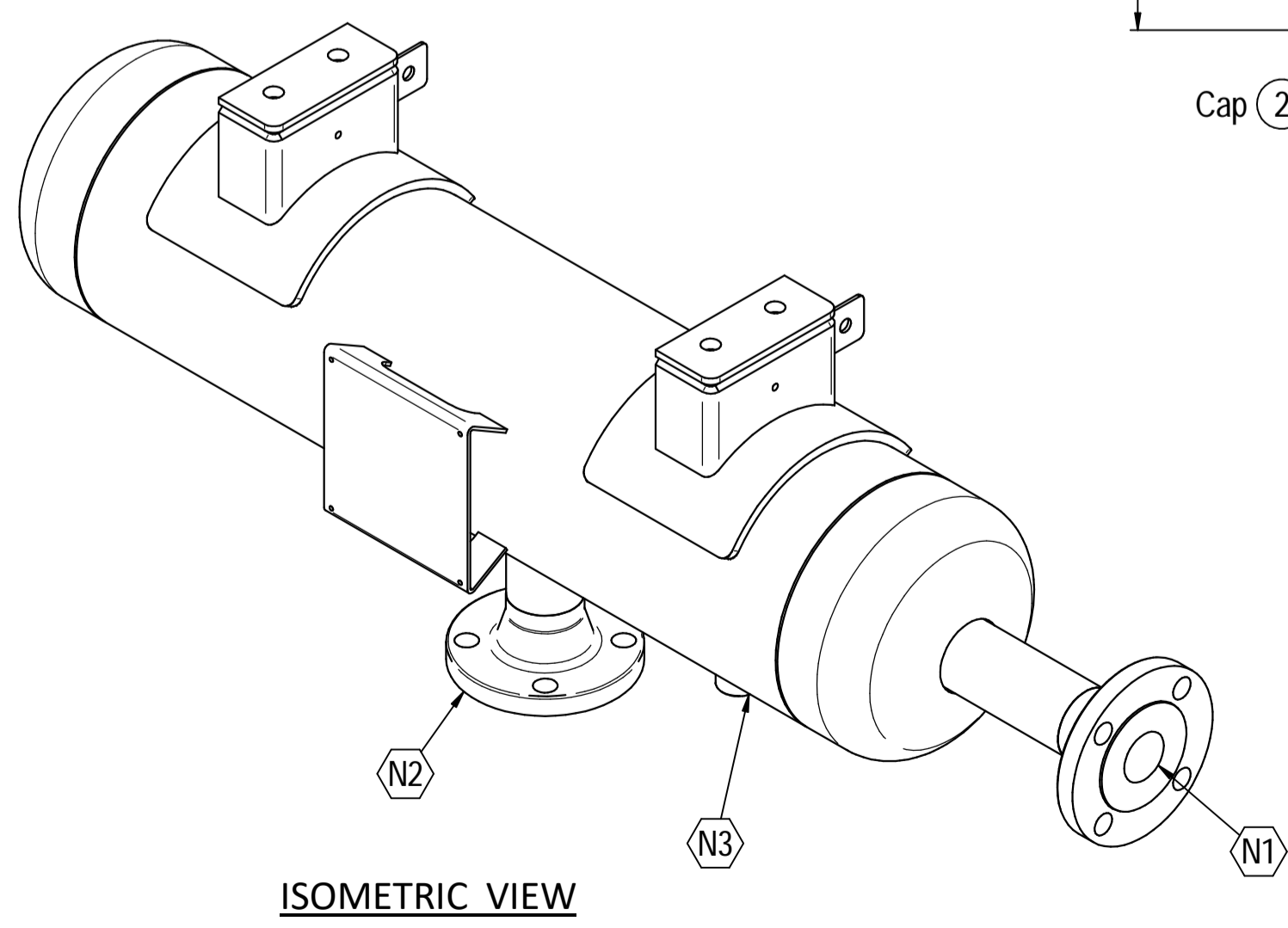
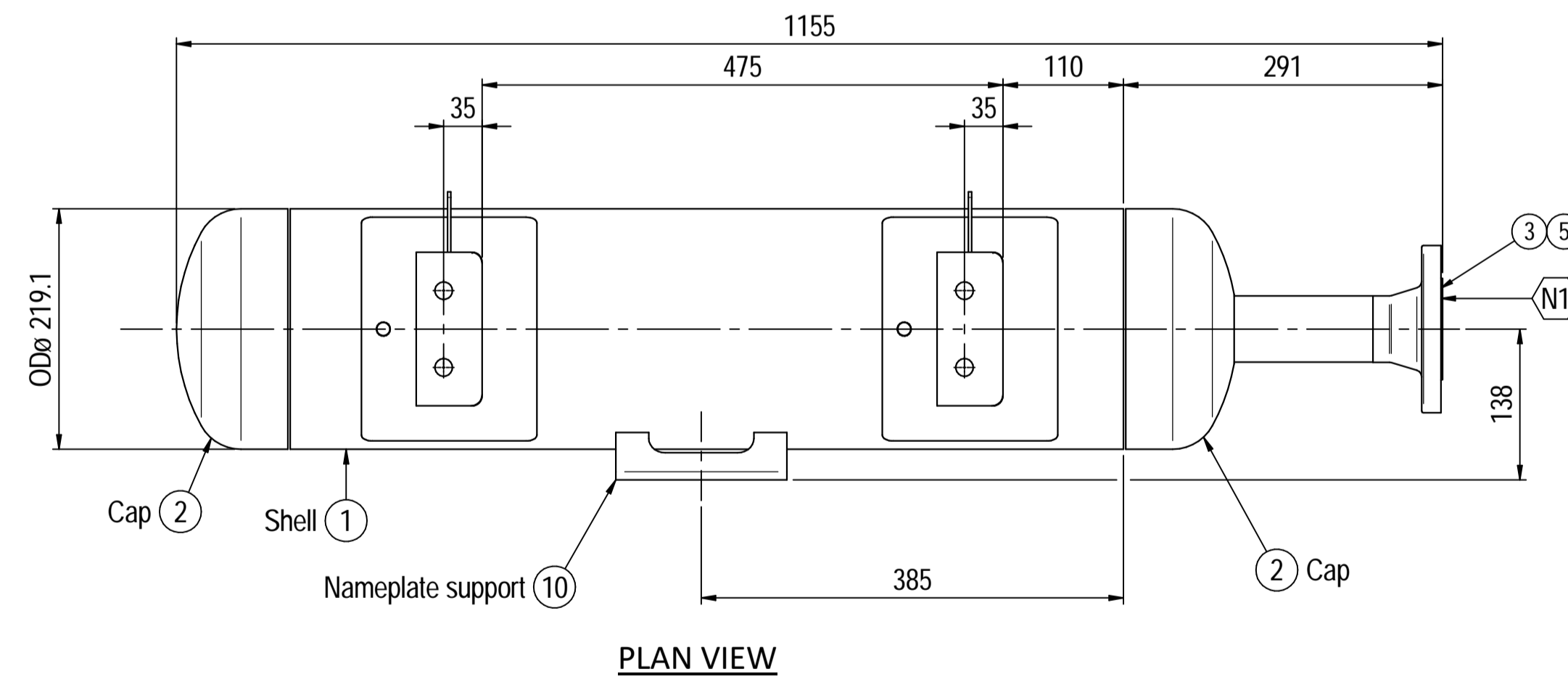
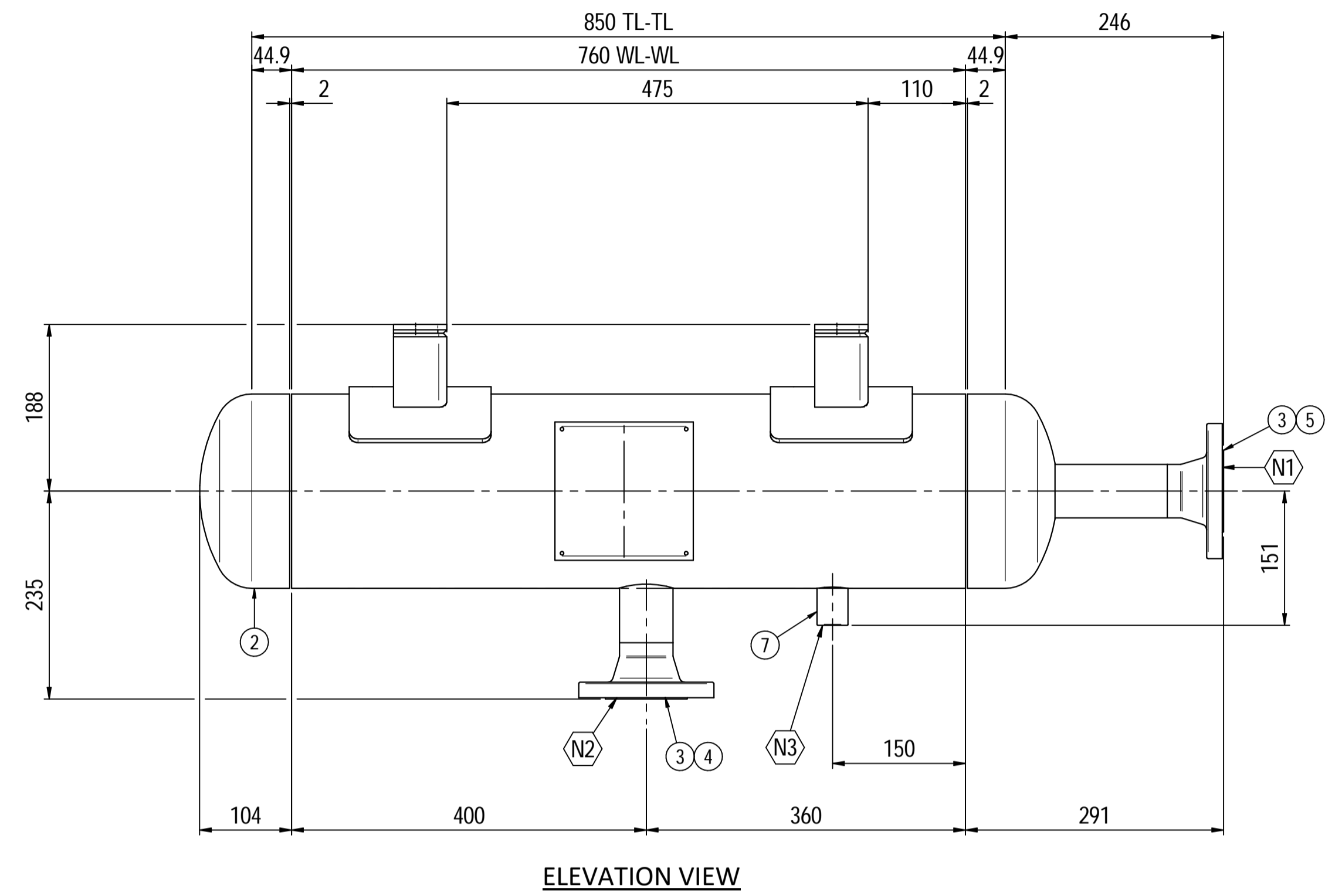
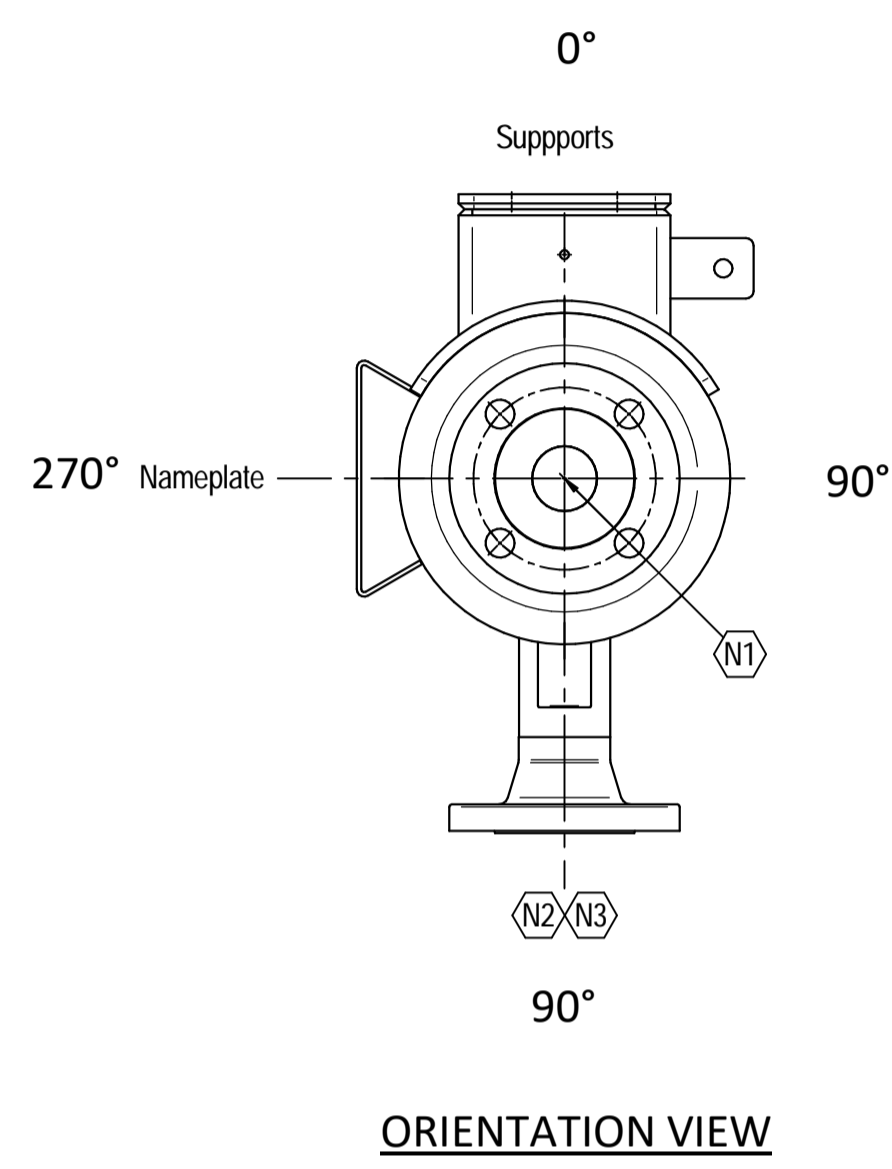
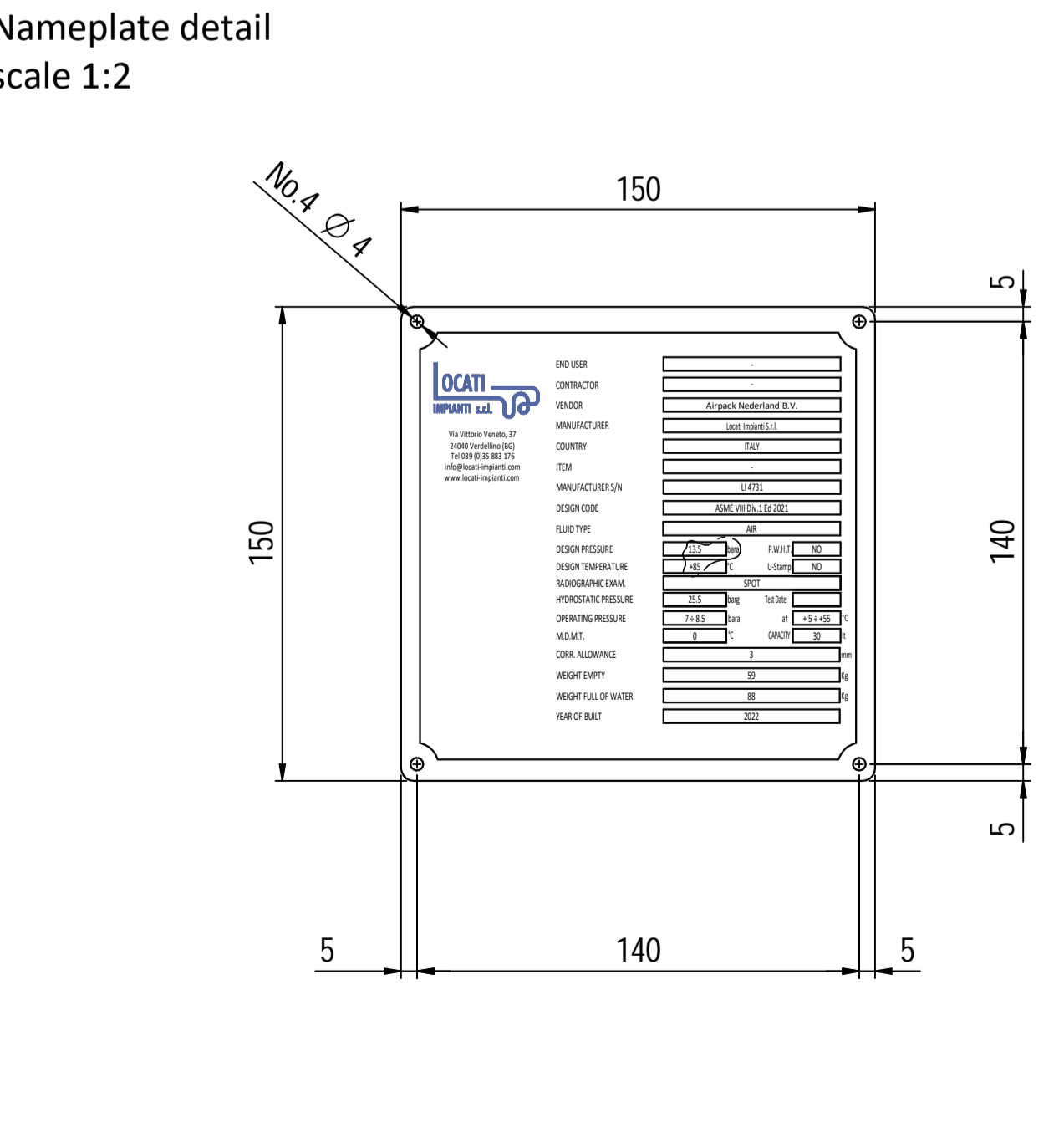
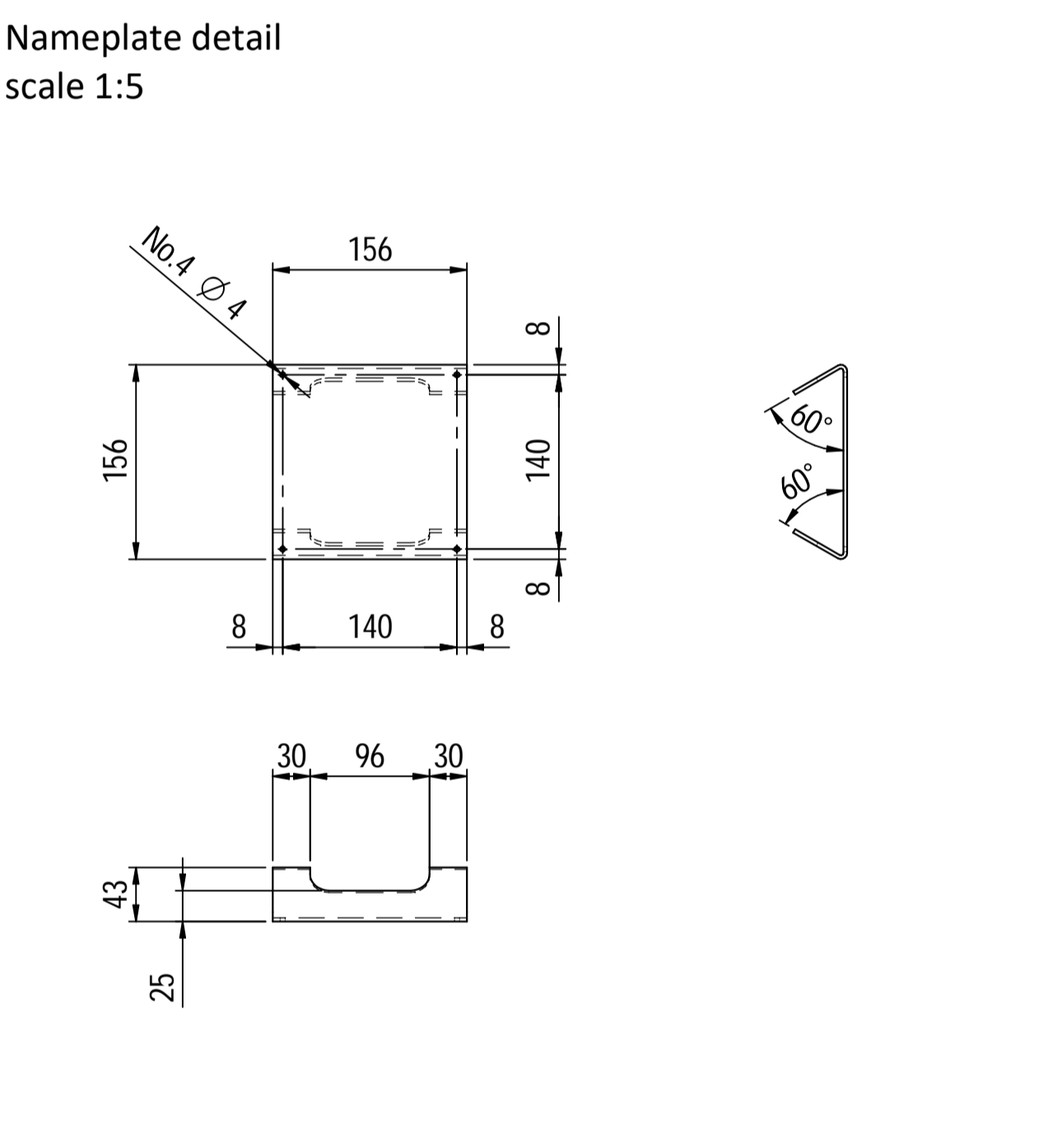
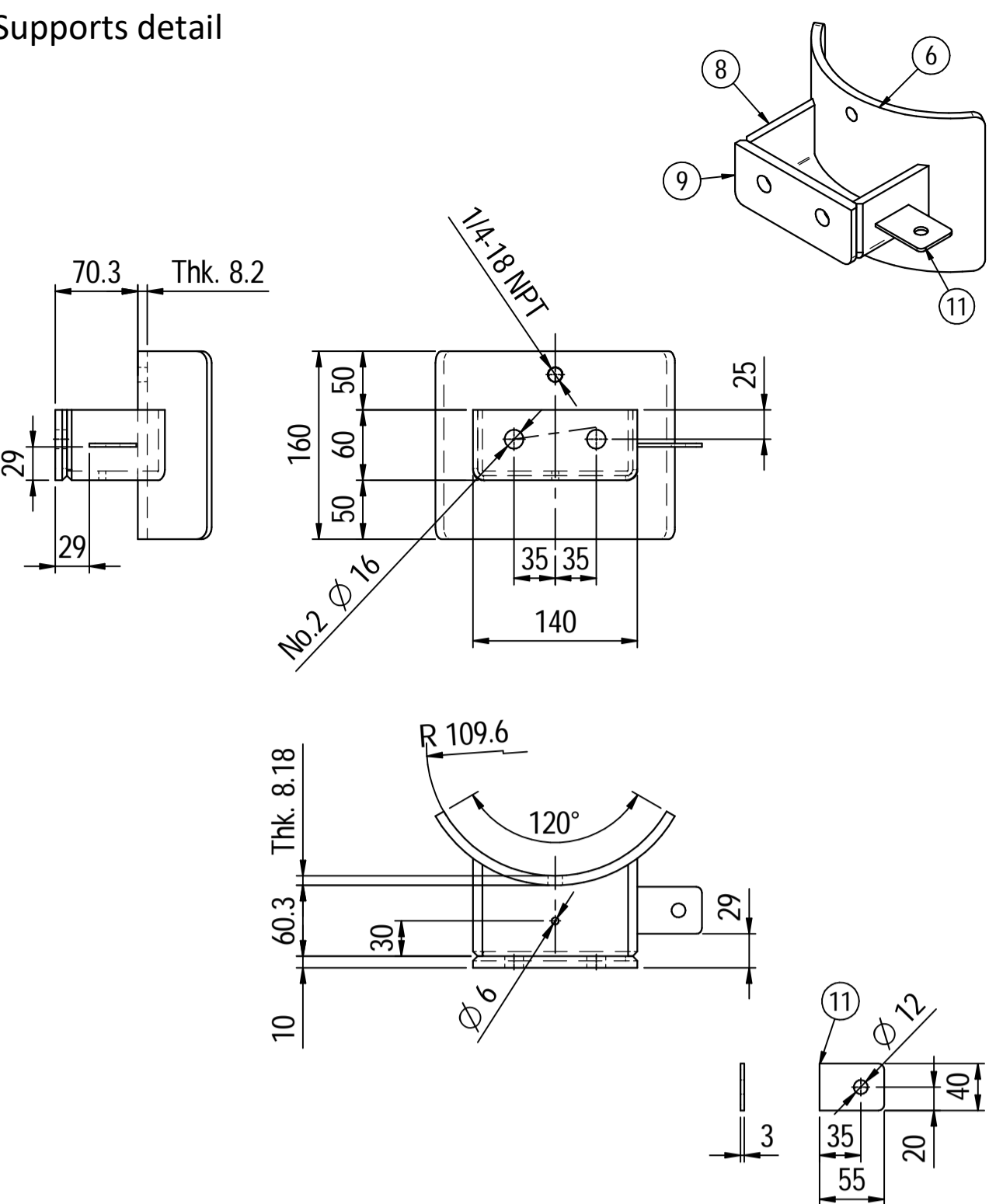


| | | | | | | | | | |
|--|--|------|-------|------|------|------|--|-------------------------|--------|
| OWNER:  شرکت سست و سویی توهمه ایران (سهامی عامه) | BUSHEHR PETROCHEMICAL COMPANY MEG PLANT | | | | | | EPC CONTRACTOR:  Chagalesh-Enerchimi-Steam Joint Venture BUPC-MEG PLANT PROJECT | | |
| | PULSATION DAMPER DETAIL DRAWING FOR EMERGENCY INSTRUMENT AIR COMPRESSOR | | | | | |  Netherlands | | |
| MC :  شرکت سست و سویی توهمه ایران (سهامی عامه) | Project | Area | Phase | Unit | Dis. | Doc. | Seq. | Contract No : 52-98/445 | |
| Owner Document Number: 17811-23D | BU | 20 | VD | 303 | ME | DWG | 0080 | Rev.: | Page |
| | | | | | | | | 01 | 1 of 4 |

PULSATION DAMPER DETAIL DRAWING FOR EMERGENCY INSTRUMENT AIR COMPRESSOR

| | | | | | | |
|-------------|-------------|-------------------------|-----------------|----------------|-----------------|-----------------|
| | | | | | | |
| | | | | | | |
| | | | | | | |
| 01 | 26/04/2022 | For approval | KP | CL | JR | |
| 00 | 06/04/2022 | For approval | KP | CL | JR | |
| Rev. | Date | Purpose of Issue | Prepared | Checked | Approved | AC Code |
| | | | | | Class: 1 | Phase: P |



| Material List | | | | | |
|---------------|------|--|-------------|-------|--|
| Pos. | Q.ty | Description | Mat. | Cert. | |
| 1 | 1 | Shell by seamless pipe 8" Sch.40 L=760 | A106 Gr.B | 3.1 | |
| 2 | 2 | Cap 8" Sch40 | A234 WPB | 3.1 | |
| 3 | 2 | Flange 2" WN 150# Sch160 | SA105 | 3.1 | |
| 4 | 1 | Seamless pipe 2" Sch160 L=74 | A106 Gr.B | 3.1 | |
| 5 | 1 | Seamless pipe 2" Sch160 L=72 | A106 Gr.B | 3.1 | |
| 6 | 2 | Pad by pipe 8" Sch.40 | A106 Gr.B | 3.1 | |
| 7 | 1 | Coupling 1/2" NPT #6000 | A105 | 3.1 | |
| 8 | 2 | Plate 83x231 Thk.8 | A516 70 | 3.1 | |
| 9 | 2 | Plate 60x140 Thk.10 | A516 70 | 3.1 | |
| 10 | 1 | Nameplate support 156x241 Thk.3mm | A516 70 | 3.1 | |
| 11 | 2 | Earthing Plate 55 x 40 Thk.3 | A240 TP316L | 3.1 | |

Note:
 1) Governing measurement S.I. unless otherwise specified;
 2) Flange bolt holes have to be straddled from main vessel center line in plan & vertical & horizontal centreline in elevation;
 3) Material: certification 3.1 EN 10204;
 4) All internal edge shall be rounded off;
 5) Nozzle fittings in accordance with ASME B16.5: 2013;
 6) Flange fittings in accordance with ASME B16.9: 2012;
 7) The flange dimensions are in accordance to ASME B16.5: 2013;
 8) All fillet welds not detailed on "WELDING MAP" or drawing shall have the weld; throated equal to 0,7 times the minimum thickness to be welded;
 9) All welds are continuous except where indicate;
 10) See document C220006CLC007 for vessel calculation.

| ITEM | QTY | SERVICE | SIZE | O.D. | THK | RATING | TYPE | FACE | O.D. | THK. | Tc |
|------|-----|------------|------|------|------|--------|------|-------|------|------|----------|
| N3 | 1 | DRAIN | 1/2" | 38.1 | 8.38 | #6000 | - | NPT-F | - | - | 8.5 ± 10 |
| N2 | 1 | AIR OUTLET | 2" | 60.3 | 8.74 | #150 | WN | RF | - | - | 8.5 ± 10 |
| N1 | 1 | AIR INLET | 2" | 60.3 | 8.74 | #150 | WN | RF | - | - | 8.5 ± 10 |

| DATI DI PROGETTO / Design data | | | |
|--------------------------------|--------------------------|-----------------------------|------------------------|
| FLUIDO | Air | COLLAUDO | Test |
| STATO FISICO DEL FLUIDO | Gas | NATIONAL BOARD REGISTRATION | NO |
| STATO FISICO DEL FLUIDO | Gas | NATIONAL BOARD REGISTRATION | NO |
| CODICE DI CALCOLO | ASME VIII Div. 1 Ed.2021 | CANADIAN REGISTER NUMBER | NO |
| PRESSIONE DI ESERCIZIO | 7 + 8.5 bara | SERVIZIO LETALE | NO |
| PRESSIONE DI PROGETTO | 13.5 bara (14 barg) | R-T EXAMINATION | Spot (RT3) |
| PRESSIONE ESTERNA | NO | LICUIDI PENETRANTI | NO |
| PRESSIONE DI PROVA IDRAULICA | 25.5 barg | ULTRASUONI | NO |
| TEMPERATURA DI ESERCIZIO | 5 + 55°C | CONTROLLO MAGNETOSCOPICO | NO |
| TEMPERATURA DI PROGETTO | 85°C | WELD TEST COUPON | NO |
| SOVRAMEZZO DI CORROSIONE | 3 mm | PROCEDIMENTO DI SALDATURA | See doc: C220006WBK013 |
| CAPACITA' | 30 l | TIPO DI FONDO | CAP |
| EFFICIENZA GIUNTI | 0.85 | FORMAZIONE FONDO | HOT |
| MAMP @ Design Temperature | 18.15 barg @ +85°C | PESO A VUOTO | 59 kg |
| MAMP(EXT) | NO | PESO IN ESERCIZIO | 59 kg |
| MDMT @ MAMP | 0 °C @ 18.15 barg | PESO PIENO D'ACQUA | 88 kg |
| TRATTAMENTO TERMICO | NO | DATI DEL VENTO | - |
| IMPACT TEST | NO | DATI SISMICI | - |

| Rev. | Descrizione / Description | Disegnato/Draw | Controllato/Checked | Approvato/Approved | Data/Date |
|------|-----------------------------------|----------------|---------------------|--------------------|------------|
| 03 | Modified as per Client comments | CM | MV | GL | 15/04/2022 |
| 02 | Modified as per Customer comments | CM | MV | GL | 02/04/2022 |
| 01 | Modified earthing lug | CM | MV | GL | 25/03/2022 |
| 00 | FIRST ISSUE | CM | MV | GL | 16/03/2022 |

Objetto/Object: PULSATION DAMPER INLET

| Scala/Scale | 1 : 5 | Formato/Size | A1 |
|------------------|------------------------|--------------|-------|
| Comm. N°/Job No. | C220006 | Foglio/Sheet | 1 - 1 |
| Cliente/Customer | Airpack Nederland B.V. | | |
| Ord. No. | 18498-VV-0901 | | |
| Dis. N°/Dwg No. | C220006DWG001 | Rev. | 03 |

